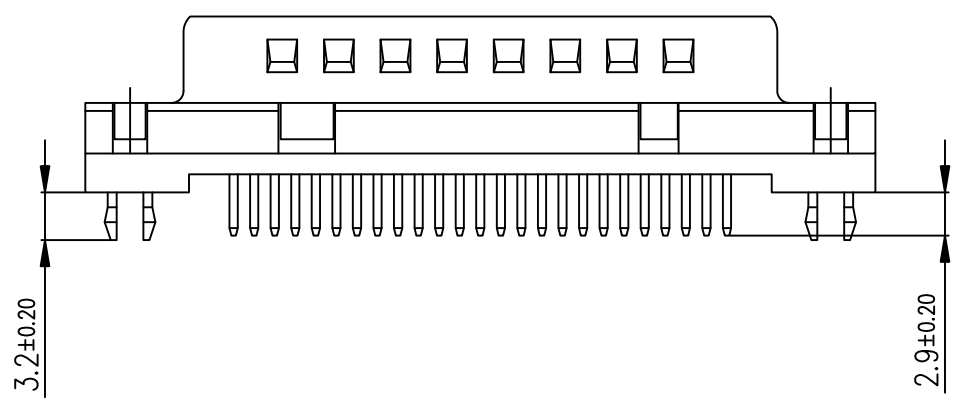
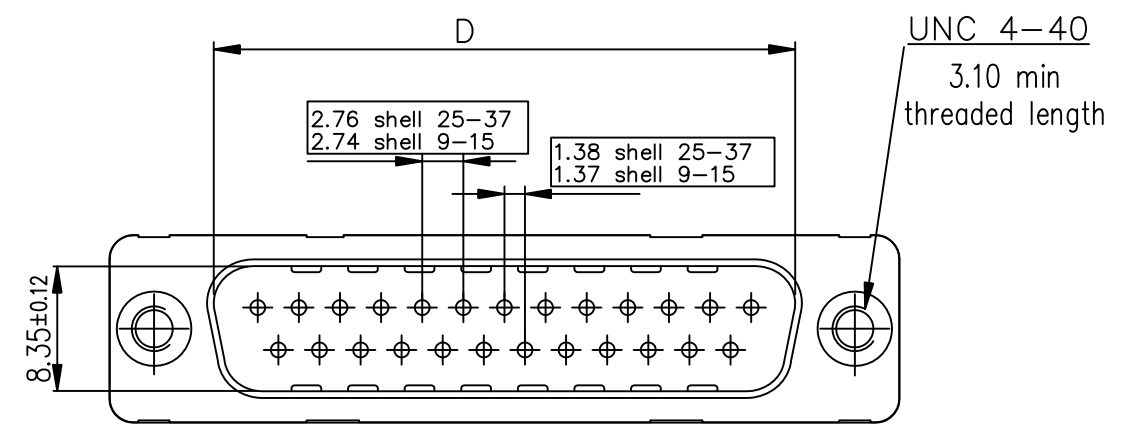
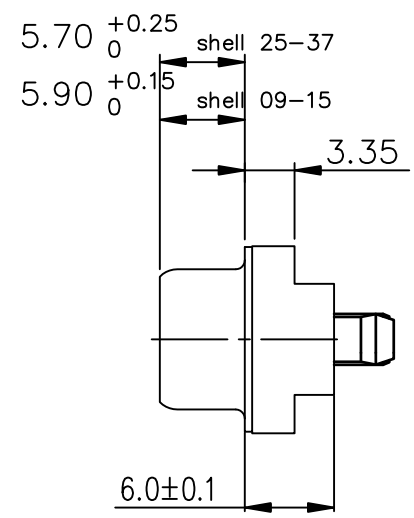
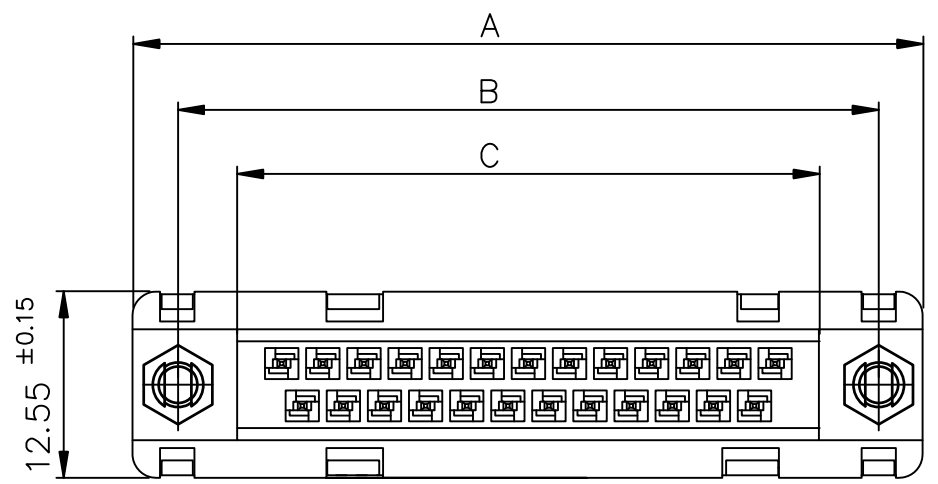




Copyright FCI

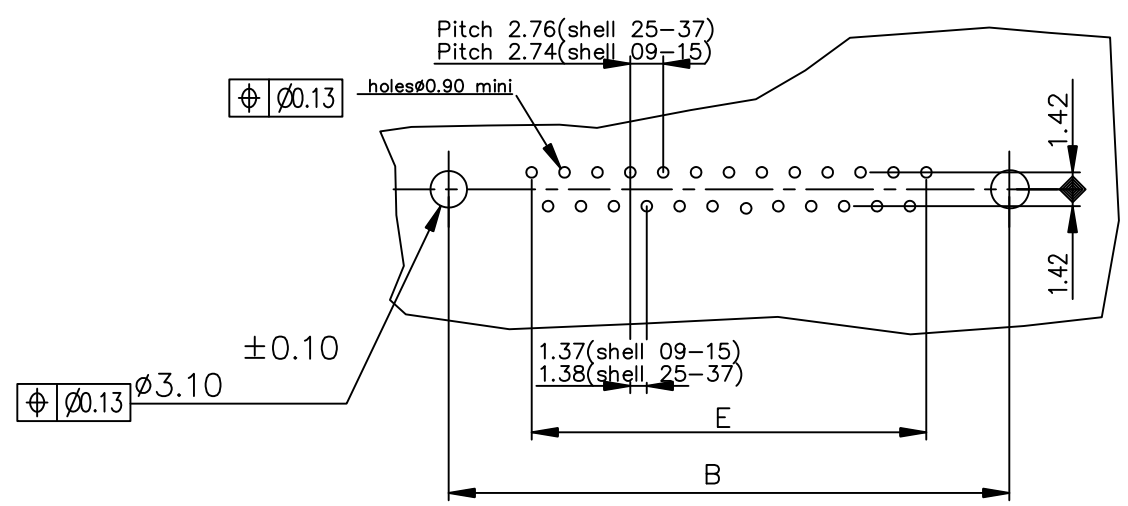


LEAD FREE PART NUMBER

SHELL	A±0.38	B±0.12	C±0.10	D±0.25	E±0.07	PART NUMBER
09	30.81	24.99	16.96	16.79	10.96	D09P24A.GX00LF
15	39.14	33.32	25.18	25.12	19.18	D15P24A.GX00LF
25	53.03	47.04	39.12	38.84	33.12	D25P24A.GX00LF
37	69.32	63.50	55.68	55.30	49.68	D37P24A.GX00LF

Protection: 4 --> Flash Au  
6 --> 0.76µ Au

PC card drilling dimensions(after plating)  
(thickness 1.60±0.20mm)



GENERAL CHARACTERISTICS AND ROHS INFORMATIONS:  
SEE DRAWING C01-8646-0000

mat'l. code		surface		tolerance		projection		product family	
-		ISO 1302 ✓		ISO 406 ISO 1101				D-SUB	
ltr		ecn no		dr		date		title	
K		ELX-I-21654		AB		2015-10-26		MALE DELTA-D STRAIGHT, SOLDER TYPE	
						angles		MM	
						linear		scale 2:1	
						0°±2'			
				dr		LELEON 1992-09-10		dwg no	
				enr		ALIAS BABU 2015-10-26		sheet 1 of 1	
				chr		MITHUN PAUL 2015-10-26		size	
				appd		BIJU K PAUL 2015-10-26		A3	
sheet index		revision		K				type	
		sheet		1				Product Customer Drawing	