

Recommended PCB Layout
(Top View)

Material and Finish

Shell: Steel, Nickel plated
 Insulator: PBT thermoplastic with glass-fiber reinforcement, UL94V-0 rated
 Color: Black

Contact Material:
 Plug - Brass

Contact Plating Options:
 Standard: gold flash on mating end, tin on termination end, nickel underplate on entire contact

15 Option: 15u" gold on mating end, tin on termination end, nickel underplate on entire contact

30 Option: 30u" gold on mating end, tin on termination end, nickel underplate on entire contact

Electrical Specifications

Rated Current: 1.5A
 Rated Voltage: 30Vac
 Insulation Resistance: more than 1000 megohms at 500V DC
 Contact Resistance: 13 milliohms max.
 Dielectric Withstanding Voltage: 1000V for 1 minute
 Operating Temperature: -55°C to +105°C

Ordering Information	
Part Number	Contact Area Plating Finish
K86X-BD-44P-K	Gold Flash (standard)
K86X-BD-44P-K15	15u" Gold (15 option)
K86X-BD-44P-K30	30u" Gold (30 option)



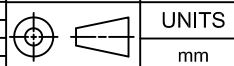
Tolerances
X.X ± 0.25
X.XX ± 0.15
Unless Stated Otherwise

REV.	DATE	DESCRIPTION	REV. BY	CHK. BY	DRAWN BY	DATE
A1	08/29/06	New Drawing	R. Aguirre	H. MA	R. Aguirre	08/29/06
A2	1/16/08	ECO# 07-052	WILL H.	H. MA		
A3	9/15/14	ECO#14-028	H. MA	P. DalCanto		
A4	12/31/17	ECO# 17-033	G. Serrato	C. Furumasu		

K86X-BD-44P-K

Vertical D-sub, High Density, RoHS Compliant

44 Pin Male w/ threaded bushings



mm