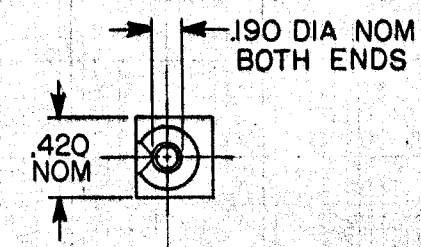
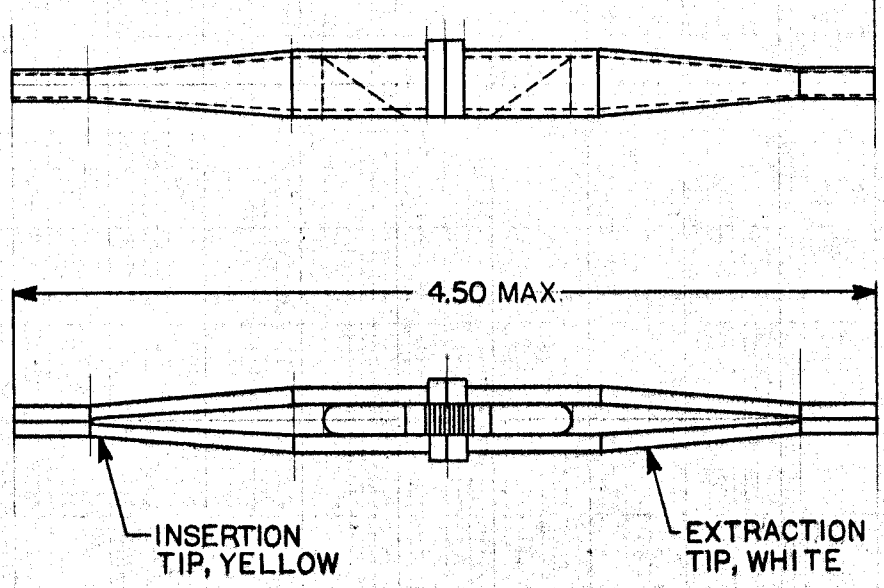


REVISIONS				
ZONE	LTR	DESCRIPTION	DATE	APPROVED
-	A	RELEASED TO MFG	4/24/77	12hr



**NOTES:**  
 1. THIS DOUBLE ENDED TOOL IS USED TO INSERT AND REMOVE ELECTRICAL CONTACTS FROM CONNECTOR BLOCKS. REFERENCE (MS3447-12)

**SPECIFICATION CONTROL DRAWING**

ITEM	QTY	PART NUMBER	DWG OR SPEC	PARTS LIST		DESCRIPTION
UNLESS OTHERWISE SPECIFIED DIMENSIONS ARE IN INCHES AND TOLERANCES ARE: .XXX : ± .005 .XX : ± .002 .X : ± .001				DRAWN	J BITTER	12-6-76
				CHECKED	R. Mottled	4/24/77
MATERIAL				APPROVED	WTZ	2-15-77
				APPROVED		
FINISH				PART NUMBER	993965	
				PROJECT	AD-1527	
DO NOT SCALE THIS DRAWING				SCALE	NONE	
				WEIGHT		
APPLICATION				SHEET		OF

RAYCHEM CORPORATION  
 305 CONSTITUTION DRIVE  
 MENLO PARK, CALIFORNIA 94025

TITLE: **AD-1527 CONTACT INSERTION & EXTRACTION TOOL (FOR #12 SOLDER TACT)**

SIZE: C  
 CODE IDENT: NO 06000  
 DWG NO: **AD-1527-5**

If this document is printed it becomes uncontrolled. Check with the web for latest revision.