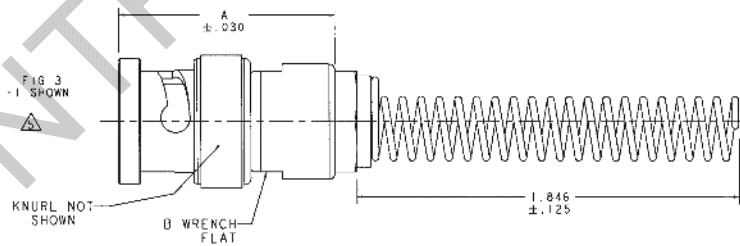
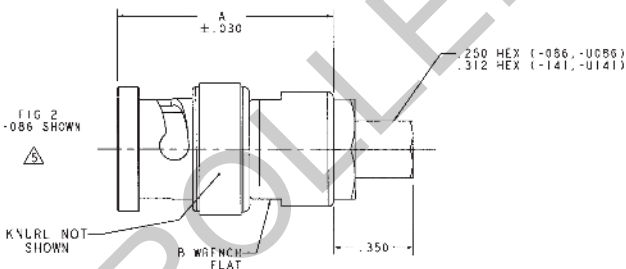
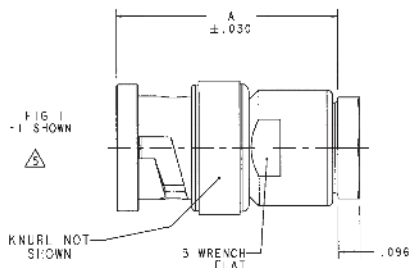
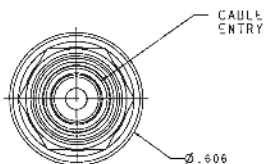
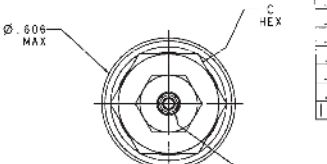
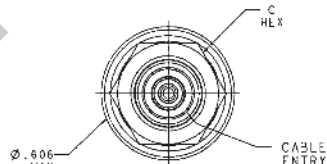


RED INDICATES ORIGINAL

DASH NO	FIG	CABLES ACCOMMODATED	A DIM	B FLATS	C HEX	ASSEMBLY PER
-1		RG-58				
-U1		ESSEX 621-715				
-2		RG-59				
-U2		BELDEN 8279				
-2A		AT&T 730A				
-U2A						
-25		RG-223				
-U25						
-3		RG-55	.931	.437	.437	TAI-01
-U3		RG-22				
-3A		BELDEN 8218				
-4		RG-74				
-U4		RG-87				
-5		RG-96				
-U5		HEWLETT-PACKARD 8120-1107				
-5A						
-U5A						
-5B						
-U5B						
-6		BELDEN 9231	.988	.500	.500	TAI-119
-U6		RG-5				
-6E		RG-6				
-U6E		RG-303				
-7						
-U7		RG-180				
-72						
-U72		GRUYMAN GC875GPI				
-31		RG-187 DBL SHLD				
-U31						
-34		BELDEN 8228	.931	.437	.437	TAI-101
-U34		275-3991 MICRODOT				
-36		616-569 AMPEX				
-U36		810 RAYCHEM				
-37		RG-304				
-U37		9248 BELDEN				
-41		BRAND-REX 6749				
-U41		GORE C06C032				
44		88281 BELDEN	.988	.500	.500	TAI-119
-U44		89120 BELDEN				
-51						
-U51		89555 BELDEN				
-52		734A AT&T	.931	.437	.437	TAI-101
-U52						
-53						
-U53						
-63						
-U63						
-086		RG-405				
-U086						
-141						
-U141		RG-402				TAI-130



REVISONS		1-0169	SH 1C
REV	LOC NO	DESCRIPTION	DATE
AE	11583	DASH NO COLUMN - 111 MAX - 112 SHEET 2, MADE CORRECTION IN 1-1 SECTION VIEW: SEE LOG	LSR: [Signature]



INCH	MM
.005	0.13
.030	0.76
.096	2.44
.125	3.18
.250	6.35
.312	7.92
.350	8.89
.437	11.0
.500	12.7
.606	15.39
.931	23.65
.988	25.10
1.846	46.89

IF BEND RELIEF SPR NG REQU RED ADD SUFFIX "SR" TO MODEL NO (SEE F & 3) (NOT AVAL LABLE W TR CABLE GRUPS -6, -U6, -6E, -LEE, -51, -U51, -52, -U52, -63, -U63 -086, -U086, -141 & -U141)

4. BNC COAXIAL CABLE PLUG BOTH 50 & 75 OHM VERSIONS
3. DASH NO DENOTES CABLE GROUP EXCEPT "U" PREFIX DENOTES 75 OHM VERSION
2. FINISH: TFS-1A(NICKEL)(TOTAL BUILD-UP .000180-.000450)
1. ALL DIM ARE IN INCHES

FOR CABLE GROUPS -1 & -U1 SUPPLY 1 EA ACA1 FOR CABLE GROUPS -2 & -U2 SUPPLY 1 EA ACA2 FOR CABLE GROUPS -5 & -U5 SUPPLY 1 EA ACA5 MAY BE ASSEMBLED TO CABLE/CONNECTOR ASSY USING 3M SCOTCHGRIP NO. 1099 PLASTIC ADHESIVE, OR EQUIV.

IF PLASTIC STRAIN RELIEF REQUIRED, ADD SUFFIX "ST" TO MODFI NO. (ONLY AVAILABLE WITH: -1, -U1, -2, -U2, -5, -U5)

110-0363		DESCRIPTION		PART NUMBER		ITEM
12-09	105-1064	1-0294	110-0022			
05-0717	105-0870	1-0204	1-0227			
305-0541	105-0668	1-0212	105-3944			
105-0158	105-0697	1-0215	105-3007			
305-0383	105-0659	1-0216	105-2449			
305-0187	105-0461	1-0218	105-2364			
105-1316	105-0295	1-0220	1-0504			
NEXT ASS*						

TROMPETER RF CONNECTIVITY	PL20/BR/ UPL20/BR
DWG LSR 6-26-98	MATERIAL CODE IDENT DRAWING NO.
CHK [Signature]	14949 I-0369
PKGR [Signature]	AE
APPR [Signature]	DATE 10-22-93 SHEET 1C