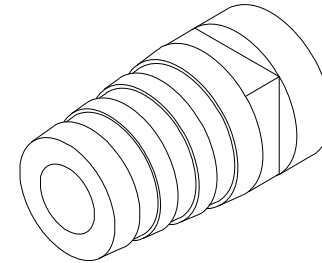
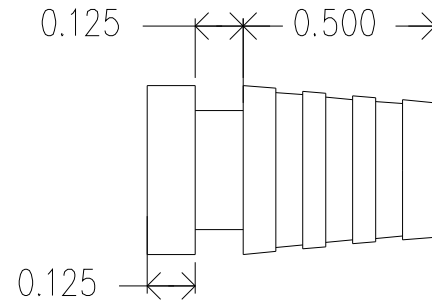
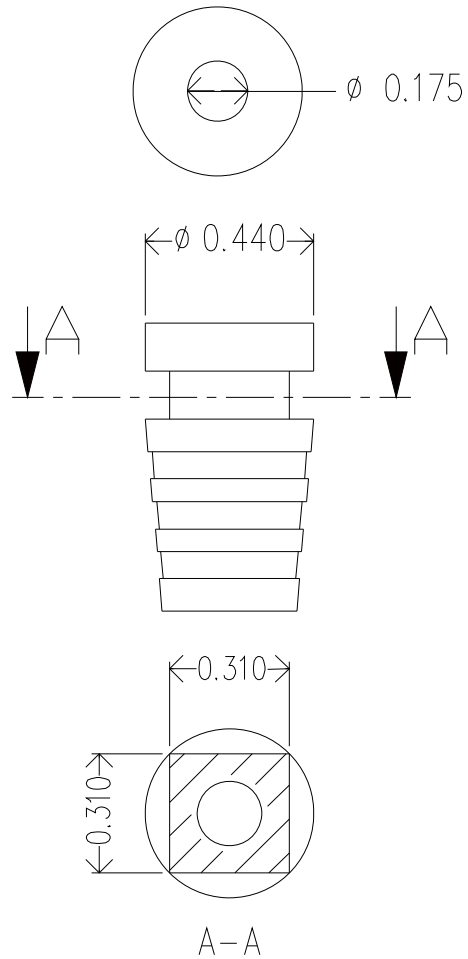


		REVISIONS	DATE	APPROVED
ZONE	REV.	DESCRIPTION		



MOLD MATERIAL: ISC P/N: 5000214, PVC, M1472, RoHS, Black

Dimensions are subject to change.
 PROPRIETARY AND CONFIDENTIAL
 THE INFORMATION CONTAINED IN THIS DRAWING IS THE SOLE PROPERTY OF ISC ENGINEERING. ANY REPRODUCTION IN PART OR AS A WHOLE WITHOUT THE WRITTEN PERMISSION OF ISC ENGINEERING IS PROHIBITED.

		DIMENSIONS ARE IN INCHES		NAME	DATE	ISC Engineering 4351 Schaefer Ave, Chino, CA 91710 Ph: 909-596-3315 Fax: 909-596-3335 www.iscengineering.com www.OvermoldTooling.com	
		TOLERANCES:		DRAWN	R FIERRO		05/05/05
		FRACTIONAL ±		CHECKED			
		ANGULAR: MACH ± BEND ±		ENG APPR.			
		TWO PLACE DECIMAL ±		MFG APPR.			
		THREE PLACE DECIMAL ±		Q.A.			
		MATERIAL --		COMMENTS:		ROUND, SOLID RIB SR	
NEXT ASSY	USED ON	FINISH --				1461040-175-E-310X310-440-0	
APPLICATION		DO NOT SCALE DRAWING				SIZE A DWG. NO. 1467078 REV.	
				SCALE: 2:1 WEIGHT:		SHEET 1 OF 1	

