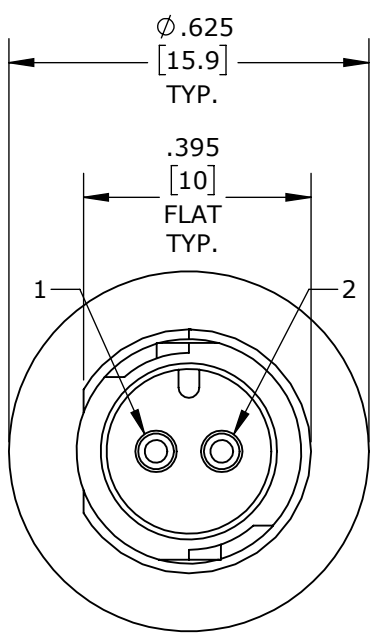


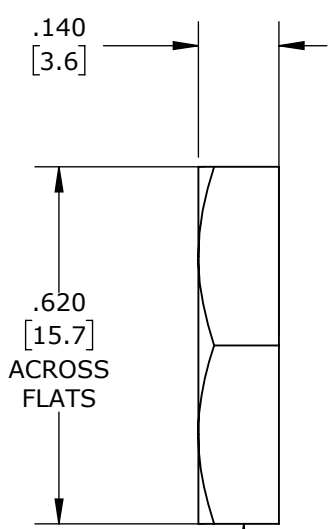
MFG. ENG.	APPROVED BY:	DATE:	QA	APPROVED BY:	DATE:
-----------	--------------	-------	----	--------------	-------

PART NO.	NO. OF PINS
W17280-2PG-P-300	2
W17280-3PG-P-300	3

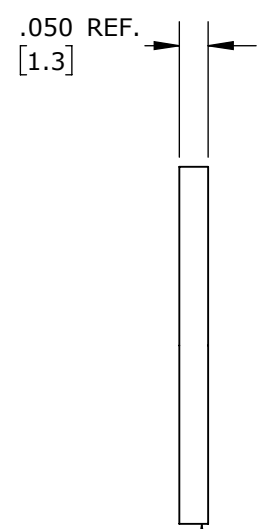
- NOTES:
1. ALL PARTS ARE BULK PACKED.
 2. REFER TO DRAWING HPMCSTD FOR CONTACT PATTERNS.
 3. ALL DIMENSIONS ARE REFERENCE ONLY IN INCHES [mm], WITHIN ±0.015 UNLESS OTHERWISE NOTED.



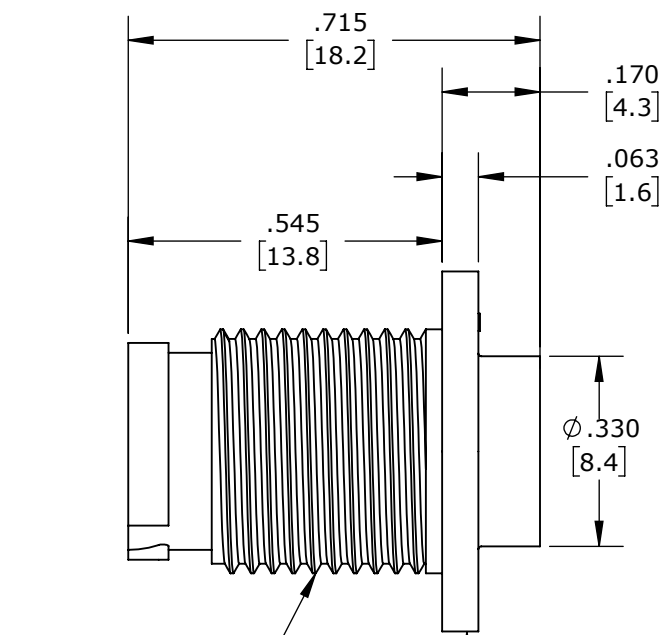
FACE VIEW
W17280-2PG-P-300



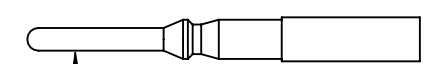
5/8 IN. HEX NUT
MAT'L: THERMOPLASTIC, BLACK



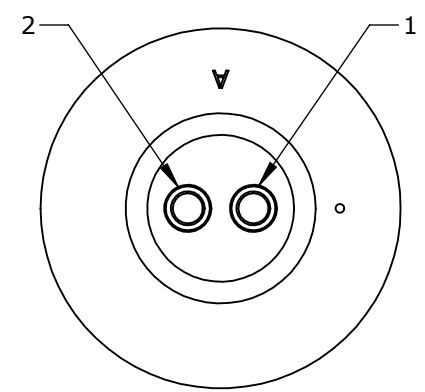
GASKET
MAT'L: ELASTOMER, BLACK



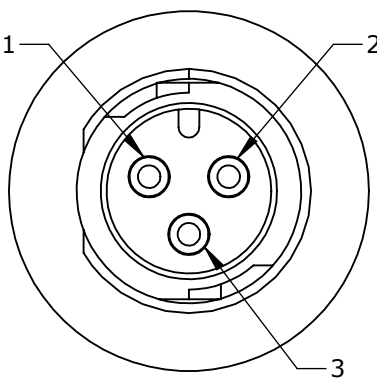
PANEL CONNECTOR, MALE
MAT'L: THERMOPLASTIC, BLACK



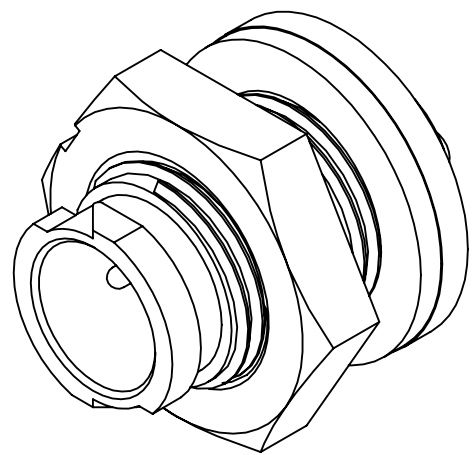
(2-3) #20 PIN CONTACTS WITH CRIMP TAIL
MAT'L: GOLD PLATED, COPPER ALLOY



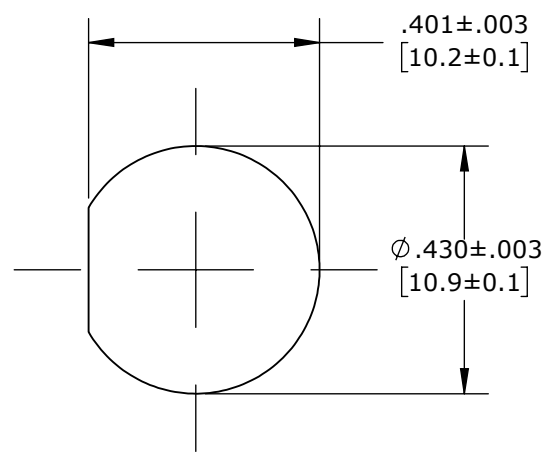
WIRE VIEW
W17280-2PG-P-300



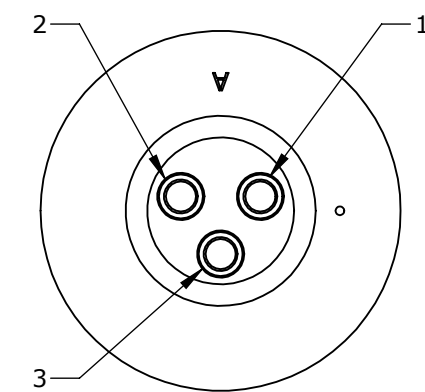
FACE VIEW
W17280-3PG-P-300



ASSEMBLED VIEW
FOR CUSTOMER REF. ONLY



RECOMMENDED PANEL CUTOUT



WIRE VIEW
W17280-3PG-P-300

PRELIMINARY

DIMENSIONS IS BRACKETS [] ARE METRIC

CUSTOMER APPROVAL

THIS DOCUMENT CONTAINS CONFIDENTIAL INFORMATION PROPRIETARY TO CONXALL CORPORATION. ANY REPRODUCTION, DISCLOSURE, OR USE OF THIS DOCUMENT / INFORMATION IS EXPRESSLY PROHIBITED UNLESS AUTHORIZED IN WRITING BY CONXALL CORPORATION.

APPROVED BY: _____

DATE: _____

RoHS COMPLIANT

0A	JGK	8/12/19	DRAWING CREATED FOR PDR #18004.		
REV.	INIT.	DATE	DESCRIPTION		
	JGK	8/12/19	ALL INFORMATION ILLUSTRATED IS THE PROPERTY OF "CONXALL CORPORATION". UNAUTHORIZED DUPLICATION OR DISTRIBUTION OF THIS DOCUMENT IS PROHIBITED. ALL UNITS ARE IN FEET, INCHES, FRACTION OF INCHES AND DECIMALS. UNLESS OTHERWISE SPECIFIED TOLERANCES: 3 PLACE DECIMALS ±.005 ANGLES ±1° FRACTIONS ±1/16 ▽ - CRITICAL CHARACTERISTIC FLAG PER SPEC. XXXX		
APPROVED BY:			 601 E. WILDWOOD VILLA PARK, IL 60181		
CHECKED BY:			TITLE: PANEL MOUNT ASSEMBLY (2-3) #20 PIN CONTACTS, CRIMP TAIL INSTA-CLICK, MICRO-CON-X STANDARD PRODUCT		
SCALE	SIZE	SHEET	CUSTOMER:		
NTS	B	1 OF 1	PART NUMBER: W17280-XPG-P-300		
FILE:	DIRECTORY:	PART NUMBER:	REV		
W17280-XPG-P-300	SLW	W17280-XPG-P-300	0A		

CUSTOMER PRINT

PART NUMBER: W17280-XPG-P-300