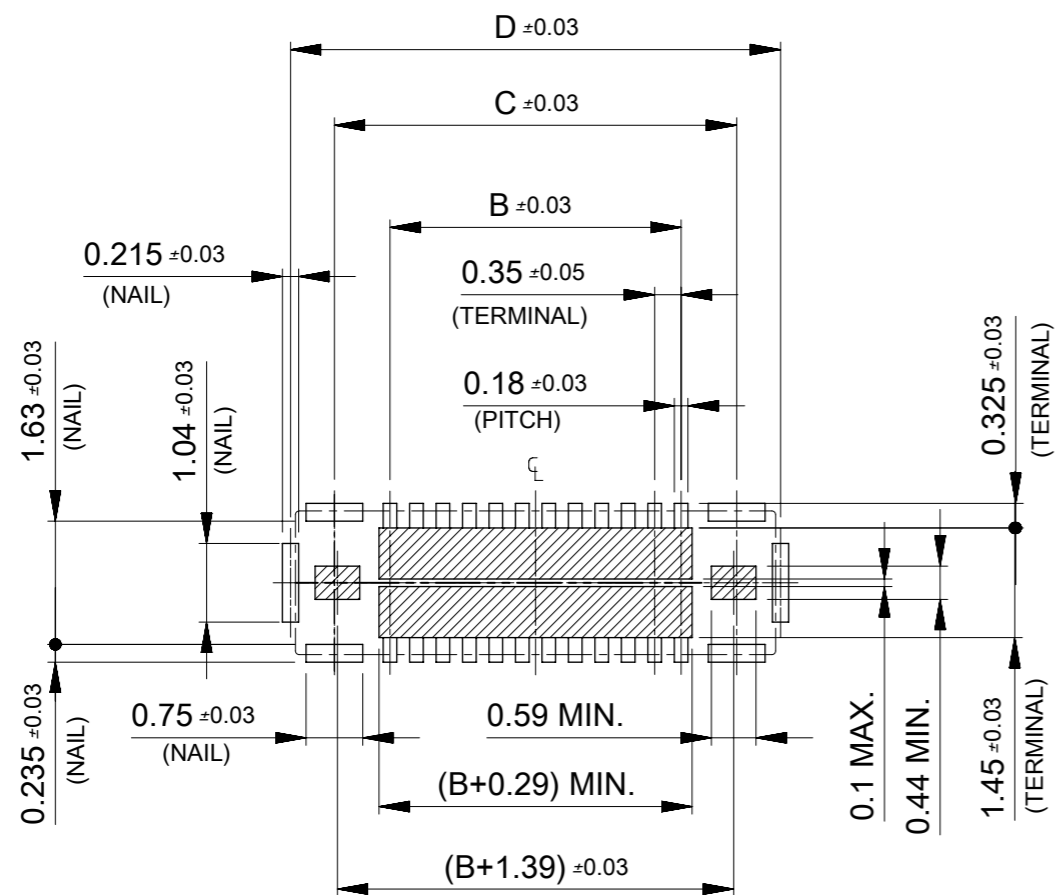


NOTES

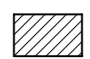
- 1 MATERIAL
HOUSING : LIQUID CRYSTAL POLYMER UL94V-0 (COLOR : BLACK)
TERMINAL : COPPER ALLOY
FITTING NAIL : COPPER ALLOY
- 2 PLATING
TERMINAL: CONTACT AREA: SEPARATED GOLD PLATING (0.1 MICROMETER MINIMUM).
SOLDER TAIL AREA: SEPARATED GOLD PLATING.
UNDER PLATING : NICKEL OVERALL.
*DIVIDE INTO PARTS THE GOLD PLATING OF THE CONTACT AND THE TAIL PART BY THE NICKEL PLATING.
FITTING NAIL: CONTACT AREA: SEPARATED GOLD PLATING (0.1 MICROMETER MINIMUM).
SOLDER TAIL AREA: SEPARATED GOLD PLATING.
UNDER PLATING : NICKEL OVERALL.
*DIVIDE INTO PARTS THE GOLD PLATING OF THE CONTACT AND THE TAIL PART BY THE NICKEL PLATING.
*EVEN THOUGH GOLD PLATING ON THE TOP SURFACE OF NAIL MIGHT BE THIN, NO FUNCTIONAL PROBLEM.
- △ APPLY FOR (CIRCUIT/2)=EVEN
- 4 MATE WITH : 2068070**2
- 5 TAIL AND FITTING NAIL COPLANARITY TOBE 0.08MAXIMUM.

3.23	2.17	0.70	3.30	2068060062	○	---	6
D	C	B	A	EMBOSSSED TAPE PACKAGE	HIGH VOL. TOOL	LOW VOL. TOOL	CIRCUIT
				ORDER No.	SAMPLE PREPARATION ○:TOOLED △:WORK IN PROCESS ---:TOOLING TO BE CONFIRMED		
				CONNECTOR SERIES No. : 2068061**1			

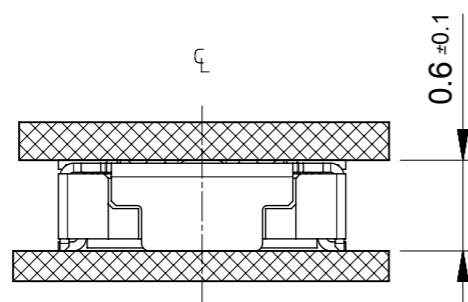
THIS DRAWING CONTAINS INFORMATION THAT IS PROPRIETARY TO MOLEX ELECTRONIC TECHNOLOGIES, LLC AND SHOULD NOT BE USED WITHOUT WRITTEN PERMISSION										
SYMBOLS		DIMENSION UNITS		SCALE		CURRENT REV DESC: PROPOSED				
▽ = 0	mm	10:1		molex 0.35 BB CONN. H=0.6 ICB6 REC ASSY PRODUCT CUSTOMER DRAWING DOCUMENT NUMBER: 2068061000-SD DOC TYPE: PSD DOC PART: 000 REVISION: B SHEET NUMBER: 1 OF 2						
▽ = 0	GENERAL TOLERANCES (UNLESS SPECIFIED)									
▽ = 0	ANGULAR TOL ± 3.0°									
▽ = 0	4 PLACES ± 0.03									
▽ = 0	3 PLACES ± 0.03									
▽ = 0	2 PLACES ± 0.05		EC NO: 622978		2019/08/26		DRWN: TNISHIDA02		2019/08/26	
▽ = 0	1 PLACE ± 0.1		DRWN: NOKIMOTO		2018/11/01		CHK'D: YNAITO		2019/08/26	
▽ = 0	0 PLACES ± 0.2		APPR: RTAKEUCHI		2019/06/03		APPR: RTAKEUCHI		2019/08/26	
⊠ = 0	DRAFT WHERE APPLICABLE MUST REMAIN WITHIN DIMENSIONS		THIRD ANGLE PROJECTION		DRAWING		SERIES		MATERIAL NUMBER	
▽ = 0			A3-SIZE		206806		SEE CHART		GENERAL	




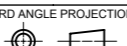
RECOMMENDED P.W. BOARD PATTERN LAYOUT (REFERENCE)

 SOLDERING PROHIBITED AREA.
WHEN WIRING IS LOCATED,
THE WIRING MUST BE MASKED BY COVER LAY OR RESIST FILM.

RECOMMENDED THICKNESS OF METAL MASK : $t=0.08\text{mm}$
RECOMMENDED OPEN APERTURE RATIO OF METAL MASK : 100%



MATED CONDITION

THIS DRAWING CONTAINS INFORMATION THAT IS PROPRIETARY TO MOLEX ELECTRONIC TECHNOLOGIES, LLC AND SHOULD NOT BE USED WITHOUT WRITTEN PERMISSION									
SYMBOLS	DIMENSION UNITS	SCALE	CURRENT REV DESC: PROPOSED				 0.35 BB CONN. H=0.6 ICB6 REC ASSY		
	mm	10:1							
▽ = 0	GENERAL TOLERANCES (UNLESS SPECIFIED)		EC NO: 622978				DOCUMENT NUMBER		
▽ = 0	ANGULAR TOL ± 3.0°		DRWN: TNISHIDA02 2019/08/26				2068061000-SD		
▽ = 0	4 PLACES ± 0.03		CHK'D: YNAITO 2019/08/26				DOC TYPE DOC PART REVISION		
▽ = 0	3 PLACES ± 0.03		APPR: RTAKEUCHI 2019/08/26				PSD 000 B		
▽ = 0	2 PLACES ± 0.05		INITIAL REVISION:				SHEET NUMBER		
▽ = 0	1 PLACE ± 0.1		DRWN: NOKIMOTO 2018/11/01				2 OF 2		
▽ = 0	0 PLACES ± 0.2		APPR: RTAKEUCHI 2019/06/03						
□ = 0	DRAFT WHERE APPLICABLE MUST REMAIN WITHIN DIMENSIONS		THIRD ANGLE PROJECTION	DRAWING	SERIES	MATERIAL NUMBER	CUSTOMER		
▽ = 0				A3-SIZE	206806	SEE CHART	GENERAL		