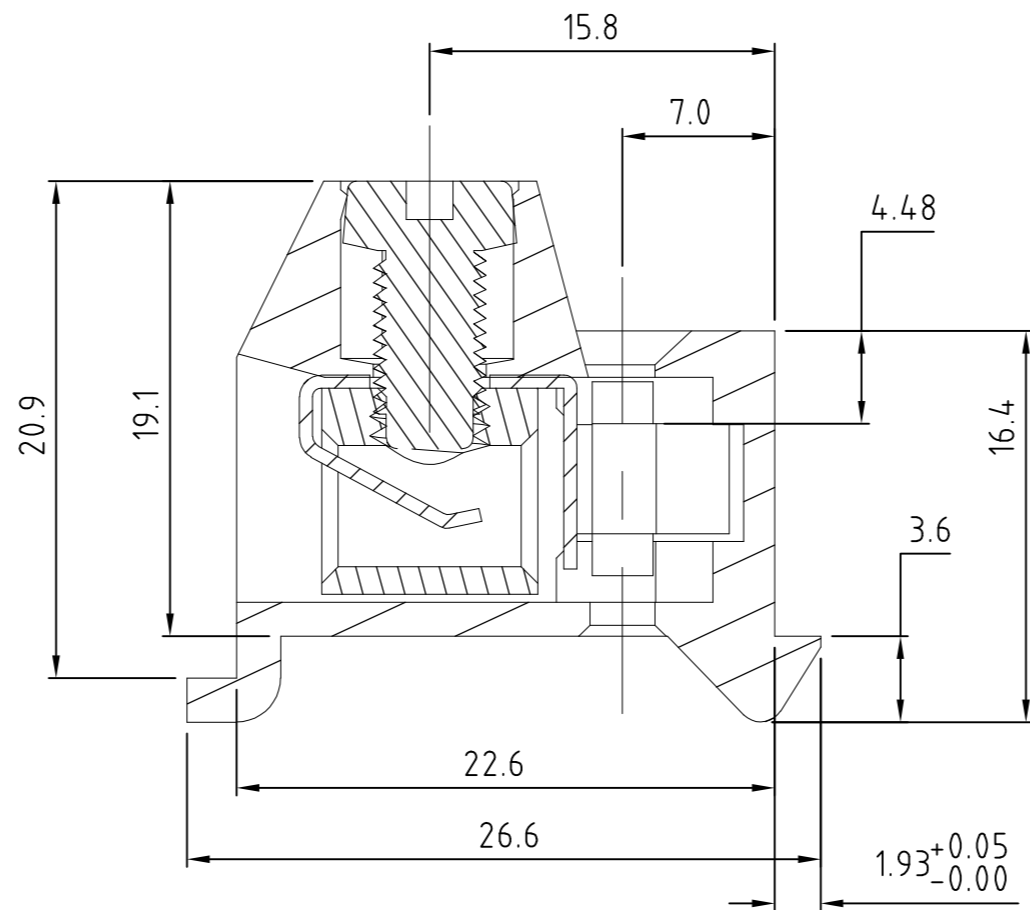
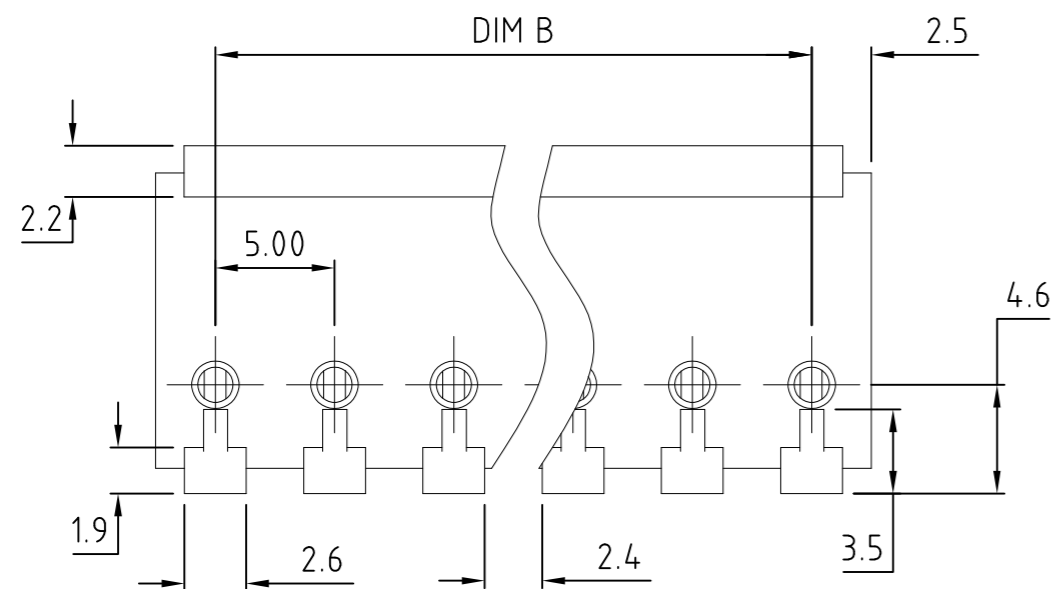
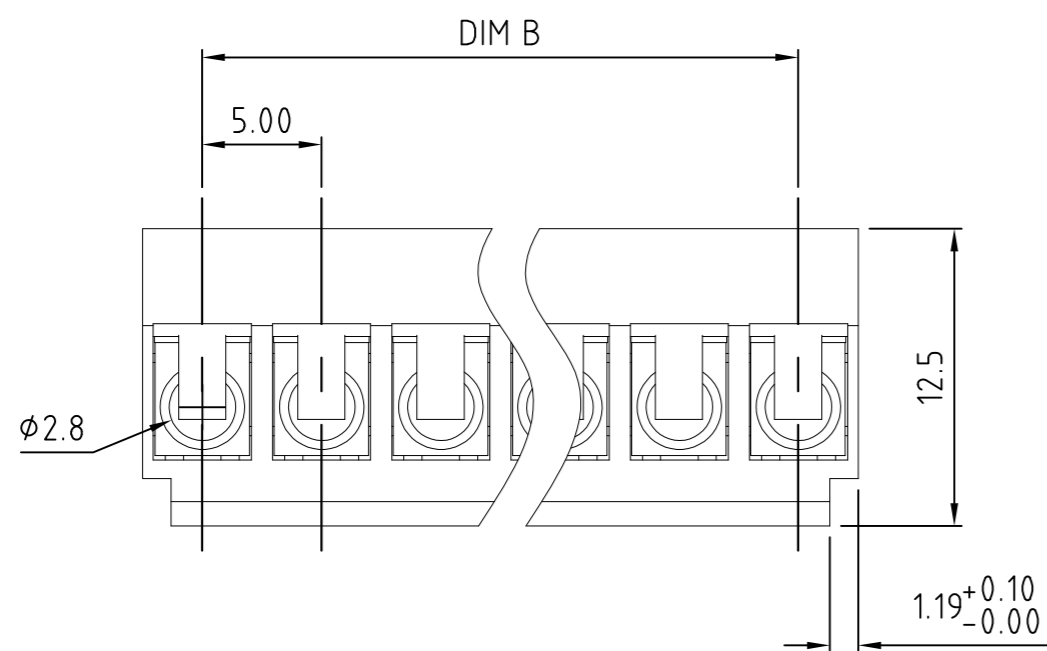
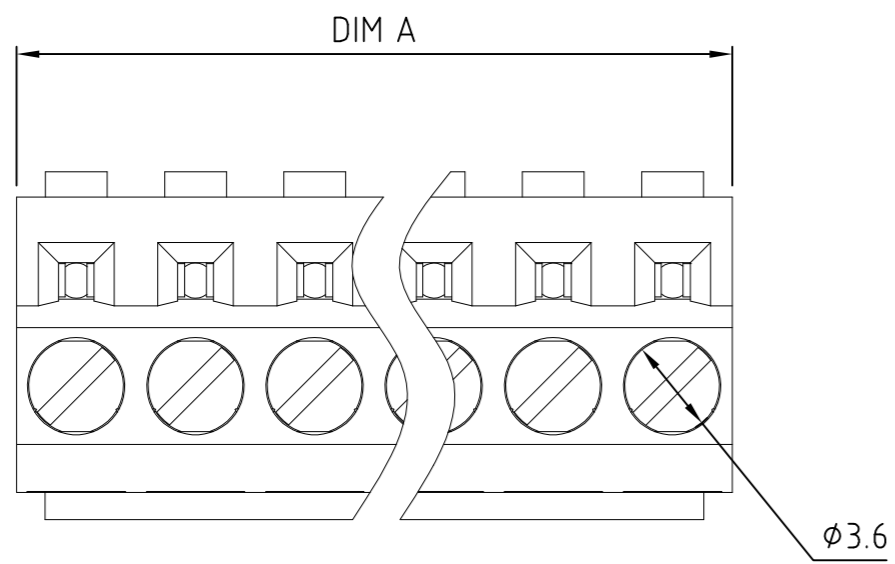


THIS DRAWING IS UNPUBLISHED. RELEASED FOR PUBLICATION
 © COPYRIGHT - By - ALL RIGHTS RESERVED.

REVISIONS				
P	LTR	DESCRIPTION	DATE	APVD
A		NEW DRAWING	03MAY2016	RS RH



SPECIFICATIONS:

MATERIALS

CONTACT BLOCK: BRASS, NICKEL PLATED
 WIRE GUARD: PHOSPHORUS BRONZE, TIN PLATED
 SCREW: STEEL, ZINC PLATED, M2.6
 BODY: POLYAMIDE (UL94-V0)

ELECTRICAL

VOLTAGE RATING: 300 VAC
 CURRENT RATING: 10 A
 WITHSTANDING VOLTAGE: 1500 VAC FOR 1 MINUTE
 WIRE RANGE: 14 - 26 AWG

MECHANICAL

TORQUE: 3.5 IN-LBS MAX
 OPERATING TEMPERATURE: -40°C TO +115°C

1 ALL MATERIALS AND FINISHES SHALL COMPLY WITH EU DIRECTIVE 2002/95/EC OF 27JAN2003 (ROHS).

2 MATES WITH PIN STRIPS, 2213865.

55.0	60.0	12	1-2213864-2
45.0	50.0	10	1-2213864-0
40.0	45.0	9	2213864-9
35.0	40.0	8	2213864-8
30.0	35.0	7	2213864-7
25.0	30.0	6	2213864-6
20.0	25.0	5	2213864-5
15.0	20.0	4	2213864-4
10.0	15.0	3	2213864-3
5.0	10.0	2	2213864-2
DIM B	DIM A	POSITIONS	TE PART NUMBER

THIS DRAWING IS A CONTROLLED DOCUMENT.		DWN	03MAY2016		
		CHK	03MAY2016		
		APVD	03MAY2016		
		PRODUCT SPEC			
DIMENSIONS: mm		TOLERANCES UNLESS OTHERWISE SPECIFIED:		NAME	
		0 PLC ± - 1 PLC ± 0.3 2 PLC ± 0.01 3 PLC ± - 4 PLC ± - ANGLES ± - FINISH		5.00MM SCREW TERMINAL BLOCK	
MATERIAL		WEIGHT		SIZE	RESTRICTED TO
		CUSTOMER DRAWING		A2 00779	-
		SCALE		DRAWING NO	
		1:1		C=2213864	
		SHEET		1 OF 1	
		REV		A	