

4

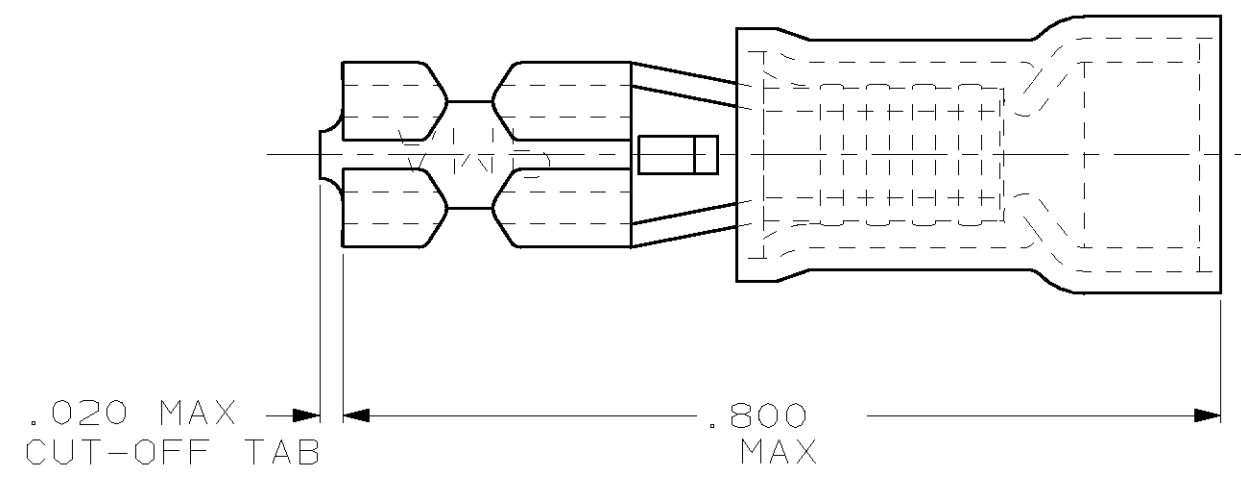
3

2

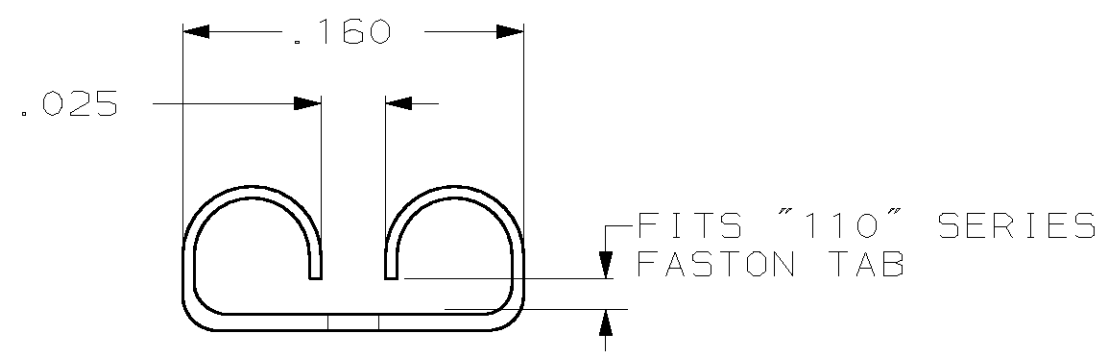
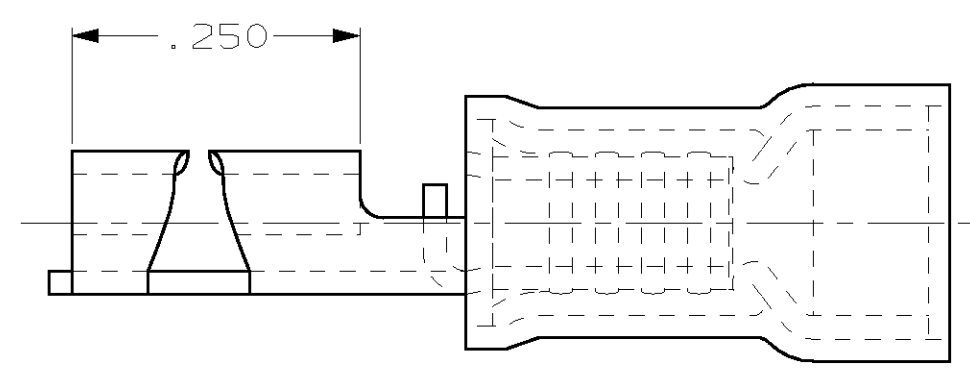
1

THIS DRAWING IS UNPUBLISHED. RELEASED FOR PUBLICATION ,19 .  
 © COPYRIGHT 19 BY AMP INCORPORATED. ALL RIGHTS RESERVED.

| LOC |     | DIST        |                      | REVISIONS |     |      |  |
|-----|-----|-------------|----------------------|-----------|-----|------|--|
| P   | LTR | DESCRIPTION |                      | DATE      | DWN | APVD |  |
| G   | 14  | G           | REV PER 0G3A-0176-02 | 08APR02   | JR  | TM   |  |



- 1. INSULATION DIA .170 MAX
- 2. FITS TAB .032 THK



| QTY | PACKAGE TYPE  | PART NO    |
|-----|---------------|------------|
| 100 | LOOSE PC, BOX | 8-640931-1 |
| -   | TAPE MOUNTED  | 640931-2   |
| -   | LOOSE PIECE   | 640931-1   |

**AMP INCORPORATED  
CUSTOMER SERVICE SYSTEM**

|  |  |
|--|--|
| FOR ADDITIONAL PRODUCT INFORMATION OR COPIES OF DRAWINGS AND TECHNICAL DOCUMENTS | PRODUCT INFORMATION CENTER<br>1-800-522-6752 |
| FOR APPLICATION TOOLING INFORMATION  | TOOLING ASSISTANCE CENTER<br>1-800-722-1111  |
| FOR ORDER ENTRY  | 1-800-526-5142                               |

MAX RECOMMENDED OPERATING TEMPERATURE:  
-

VOLTAGE RATING:  
-

CIRCULAR MIL AREA:  
-

THIS DRAWING IS A CONTROLLED DOCUMENT FOR AMP INCORPORATED. IT IS SUBJECT TO CHANGE AND THE CONTROLLING ENGINEERING ORGANIZATION SHOULD BE CONTACTED FOR THE LATEST REVISION.

| DIMENSIONS, INCHES | TOLERANCES UNLESS OTHERWISE SPECIFIED: |
|--------------------|--|
|                    | 0 PLC ±-                               |
|                    | 1 PLC ±-                               |
|                    | 2 PLC ±.015                            |
|                    | 3 PLC ±-                               |
|                    | 4 PLC ANGLES ±-                        |

MATERIAL: BODY, BRASS .016  
SLV, NYLON, COLOR, BLUE

FINISH: BODY, PRE-TIN

|                  |          |         |
|------------------|----------|---------|
| DWN              | L OLMEDA | 13NOV95 |
| CHK              | M ELLIS  | 15NOV95 |
| APVD             | B BARE   | 15NOV95 |
| PRODUCT SPEC     | -        | -       |
| APPLICATION SPEC | -        | -       |
| WEIGHT           | -        | -       |

CUSTOMER DRAWING

**AMP** AMP Incorporated  
Harrisburg, PA 17105-3608

NAME: RECEPTACLE, 110 SERIES, FASTON™, PIDG™, WIRE SIZE, 16-14 AWG

|      |           |            |
|------|-----------|------------|
| SIZE | CAGE CODE | DRAWING NO |
| A3   | 00779     | C-640931   |

SCALE: NT5 SHEET: 1 OF 1 REV: G