

THIS DRAWING IS UNPUBLISHED.

RELEASED FOR PUBLICATION

AUG ,2006.

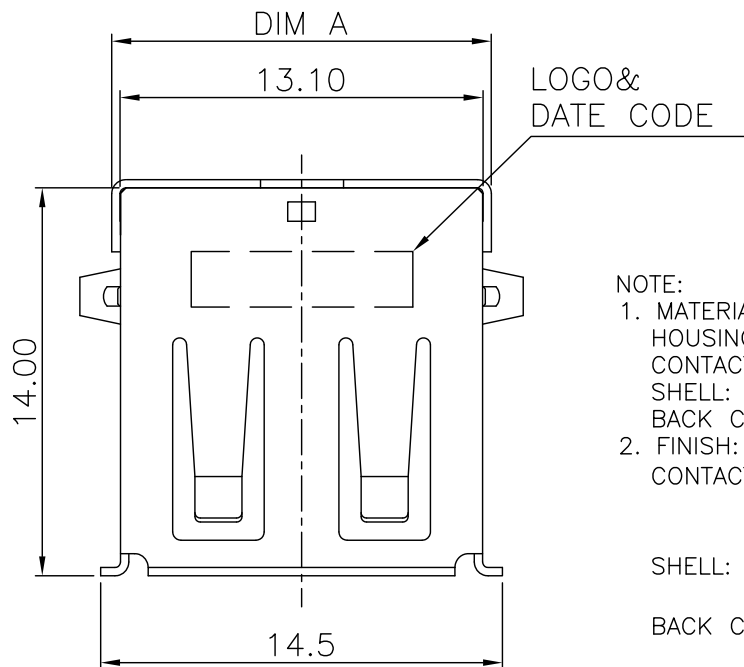
© COPYRIGHT 2009 BY TYCO ELECTRONICS CORPORATION. ALL RIGHTS RESERVED.

LOC DW

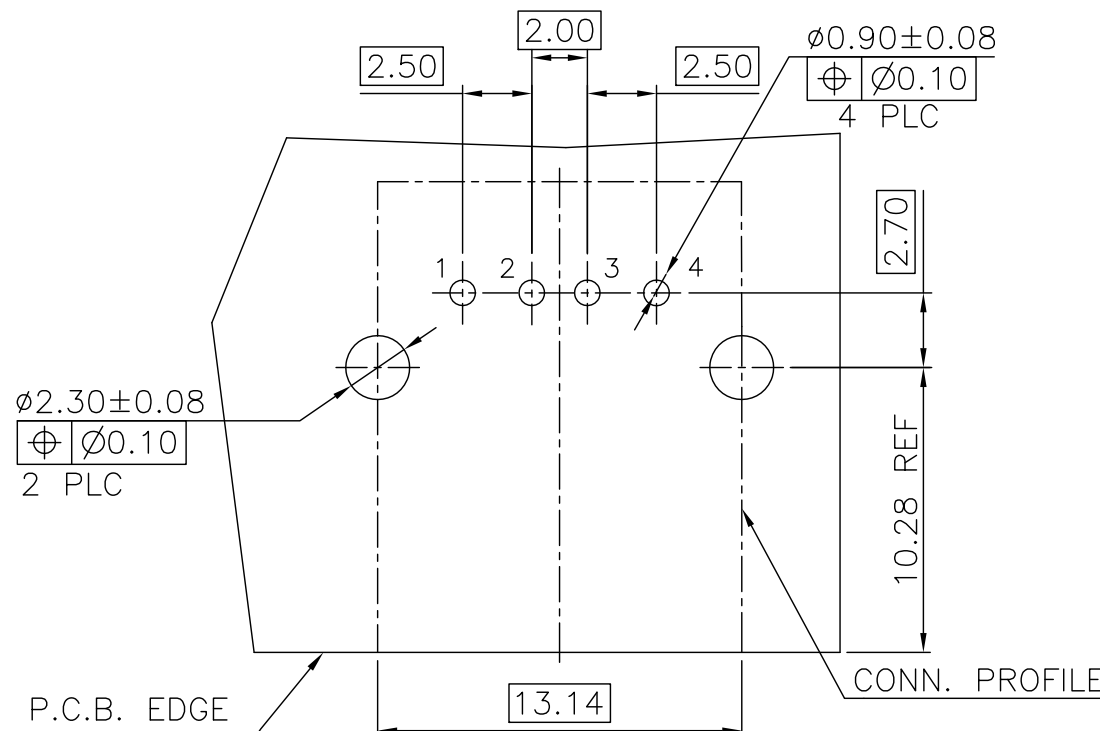
DIST

REVISIONS

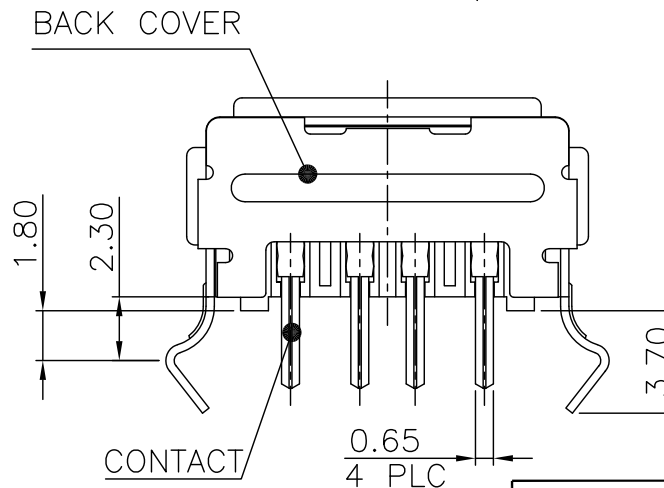
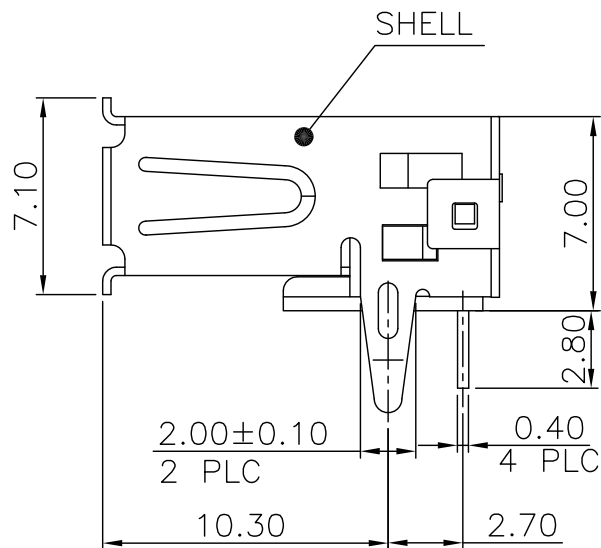
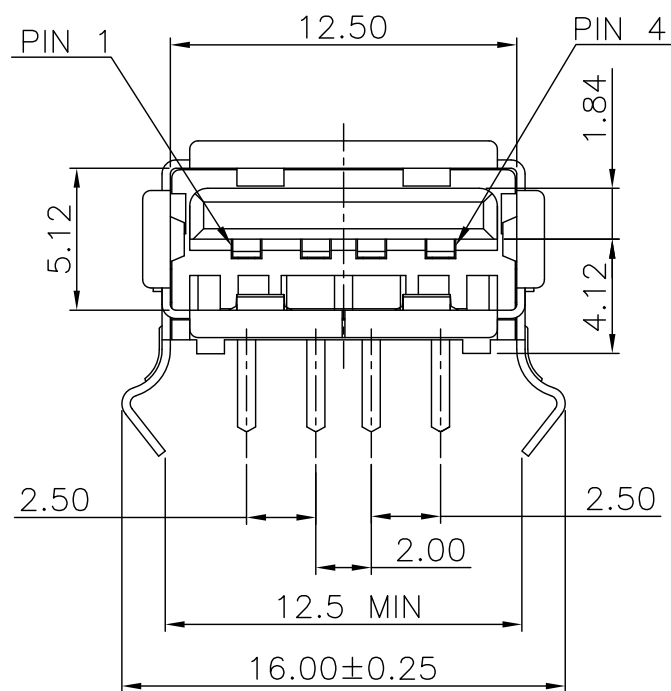
P	LTR	DESCRIPTION	DATE	DWN	APVD
E5		REVISED (ECR-13-016508)	23JAN14	BW	SC




- NOTE:
- MATERIAL:  
HOUSING: PA9T WITH 30%GF, UL94V-0, BLACK COLOR.  
CONTACT: PHOSPHOR BRONZE.  
SHELL: BRASS.  
BACK COVER: BRASS.
  - FINISH:  
CONTACT: 0.762μm [30μ"] MIN. GOLD PLATING ON CONTACT AREA.  
3.048μm [120μ"] MIN. BRIGHT TIN PLATING ON SOLDER TAILS.  
1.27μm [50μ"] MIN. NICKEL UNDERPLATING OVERALL.  
SHELL: 0.762μm [30μ"] MIN. NICKEL PLATED OVER  
0.762μm [30μ"] MIN. Cu UNDERPLATING OVERALL.  
BACK COVER: 0.762μm [30μ"] MIN. NICKEL PLATED OVER  
0.762μm [30μ"] MIN. Cu UNDERPLATING OVERALL.
  - REFLOW SOLDER CAPABLE TO 260°C PER TE SPEC 109-201, CONDITION B.



RECOMMEND P.C.B LAYOUT (THICKNESS=1.6mm)  
(COMPONENT SIDE) TOLERANCE±0.05



OBSELETE	NA	W/O	TRAY	1734081-2
	13.7	W/	TRAY	1734081-1
DIM.A	BACK COVER	PACKAGE	PART NUMBER	

THIS DRAWING IS A CONTROLLED DOCUMENT.		DWN O. HU 21SEP2004	 TE Connectivity	
DIMENSIONS: MM		CHK S. HSU 21SEP2004		
TOLERANCES UNLESS OTHERWISE SPECIFIED:		APVD W.J. KE 21SEP2004	NAME	
0 PLC ± - 1 PLC ± 0.35 2 PLC ± 0.25 3 PLC ± 0.15 4 PLC ± - ANGLES ± 3°		PRODUCT SPEC 108-57505	USB CONNECTOR, RECEPTACLE 4 POSITION, SERIES A	
MATERIAL SEE NOTE		FINISH SEE NOTE	APPLICATION SPEC 501-57579	RESTRICTED TO
		WEIGHT 2.01 GRAMS	SIZE A3	CAGE CODE 00779
		CUSTOMER DRAWING	DRAWING NO C=1734081	SCALE
			SHEET 1 OF 19	REV E5

THIS DRAWING IS UNPUBLISHED.

RELEASED FOR PUBLICATION

AUG ,2006.

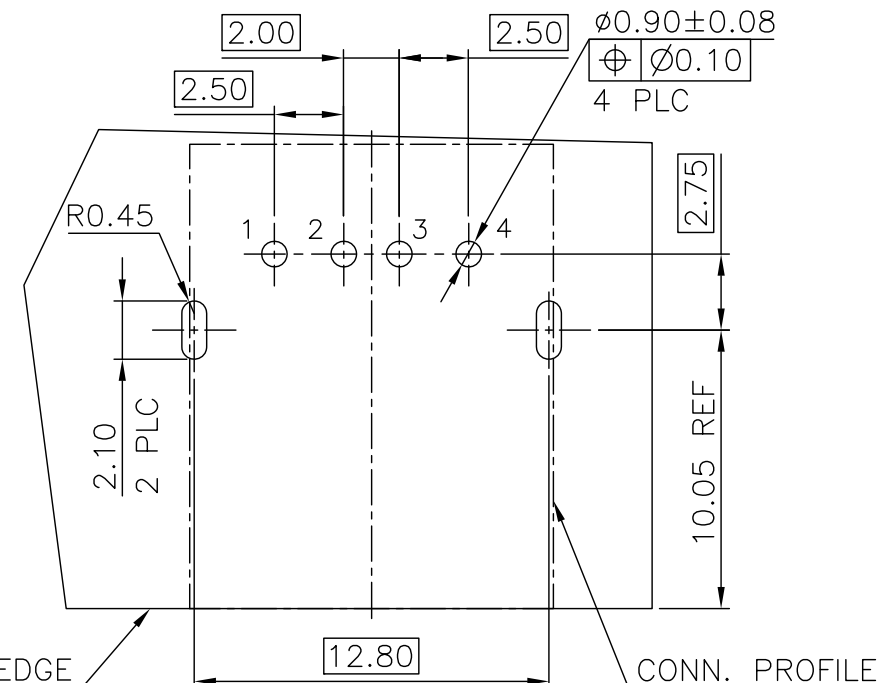
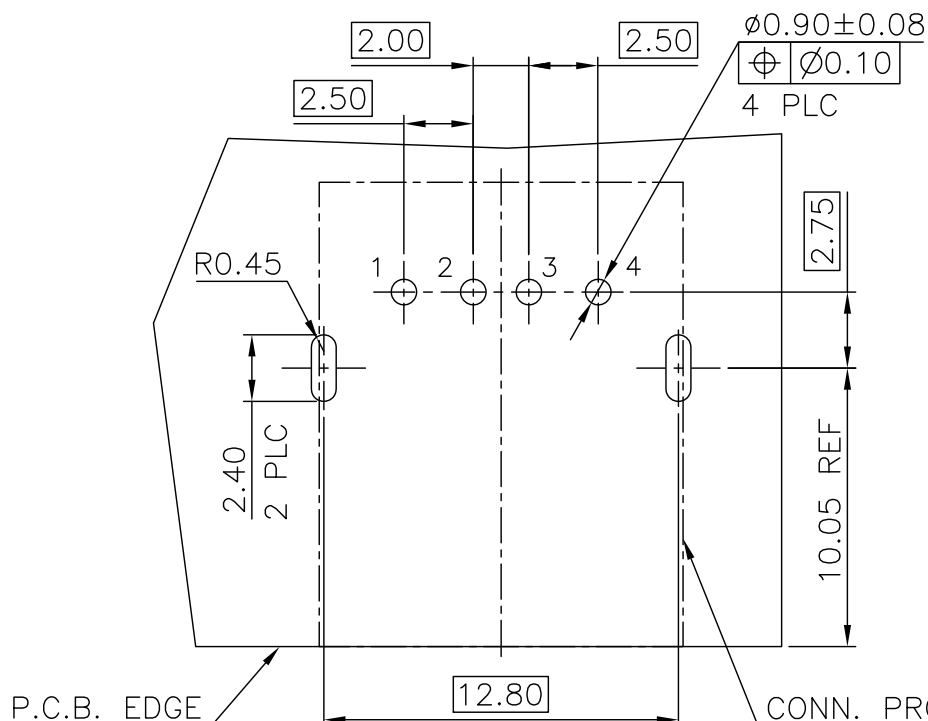
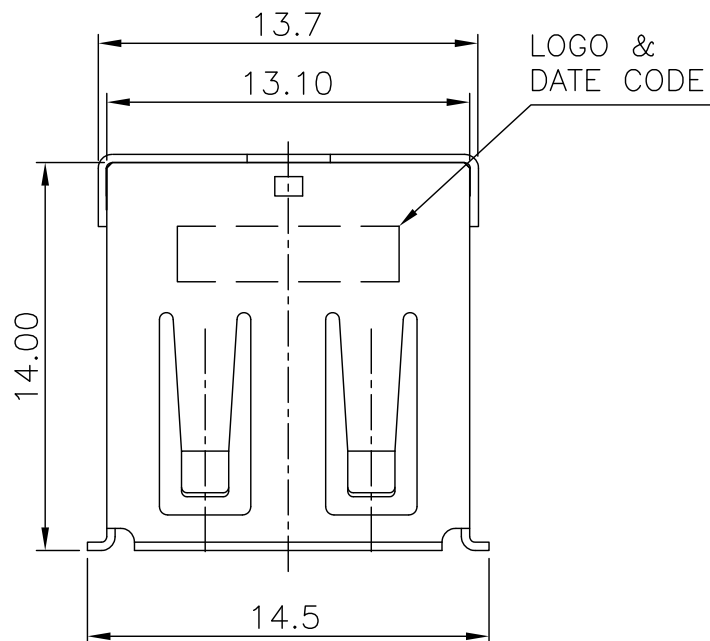
© COPYRIGHT 2009 BY TYCO ELECTRONICS CORPORATION. ALL RIGHTS RESERVED.

LOC DW

DIST

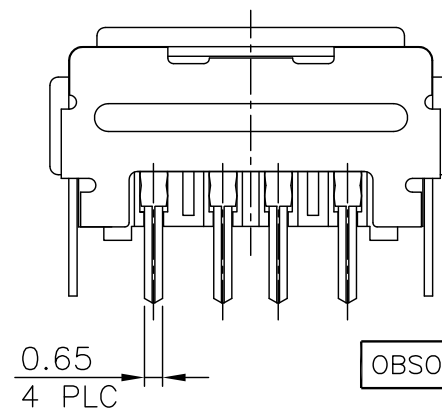
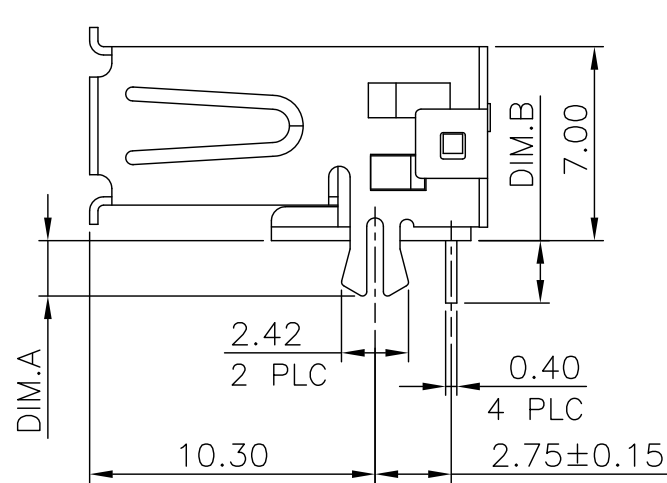
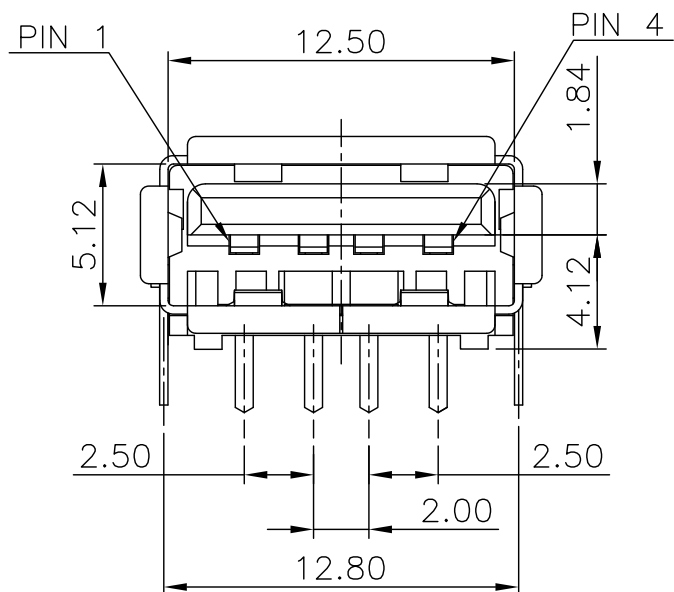
REVISIONS

P	LTR	DESCRIPTION	DATE	DWN	APVD
		SEE SHEET 1.			



RECOMMEND P.C.B LAYOUT (THICKNESS=1.6mm)  
(COMPONENT SIDE) TOLERANCE±0.05 FOR DIM.A=2.4

RECOMMEND P.C.B LAYOUT (THICKNESS=1.4~1.6mm)  
(COMPONENT SIDE) TOLERANCE±0.05 FOR DIM.A=2.0



OBSOLETE	PA-46	MOON GRAY	2.0	2.25	T&R	1-1734081-4
			2.4	2.25	T&R	1-1734081-3
OBSOLETE	PA-9T	BLACK	2.0	1.5	T&R	1-1734081-5
				2.25	T&R	1-1734081-2
					TRAY	1-1734081-1
	HSG. MATERIAL	HSG. COLOR	DIM A	DIM B	PACKAGE	PART NUMBER

NOTE:  
 1. MATERIAL:  
 HOUSING: THERMOPLASTIC (SEE TABLE) WITH 30%GF, UL94V-0, BLACK COLOR.  
 CONTACT: PHOSPHOR BRONZE.  
 SHELL: BRASS.  
 BACK COVER: BRASS.  
 2. FINISH:  
 CONTACT: 0.762µm [30µ"] MIN. GOLD PLATING ON CONTACT AREA,  
 3.048µm [120µ"] MIN. BRIGHT TIN PLATING ON SOLDER TAILS.  
 1.27µm [50µ"] MIN. NICKEL UNDERPLATING OVERALL.  
 SHELL: 0.762µm [30µ"] MIN. NICKEL PLATED OVER  
 0.762µm [30µ"] MIN. Cu UNDERPLATING OVERALL.  
 BACK COVER: 0.762µm [30µ"] MIN. NICKEL PLATED OVER  
 0.762µm [30µ"] MIN. Cu UNDERPLATING OVERALL.  
 REFLOW SOLDER CAPABLE TO 245°C PER TE SPEC 109-201, CONDITION A.  
 REFLOW SOLDER CAPABLE TO 260°C PER TE SPEC 109-201, CONDITION B.

THIS DRAWING IS A CONTROLLED DOCUMENT.		DWN	TE Connectivity			
DIMENSIONS: MM		CHK				
TOLERANCES UNLESS OTHERWISE SPECIFIED:		APVD	NAME			
0 PLC ± - 1 PLC ± 0.35 2 PLC ± 0.25 3 PLC ± 0.15 4 PLC ± - ANGLES ± 3'		PRODUCT SPEC	USB CONNECTOR, RECEPTACLE 4 POSITION, SERIES A			
MATERIAL SEE NOTE		APPLICATION SPEC	SIZE	CAGE CODE	DRAWING NO	RESTRICTED TO
FINISH SEE NOTE		WEIGHT 2.01 GRAMS	A3	00779	C=1734081	
		CUSTOMER DRAWING	SCALE	SHEET	2 OF 19	REV E5

THIS DRAWING IS UNPUBLISHED.

RELEASED FOR PUBLICATION

AUG ,2006.

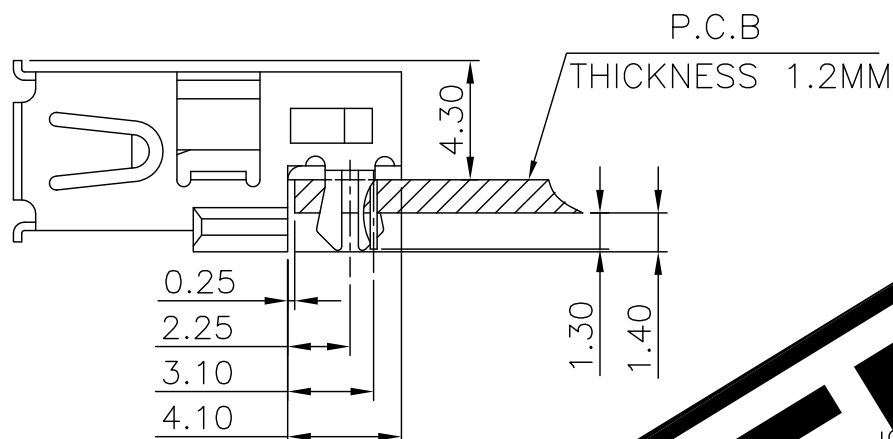
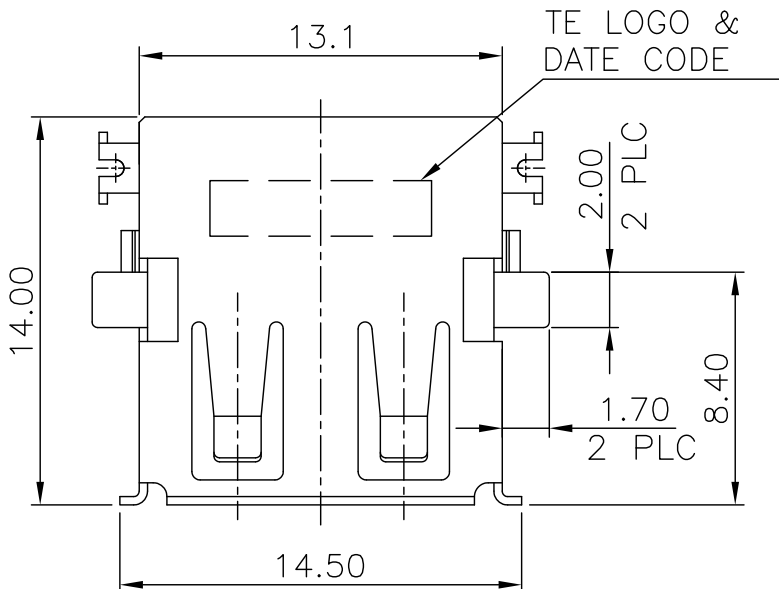
© COPYRIGHT 2009 BY TYCO ELECTRONICS CORPORATION. ALL RIGHTS RESERVED.

LOC DW

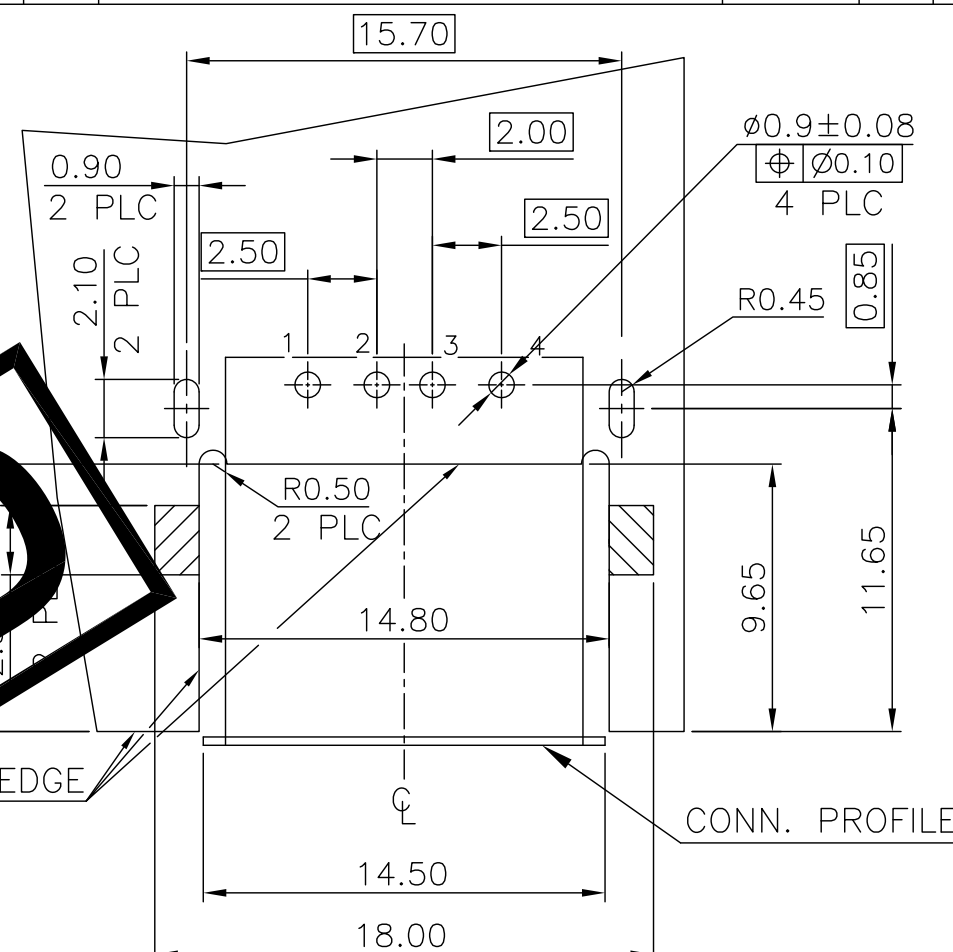
DIST

REVISIONS

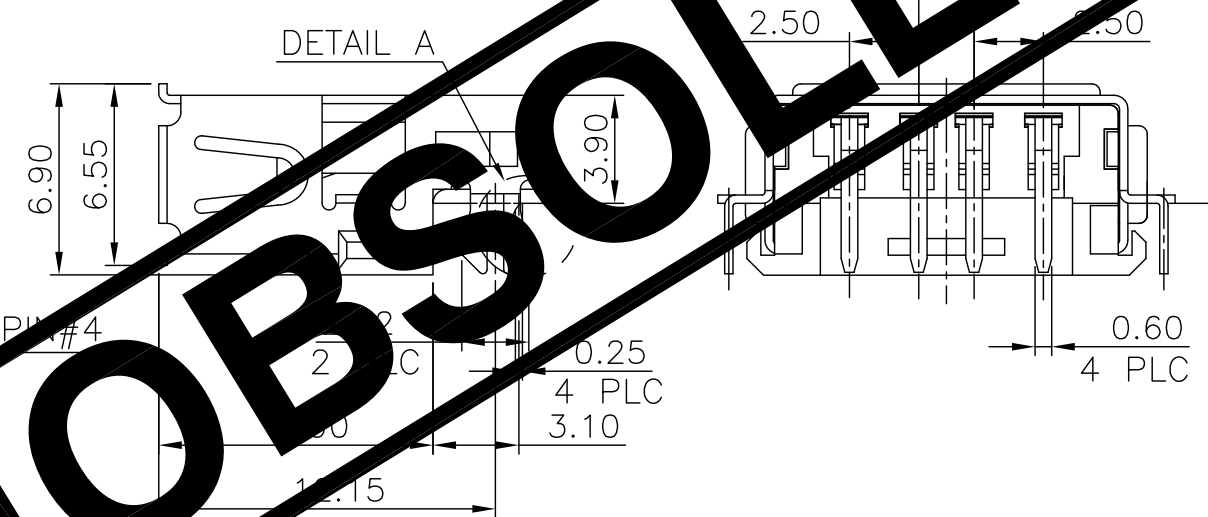
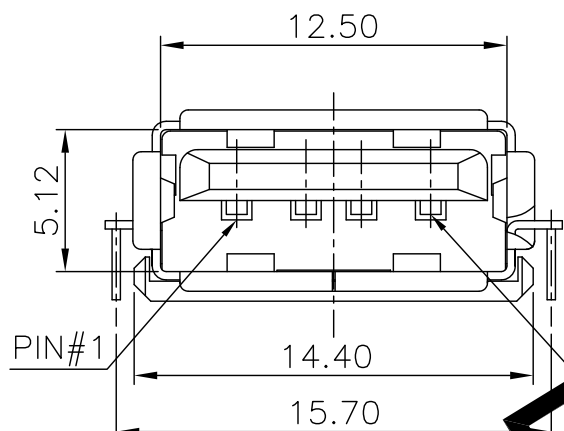
P	LTR	DESCRIPTION	DATE	DWN	APVD
		SEE SHEET 1.			



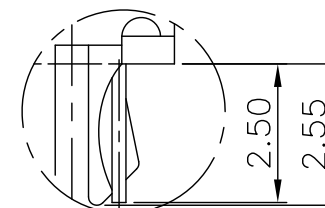
RECOMMENDED MOUNT DIMENSION



RECOMMEND P.C.B LAYOUT (THICKNESS=1.2mm) (COMPONENT SIDE) TOLERANCE±0.05



0.10 ALL PEGS



DETAIL A SCALE 2:1

OBSOLETE		TAPE & REEL	2-1734081-3
OBSOLETE		TUBE	2-1734081-2
OBSOLETE		TUBE	2-1734081-1
		SHELL PLATING	PACKAGE
			PART NUMBER

NOTE:

- MATERIAL:  
HOUSING: PA9T WITH 30%GF, UL94V-0, BLACK COLOR.  
CONTACT: PHOSPHOR BRONZE.  
SHELL: BRASS.
- FINISH:  
CONTACT: 0.762µm [30µ"] MIN. GOLD PLATING ON CONTACT AREA, 3.048µm [120µ"] MIN. BRIGHT TIN PLATING ON SOLDERTAILS.  
1.27µm [50µ"] MIN. NICKEL UNDERPLATING OVERALL.  
SHELL:  $\Delta$ 0.762µm [30µ"] MIN. TIN PLATED OVER  
0.762µm [30µ"] MIN. Cu UNDERPLATING OVERALL.  
 $\Delta$ 0.762µm [30µ"] MIN. NICKEL PLATED OVER  
0.762µm [30µ"] MIN. Cu UNDERPLATING OVERALL.
- REFLOW SOLDER CAPABLE TO 260°C PER TE SPEC 109-201, CONDITION B.

THIS DRAWING IS A CONTROLLED DOCUMENT.		DWN	TE Connectivity	
DIMENSIONS: MM		CHK		
TOLERANCES UNLESS OTHERWISE SPECIFIED:		APVD	NAME	
0 PLC ± -		PRODUCT SPEC	USB CONNECTOR, RECEPTACLE 4 POSITION, SERIES A	
1 PLC ± 0.35		APPLICATION SPEC	SIZE	CAGE CODE
2 PLC ± 0.25		WEIGHT	A3	00779
3 PLC ± 0.15		CUSTOMER DRAWING	DRAWING NO	
4 PLC ± -			C=1734081	
ANGLES ± 3'			RESTRICTED TO	
MATERIAL	FINISH		SCALE	SHEET
SEE NOTE	SEE NOTE			3 of 19
				REV E5

THIS DRAWING IS UNPUBLISHED.

RELEASED FOR PUBLICATION

AUG ,2006.

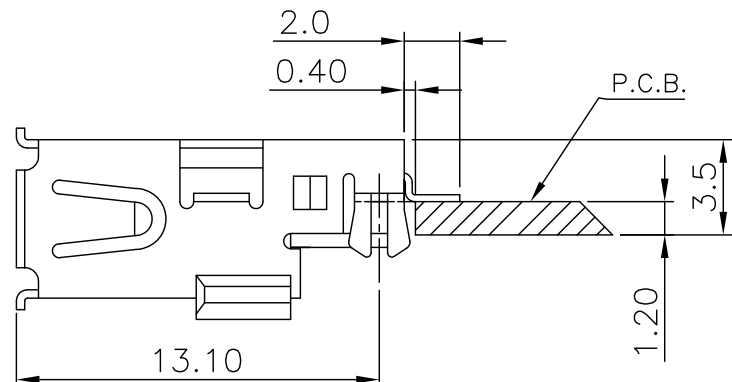
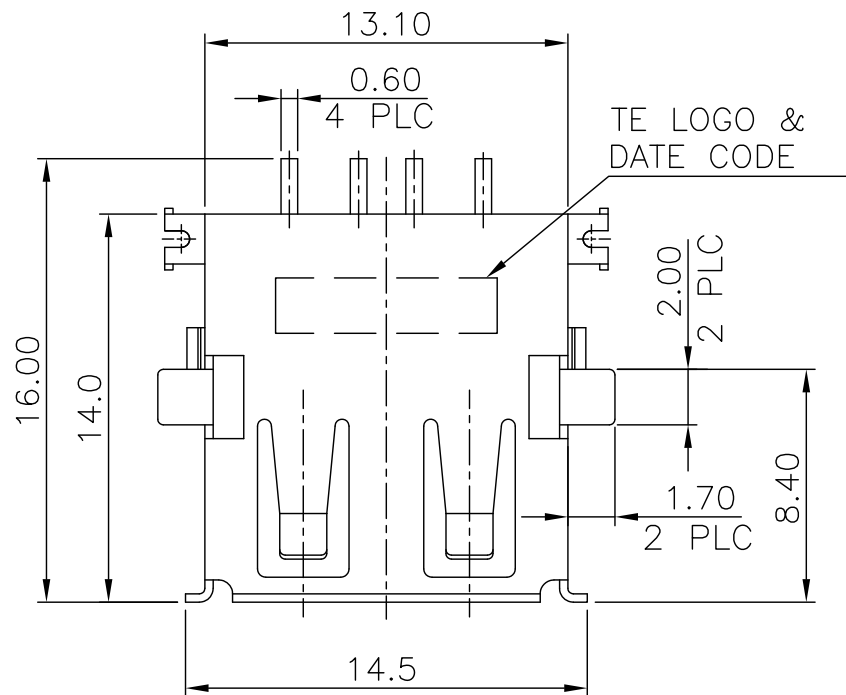
© COPYRIGHT 2009 BY TYCO ELECTRONICS CORPORATION. ALL RIGHTS RESERVED.

LOC DW

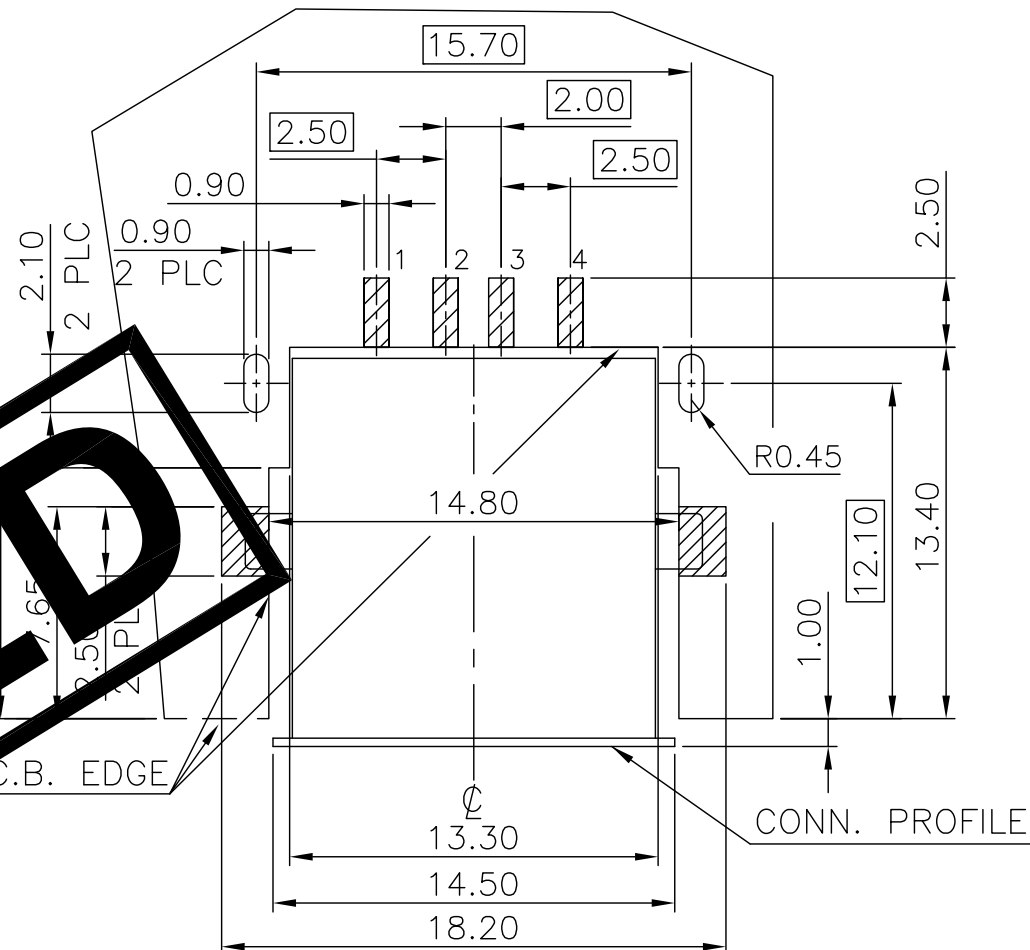
DIST

REVISIONS

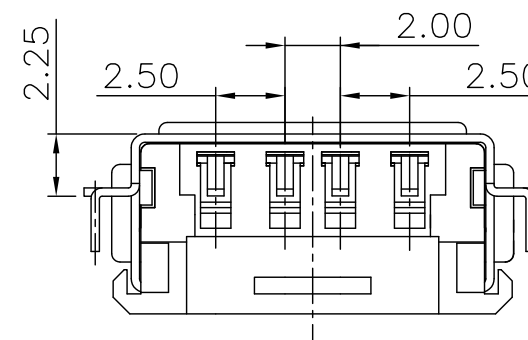
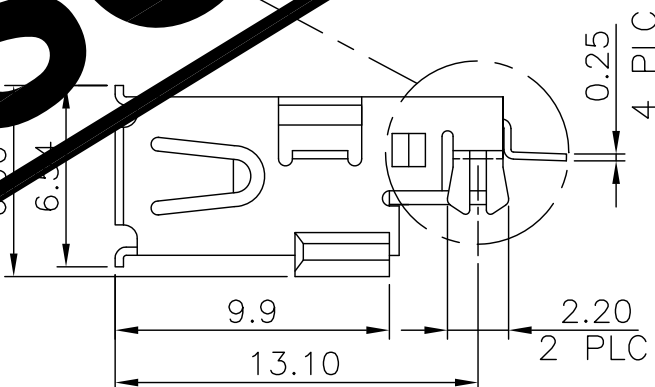
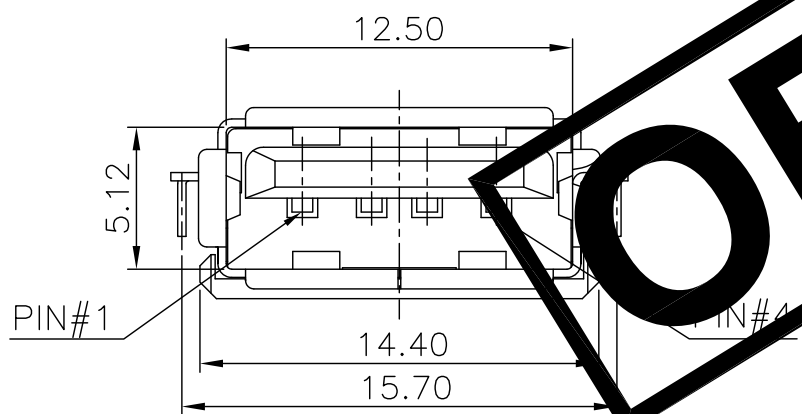
P	LTR	DESCRIPTION	DATE	DWN	APVD
		SEE SHEET 1.			



RECOMMENDED MOUNT DIMENSION



RECOMMEND P.C.B LAYOUT (THICKNESS=1.2mm) (COMPONENT SIDE) TOLERANCE±0.05



**OBSELETED**

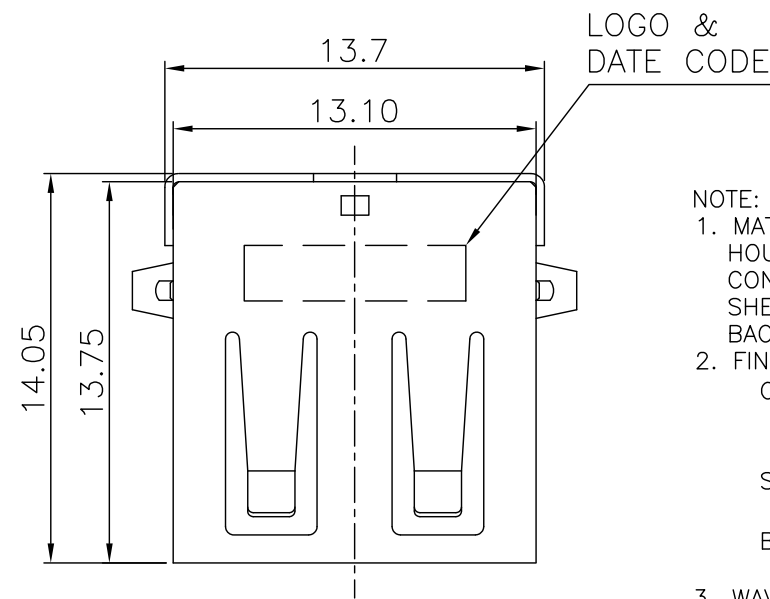
TAPE & REEL	3-1734081-1
PACKAGE	PART NUMBER

NOTE:  
 1. MATERIAL:  
 HOUSING: PA9T WITH 30%GF, UL94V-0, BLACK COLOR.  
 CONTACT: PHOSPHOR BRONZE.  
 SHELL: BRASS.  
 2. FINISH:  
 CONTACT: 0.762µm [30µ"] MIN. GOLD PLATING ON CONTACT AREA,  
 3.048µm [120µ"] MIN. BRIGHT TIN PLATING ON SOLDERTAILS.  
 1.27µm [50µ"] MIN. NICKEL UNDERPLATING OVERALL.  
 SHELL: 0.762µm [30µ"] MIN. NICKEL PLATED OVER  
 0.762µm [30µ"] MIN. Cu UNDERPLATING OVERALL.  
 3. REFLOW SOLDER CAPABLE TO 260°C PER TE SPEC 109-201, CONDITION B.

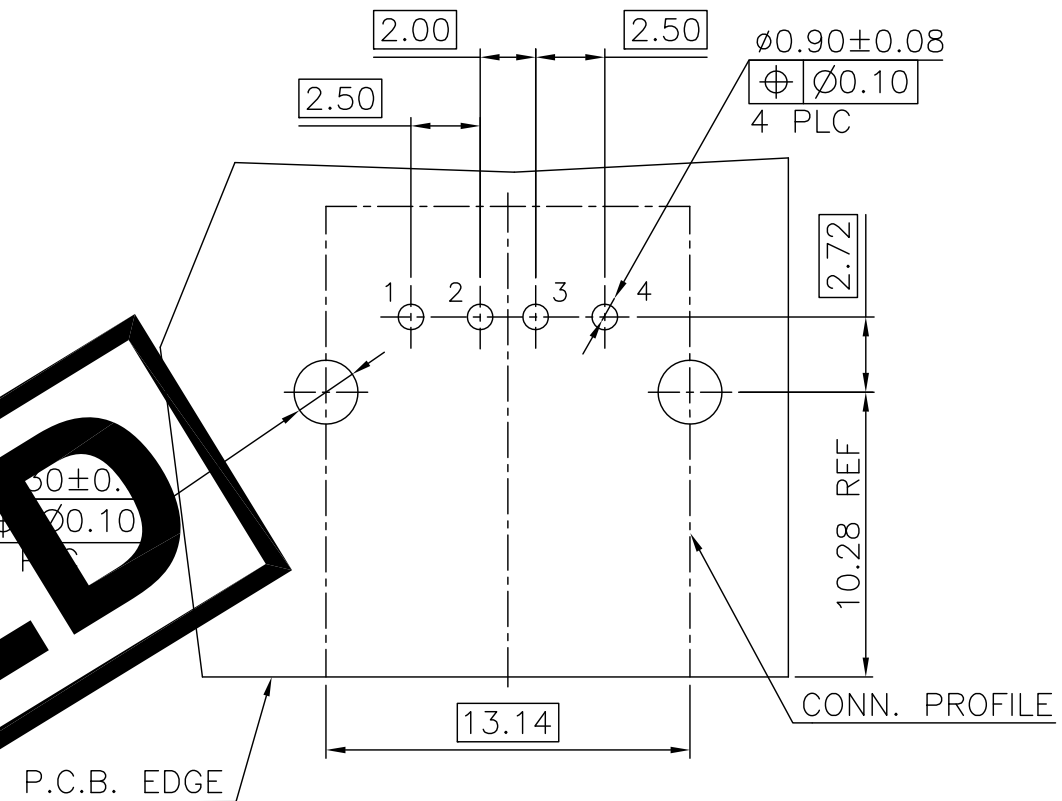
THIS DRAWING IS A CONTROLLED DOCUMENT.		DWN		TE Connectivity	
DIMENSIONS: MM		CHK			
TOLERANCES UNLESS OTHERWISE SPECIFIED:		APVD		NAME	
0 PLC ± - 1 PLC ± 0.35 2 PLC ± 0.25 3 PLC ± 0.15 4 PLC ± - ANGLES ± 3°		PRODUCT SPEC		USB CONNECTOR, RECEPTACLE 4 POSITION, SERIES A	
MATERIAL		WEIGHT		SIZE	
SEE NOTE		1.54 GRAMS		CAGE CODE	
		CUSTOMER DRAWING		DRAWING NO	
				A300779C-1734081	
		SCALE		RESTRICTED TO	
		SHEET		-	
		4 OF 19		REV E5	

THIS DRAWING IS UNPUBLISHED. RELEASED FOR PUBLICATION AUG ,2006.  
 © COPYRIGHT 2009 BY TYCO ELECTRONICS CORPORATION. ALL RIGHTS RESERVED.

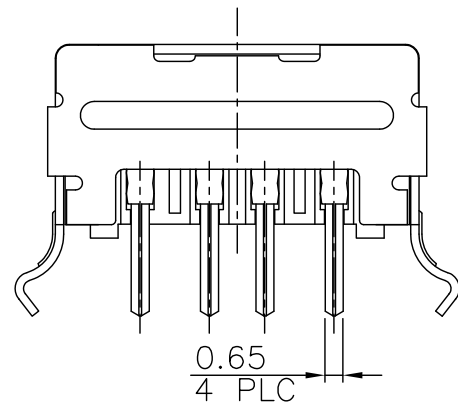
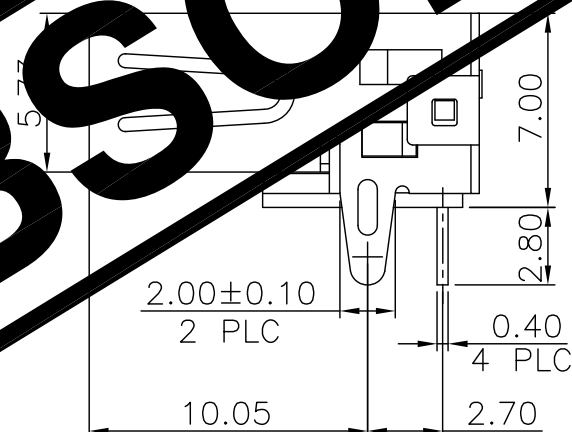
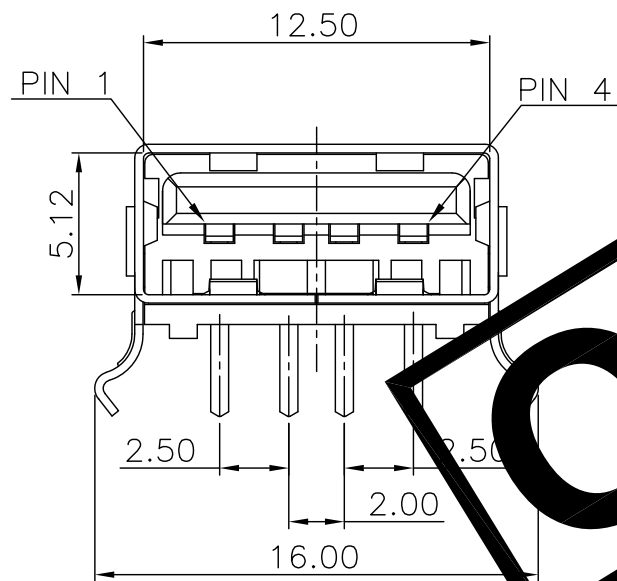
LOC	DIST	REVISIONS			
P	LTR	DESCRIPTION	DATE	DWN	APVD
DW	/	SEE SHEET 1.			



- NOTE:
- MATERIAL:  
 HOUSING: PBT WITH 30%GF, UL94V-0, COLOR: SEE TABLE.  
 CONTACT: PHOSPHOR BRONZE.  
 SHELL: BRASS.  
 BACK COVER: BRASS.
  - FINISH:  
 CONTACT: 0.762µm [30µ"] MIN. GOLD PLATING ON CONTACT AREA.  
 3.048µm [120µ"] MIN. BRIGHT TIN PLATING ON SOLDER TAILS.  
 1.27µm [50µ"] MIN. NICKEL UNDERPLATING OVER PLATING.  
 SHELL: 0.762µm [30µ"] MIN. NICKEL PLATED OVER  
 0.762µm [30µ"] MIN. Cu UNDERPLATING OVER PLATING.  
 BACK COVER: 0.762µm [30µ"] MIN. NICKEL PLATED OVER  
 0.762µm [30µ"] MIN. Cu UNDERPLATING OVER PLATING.
  - WAVE SOLDER CAPABLE TO 245°C PER TE SPEC 10-0002, CONDITION A.



RECOMMEND P.C.B LAYOUT (THICKNESS=1.6mm)  
 (COMPONENT SIDE) TOLERANCE±0.05



**OBSOLETE**

OBSOLETE	TRAY	MOON GRAY	4-1734081-2
		NONMETALLIC PEARL	4-1734081-1
	PACKAGE	HSG. COLOR	PART NUMBER

THIS DRAWING IS A CONTROLLED DOCUMENT.		DWN	TE Connectivity			
DIMENSIONS: MM		CHK				
TOLERANCES UNLESS OTHERWISE SPECIFIED:		APVD	NAME			
0 PLC ± - 1 PLC ± 0.35 2 PLC ± 0.25 3 PLC ± 0.15 4 PLC ± - ANGLES ± 3°		PRODUCT SPEC	USB CONNECTOR, RECEPTACLE 4 POSITION, SERIES A			
MATERIAL SEE NOTE		APPLICATION SPEC	SIZE	CAGE CODE	DRAWING NO	RESTRICTED TO
FINISH SEE NOTE		WEIGHT	A3	00779	C=1734081	
		CUSTOMER DRAWING	SCALE	SHEET	5 of 19	REV E5

THIS DRAWING IS UNPUBLISHED.

RELEASED FOR PUBLICATION

AUG ,2006.

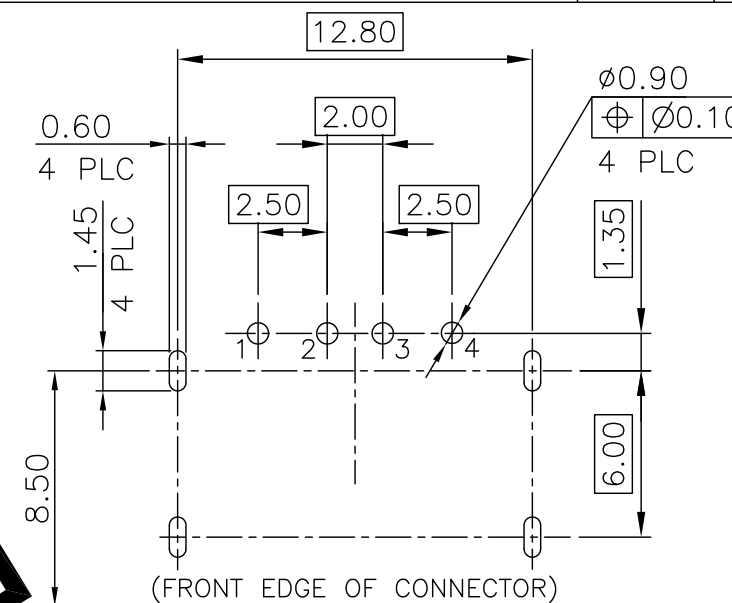
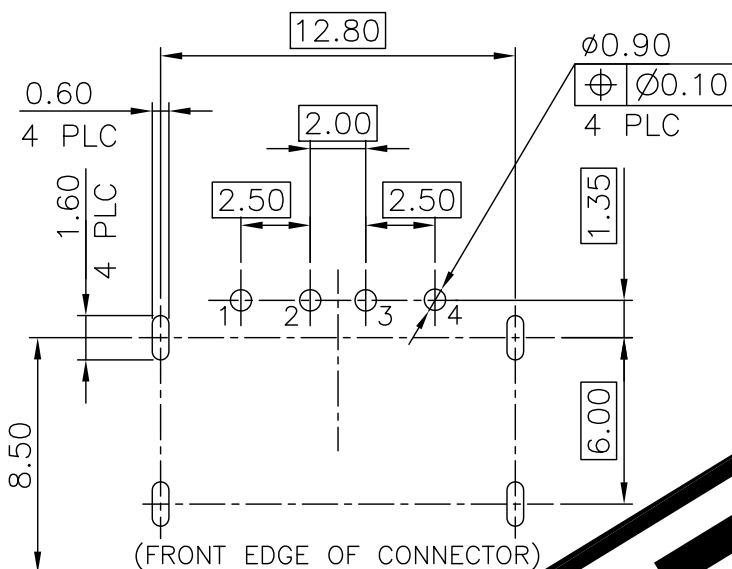
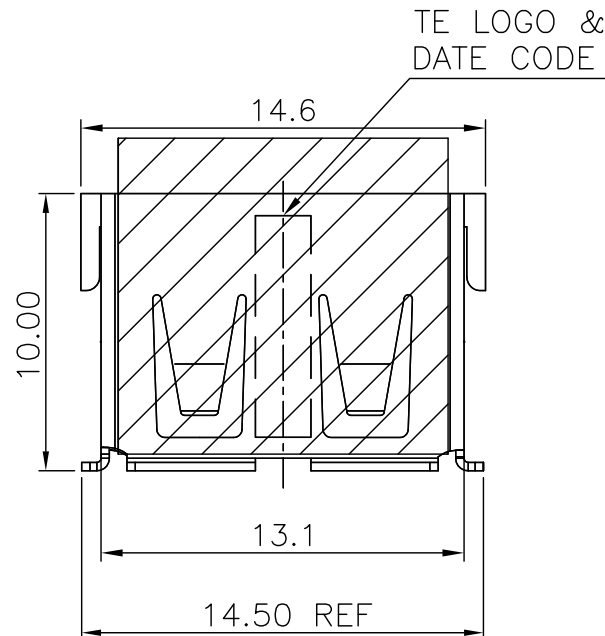
© COPYRIGHT 2009 BY TYCO ELECTRONICS CORPORATION. ALL RIGHTS RESERVED.

LOC DW

DIST

REVISIONS

P	LTR	DESCRIPTION	DATE	DWN	APVD
		SEE SHEET 1.			



RECOMMEND P.C.B LAYOUT (THICKNESS=1.4mm) (COMPONENT SIDE) TOLERANCE ±0.05

RECOMMEND P.C.B LAYOUT (THICKNESS=1.4mm) (COMPONENT SIDE) TOLERANCE ±0.05

NOTE:

1. MATERIAL:

HOUSING: PA9T WITH 30%GF, UL94V-0, BLACK COLOR.

CONTACT: PHOSPHOR BRONZE.

SHELL: BRASS.

MYLAR: KAPTON, 0.06 THICKNESS

△ FINISH:

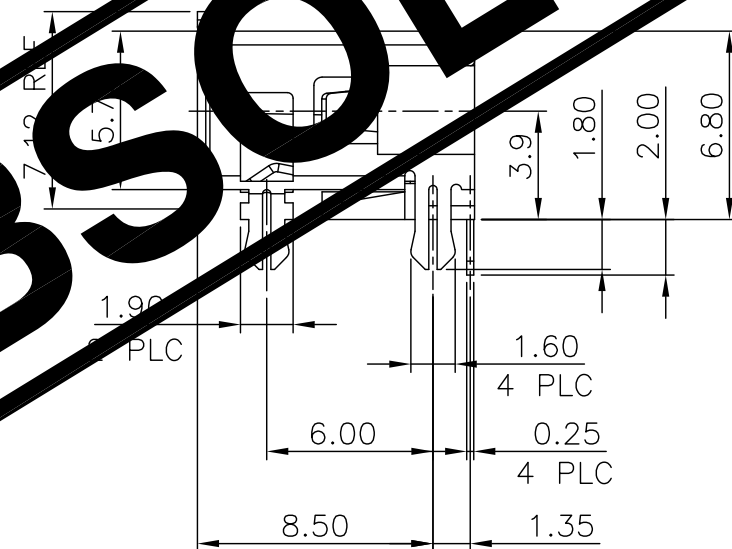
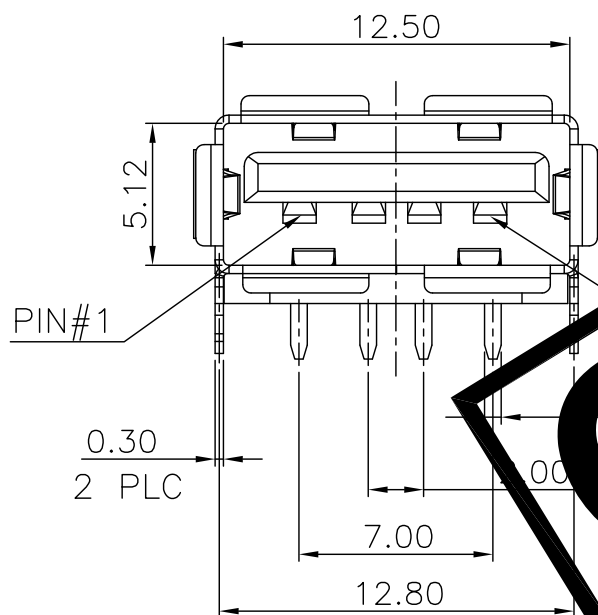
CONTACT: 0.762µm [30µ"] MIN. GOLD PLATING ON CONTACT AREA,  
2.54µm [100µ"] MIN. MATTE-TIN PLATING ON SOLDER TAIL,  
WITH ENTIRE CONTACT UNDERPLATED 1.27µm [50µ"] MIN. NICKEL  
SHELL: 1.27µm [50µ"] MIN. NICKEL PLATING.

△ FINISH:

CONTACT: 0.254µm [10µ"] MIN. GOLD PLATING ON CONTACT AREA.  
2.54µm [100µ"] MIN. MATTE-TIN PLATING ON SOLDER TAIL,  
WITH ENTIRE CONTACT UNDERPLATED 1.27µm [50µ"] MIN. NICKEL  
SHELL: 1.27µm [50µ"] MIN. NICKEL PLATING.  
SPUTTERING/BLACK PLATING IN FRONT FLANGE.

4. REFLOW SOLDER CAPABLE TO 260°C PER TE TEST SPEC 109-201, CONDITION B.

△ CONNECTOR MOUNTING WITH ZERO INSERTION FORCE.



**OBSOLETE**

OBSOLETE	△	TAPE&REEL W/O MYLAR	5-1734081-3
	△	TAPE&REEL W/ MYLAR	5-1734081-2
	△	TAPE&REEL W/ MYLAR	5-1734081-1
	FINISH	PACKAGE	PART NUMBER

THIS DRAWING IS A CONTROLLED DOCUMENT.		DWN	<b>STE</b> TE Connectivity	
DIMENSIONS: MM		CHK		
TOLERANCES UNLESS OTHERWISE SPECIFIED:		APVD	NAME	
0 PLC ± -		PRODUCT SPEC	USB CONNECTOR, RECEPTACLE 4 POSITION, SERIES A	
1 PLC ± 0.35		APPLICATION SPEC	SIZE	CAGE CODE
2 PLC ± 0.25			A3	00779
3 PLC ± 0.15			DRAWING NO	RESTRICTED TO
4 PLC ± -			C=1734081	
ANGLES ± 3'		WEIGHT	SHEET	
MATERIAL SEE NOTE		1.54 GRAMS	6 of 19	
FINISH SEE NOTE		CUSTOMER DRAWING	REV E5	

THIS DRAWING IS UNPUBLISHED.

RELEASED FOR PUBLICATION

AUG ,2006.

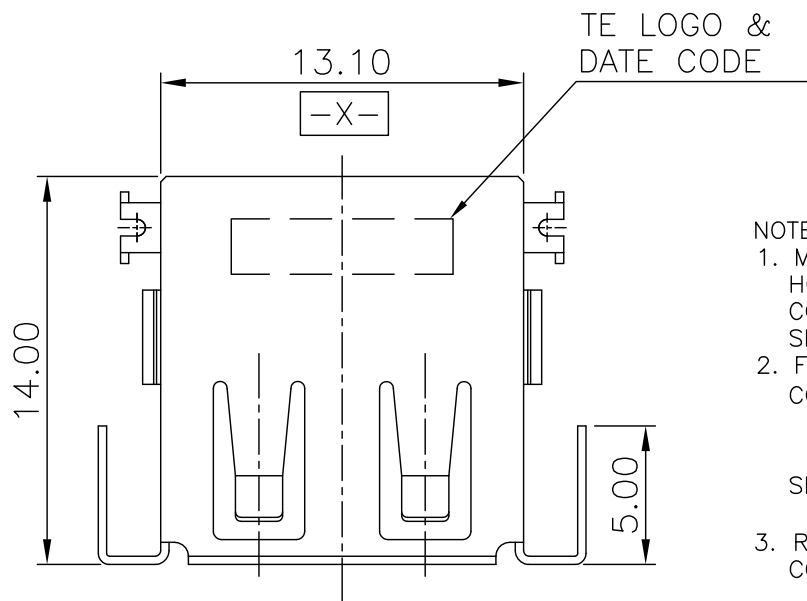
© COPYRIGHT 2009 BY TYCO ELECTRONICS CORPORATION. ALL RIGHTS RESERVED.

LOC DW

DIST

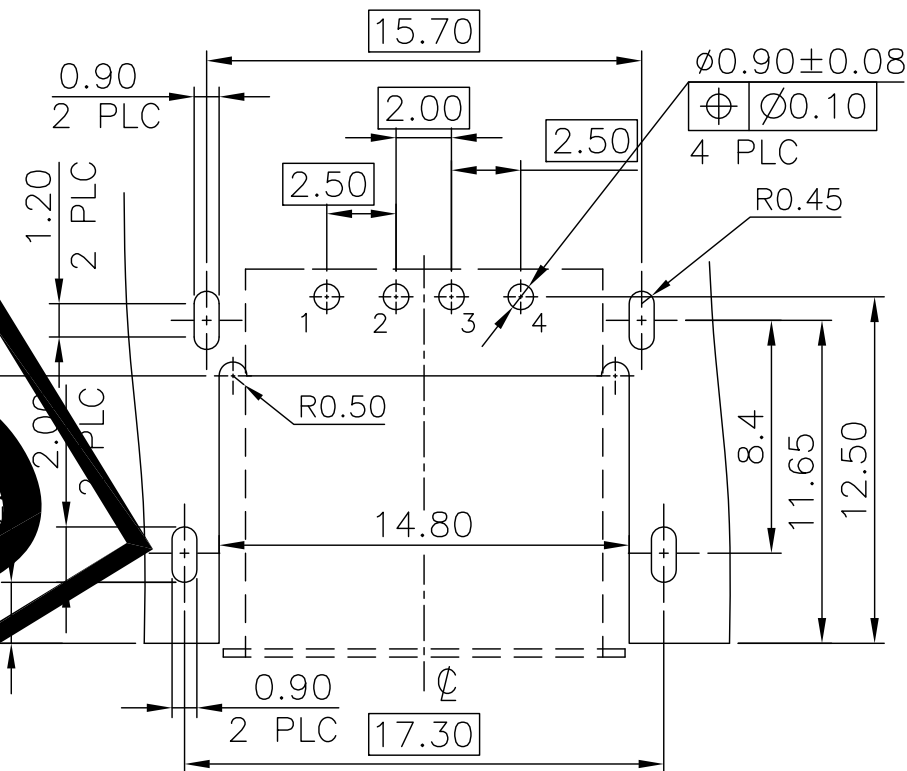
REVISIONS

P	LTR	DESCRIPTION	DATE	DWN	APVD
		SEE SHEET 1.			

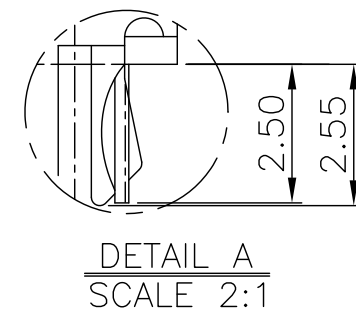
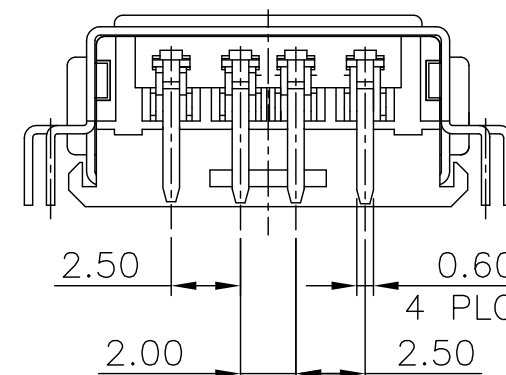
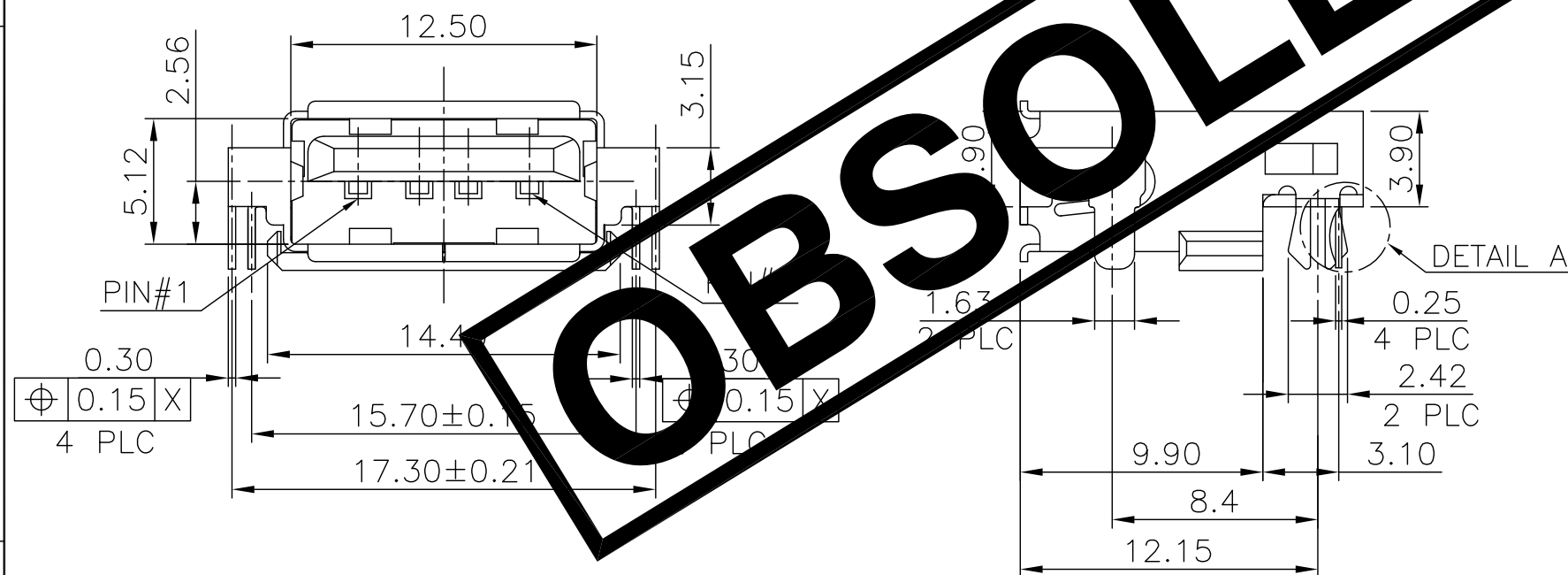


NOTE:

- MATERIAL:**  
HOUSING: PA9T WITH 30%GF, UL94V-0, BLACK COLOR.  
CONTACT: PHOSPHOR BRONZE.  
SHELL: BRASS.
- FINISH:**  
CONTACT: 0.762µm [30µ"] MIN. GOLD PLATING ON CONTACT AREA,  
3.048µm [120µ"] MIN. BRIGHT TIN PLATING ON SOLDER TAILS  
1.27µm [50µ"] MIN. NICKEL UNDERPLATING OVERALL.  
SHELL: 0.762µm [30µ"] MIN. NICKEL PLATED OVER  
0.762µm [30µ"] MIN. Cu UNDERPLATING OVERALL.
- REFLOW SOLDER CAPABLE TO 260°C PER TE SPEC 109-2  
CONDITION B.**



RECOMMEND P.C.B LAYOUT (THICKNESS=1.6mm)  
(COMPONENT SIDE) TOLERANCE±0.05



OBSOLETE	TAPE & REEL	6-1734081-2
	TUBE	6-1734081-1
	PACKAGE	PART NUMBER

THIS DRAWING IS A CONTROLLED DOCUMENT.		DWN	TE Connectivity			
DIMENSIONS: MM		CHK				
TOLERANCES UNLESS OTHERWISE SPECIFIED:		APVD	NAME			
0 PLC ± - 1 PLC ± 0.35 2 PLC ± 0.25 3 PLC ± 0.15 4 PLC ± - ANGLES ± 3°		PRODUCT SPEC	USB CONNECTOR, RECEPTACLE 4 POSITION, SERIES A			
MATERIAL SEE NOTE		APPLICATION SPEC	SIZE	CAGE CODE	DRAWING NO	RESTRICTED TO
FINISH SEE NOTE		WEIGHT	A3	00779	C=1734081	
		CUSTOMER DRAWING	SCALE	SHEET	7 of 19	REV E5

**OBSOLETE**

THIS DRAWING IS UNPUBLISHED.

RELEASED FOR PUBLICATION

AUG ,2006.

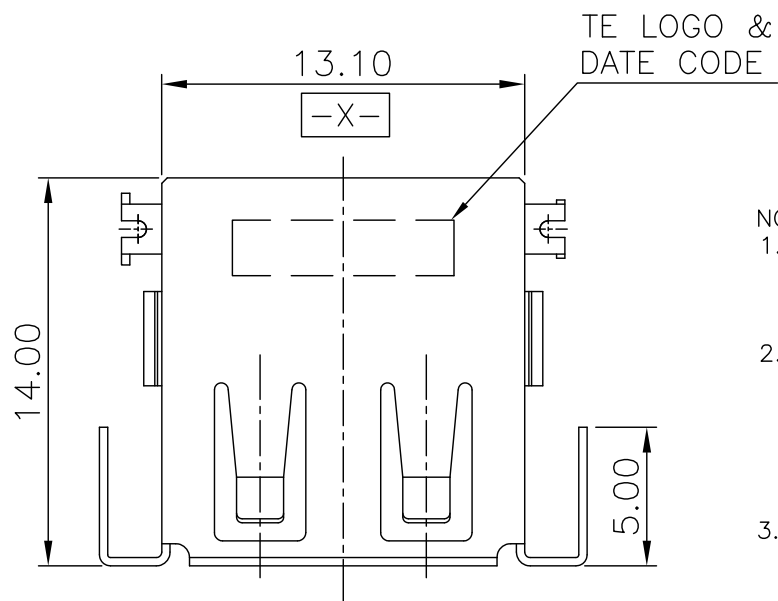
© COPYRIGHT 2009 BY TYCO ELECTRONICS CORPORATION. ALL RIGHTS RESERVED.

LOC DW

DIST

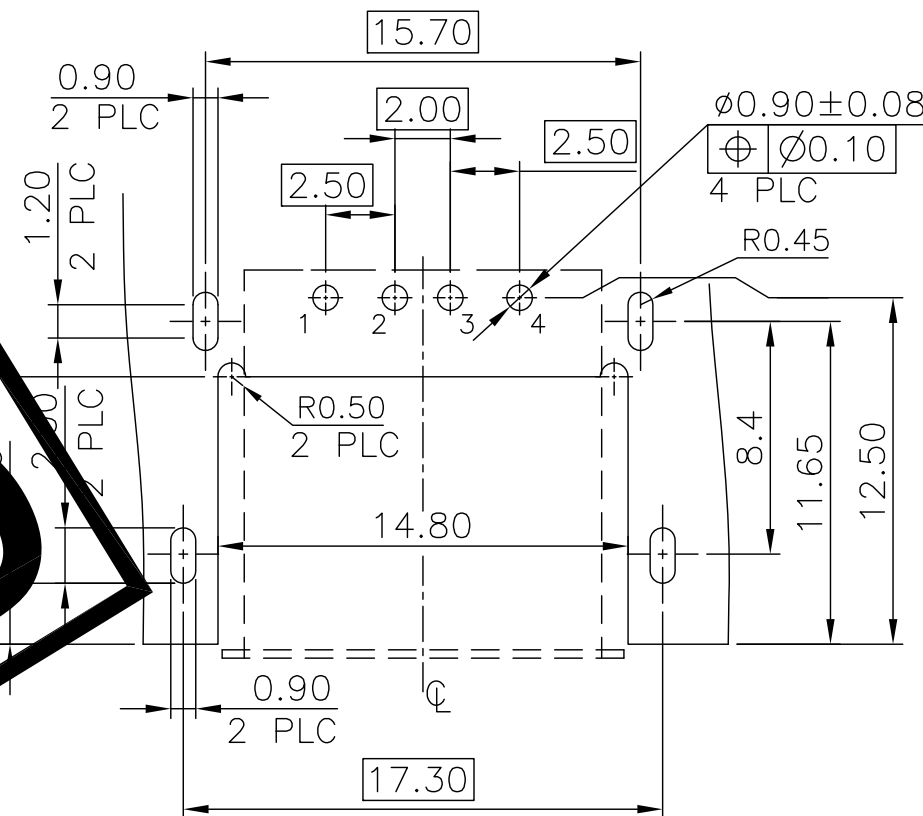
REVISIONS

P	LTR	DESCRIPTION	DATE	DWN	APVD
		SEE SHEET 1.			

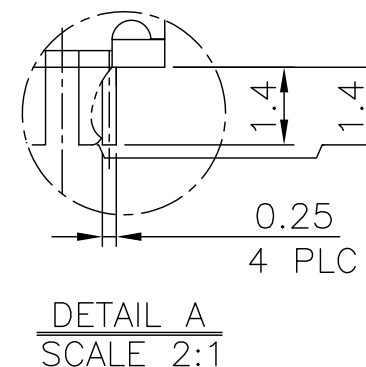
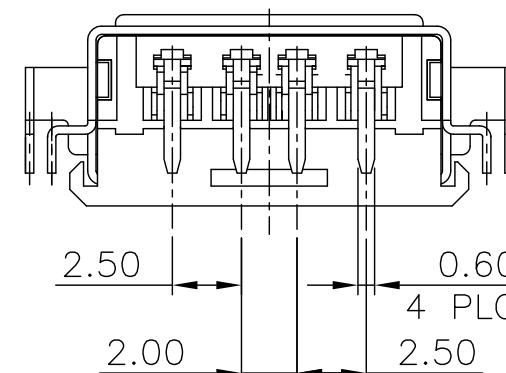
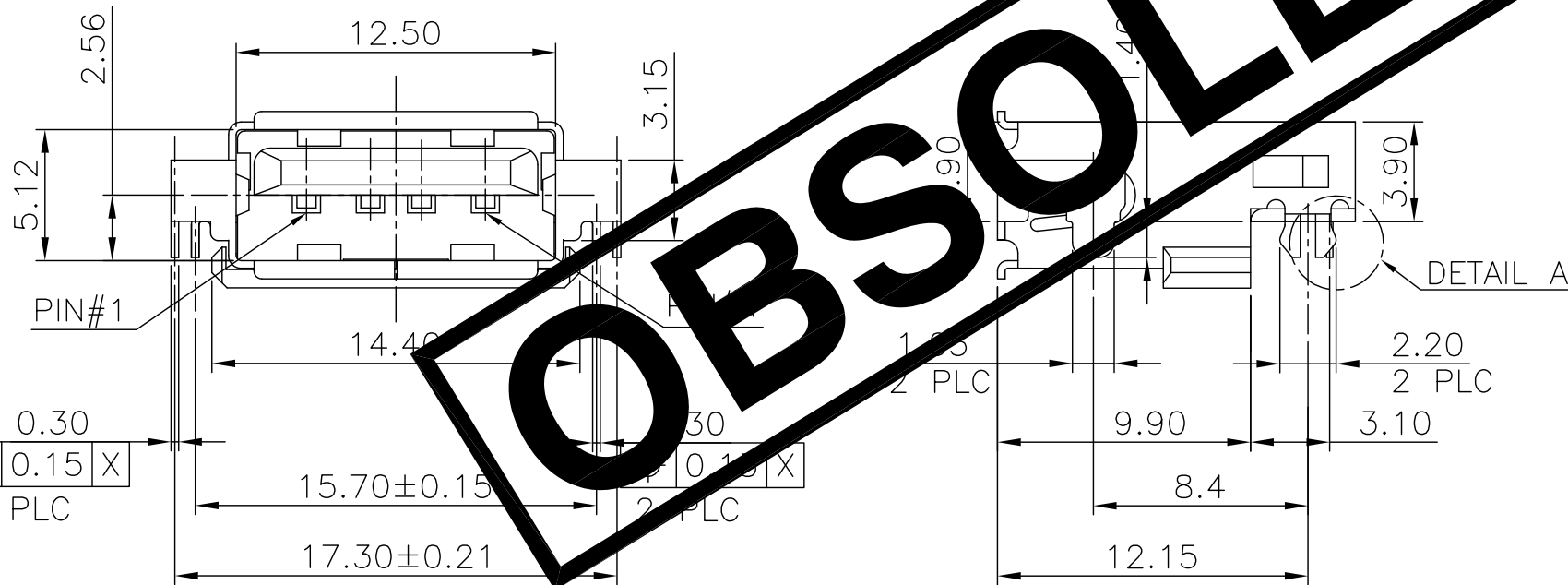


NOTE:

- MATERIAL:  
HOUSING: PA9T WITH 30%GF, UL94V-0, BLACK COLOR.  
CONTACT: PHOSPHOR BRONZE.  
SHELL: BRASS.
- FINISH:  
CONTACT: 0.762μm [30μ"] MIN. GOLD PLATING ON CONTACT AREA,  
3.048μm [120μ"] MIN. BRIGHT TIN PLATING ON SOLDER PINS.  
1.27μm [50μ"] MIN. NICKEL UNDERPLATING OVERALL.  
SHELL: 0.762μm [30μ"] MIN. NICKEL PLATED OVER  
0.762μm [30μ"] MIN. Cu UNDERPLATING OVER ALL.
- REFLOW SOLDER CAPABLE TO 260°C PER TE SPEC 109-2  
CONDITION B.



RECOMMEND P.C.B LAYOUT (THICKNESS=0.8mm)  
(COMPONENT SIDE) TOLERANCE±0.05



TAPE & REEL	6-1734081-3
PACKAGE	PART NUMBER

THIS DRAWING IS A CONTROLLED DOCUMENT.		DWN	<b>STE</b> TE Connectivity	
DIMENSIONS: MM		CHK		
TOLERANCES UNLESS OTHERWISE SPECIFIED:		APVD	NAME	
0 PLC ± -		PRODUCT SPEC	USB CONNECTOR, RECEPTACLE 4 POSITION, SERIES A	
1 PLC ± 0.35		APPLICATION SPEC	SIZE	CAGE CODE
2 PLC ± 0.25		WEIGHT	A3	00779
3 PLC ± 0.15		CUSTOMER DRAWING	DRAWING NO	
4 PLC ± -		SCALE	C=1734081	
ANGLES ± 3'		SHEET	RESTRICTED TO	
MATERIAL	FINISH	8 OF 19	REV E5	
SEE NOTE	SEE NOTE			



THIS DRAWING IS UNPUBLISHED.

RELEASED FOR PUBLICATION

AUG ,2006.

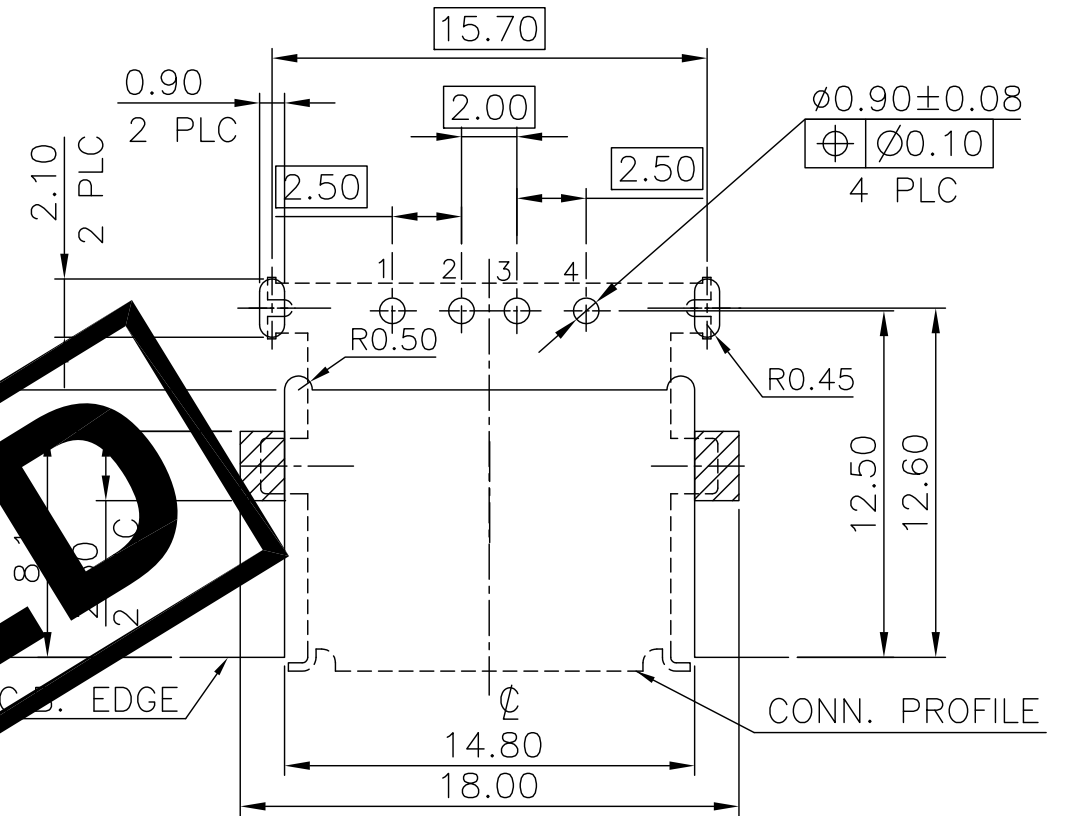
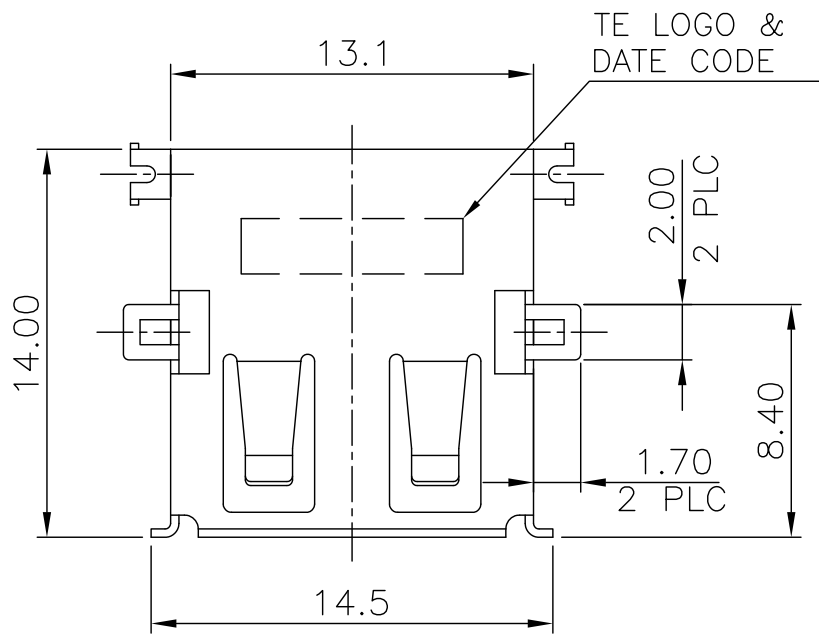
© COPYRIGHT 2009 BY TYCO ELECTRONICS CORPORATION. ALL RIGHTS RESERVED.

LOC DW

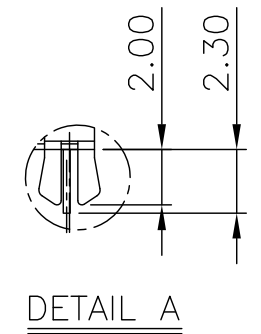
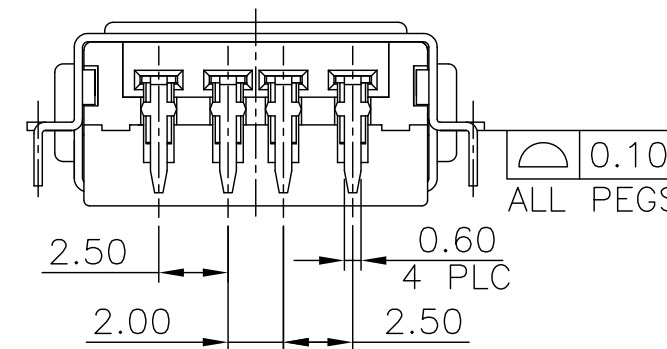
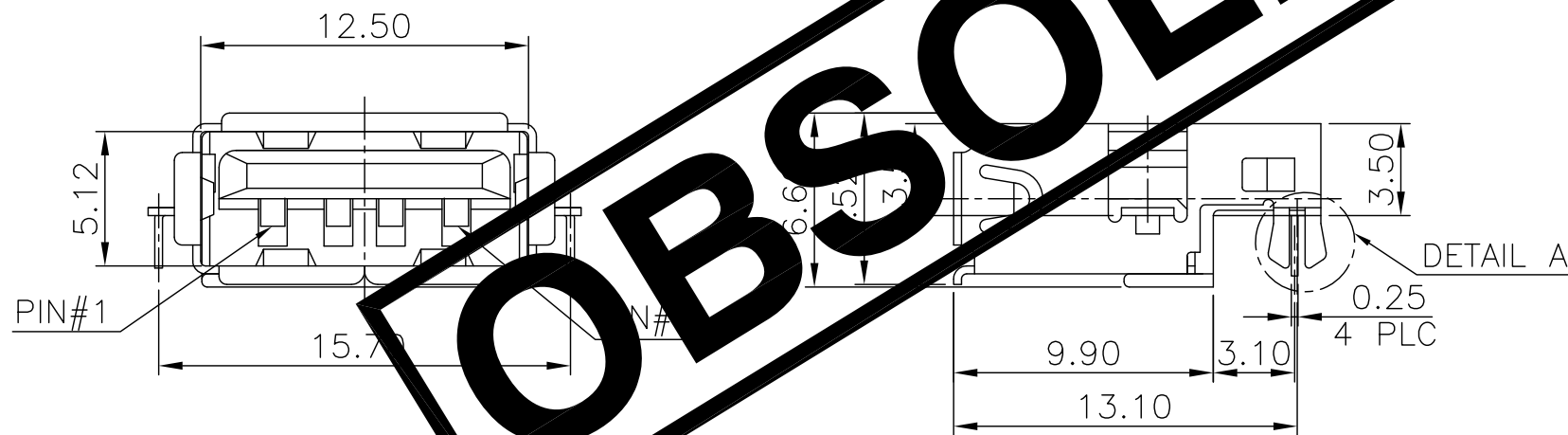
DIST

REVISIONS

P	LTR	DESCRIPTION	DATE	DWN	APVD
		SEE SHEET 1.			



RECOMMEND P.C.B LAYOUT (THICKNESS=1.2mm)  
(COMPONENT SIDE) TOLERANCE±0.05



NOTE:

- MATERIAL:  
HOUSING: PA9T WITH 30%GF, UL 94 V-0, BLACK COLOR.  
CONTACT: PHOSPHOR BRONZE.  
SHELL: BRASS.
- FINISH:  
CONTACT: 0.762μm [30μ"] MIN. GOLD PLATING ON CONTACT AREA,  
3.048μm [120μ"] MIN. BRIGHT TIN PLATING ON SOLDER TAILS.  
1.27μm [50μ"] MIN. NICKEL UNDERPLATING OVERALL.  
SHELL: 0.762μm [30μ"] MIN. NICKEL PLATED OVER  
0.762μm [30μ"] MIN. Cu UNDERPLATING OVERALL.
- REFLOW SOLDER CAPABLE TO 260°C PER TE SPEC 109-201,  
CONDITION B.

TAPE & REEL	7-1734081-1
PACKAGE	PART NUMBER

THIS DRAWING IS A CONTROLLED DOCUMENT.		DWN		TE Connectivity	
DIMENSIONS: MM		CHK			
TOLERANCES UNLESS OTHERWISE SPECIFIED:		APVD		NAME	
0 PLC ± - 1 PLC ± 0.35 2 PLC ± 0.25 3 PLC ± 0.15 4 PLC ± - ANGLES ± 3°		PRODUCT SPEC		USB CONNECTOR, RECEPTACLE 4 POSITION, SERIES A	
MATERIAL SEE NOTE		FINISH SEE NOTE		RESTRICTED TO	
		WEIGHT 1.57 GRAMS		SIZE A3	
		CUSTOMER DRAWING		CAGE CODE 00779	
				DRAWING NO 1734081	
				SCALE	
				SHEET 9 of 19	
				REV E5	

THIS DRAWING IS UNPUBLISHED.

RELEASED FOR PUBLICATION

AUG ,2006.

© COPYRIGHT 2009 BY TYCO ELECTRONICS CORPORATION. ALL RIGHTS RESERVED.

LOC DW

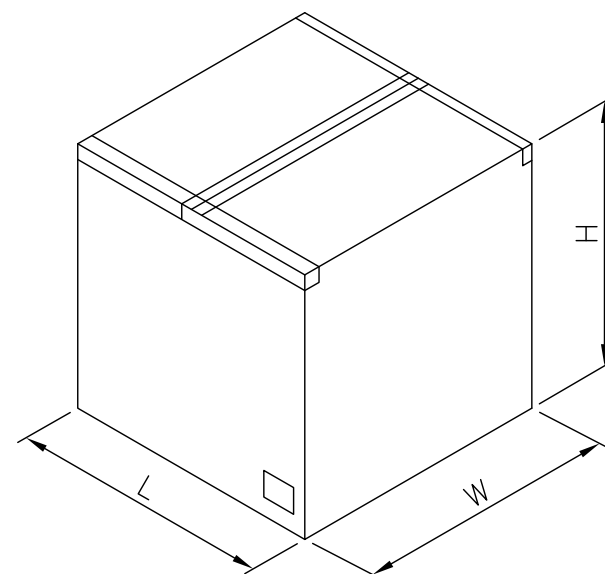
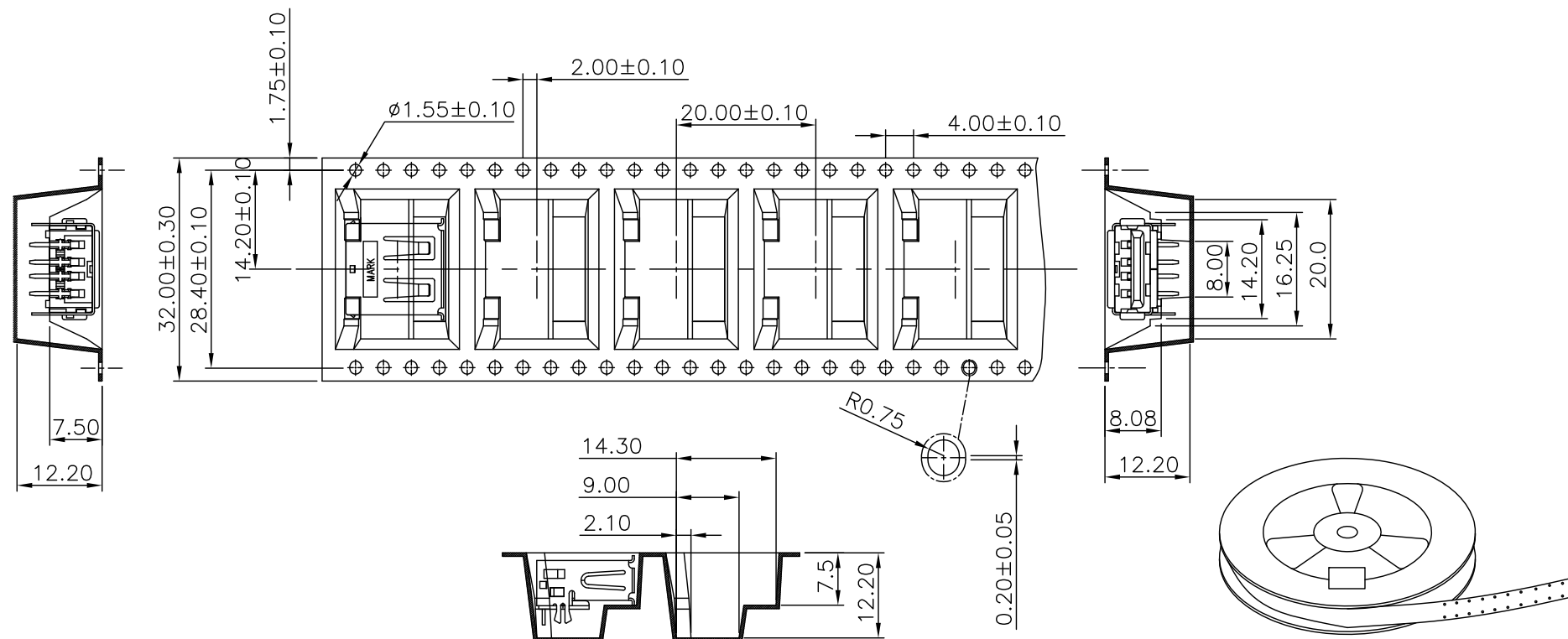
DIST

REVISIONS

P	LTR	DESCRIPTION	DATE	DWN	APVD
		SEE SHEET 1.			

NOTES:

- MATERIAL:  
REEL: PS.  
EMBOSSED CARRIER: PS.  
COVER TAPE: PBT.
- DIMENSION :  
TAPE REEL:  $\phi 330\text{mm} \times 37.1\text{mm}$   
SHIPPING CARTON: L=350mm,W=350mm, H=350mm
- QUANTITY :  
PRIMARY PACKING: 250PCS/REEL  
SECONDARY PACKING: 9 REELS/CARTON(2,250PCS).
- WEIGHT :  
NET WEIGHT: 0.50 KG/REEL, 4.52 KG/CARTON.  
GROSS WEIGHT: 1.00 KG/REEL, 9.50 KG/CARTON.
- PEELING RESISTANCE: 20G TO 130G.
- PEELING SPEED: 300MM/MIN.



SHIPPING CARTON

9.50 Kg	4.52 Kg	250	9	2250	1-1734081-4	OBSOLETE
					1-1734081-3	
					1-1734081-2	
GROSS WEIGHT	NET WEIGHT	PCS/REEL	REELS/CARTON	QUANTITY	PART NUMBER	

THIS DRAWING IS A CONTROLLED DOCUMENT.		DWN	<b>STE</b> TE Connectivity			
DIMENSIONS: MM		CHK				
TOLERANCES UNLESS OTHERWISE SPECIFIED:		APVD	NAME			
0 PLC ± -		PRODUCT SPEC	USB CONNECTOR, RECEPTACLE 4 POSITION, SERIES A			
1 PLC ± -		APPLICATION SPEC	SIZE	CAGE CODE	DRAWING NO	RESTRICTED TO
2 PLC ± -		WEIGHT	A3	00779	C=1734081	-
3 PLC ± -		CUSTOMER DRAWING	SCALE	SHEET	10 of 19	REV E5
4 PLC ± -						
ANGLES ± -						
MATERIAL						
FINISH						

THIS DRAWING IS UNPUBLISHED.

RELEASED FOR PUBLICATION

AUG ,2006.

© COPYRIGHT 2009 BY TYCO ELECTRONICS CORPORATION. ALL RIGHTS RESERVED.

LOC DW

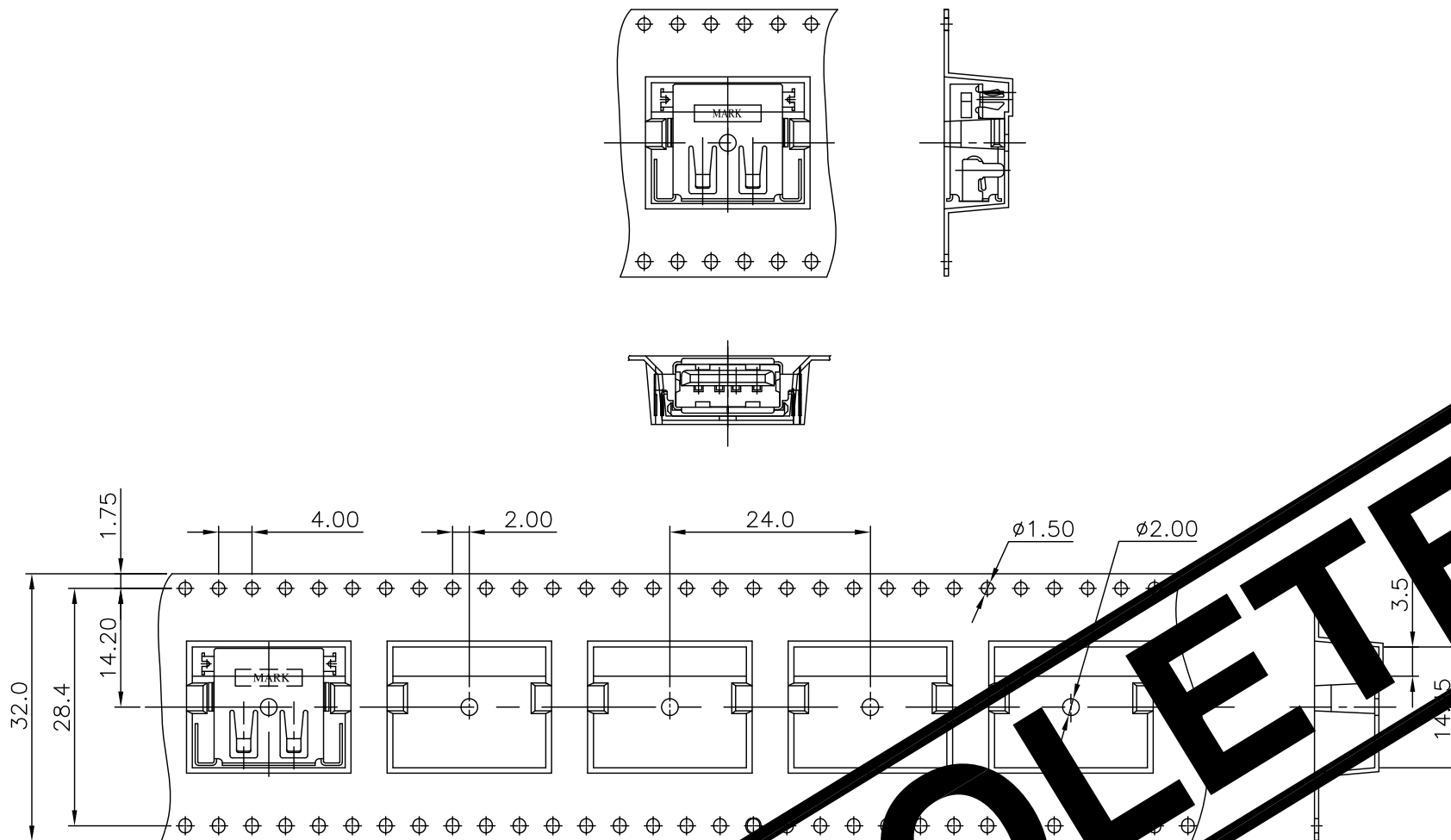
DIST

REVISIONS

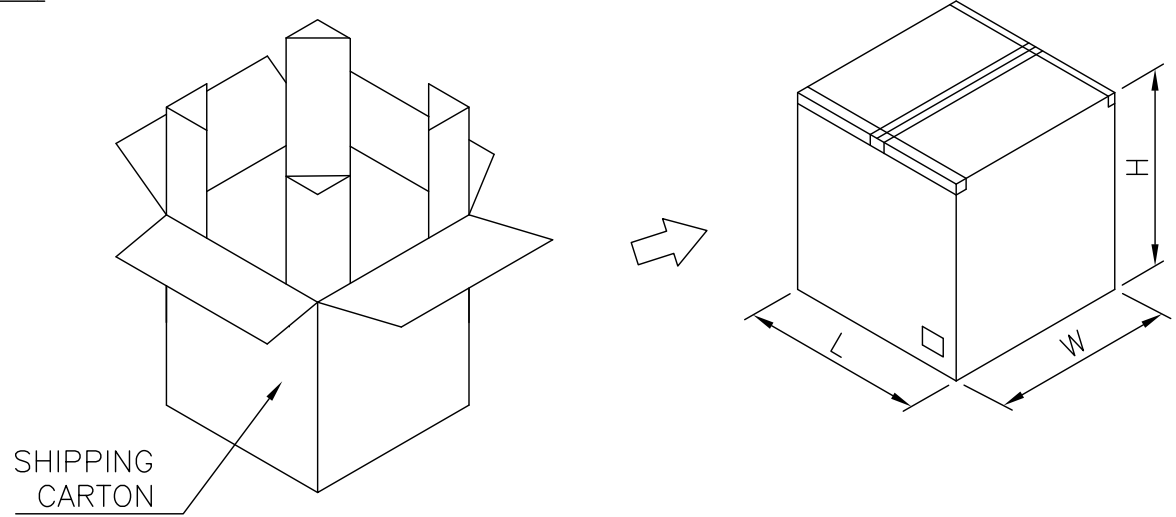
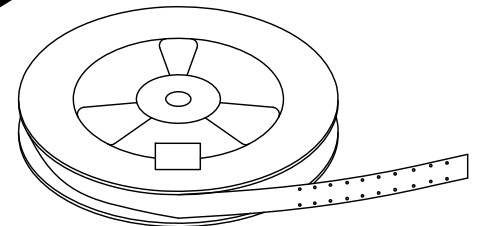
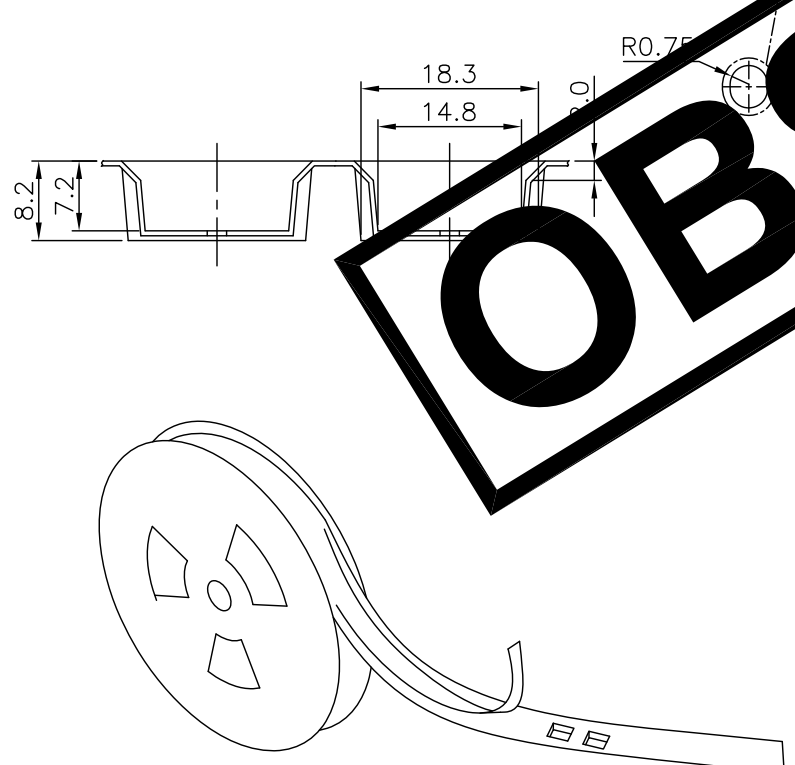
P	LTR	DESCRIPTION	DATE	DWN	APVD
		SEE SHEET 1.			

NOTES:

- MATERIAL:  
REEL: PS.  
EMBOSSED CARRIER: PS.  
COVER TAPE: PBT.
- DIMENSION :  
TAPE REEL:  $\phi 330\text{mm} \times 37.1\text{mm}$   
SHIPPING CARTON: L=350mm,W=350mm, H=350mm
- QUANTITY :  
PRIMARY PACKING: 300PCS/REEL  
SECONDARY PACKING: 8 REELS/CARTON(2,400PCS).
- WEIGHT :  
NET WEIGHT: 0.44KG/REEL, 4.00 KG/CARTON.  
GROSS WEIGHT: 1.81 KG/REEL, 9.05 KG/CARTON.
- PEELING RESISTANCE: 20G TO 130G.  
PEELING SPEED: 300MM/MIN.



**OBSOLETE**



9.05 Kg	4.00 Kg	300	8	2400	6-1734081-2
GROSS WEIGHT	NET WEIGHT	PCS/REEL	REELS /CARTON	QUANTITY	PART NUMBER

THIS DRAWING IS A CONTROLLED DOCUMENT.		DWN	<b>STE</b> TE Connectivity		
DIMENSIONS: MM		CHK			
TOLERANCES UNLESS OTHERWISE SPECIFIED:		APVD	NAME		
0 PLC	± -	PRODUCT SPEC	USB CONNECTOR, RECEPTACLE 4 POSITION, SERIES A		
1 PLC	± -	APPLICATION SPEC			
2 PLC	± -	WEIGHT			
3 PLC	± -	CUSTOMER DRAWING			
4 PLC	± -	SCALE	SIZE	CAGE CODE	DRAWING NO
ANGLES	± -	SHEET	A3	00779	C=1734081
MATERIAL	FINISH	RESTRICTED TO	-		
		REV	E5		

THIS DRAWING IS UNPUBLISHED.

RELEASED FOR PUBLICATION

AUG ,2006.

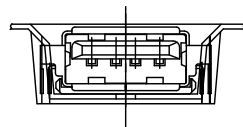
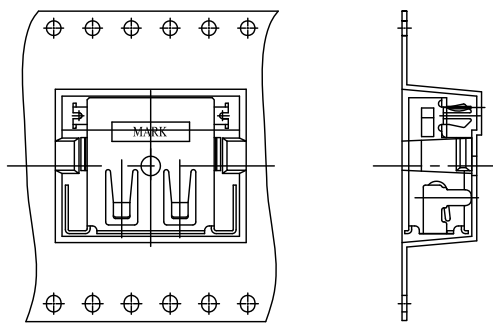
© COPYRIGHT 2009 BY TYCO ELECTRONICS CORPORATION. ALL RIGHTS RESERVED.

LOC DW

DIST

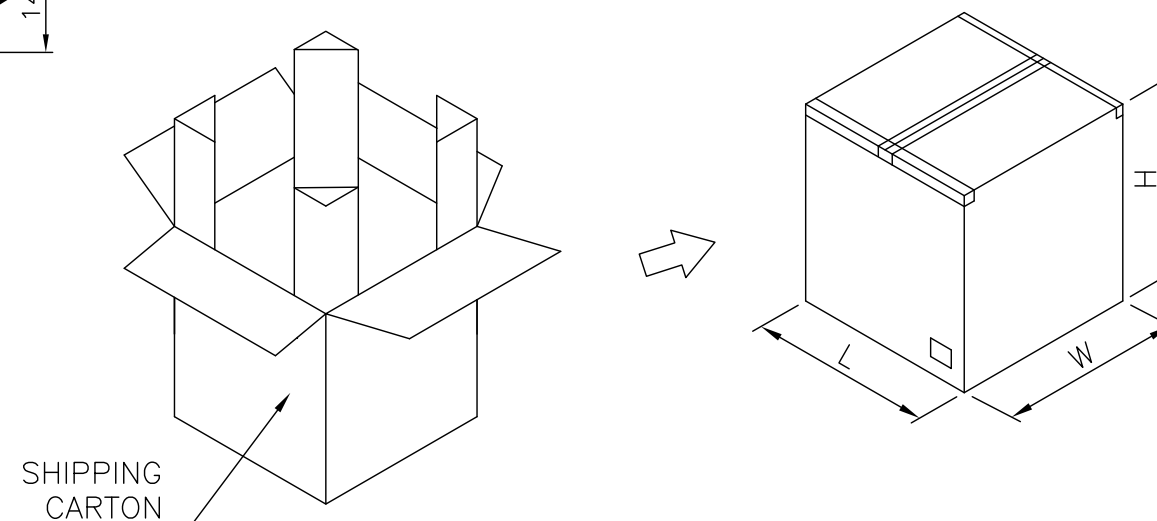
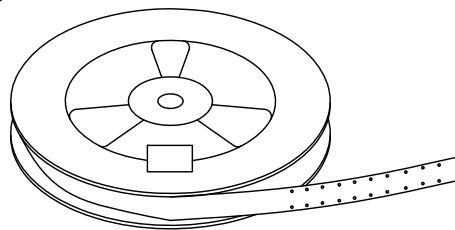
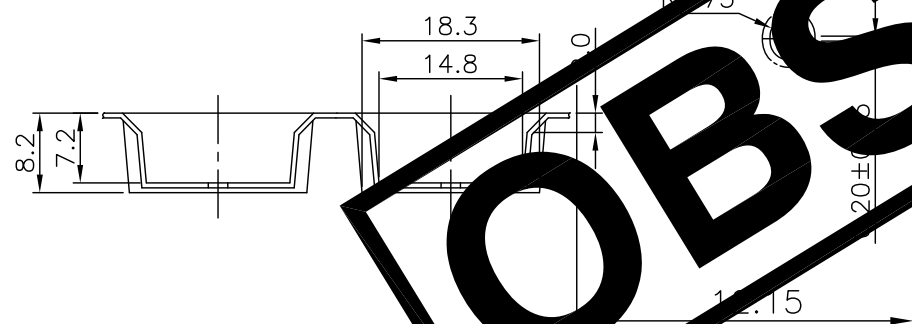
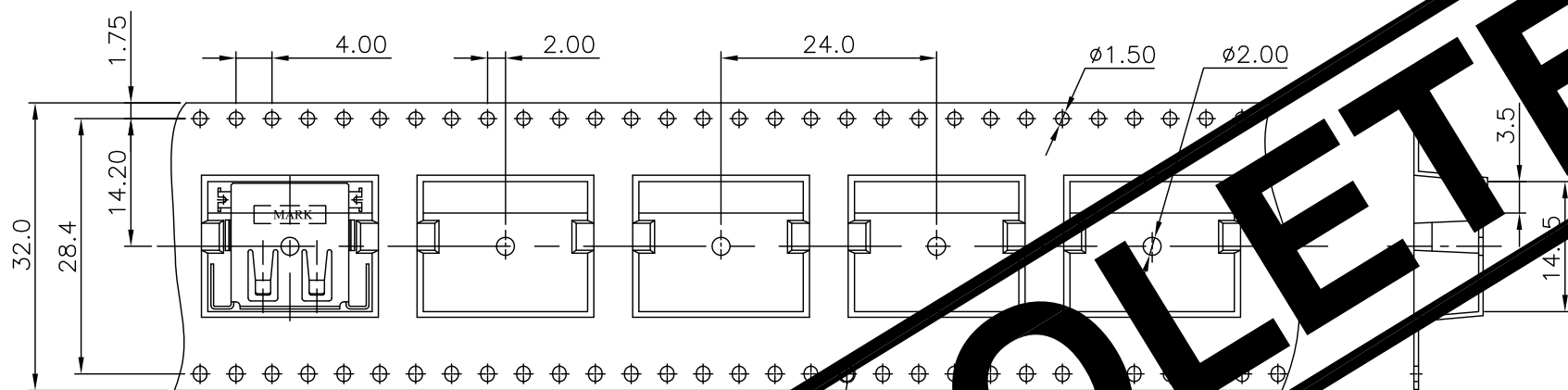
REVISIONS

P	LTR	DESCRIPTION	DATE	DWN	APVD
		SEE SHEET 1.			



NOTES:

- MATERIAL:  
REEL: PS.  
EMBOSSED CARRIER: PS.  
COVER TAPE: PBT.
- DIMENSION :  
TAPE REEL:  $\phi 330\text{mm} \times 37.1\text{mm}$   
SHIPPING CARTON: L=350mm,W=350mm, H=350mm
- QUANTITY :  
PRIMARY PACKING: 300PCS/REEL  
SECONDARY PACKING: 8 REELS/CARTON(2,400PCS).
- WEIGHT :  
NET WEIGHT: 0.44KG/REEL, 4.00 KG/CARTON.  
GROSS WEIGHT: 1.81 KG/REEL, 9.05 KG/CARTON.  
PEELING RESISTANCE: 20G TO 130G.
- PEELING SPEED: 300MM/MIN.



OBSOLETE

9.05 Kg	4.00 Kg	300	8	2400	6-1734081-3
GROSS WEIGHT	NET WEIGHT	PCS/REEL	REELS /CARTON	QUANTITY	PART NUMBER

THIS DRAWING IS A CONTROLLED DOCUMENT.		DWN	<b>TE</b> TE Connectivity		
DIMENSIONS: MM		CHK			
TOLERANCES UNLESS OTHERWISE SPECIFIED:		APVD	NAME USB CONNECTOR, RECEPTACLE 4 POSITION, SERIES A		
0 PLC ± -		PRODUCT SPEC			
1 PLC ± -		APPLICATION SPEC	SIZE	CAGE CODE	DRAWING NO
2 PLC ± -		WEIGHT	A3	00779	C=1734081
3 PLC ± -		CUSTOMER DRAWING	SCALE		SHEET
4 PLC ± -			-		12 of 19
ANGLES ± -					REV E5
MATERIAL					
FINISH					

THIS DRAWING IS UNPUBLISHED.

RELEASED FOR PUBLICATION

AUG ,2006.

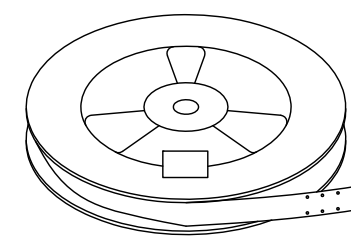
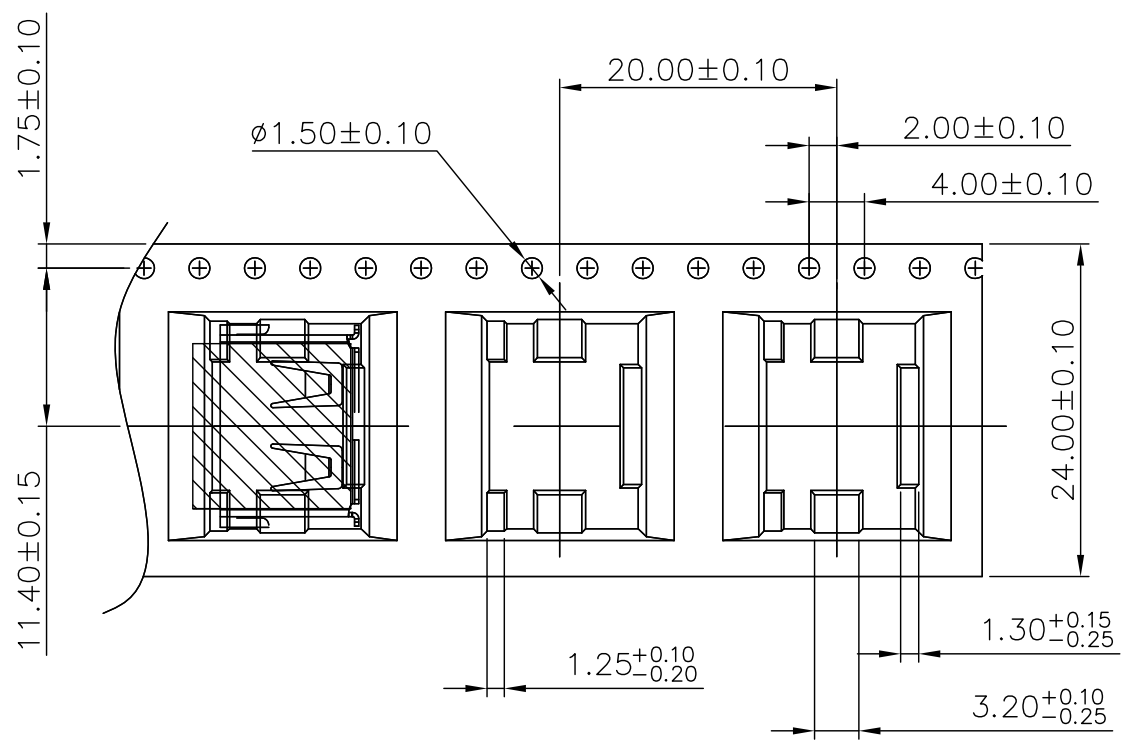
© COPYRIGHT 2009 BY TYCO ELECTRONICS CORPORATION. ALL RIGHTS RESERVED.

LOC DW

DIST

REVISIONS

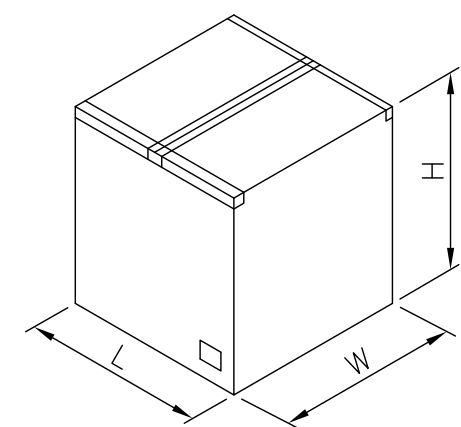
P	LTR	DESCRIPTION	DATE	DWN	APVD
		SEE SHEET 1.			



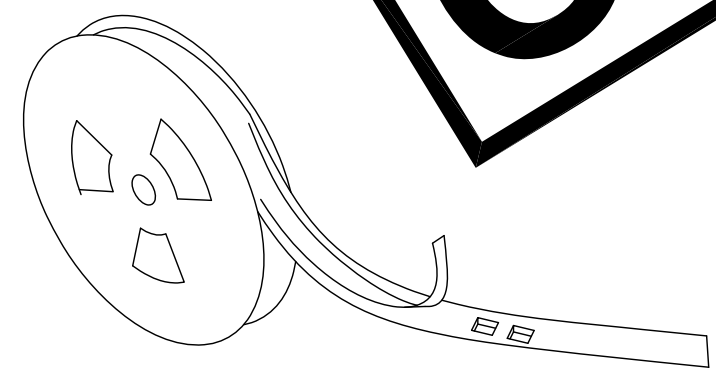
- NOTES:
- MATERIAL:  
REEL: PS.  
EMBOSSED CARRIER: PS.  
COVER TAPE: PBT.
  - DIMENSION :  
TAPE REEL:  $\phi 330\text{mm} \times 29.5\text{mm}$   
SHIPPING CARTON: L=350mm,W=350mm, H=400mm
  - QUANTITY :  
PRIMARY PACKING: 300PCS/REEL  
SECONDARY PACKING: 12 REELS/CARTON(3600PCS).
  - WEIGHT :  
NET WEIGHT: 0.46 KG/REEL, 5.55 KG/CARTON.  
GROSS WEIGHT: 0.89 KG/REEL, 10.65 KG/CARTON.
  - PEELING RESISTANCE: 20G TO 130G.
  - PEELING SPEED: 300MM/MIN.

**OBSOLETE**

SHIPPING  
CARTON



OBSOLETE	300	12	3600	10.65	5.55	5-1734081-3
						5-1734081-2
						5-1734081-1
	PCS/ REEL	REELS/ BOX	QUANTITY (PCS)	G/W (Kg)	N/W (Kg)	PART NUMBER



THIS DRAWING IS A CONTROLLED DOCUMENT.		DWN	TE Connectivity			
DIMENSIONS: MM		CHK				
TOLERANCES UNLESS OTHERWISE SPECIFIED:		APVD	NAME			
0 PLC ± -		PRODUCT SPEC	USB CONNECTOR, RECEPTACLE 4 POSITION, SERIES A			
1 PLC ± -		APPLICATION SPEC	SIZE	CAGE CODE	DRAWING NO	RESTRICTED TO
2 PLC ± -		WEIGHT	A3	00779	C=1734081	-
3 PLC ± -		CUSTOMER DRAWING	SCALE		SHEET	REV
4 PLC ± -			-		13 of 19	E5
ANGLES ± -						
FINISH						
MATERIAL						

THIS DRAWING IS UNPUBLISHED.

RELEASED FOR PUBLICATION

AUG ,2006.

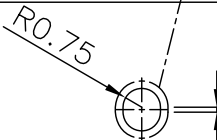
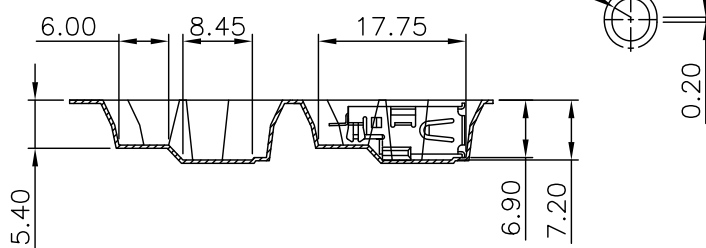
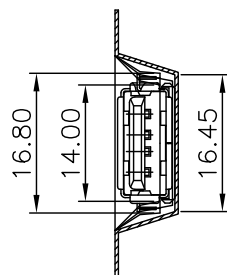
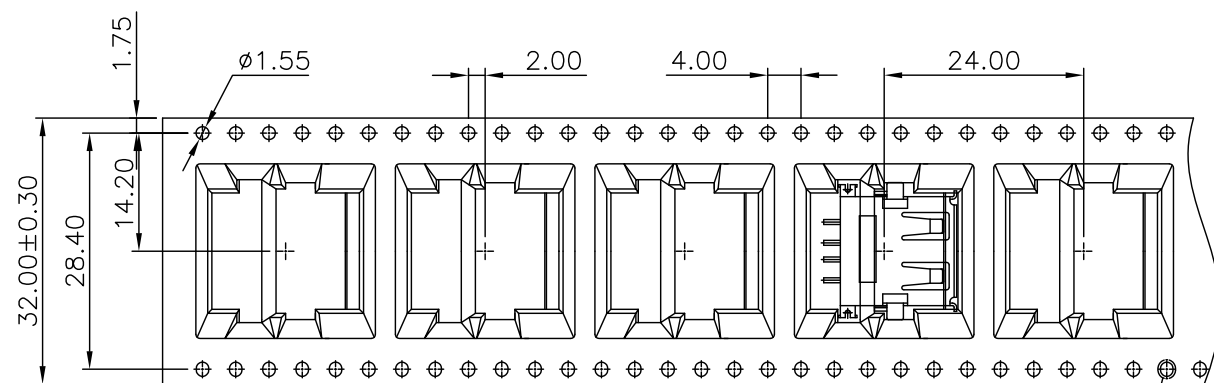
© COPYRIGHT 2009 BY TYCO ELECTRONICS CORPORATION. ALL RIGHTS RESERVED.

LOC DW

DIST

REVISIONS

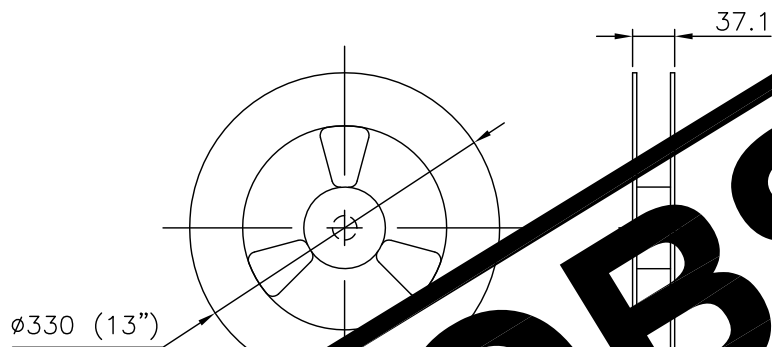
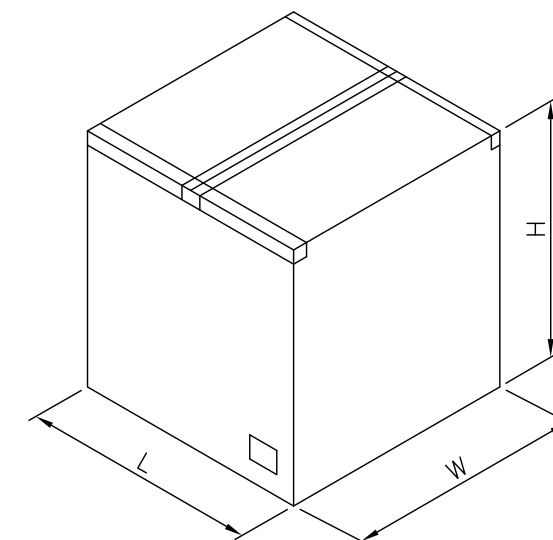
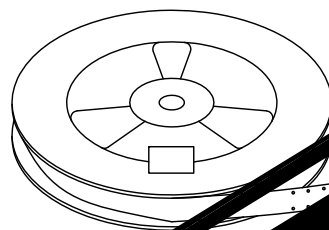
P	LTR	DESCRIPTION	DATE	DWN	APVD
		SEE SHEET 1.			



NOTES:

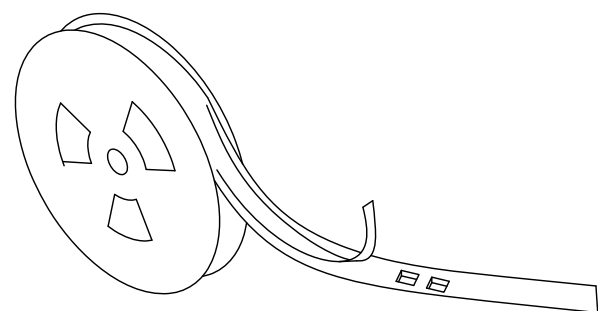
- MATERIAL:  
REEL: PS.  
EMBOSSED CARRIER: PS.  
COVER TAPE: PBT.
- DIMENSION :  
TAPE REEL:  $\phi 330\text{mm} \times 37.1\text{mm}$   
SHIPPING CARTON: L=350mm,W=350mm, H=350mm
- QUANTITY :  
PRIMARY PACKING: 350PCS/REEL  
SECONDARY PACKING: 9 REELS/CARTON.(3150 PCS)
- WEIGHT :  
NET WEIGHT: 4.85 kg .  
GROSS WEIGHT: 9.85 kg .
- REELING RESISTANCE: 20G TO 130G.
- REELING SPEED: 300MM/MIN.

**OBSOLETE**



SHIPPING CARTON  
9 TAPE-REEL/ CARTON

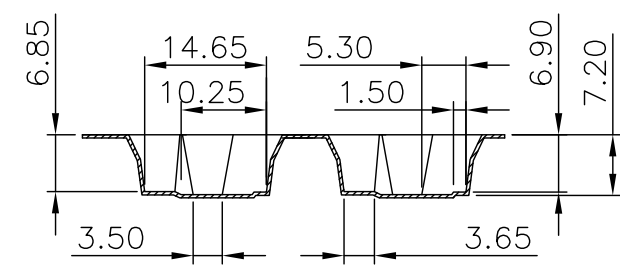
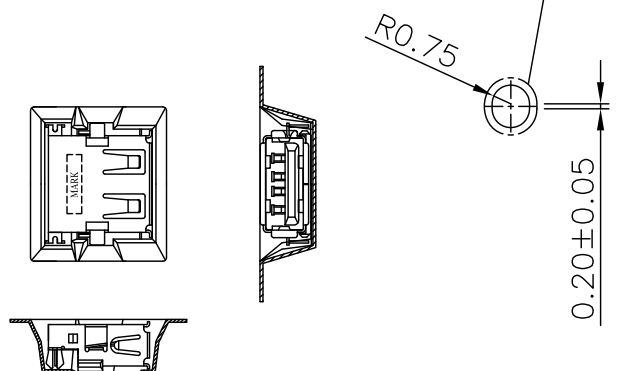
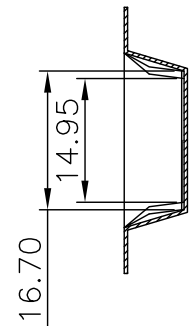
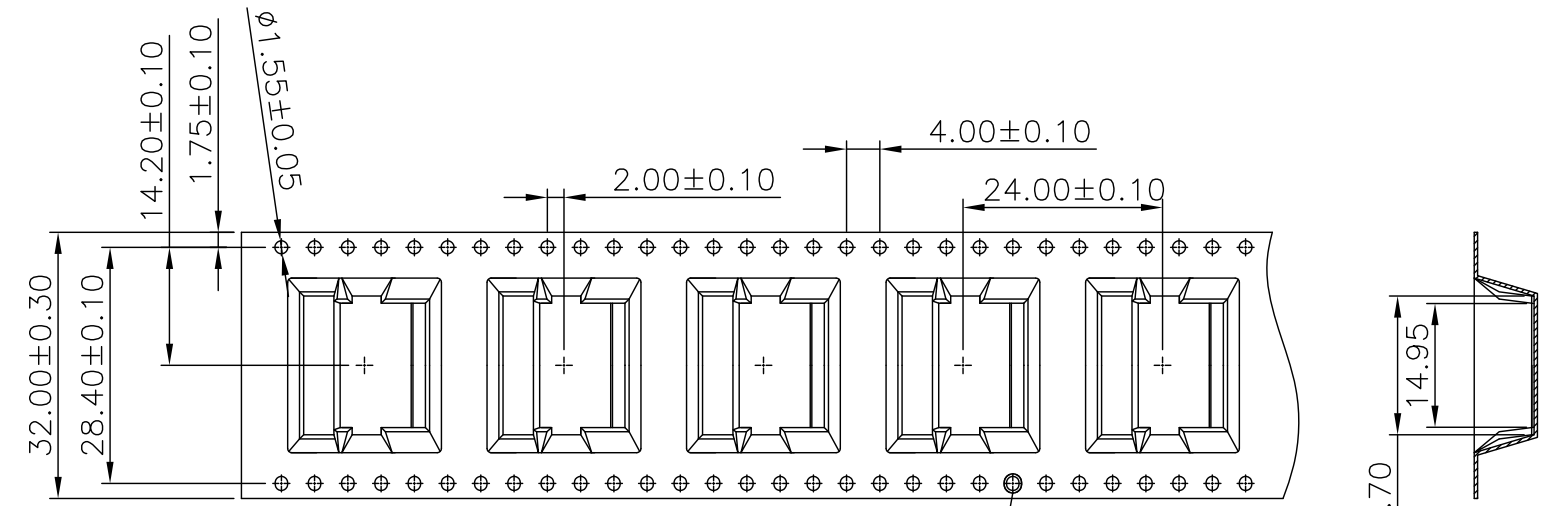
9.85 Kg	4.85 Kg	350	9	3150	3-1734081-1
GROSS WEIGHT	NET WEIGHT	PCS/REEL	REELS /CARTON	QUANTITY	PART NUMBER



THIS DRAWING IS A CONTROLLED DOCUMENT.		DWN		TE Connectivity NAME USB CONNECTOR, RECEPTACLE 4 POSITION, SERIES A	
DIMENSIONS: MM		CHK			
TOLERANCES UNLESS OTHERWISE SPECIFIED:		APVD			
0 PLC ± - 1 PLC ± - 2 PLC ± - 3 PLC ± - 4 PLC ± - ANGLES ± -		PRODUCT SPEC			
MATERIAL		FINISH		APPLICATION SPEC	
		WEIGHT		RESTRICTED TO	
		CUSTOMER DRAWING		A3 00779 C=1734081	
		SCALE		SHEET 14 of 19 REV E5	

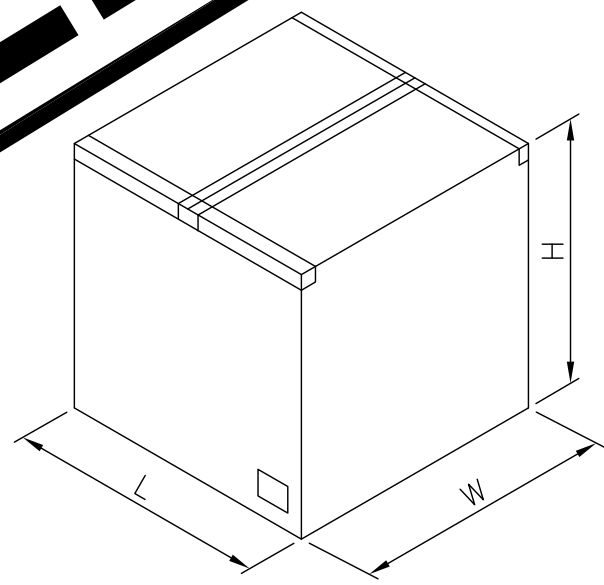
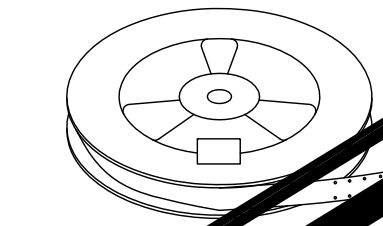
THIS DRAWING IS UNPUBLISHED. RELEASED FOR PUBLICATION AUG ,2006.  
 © COPYRIGHT 2009 BY TYCO ELECTRONICS CORPORATION. ALL RIGHTS RESERVED.

LOC	DIST	REVISIONS					
DW		P	LTR	DESCRIPTION	DATE	DWN	APVD
				SEE SHEET 1.			



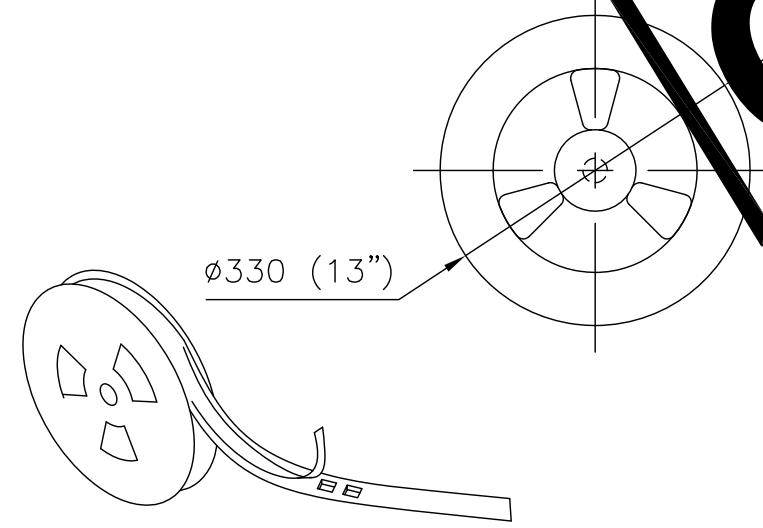
- NOTES:
- MATERIAL:  
 REEL: PS.  
 EMBOSSED CARRIER: PS.  
 COVER TAPE: PBT.
  - DIMENSION :  
 TAPE REEL:  $\phi 330\text{mm} \times 37.1\text{mm}$   
 SHIPPING CARTON: L=350mm,W=350mm, H=350mm
  - QUANTITY :  
 PRIMARY PACKING: 350PCS/REEL  
 SECONDARY PACKING: 9 REELS/CARTON(3,150PCS).
  - WEIGHT :  
 NET WEIGHT: 0.55 KG/REEL, 4.85 KG/CARTON.  
 GROSS WEIGHT: 1.09 KG/REEL, 9.85 KG/CARTON.
  - PEELING RESISTANCE: 20G TO 130G.  
 PEELING SPEED: 100MM/MIN.

**OBSOLETE**



SHIPPING CARTON

OBSOLETE	9.85 Kg	4.85 Kg	350	9	3150	7-1734081-1	2-1734081-3
	GROSS WEIGHT	NET WEIGHT	PCS/REEL	REELS /CARTON	QUANTITY	PART NUMBER	



THIS DRAWING IS A CONTROLLED DOCUMENT.		DWN	<b>TE</b> TE Connectivity			
DIMENSIONS: MM		CHK				
TOLERANCES UNLESS OTHERWISE SPECIFIED:		APVD	NAME			
0 PLC ± -		PRODUCT SPEC	USB CONNECTOR, RECEPTACLE 4 POSITION, SERIES A			
1 PLC ± -		APPLICATION SPEC				
2 PLC ± -		WEIGHT	SIZE	CAGE CODE	DRAWING NO	RESTRICTED TO
3 PLC ± -		CUSTOMER DRAWING	A3	00779	C=1734081	
4 PLC ± -		SCALE	SHEET		REV	
ANGLES ± -			15 of 19		E5	
FINISH						

THIS DRAWING IS UNPUBLISHED.

RELEASED FOR PUBLICATION

AUG ,2006.

© COPYRIGHT 2009 BY TYCO ELECTRONICS CORPORATION. ALL RIGHTS RESERVED.

LOC DW

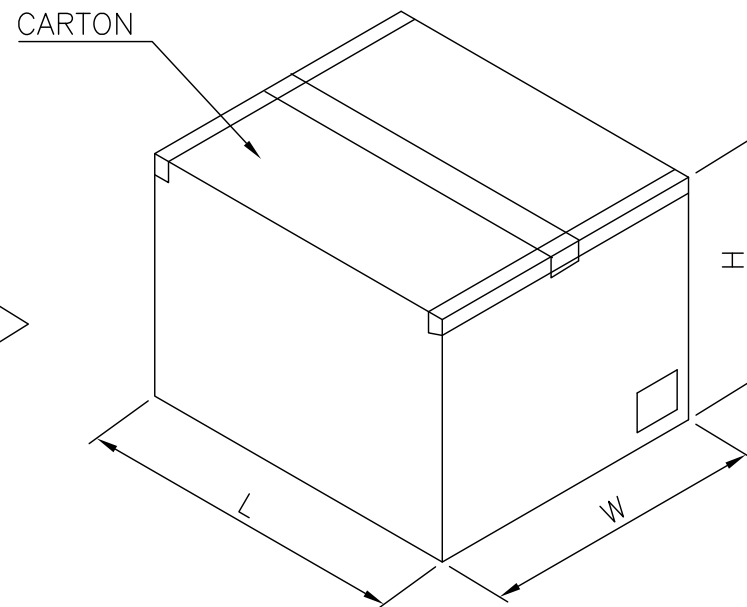
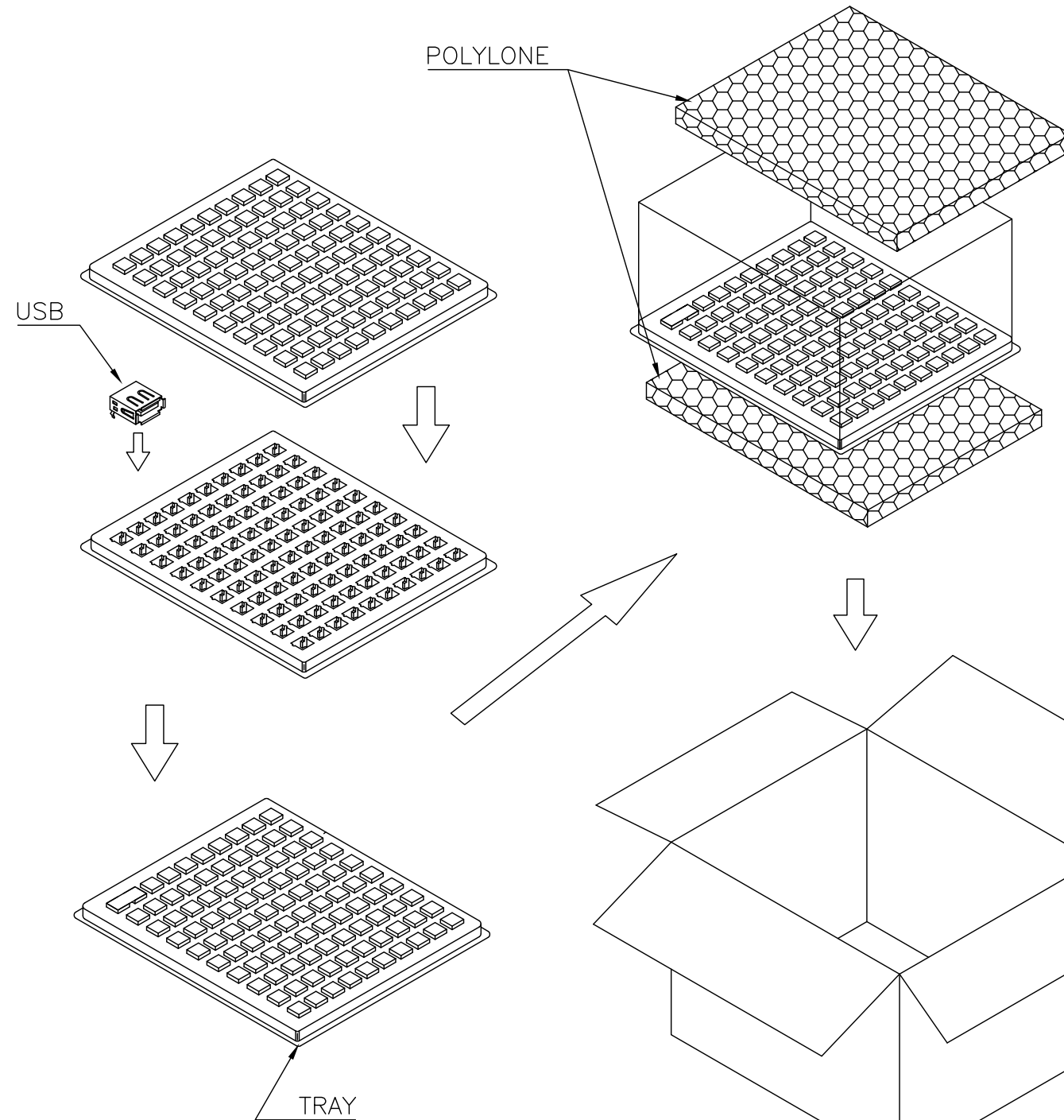
DIST

REVISIONS

P	LTR	DESCRIPTION	DATE	DWN	APVD
		SEE SHEET 1.			

NOTES:

- DIMENSION :  
 TRAY : L=295mm, W=252mm, H=14mm  
 SHIPPING CARTON: L=315mm, W=270mm, H=200mm  
 POLYSTYRENE : L=290mm, W=250mm, H=10mm
- QUANTITY :  
 PRIMARY PACKING: 100 PCS/TRAY  
 SECONDARY PACKING: 10 TRAYS/CARTON  
 (1,000PCS)
- WEIGHT :  
 NET WEIGHT: 2.03KG/CARTON.  
 GROSS WEIGHT: 3.10KG/CARTON.



3.10 Kg	2.03 Kg	100	10	1000	4-1734081-2	OBSOLETE
					4-1734081-1	OBSOLETE
					1-1734081-1	
					1734081-2	OBSOLETE
					1734081-1	
GROSS WEIGHT	NET WEIGHT	PCS/TRAY	TRAY /CARTON	QUANTITY	PART NUMBER	

THIS DRAWING IS A CONTROLLED DOCUMENT.

DIMENSIONS: MM	TOLERANCES UNLESS OTHERWISE SPECIFIED: 0 PLC ± - 1 PLC ± - 2 PLC ± - 3 PLC ± - 4 PLC ± - ANGLES ± -	DWN	TE Connectivity NAME USB CONNECTOR, RECEPTACLE 4 POSITION, SERIES A
MATERIAL	FINISH	CHK	
		APVD	
		PRODUCT SPEC	
		APPLICATION SPEC	SIZE
		WEIGHT	CAGE CODE
		CUSTOMER DRAWING	DRAWING NO
			RESTRICTED TO
			SCALE
			SHEET
			REV

A3 00779 C=1734081 16 of 19 E5



THIS DRAWING IS UNPUBLISHED.

RELEASED FOR PUBLICATION

AUG ,2006.

© COPYRIGHT 2009 BY TYCO ELECTRONICS CORPORATION. ALL RIGHTS RESERVED.

LOC

DIST

REVISIONS

DW

P

LTR

DESCRIPTION

DATE

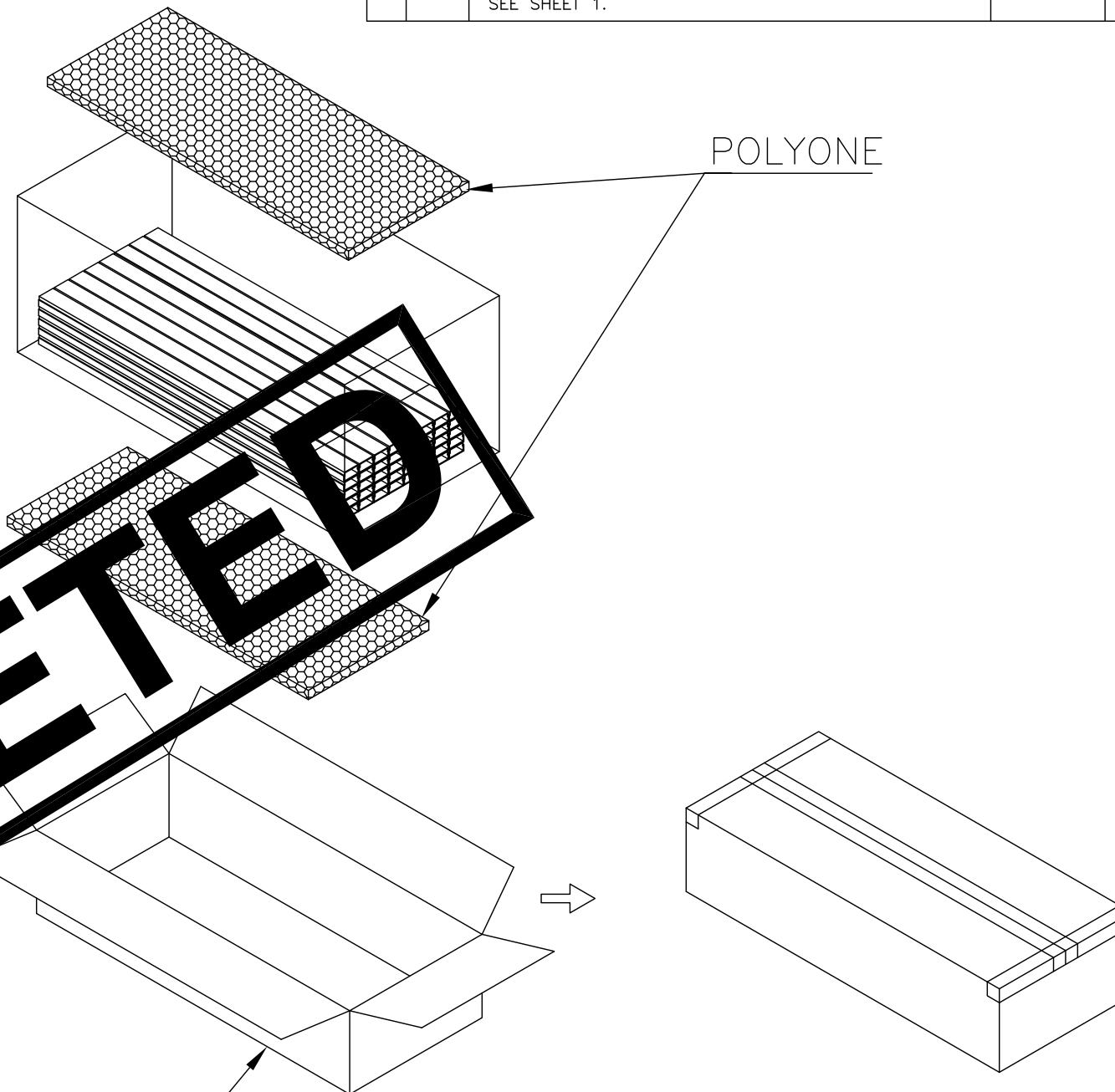
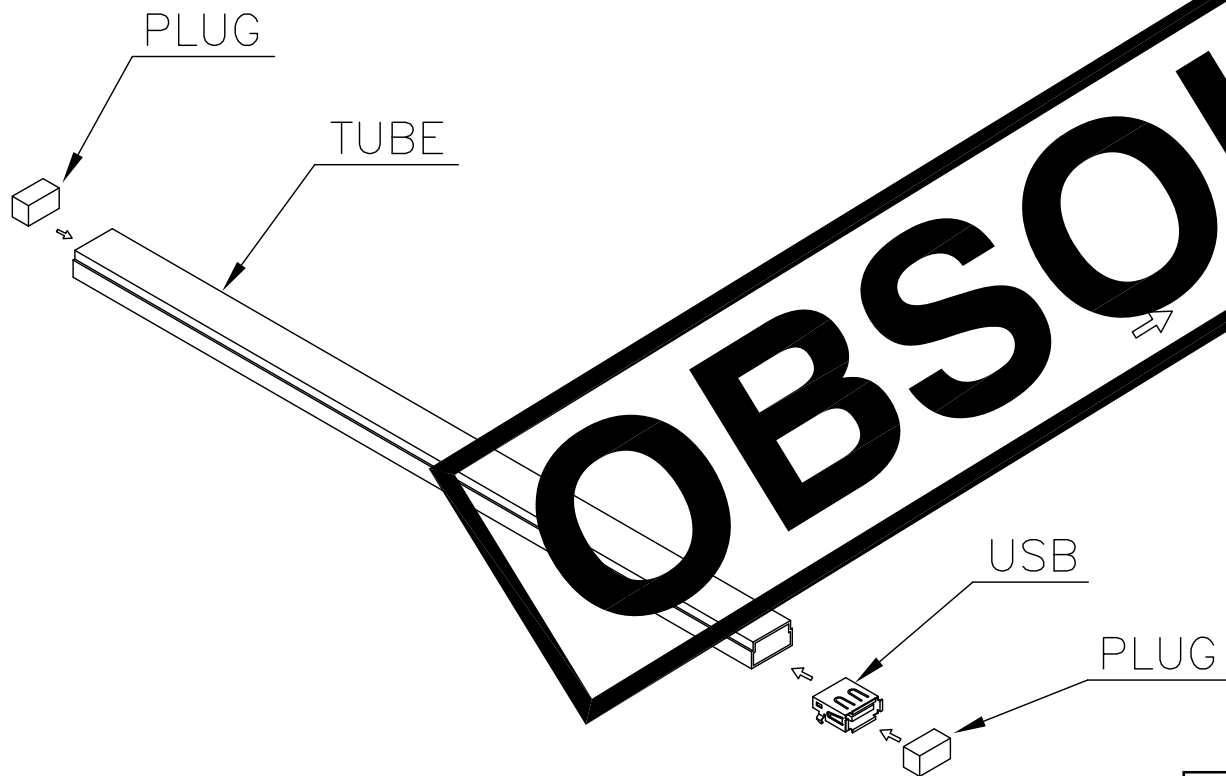
DWN

APVD

SEE SHEET 1.

NOTES:

- 1. MATERIAL:  
TRAY: PE.  
POLYLONE:POLYLONE  
SHIPPING CARTON: CORRUGATED FIBER.
- 2. DIMENSION :  
TUBE : L=370mm, W=18.7mm, H=10.1mm  
SHIPPING CARTON : L=390mm, W=165mm, H=90mm
- 3. QUANTITY :  
25 PCS/TUBE  
40 TUBES/INNER BOX(1,000PCS)
- 4. WEIGHT :  
NET WEIGHT : 1.54 KG  
GROSS WEIGHT : 2.45 KG



OBSOLETE	2.45 Kg	1.54 Kg	25	40	1000	2-1734081-2
						2-1734081-1
	GROSS WEIGHT	NET WEIGHT	PCS/TUBE	TUBES /CARTON	QUANTITY	PART NUMBER

THIS DRAWING IS A CONTROLLED DOCUMENT.		DWN	<b>STE</b> TE Connectivity			
DIMENSIONS: MM		CHK				
TOLERANCES UNLESS OTHERWISE SPECIFIED:		APVD	NAME			
0 PLC ± -		PRODUCT SPEC	USB CONNECTOR, RECEPTACLE 4 POSITION, SERIES A			
1 PLC ± -		APPLICATION SPEC	SIZE	CAGE CODE	DRAWING NO	RESTRICTED TO
2 PLC ± -		WEIGHT	A3	00779	C=1734081	-
3 PLC ± -		CUSTOMER DRAWING	SCALE	SHEET	REV	
4 PLC ± -			-	17 of 19	E5	
ANGLES ± -						
MATERIAL						
FINISH						

THIS DRAWING IS UNPUBLISHED.

RELEASED FOR PUBLICATION

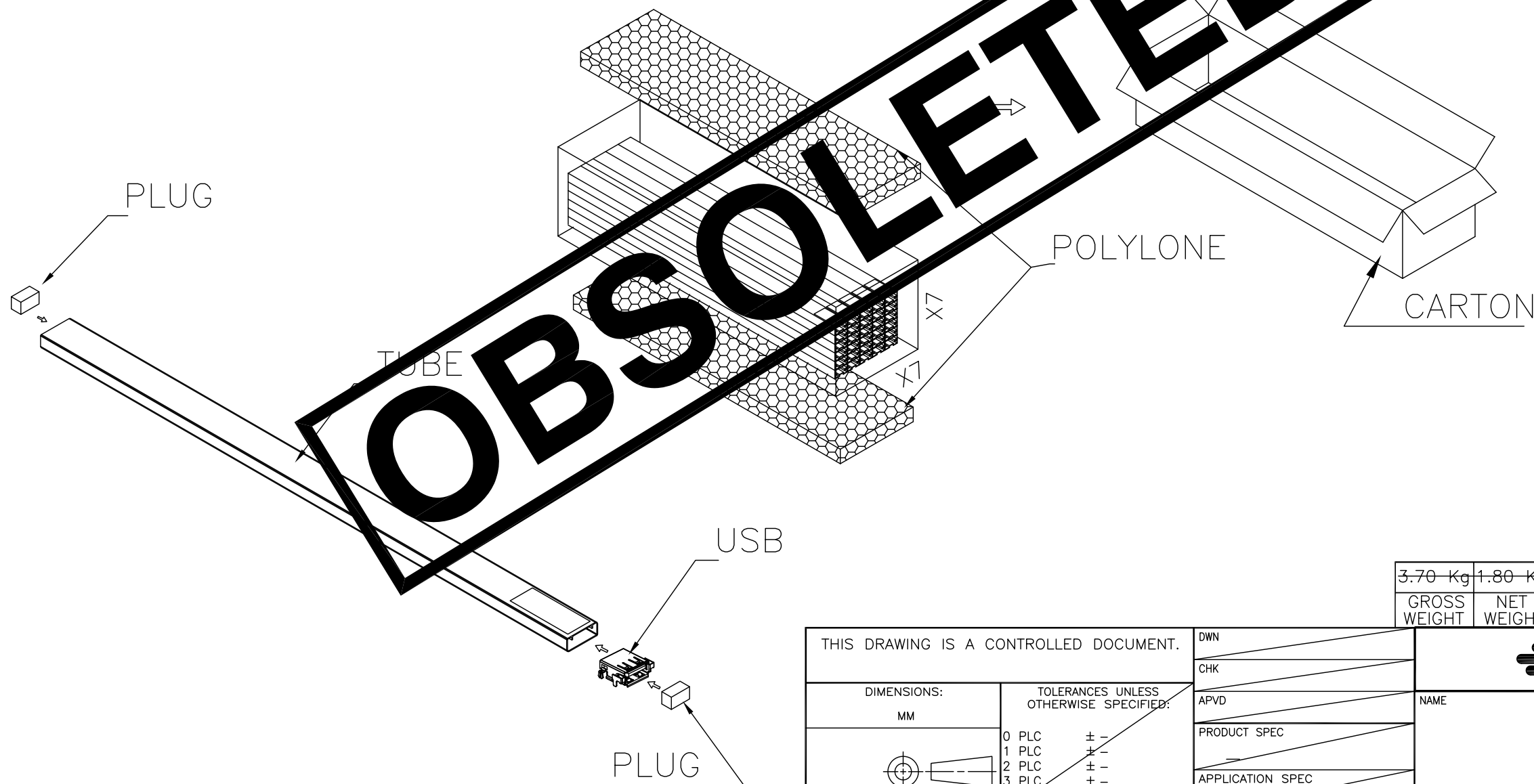
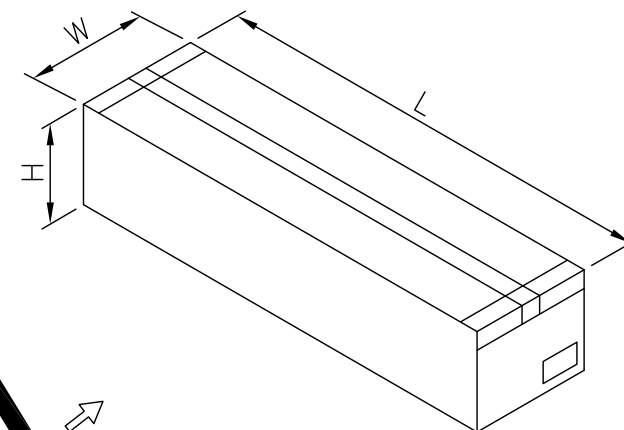
AUG ,2006.

© COPYRIGHT 2009 BY TYCO ELECTRONICS CORPORATION. ALL RIGHTS RESERVED.

LOC	DIST	REVISIONS					
DW		P	LTR	DESCRIPTION	DATE	DWN	APVD
				SEE SHEET 1.			

NOTE:

- MATERIAL:  
TRAY: PE.  
POLYLONE:POLYLONE  
SHIPPING CARTON: CORRUGATED FIBER.
- DIMENSION :  
TUBE : L=370mm, W=21.8mm, H=8.6mm  
SHIPPING CARTON : L=390mm, W=165mm, H=90mm
- QUANTITY :  
25 PCS/TUBE  
49 TUBES/INNER BOX(1,225PCS)
- WEIGHT :  
NET WEIGHT : 1.80 KG  
GROSS WEIGHT : 3.70 KG



3.70 Kg	1.80 Kg	25	49	1225	6-1734081-1
GROSS WEIGHT	NET WEIGHT	PCS/TUBE	TUBES /CARTON	QUANTITY	PART NUMBER

THIS DRAWING IS A CONTROLLED DOCUMENT.		DWN	<b>STE</b> TE Connectivity		
DIMENSIONS: MM		CHK			
TOLERANCES UNLESS OTHERWISE SPECIFIED:		APVD	NAME		
0 PLC ± -		PRODUCT SPEC	USB CONNECTOR, RECEPTACLE 4 POSITION, SERIES A		
1 PLC ± -		APPLICATION SPEC	SIZE	CAGE CODE	DRAWING NO
2 PLC ± -		WEIGHT	A3	00779	C=1734081
3 PLC ± -		CUSTOMER DRAWING	RESTRICTED TO		
4 PLC ± -			SCALE		SHEET
ANGLES ± -			-		18 of 19
MATERIAL			REV		E5
FINISH					

THIS DRAWING IS UNPUBLISHED.

RELEASED FOR PUBLICATION

AUG ,2006.

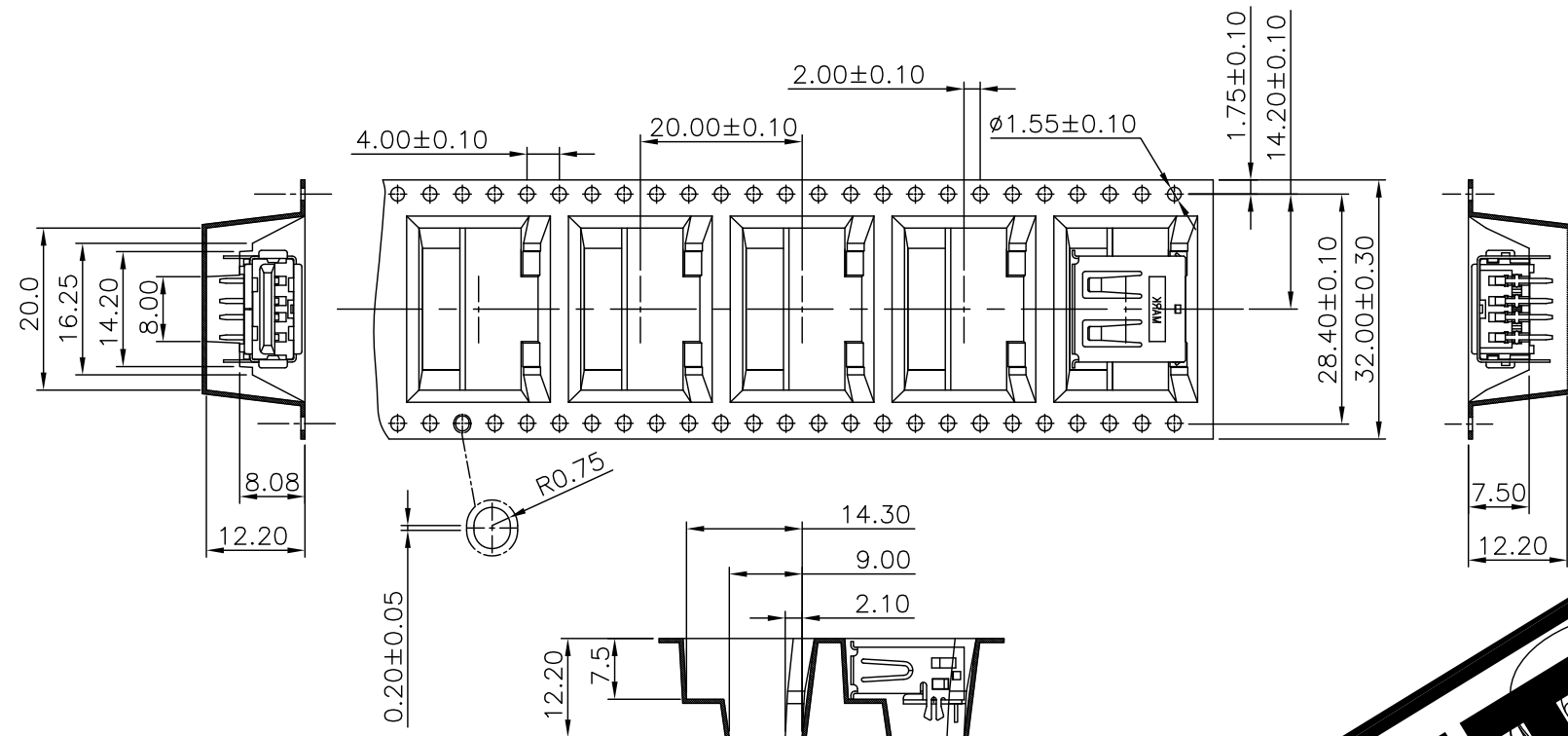
© COPYRIGHT 2009 BY TYCO ELECTRONICS CORPORATION. ALL RIGHTS RESERVED.

LOC DW

DIST

REVISIONS

P	LTR	DESCRIPTION	DATE	DWN	APVD
		SEE SHEET 1.			



NOTES:

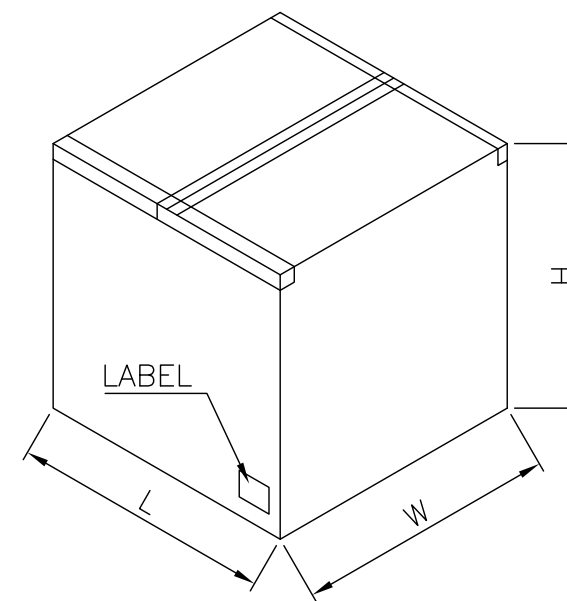
- MATERIAL:  
REEL: PS.  
EMBOSSED CARRIER: PS.  
COVER TAPE: PBT.
- DIMENSION:  
SHIPPING CARTON: L=350mm,W=350mm, H=350mm
- PEELING RESISTANCE: 20G TO 130G.  
PEELING SPEED: 300MM/MIN.

PULL OUT DIRECTION

**OBSOLETE**

LABEL

SHIPPING CARTON



9.50 Kg	4.52 Kg	250	9	2250	1 1734081 5
GROSS WEIGHT	NET WEIGHT	PCS/REEL	REELS /CARTON	QUANTITY	PART NUMBER

THIS DRAWING IS A CONTROLLED DOCUMENT.		DWN	<b>STE</b> TE Connectivity		
DIMENSIONS: MM		CHK			
TOLERANCES UNLESS OTHERWISE SPECIFIED:		APVD	NAME		
0 PLC ± -		PRODUCT SPEC	USB CONNECTOR, RECEPTACLE 4 POSITION, SERIES A		
1 PLC ± -		APPLICATION SPEC	SIZE	CAGE CODE	DRAWING NO
2 PLC ± -		WEIGHT	A3	00779	C=1734081
3 PLC ± -		CUSTOMER DRAWING	RESTRICTED TO		
4 PLC ± -		SCALE	SHEET 19 of 19		
ANGLES ± -		SHEET	REV E5		
FINISH		REV	E5		

