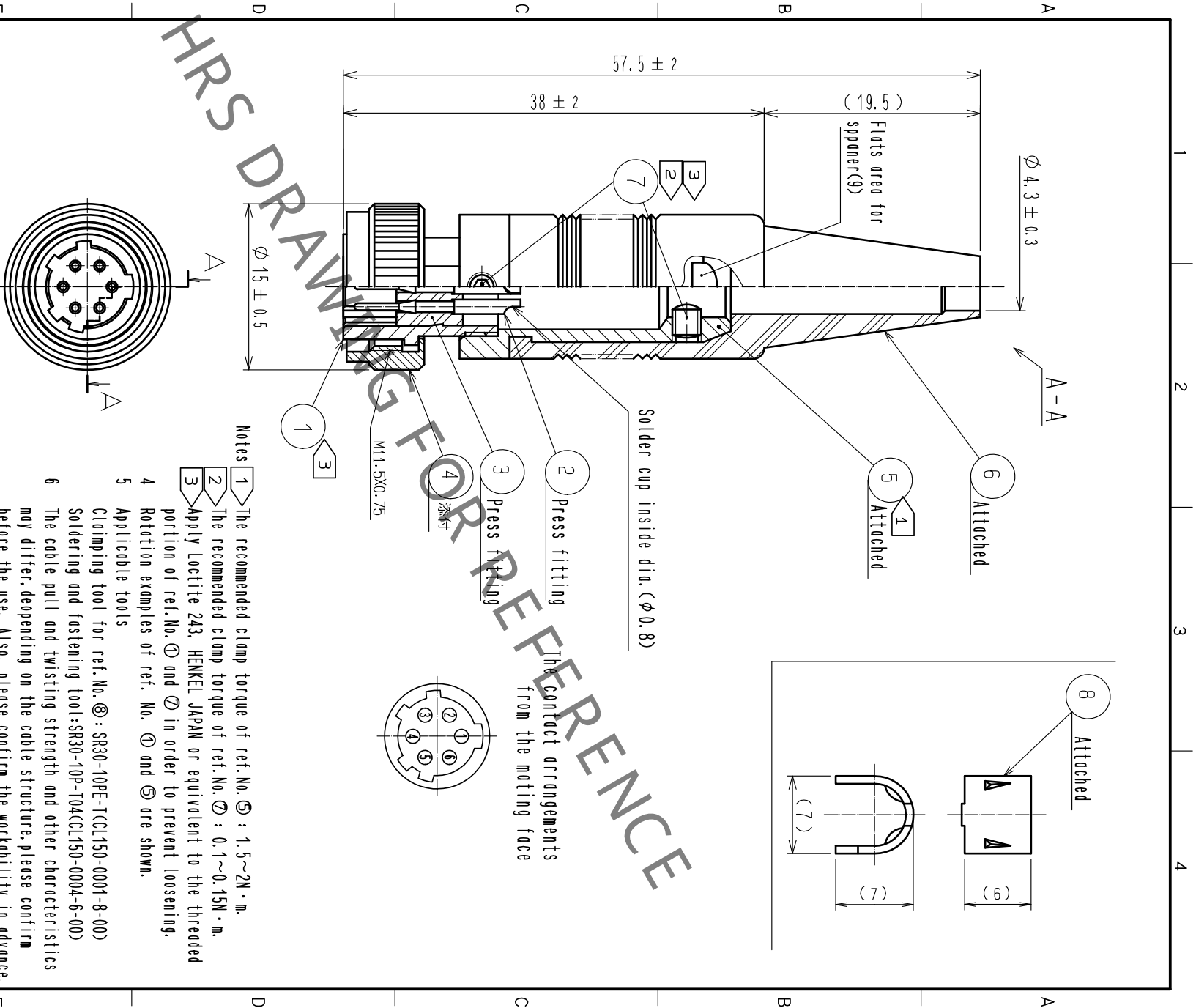


In case of consideration for using Automotive equipment / device which demand high reliability, kindly contact our sales window correspondents.



Notes 1 The recommended clamp torque of ref.No.⑤ : 1.5~2N·m.

2 The recommended clamp torque of ref.No.⑦ : 0.1~0.15N·m.

3 Apply Loctite 243, HENKEL JAPAN or equivalent to the threaded portion of ref.No.① and ⑦ in order to prevent loosening.

4 Rotation examples of ref. No. ① and ⑤ are shown.

5 Applicable tools

Clamping tool for ref.No.③ : SR30-10PE-TC(L150-0001-8-00)

Soldering and fastening tool:SR30-10P-104(CL150-0004-6-00)

6 The cable pull and twisting strength and other characteristics may differ depending on the cable structure, please confirm before the use. Also, please confirm the workability in advance, as it may be tight when passing the cable through the

part No. ② bushing.

4	Brass	Chrome plating	8	Brass	
3	Polycetal	(White)	7	Steel	Nickel plating JIS B 1177
2	Brass	Surface:gold plating 0.2μm min. Under :nickel plating 3μm min	6	Chloroprene rubber	(Black) W2.6X0.45X2
1	Zinc alloy	Nickel plating	5	Brass	Nickel plating
MATERIAL		FINISH . REMARKS	MATERIAL		FINISH . REMARKS
UNITS	mm	SCALE	COUNT	DESCRIPTION OF REVISIONS	DESIGNED
		2 : 1			CHECKED
					DATE

HRS
HIROSE
ELECTRIC
CO., LTD.

APPROVED : TP. KOMATSU
CHECKED : HY. KOBAYASHI
DESIGNED : HY. KITSHI
DRAWN : KR. SUZUKI

20221201
20221201
20221201
20221129

DRAWING NO. EDC-009239-32-00
PART NO. SR30-10PQ-6P(32)
CODE NO. CL0103-0313-3-32