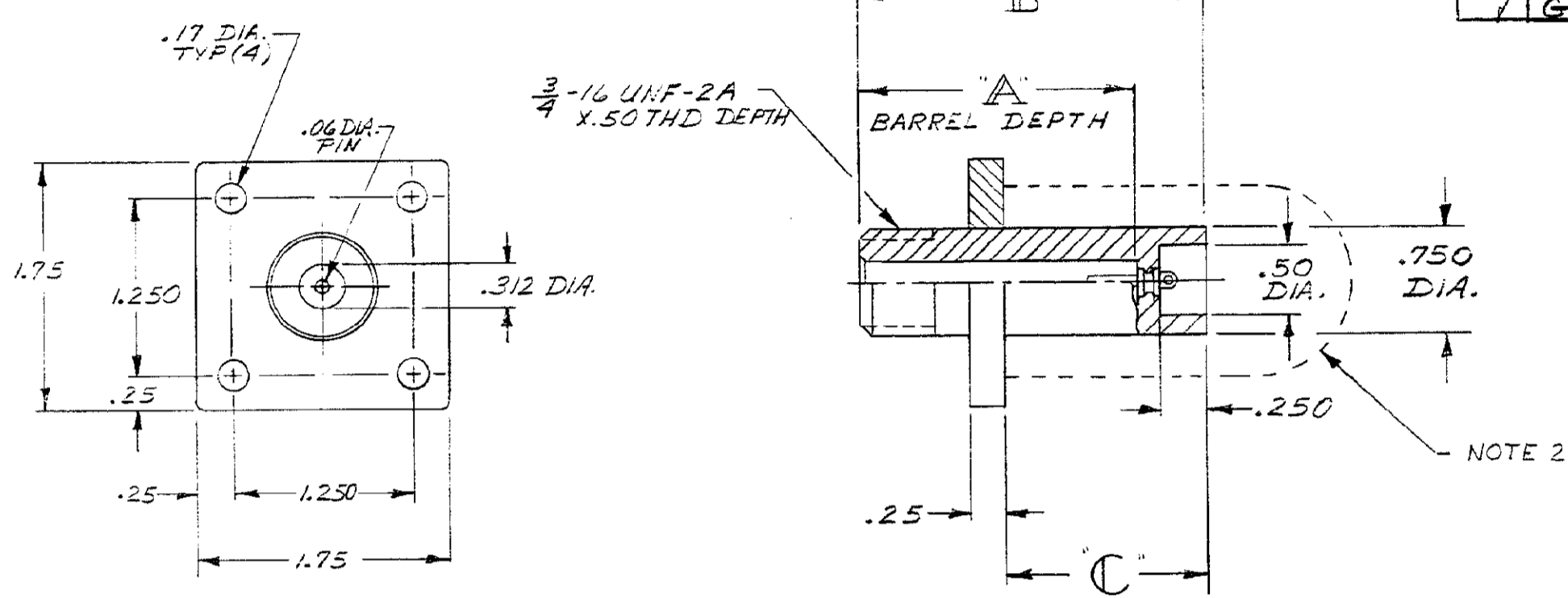


MADE IN AMERICAN PROJECTION
 BY AMP INCORPORATED. ALL RIGHTS RESERVED. AMP PRODUCTS COVERED BY PATENTS AND/OR PATENTS PENDING.

THIS DRAWING IS THE PROPERTY OF AMP INCORPORATED. NO PARTS TO BE REPRODUCED OR COPIED IN ANY MANNER WITHOUT THE WRITTEN PERMISSION OF AMP.

REVISIONS				
ZONE	LTR	DESCRIPTION	DATE	APPROVED
A		REVISED & REDRAWN	4-14-69	KL
B		ADDED DASH 11&12	12-19-69	KL
C		PIN WAS 849439	6-5-70	Ken K.
D		ADDED DASH 13&14	9-2-71	Ken K.
E		OBSOLETE -1	11-18-86	RB
F		OBSOLETE ECN OF 11536	1-89	T.W.
G		REACTIVATED -1 PERL DF-4477	4/3/79	Ken Ealy



PART NO	"A"	"B"	"C"	TERM. CONTACT PLATING	
				TIN	GOLD
840579-1	2.00	2.38	1.38	X	
840579-2	2.00	2.38	1.38		X
840579-3	2.00	2.38	1.50	X	
840579-4	2.00	2.38	1.50		X
840579-5	1.81	2.19	1.50	X	
840579-6	1.81	2.19	1.50		X
840579-7	2.00	2.38	1.62	X	X
840579-8	2.00	2.38	1.62		X
840579-9	2.00	2.38	1.25	X	
1-840579-0	2.00	2.38	1.25		X
1-840579-1	1.81	2.19	1.00	X	
1-840579-2	1.81	2.19	1.00		X
1-840579-3	2.00	2.38	1.19	X	
1-840579-4	2.00	2.38	1.19		X

NOTE:
 1. RECEPTACLE TO MATE WITH AMP LGH-3 LEAD ASSEMBLY. AVAILABLE SEPARATELY. WHEN ORDERING LEAD ASSEMBLY WITH RECEPTACLE, MUST SPECIFY GROUND PER Jumper RECOMMENDATIONS.
 2. CUSTOMER MUST PROTECT THE RECEPTACLES BACK END AGAINST ARC OVER & BREAKDOWN.

PRINT DIST LGH-3 OF 50 DF

QTY REQD	QTY REQD	ITEM NO.	DWG SIZE	PART OR IDENTIFYING NO.	NOMENCLATURE OR DESCRIPTION	SYMBOL
-2	-1					
UNLESS OTHERWISE SPECIFIED: DIMENSIONS ARE IN INCHES TOLERANCES .00 ± .04 ANGLES = J .000 ± .015					PARTS LIST	
MATERIAL: MOLDED GLASS EPOXY (BLACK)					AMP INCORPORATED CAPITRON DIVISION ELIZABETHTOWN, PENNSYLVANIA	
FINISH:					NAME FLANGED RECEPTACLE (FOR BULKHEAD APPLICATION) LGH-3	
NEXT ASSY					SIZE	CODE IDENT NO. NUMBER
FINAL ASSY					C	89110 840579
NEXT ASSY					SCALE	WT
USED ON					SHEET	
APPLICATION					CUSTOMER DRAWING	