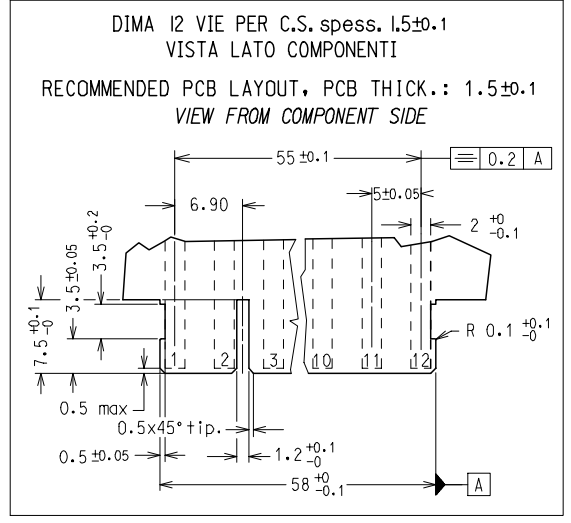
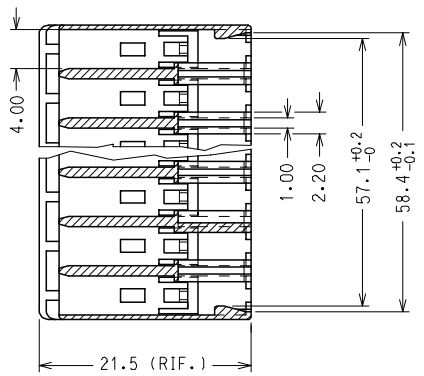
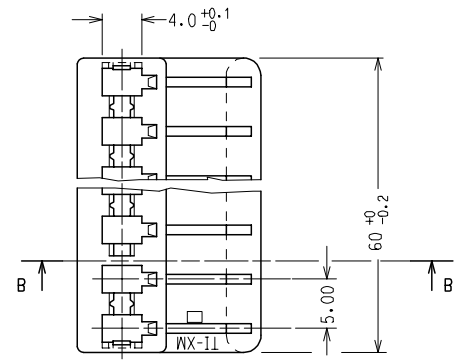
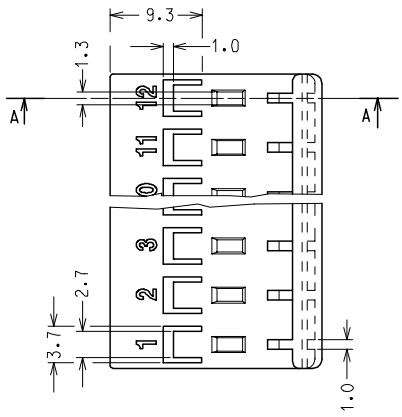
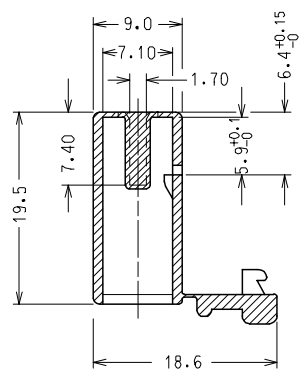
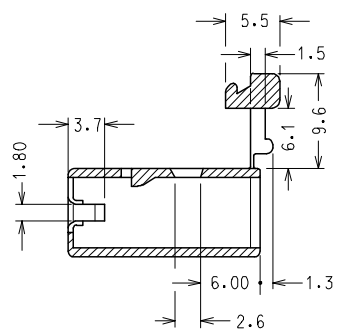


10 9 8 7 6 5 4 3 2 1

SECTION A-A

SECTION B-B



CODICE	P/N	COLORE	MATERIALE
94529-9112		NATURALE (NATURAL)	PA 66 UL94 V2 GWT 850°C
94529-9212		NERO (BLACK)	
94529-7112		NATURALE (NATURAL)	PA 66 UL94 V0
94529-4112		NATURALE (NATURAL)	NYLON 6.6 GWT 750 °C sec. IEC 60335-1
94529-4212		NERO (BLACK)	TEST METHOD IEC 60695-2-11

NOTA: LE DIMENSIONI VANNO MISURATE CON CORPI STABILIZZATI SECONDO NG 2301. (AUMENTO IN PESO DEL 2.7 %)

NOTE: PARTS SHALL BE DIMENSIONALLY CHECKED AFTER ATTAINING EQUILIBRIUM CONDITIONS E.G. 2% INCREASE IN WEIGHT FOR HUMIDITY ABSORPTION FROM DRY STATUS.

CARATTERISTICHE PRODOTTO SECONDO PS-94529
PRODUCT CHARACTERISTICS ACCORDING TO PS-94529 E

CONFEZIONE: 1800 pz. IN SCATOLA
PACKAGING: 1800 pcs IN CARTON BOX

SPQ: 1800 pz.

Descr. Std: HSG FOR FORK TERMINAL 12 CKT

EC NO: Z2006-0107 DRWN: FGOTTARDI 005/12/20 CHKD: RSANDANI 005/12/20 APPR: GZUINI 2006/01/09	QUALITY SYMBOLS	GENERAL TOLERANCES (UNLESS SPECIFIED)	SCALE 2:1	DESIGN UNITS METRIC	FIRST ANGLE PROJECTION	REVISE ON CAD ONLY
	▲ -0 ▽ -0	mm INCH 4 PLACES ± --- ± --- 3 PLACES ± --- ± --- 2 PLACES ± 0.10 ± --- 1 PLACE ± 0.2 ± --- ANGULAR ± 2 °	DIMENSION STYLE MM ONLY DRAWN BY DATE FGOTTARDI 2000/01/25 CHECKED BY DATE MTESTAGU 2000/01/25 APPROVED BY DATE RMARTUCC 2000/01/25	TITLE 12 CKT HOUSING FOR STRAIGHT FORK TERMINAL MOLEX MOLEX INCORPORATED MATERIAL NO. SEE TABLE DOCUMENT NO. SD-94529-012 SHEET NO. 1 OF 1		
B4	REV	DRAFT WHERE APPLICABLE MUST REMAIN WITHIN DIMENSIONS	THIS DRAWING CONTAINS INFORMATION THAT IS PROPRIETARY TO MOLEX INCORPORATED AND SHOULD NOT BE USED WITHOUT WRITTEN PERMISSION			

9 8 7 6 5 4 3 2 1