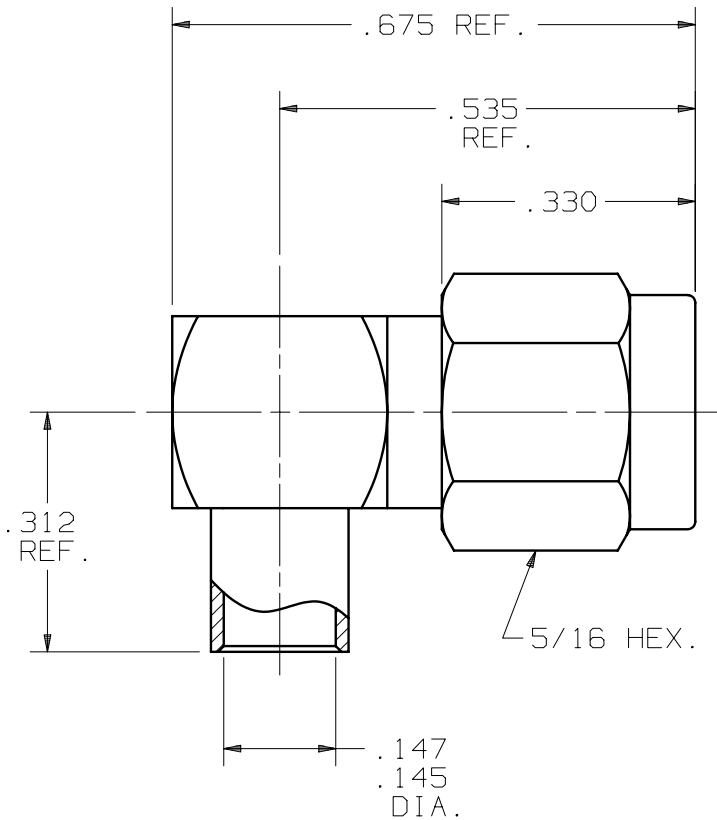


PRODUCT DATA DRAWING

CAD GENERATED DRAWING	DCN CONTROLLED DOCUMENT	DWG. NO. 2912-6001
-----------------------------	-------------------------------	---------------------------



MATERIAL:

BODY, FERRULE,
COUPLING NUT &
CAP: STAINLESS STEEL PER AMS-5640,
UNS S30300, TYPE I.

CONTACT: BRASS PER ASTM B 16, ALLOY
UNS C36000, H02.

LOCK RING: BERYLLIUM COPPER PER ASTM B 196,
ALLOY C17300, COND. TD04.

INSULATOR: TEFLON ASTM D 1710.

GASKET: SILICONE RUBBER PER A-A-59588.

FINISH:

BODY, FERRULE
& CAP: GOLD PER ASTM B 488, TYPE II,
GRADE C, CLASS .76 OVER NICKEL
PER SAE-AMS-QQ-N-290, CLASS 1,
.000100" MIN.

COUPLING NUT: GOLD PER ASTM B 488, TYPE I,
GRADE C, CLASS .51 OVER NICKEL
PER SAE-AMS-QQ-N-290, CLASS 1,
.000020" MIN.

CONTACT: GOLD PER ASTM B 488, TYPE II,
GRADE C, CLASS 1.27 OVER NICKEL
PER SAE-AMS-QQ-N-290, CLASS 1,
.000100" MIN.

IMPEDANCE: 50 OHMS
FREQ. RANGE: DC-12.4 GHz
D.W.V.: 1500 VRMS
INSUL. RES.: 5000 MEGOHMS MIN.

SYM.	DESCRIPTION	DATE	APPR.	UNLESS OTHERWISE SPECIFIED: 1) ALL DIMENSIONS ARE AFTER PLATING. 2) BREAK CORNERS & EDGES .005 R. MAX. 3) CHAM. 1st & LAST THDS. 4) SURFACE ROUGHNESS 63 / MIL-STD-10. 5) DIAS. ON COMMON CENTERS TO BE CONCENTRIC WITHIN .005 T.I.R. 6) REMOVE ALL BURRS.	DIMENSIONS ARE IN INCHES			SV Microwave, Inc. 2400 Centrepark West Drive, Suite 100 West Palm Beach, FL 33409 TITLE: SMA, PLUG, RIGHT ANGLE SOLDER ON FOR .141 SEMI-RIGID DWG. NO. 2912-6001
					DECIMALS	FRACTIONAL	ANGULAR	
B	REV. DCN F10201	10/85	ND		.X ±.030	±1/64	X° ±1°0'	
C	REV. DCN 23364	04/97	JM		.XX ±.015		X°X' ±15'	
D	REV. DCN 31477	05/04	STW		.XXX ±.005			
					MATERIAL:	SEE ABOVE		
				FINISH:	SEE ABOVE	AREA: N/A		
				SIZE	CAGE NO.	SCALE		
				A	95077	5X		