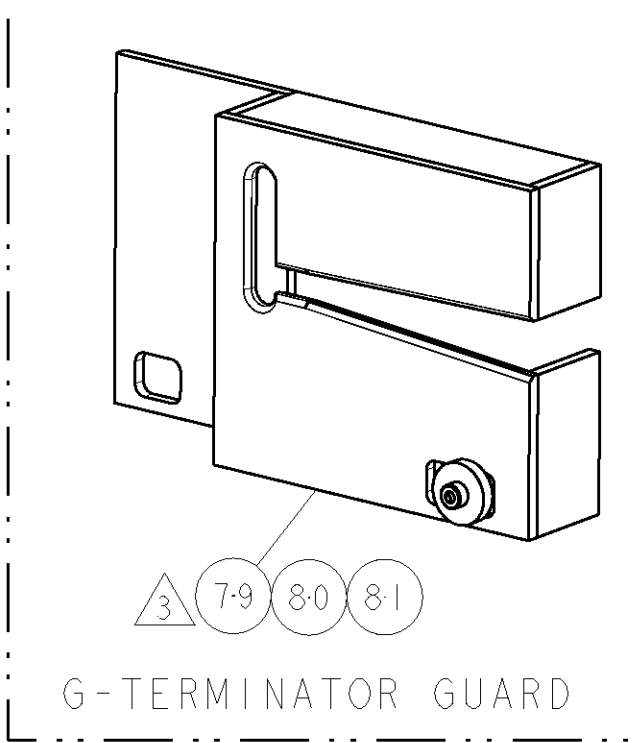


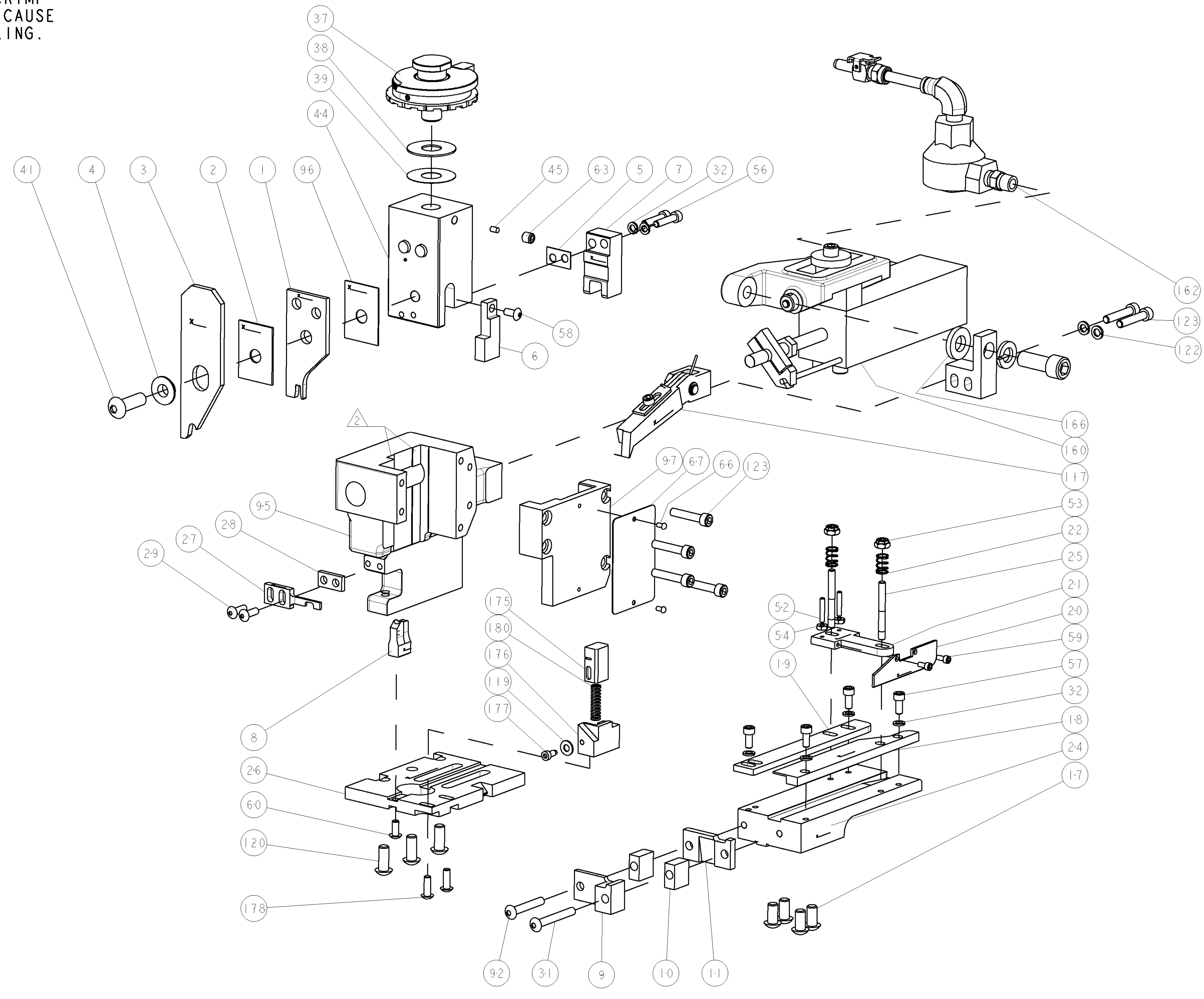
PART NUMBER	REV	FIRST USED	POWER UNIT	FEED TYPE
1855542-1	A	354500-1	BENCH MODEL G	AIR FEED
7-1855542-7	A	-	SPARE PARTS	-

- 1 RECOMMENDED SPARE PARTS
  - 2 GREASE LIGHTLY
  - 3 GUARD MUST BE IN PLACE WHEN OPERATING APPLICATOR IN THE G TERMINATING UNIT.
4. THIS APPLICATOR IS DESIGNED TO RUN ON THE G TERMINATOR UNIT ONLY.
5. TERMINAL LUBRICANT IS REQUIRED.

**\*WARNING:**  
 ON INSTALLATION, SET WIRE DISC TO LARGEST WIRE SIZE SETTING. USE OF SETTINGS BELOW MIN REQUIRED CRIMP HEIGHT SETTING WILL CAUSE DAMAGE TO CRIMP TOOLING.



TE PN		LEAR PN		G&H (LEAR) TERMINAL - TE CRIMP SPECS		
2113019		26436	212.011			
				CRIMP HEIGHT	WIRE SIZE	REF SETTING*
				2.69±0.05mm [.106±.002]	4mm2	B1
				2.59±0.05mm [.102±.002]	3.5mm2	C0
				2.48±0.05mm [.098±.002]	3mm2	C7
				2.37±0.05mm [.093±.002]	2.5mm2	D8
		CRIMP	SIZE	TYPE	RANGE	
			3.81mm [.150]	F	2.50-4.00mm2	
		WIRE				
		INSUL	5.33mm [.210]	O	Ø4.32mm MAX	
WIRE STRIP LENGTH	TERM APPL SPEC	FEED	APPL INSTRUCTIONS	SET UP GAGE		
5.05-5.43	NONE	27.36mm	408-8039	-		



LOC	DIST	REVISIONS			
A	66	REV	DATE	BY	APPV
		A	RELEASED	06JAN2010	LG TE

ITEM NO	QTY	U/M	PART NO	DESCRIPTION	ITEM NO
-	1	-	3-22280-3	SPRING, COMPRESSION	180
-	2	-	2-21002-2	SCR, BTN SKT HD CAP 8-32 X .500	178
-	1	-	1-690461-9	STOP, SHEAR	177
-	1	-	1633851-1	SHEAR HOLDER, REAR	176
-	1	-	2-690463-2	FLOATING SHEAR, REAR	175
-	1	-	371178	WASHER	166
-	1	-	692655-7	AIR FEED VALVE ASSEMBLY	162
-	1	-	460277-4	AIR FEED ASSY	160
-	6	-	3-21000-9	SCR, SKT HD CAP 10-32 X 1.000	123
-	2	-	21024-5	WASHER, SPRG LOCK, REG NO 10	122
-	3	-	2-22733-8	SCR, BHSC, SELF-LOCKING, 1/4-20 X .625	120
-	1	-	21055-6	WASHER, FLAT, REG NO 8	119
-	1	-	3-460680-2	FEED FINGER ASSEMBLY	117
-	1	-	458268-1	CAP, RAM	97
-	1	-	455888-5	SPACER, CRIMPER	96
-	1	-	458267-1	HOUSING, APPLICATOR	95
-	1	-	9-21002-0	SCR, BTN SKT HD CAP 10-32 X 1.25	92
-	1	-	992256-1	WASHER, FLAT	81
-	1	-	9-18023-4	SCR, SKT HD CAP M3 X 35.0	80
-	1	-	1633852-1	INSERT, GUARD	79
-	1	-	217238-1	GENERAL INSTRUCTION PKG	72
-	1	-	4088039	EF APPL INST 408-8039	71
-	1	-	461264-5	PLATE, IDENTIFICATION	67
-	2	-	21017-2	SCREW, DRIVE	66
-	1	-	21009-2	SCR, SET, SELF LOCKING 1/4-20 X .250	63
-	1	-	22733-8	SCR, BHSC, SELF-LOCKING, 8-32 X .375	60
-	2	-	1-21000-3	SCR, SKT HD CAP 4-40 X .250	59
-	1	-	2-21002-1	SCR, BTN SKT HD CAP 8-32 X .375	58
-	4	-	2-21000-6	SCR, SKT HD CAP 8-32 X .375	57
-	2	-	2-21000-9	SCR, SKT HD CAP 8-32 X .750	56
-	2	-	21018-4	NUT, HEX, REG 4-40	54
-	2	-	21022-2	NUT, HEX, SELF-LOCKING, THIN, 8-32	53
-	2	-	2-21006-6	SCR, SET, CUP POINT 4-40 X .625	52
-	1	-	690191-1	PLUG, NYLON	45
-	1	-	1633848-1	RAM, DUAL	44
-	1	-	7-21002-9	SCR, BTN SKT HD CAP 5/16-24 X 1.00	41
-	1	-	690125-1	SHIM SUB-ASSY	39
-	1	-	469367-7	SHIM	38
-	1	-	879103-2	FINE ADJUST HEAD ASSEMBLY	37
-	6	-	21024-4	WASHER, SPRG LOCK, REG NO 8	32
-	1	-	1-24921-8	SCR, BTN SKT HD CAP 10-32 X 1.50	31
-	2	-	2-21002-2	SCR, BTN SKT HD CAP 8-32 X .500	29
-	1	-	2-690451-4	SPACER, STRIPPER	28
-	1	-	468281-9	STRIPPER	27
-	1	-	1633841-1	PLATE, BASE	26
-	2	-	22354-8	STUD, THREADED	25
-	1	-	2-458803-3	PLATE, STRIP GUIDE, SLOTTED	24
-	2	-	22281-6	SPRING, COMPRESSION	22
-	1	-	1-464451-3	ARM, STOCK DRAG	21
-	1	-	1-464452-4	DRAG, STOCK	20
-	1	-	454204-5	GUIDE, LOWER STRIP	19
-	1	-	7-458031-4	STRIP GUIDE, FRONT	18
-	4	-	3-21002-3	SCR, BTN SKT HD CAP 1/4-20 X .500	17
-	1	-	1633558-3	REAR SHEAR PLATE	11
-	2	-	8-240645-2	SPACER, SHEAR PLATE	10
-	1	-	1633849-1	PLATE, FRONT SHEAR	9
1	1	-	3-1633249-9	ANVIL, COMBINATION	8
-	1	-	1-469634-5	BLADE, SLUG	7
-	1	-	1633850-1	DEPRESSOR, SHEAR	6
-	1	-	2-240641-1	SPACER	5
-	1	-	2-238009-9	BLOCK, FL CRIMPER SPACER	4
1	1	-	1633845-1	CRIMPER, INSULATION	3
-	1	-	455888-9	SPACER, CRIMPER	2
1	1	-	1633837-1	CRIMPER, WIRE	1

DIMENSIONS: INCHES 0 PLC ±.01 1 PLC ±.01 2 PLC ±.01 3 PLC ±.001 4 PLC ±.0001 ANGLES ±.001		TOLERANCES UNLESS OTHERWISE SPECIFIED: FINISH: -		DWN: L.GROSS 06OCT2009 CHK: G.BAILEY 06OCT2009 APVD: W.DEMING 06OCT2009 NAME: FINE ADJUST END FEED HDM APPLICATOR PRODUCT SPEC: - APPLICATION SPEC: - WEIGHT: - MATERIAL: -		Tyco Electronics Tyco Electronics Harrisburg, PA 17105-3608 SIZE: A1 CAGE CODE: 00779 DRAWING NO: 1855542 SCALE: 3:5 SHEET: 1 OF 1 REV: A	
---	--	---	--	--	--	---	--