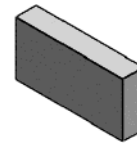
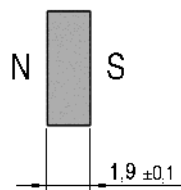
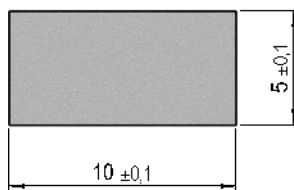


**Dimensions (mm)**

tolerances according to DIN ISO 2768-m  
Toleranzen gem. DIN ISO 2768-m

**Isometric**

Scale 2:1  
Maßstab 2:1



Mag. value. DIN IEC 60404-8-	Conditions	Min	Typ	Max	Unit
Remanence Br		1.180	1.240		mT
Revers. temp. coeff. of Br			-0,1		%/K
Coercivity HcB		860	920		kA/m
Coercivity HcJ		1.750	1.900		kA/m
Revers. temp. coeff. of HcJ			-0,6		%/K
Density			7,6		g/cu cm
Max. operating temperature				160	°C
Magnetic moment	measured with MS150	11,3			E-6 Vs*cm
Magnet Material		NdFeB, zinc plated			
Direction of Magnetization		across 1,9 mm			

General data	Conditions	Min	Typ	Max	Unit
Remarks		All details according to manufacturers information			