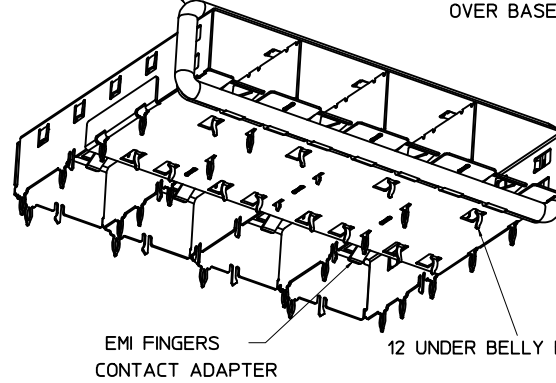


360° ELASTOMER GASKET
COMPLIES WITH (SFP) MSA
BOARD AND BEZEL LOCATIONS

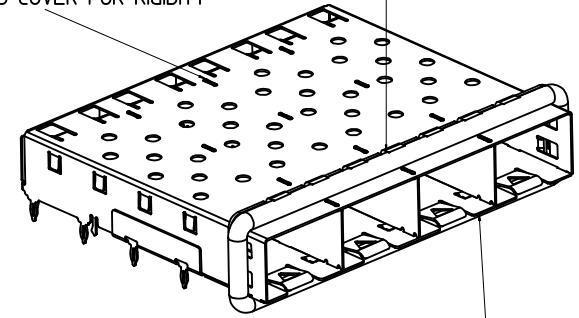


EMI FINGERS
CONTACT ADAPTER

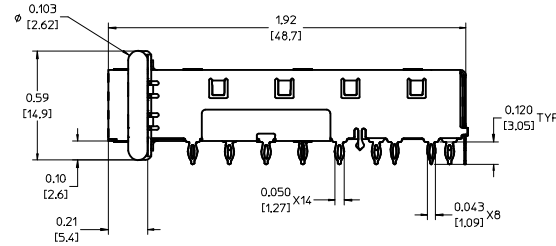
12 UNDER BELLY EMI PINS

GASKET SEAM LOCATED ON TOP OF CAGE

INNER WALL TABS ARE COINED
OVER BASE AND COVER FOR RIGIDITY



DIMENSIONS OF EACH INNER CAGE DESIGNED
TO FUNCTION WITH SMALL FORM-FACTOR
PLUGGABLE (SFP) TRANSCEIVER



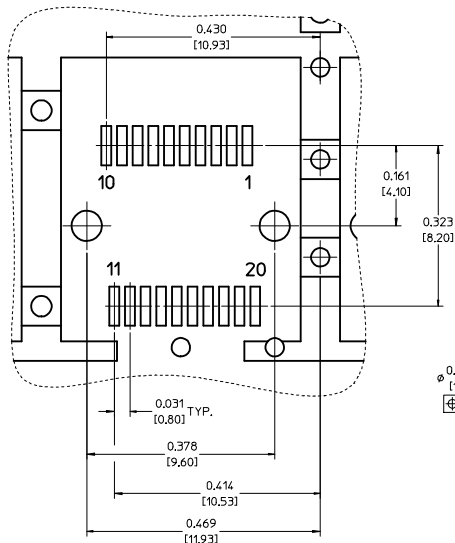
NOTES:

- PRESS FIT LEGS 0.120" LONG-
0.062 [1.57] MINIMUM PCB THICKNESS. FOR SINGLE SIDED USE ONLY.
- MATERIAL: COPPER ALLOY.
PLATING: PRE-PLATED NICKEL
- REFERENCE DOCUMENTS:
PRODUCT SPECIFICATION: PS-74728-000
COSMETIC SPECIFICATIONS: WI-HP-7-2774 AND WI-HPA-7-0093
TEST SUMMARY: TS-74728-0415
- MATES WITH SERIES 74728, LIGHT PIPE COVER ASSEMBLY.
- THIS PART MEETS THE RESTRICTION OF HAZARDOUS SUBSTANCES IN
ELECTRICAL AND ELECTRONIC EQUIPMENT (ROHS) DIRECTIVE (2002/95/EC).

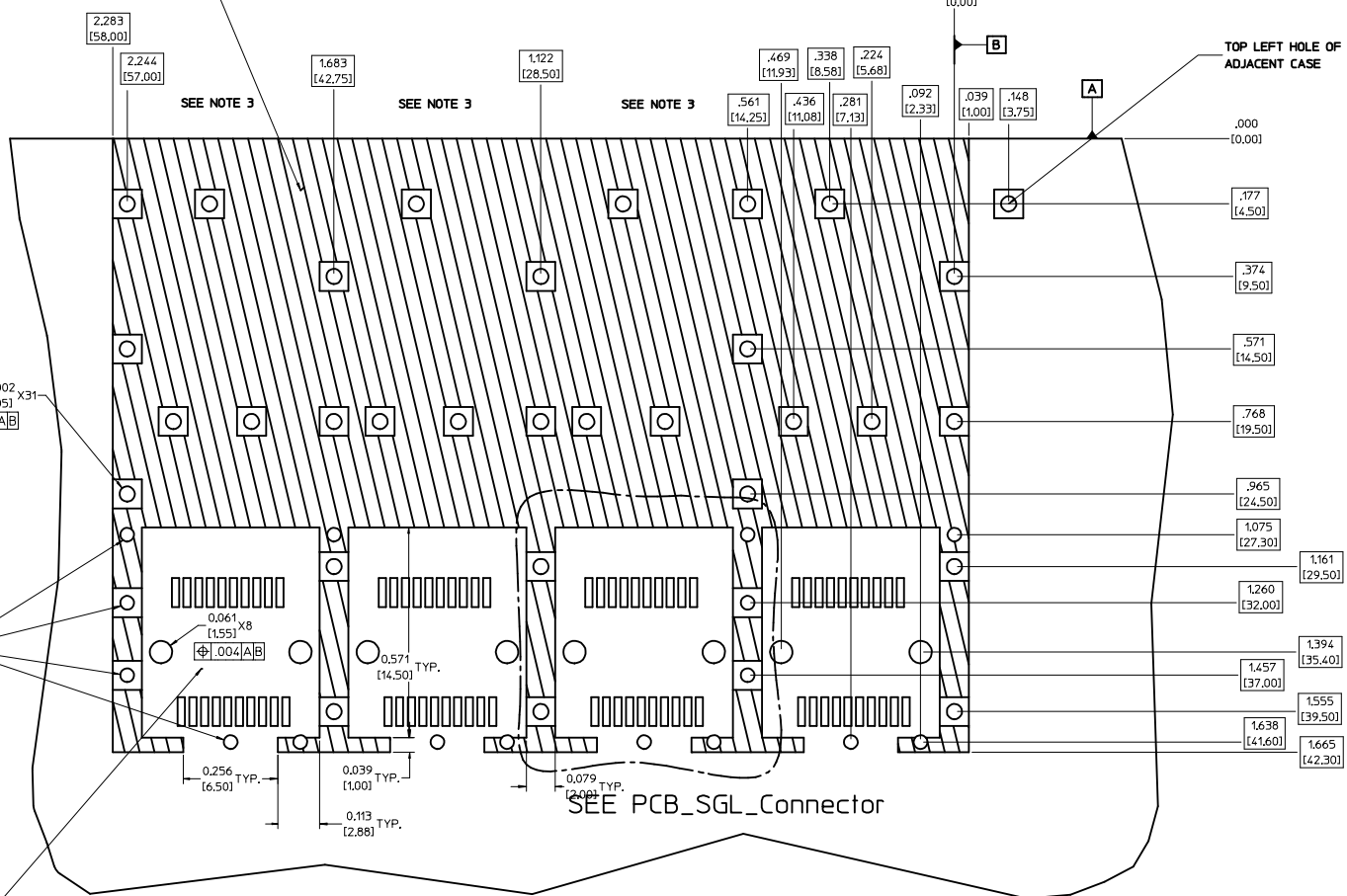
CHGD TOL ON SHIT3 EC NO: USY2007-0426 DRWN:CCOX 2007/04/20 CHKD: 2007/04/25 APPR: RMAHMO007/04/30	QUALITY SYMBOLS	GENERAL TOLERANCES (UNLESS SPECIFIED) .mm INCH 4 PLACES ± --- ± --- 3 PLACES ± --- ± .005 2 PLACES ± 0.13 ± .01 1 PLACE ± 0.25 ± --- ANGULAR ± 1° DRAFT WHERE APPLICABLE MUST REMAIN WITHIN DIMENSIONS	SCALE 3:1	DESIGN UNITS METRIC	THIRD ANGLE PROJECTION	REVISE ON CAD ONLY
	DESCRIPTION		DIMENSION STYLE IN/MM	TITLE 1X4 SFP CAGE ASSEMBLY W/ PRESS FIT PINS, PRE-PLATED		
	APPROVED BY		DATE	MATERIAL NO. 747280420	DOCUMENT NO. SD-74728-420	SHEET NO. 1 OF 4
	APPROVED BY		DATE	THIS DRAWING CONTAINS INFORMATION THAT IS PROPRIETARY TO MOLEX INCORPORATED AND SHOULD NOT BE USED WITHOUT WRITTEN PERMISSION		

PCB LAYOUT FOR SINGLE SIDE MOUNTING

PCB_SGL_Connector
SCALE 8:1



CROSS-HATCHED AREA DENOTES COMPONENT AND TRACE KEEP-OUT (EXCEPT CHASSIS GROUND)



$\phi .037 \pm .002$ [0.95 ± 0.05] X16
 $\phi .004$ [A/B]
SMALLER HOLE ON THESE FOUR ROWS ONLY

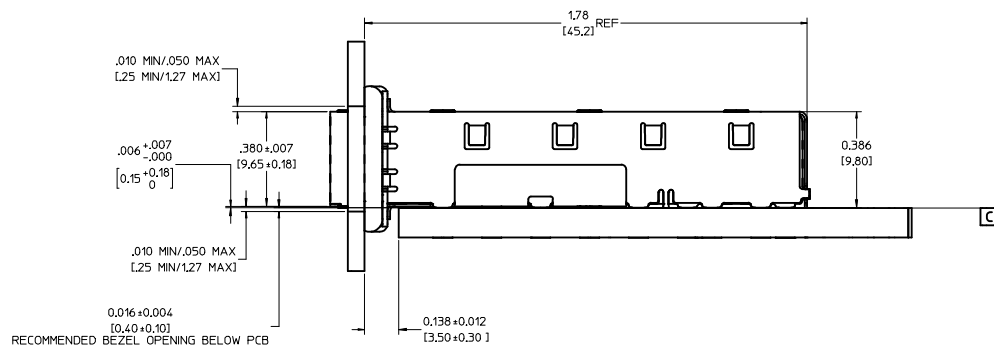
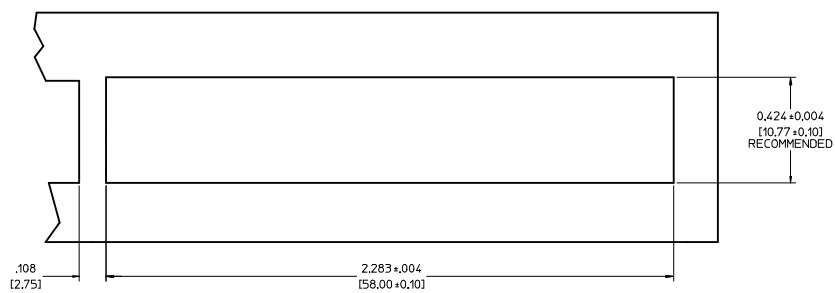
THIS AREA DENOTES COMPONENT KEEP-OUT (TRACES ALLOWED)

- NOTES:**
1. PADS AND VIAS GO TO CHASSIS GROUND, (34 PLACES). RECOMMENDED PADS TO BE 2mm SQUARE.
 2. PLATING OPTIONAL FOR THROUGH HOLES, (12 PLACES).
 3. HOLE PATTERN REPEATS FOR EACH PORT, SPACING BETWEEN PORTS IS 14.25mm.

CHGD TOL ON SH13 EC NO: USY2007-0426 DRW:CCOX 2007/04/20 CHKD: 2007/04/25 APPR: RMAHMO0007/04/30	QUALITY SYMBOLS	GENERAL TOLERANCES (UNLESS SPECIFIED)	SCALE 6:1	DESIGN UNITS METRIC	THIRD ANGLE PROJECTION	REVISE ON CAD ONLY
	DESCRIPTION 0 0	4 PLACES ± --- ± --- 3 PLACES ± --- ± .005 2 PLACES ± 0.13 ± .01 1 PLACE ± 0.25 ± --- ANGULAR ± 1 °	.mm .INCH DIMENSION STYLE IN/MM	DRAWN BY KSMONSO	DATE 2005/07/09	TITLE 1X4 SFP CAGE ASSEMBLY W/ PRESS FIT PINS, PRE-PLATED MOLEX MOLEX INCORPORATED MATERIAL NO. 747280420 DOCUMENT NO. SD-74728-420 SHEET NO. 2 OF 4
		DRAFT WHERE APPLICABLE MUST REMAIN WITHIN DIMENSIONS	APPROVED BY BRUSSELL DATE 2005/07/09	CHECKED BY BRUSSELL DATE 2005/07/09		
		THIS DRAWING CONTAINS INFORMATION THAT IS PROPRIETARY TO MOLEX INCORPORATED AND SHOULD NOT BE USED WITHOUT WRITTEN PERMISSION				

20 | 19 | 18 | 17 | 16 | 15 | 14 | 13 | 12 | 11 | 74728 | 9 | 8 | 7 | 6 | 5 | 4 | 3 | 2 | 1

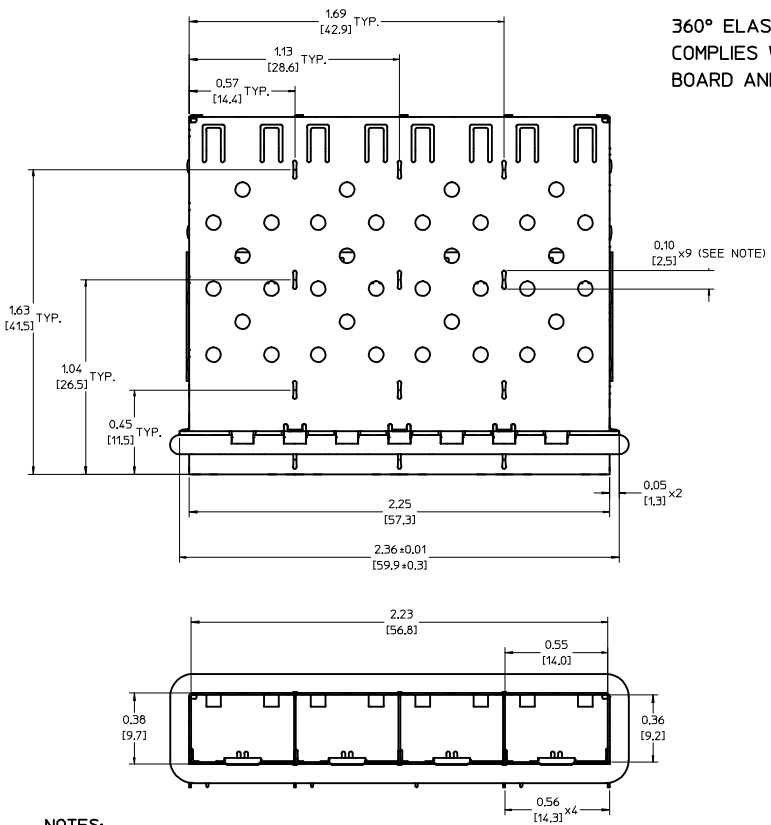
BEZEL AND BOARD POSITION DIMENSIONS FOR SINGLE SIDE MOUNTING



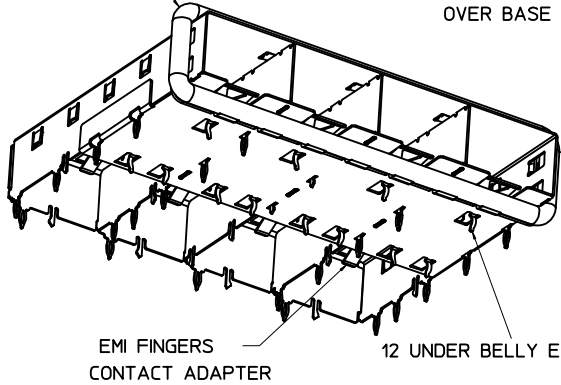
CHGD TOL ON SH13 EC NO: USY2007-0426 DRWN:CCOX 2007/04/20 CHKD: 2007/04/25 APPR: RIMAHMOO007/04/30 D	QUALITY SYMBOLS ▽-0 ▽-0 DESCRIPTION REV	GENERAL TOLERANCES (UNLESS SPECIFIED)		SCALE 4:1	DESIGN UNITS METRIC	THIRD ANGLE PROJECTION REVISE ON CAD ONLY	TITLE 1X4 SFP CAGE ASSEMBLY W/ PRESS FIT PINS, PRE-PLATED	
		4 PLACES ± --- ± --- 3 PLACES ± --- ± .005 2 PLACES ± 0.13 ± .01 1 PLACE ± 0.25 ± ---	DIMENSION STYLE IN/MM	DRAWN BY KSIMONSO	DATE 2005/07/09			
		ANGULAR ± 1 °		CHECKED BY BRUSSELL	DATE 2005/07/09	MATERIAL NO. 747280420	DOCUMENT NO. SD-74728-420	SHEET NO. 3 OF 4
		DRAFT WHERE APPLICABLE MUST REMAIN WITHIN DIMENSIONS		APPROVED BY BRUSSELL	DATE 2005/07/09	THIS DRAWING CONTAINS INFORMATION THAT IS PROPRIETARY TO MOLEX INCORPORATED AND SHOULD NOT BE USED WITHOUT WRITTEN PERMISSION		

DATE	REV	CHANGES
2005/07/09	A	INITIAL RELEASE
2006/08/07	B	ADDED NOTE IDENTIFYING HOLE ON ADJACENT CASE
2007/04/10	C	[1] ON SHT3 DELETED F9(.073); [2] ON SHT3 CHG'D F7(.138) TOLERANCE FROM ±.012 TO ±.035; [3] IDENTIFIED ALL VIEWS WITH DISTINCT NAMES.
2007/04/20	D	[1] ON SHT3 CHG'D F7(.138) TOLERANCE FROM ±.035 TO ±.012.

CHGD TOL ON SHT3 EC NO: USY2007-0426 DRAWN:CCOX 2007/04/20 CHKD: 2007/04/25 APPR: RMAHMOO007/04/30 D	QUALITY SYMBOLS	GENERAL TOLERANCES (UNLESS SPECIFIED)	SCALE 1:1	DESIGN UNITS METRIC	THIRD ANGLE PROJECTION	REVISE ON CAD ONLY																								
	▼ - 0 ▽ - 0	<table border="1"> <thead> <tr> <th></th> <th>mm</th> <th>INCH</th> </tr> </thead> <tbody> <tr> <td>4 PLACES</td> <td>± ---</td> <td>± ---</td> </tr> <tr> <td>3 PLACES</td> <td>± ---</td> <td>±.005</td> </tr> <tr> <td>2 PLACES</td> <td>± 0.13</td> <td>± .01</td> </tr> <tr> <td>1 PLACE</td> <td>± 0.25</td> <td>± ---</td> </tr> </tbody> </table>		mm	INCH	4 PLACES	± ---	± ---	3 PLACES	± ---	±.005	2 PLACES	± 0.13	± .01	1 PLACE	± 0.25	± ---	<table border="1"> <thead> <tr> <th colspan="2">DIMENSION STYLE</th> </tr> <tr> <th>IN/MM</th> <th>DATE</th> </tr> </thead> <tbody> <tr> <td>DRAWN BY</td> <td>2005/07/09</td> </tr> <tr> <td>CHECKED BY</td> <td>2005/07/09</td> </tr> <tr> <td>APPROVED BY</td> <td>2005/07/09</td> </tr> </tbody> </table>	DIMENSION STYLE		IN/MM	DATE	DRAWN BY	2005/07/09	CHECKED BY	2005/07/09	APPROVED BY	2005/07/09	TITLE 1X4 SFP CAGE ASSEMBLY W/ PRESS FIT PINS, PRE-PLATED	MOLEX INCORPORATED
			mm	INCH																										
	4 PLACES	± ---	± ---																											
3 PLACES	± ---	±.005																												
2 PLACES	± 0.13	± .01																												
1 PLACE	± 0.25	± ---																												
DIMENSION STYLE																														
IN/MM	DATE																													
DRAWN BY	2005/07/09																													
CHECKED BY	2005/07/09																													
APPROVED BY	2005/07/09																													
ANGULAR ± 1 ° DRAFT WHERE APPLICABLE MUST REMAIN WITHIN DIMENSIONS	MATERIAL NO. 747280420	DOCUMENT NO. SD-74728-420	SHEET NO. 4 OF 4																											
THIS DRAWING CONTAINS INFORMATION THAT IS PROPRIETARY TO MOLEX INCORPORATED AND SHOULD NOT BE USED WITHOUT WRITTEN PERMISSION																														

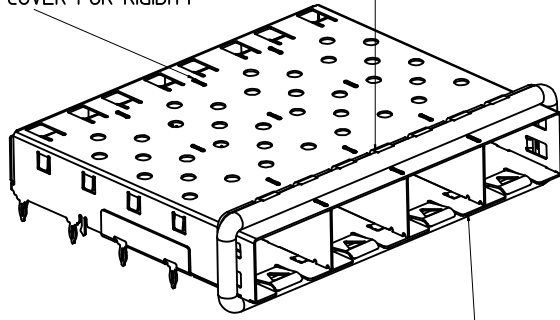


360° ELASTOMER GASKET COMPLIES WITH (SFP) MSA BOARD AND BEZEL LOCATIONS

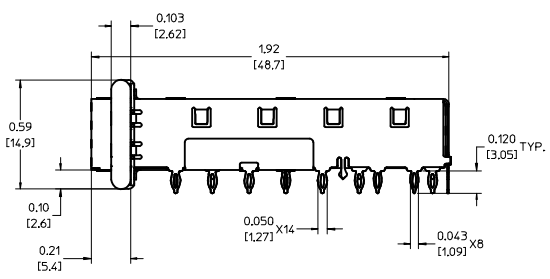


GASKET SEAM LOCATED ON TOP OF CAGE

INNER WALL TABS ARE COINED OVER BASE AND COVER FOR RIGIDITY



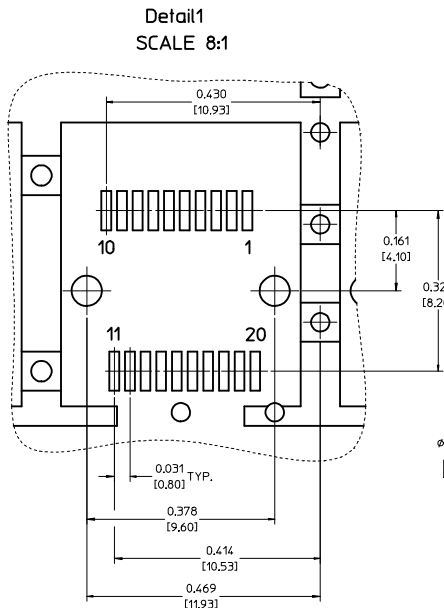
DIMENSIONS OF EACH INNER CAGE DESIGNED TO FUNCTION WITH SMALL FORM-FACTOR PLUGGABLE (SFP) TRANSCEIVER



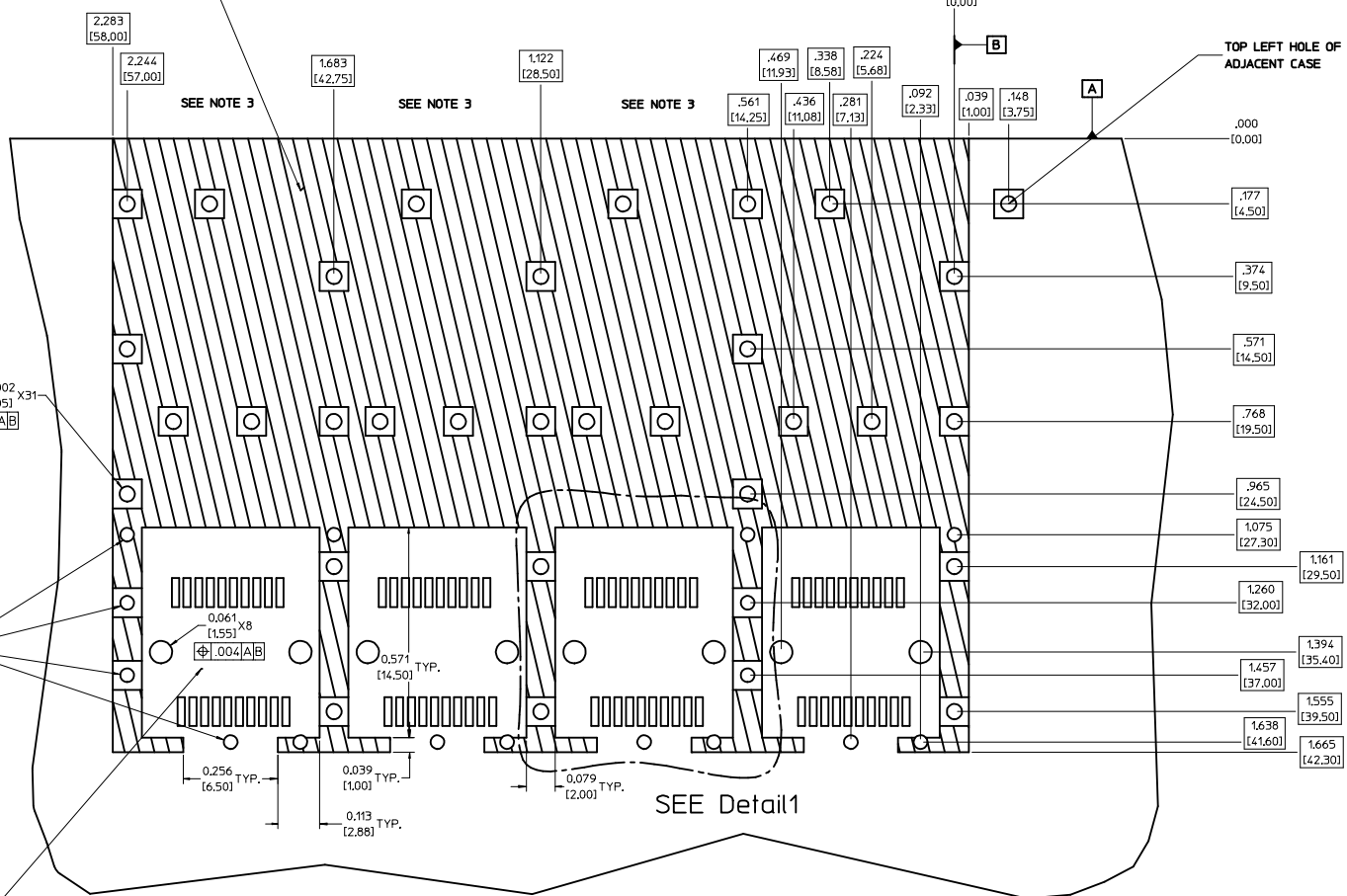
- NOTES:
- PRESS FIT LEGS 0.120" LONG- 0.062 [1.57] MINIMUM PCB THICKNESS. FOR SINGLE SIDED USE ONLY.
 - MATERIAL: COPPER ALLOY. PLATING: PRE-PLATED NICKEL
 - REFERENCE DOCUMENTS:
 PRODUCT SPECIFICATION: PS-74728-000
 COSMETIC SPECIFICATIONS: WI-HP-7-2774 AND WI-HPA-7-0093
 TEST SUMMARY: TS-74728-0415
 - MATES WITH SERIES 74728, LIGHT PIPE COVER ASSEMBLY.
 - THIS PART MEETS THE RESTRICTION OF HAZARDOUS SUBSTANCES IN ELECTRICAL AND ELECTRONIC EQUIPMENT (ROHS) DIRECTIVE (2002/95/EC).

EC NO: 2006/08/01 DRWN:CCOX 2006/08/07 CHKD: 2006/08/07 APPR:BRUSSELL 2006/08/15 REV: B	QUALITY SYMBOLS	GENERAL TOLERANCES (UNLESS SPECIFIED)	SCALE 3:1	DESIGN UNITS METRIC	THIRD ANGLE PROJECTION	REVISE ON CAD ONLY
	0 0	4 PLACES ± --- ± --- 3 PLACES ± --- ± 0.05 2 PLACES ± 0.13 ± 0.01 1 PLACE ± 0.25 ± --- ANGULAR ± 1°	DIMENSION STYLE IN/MM		TITLE	
			DRAWN BY KSIMONSO DATE 2005/07/09 CHECKED BY BRUSSELL DATE 2005/07/09 APPROVED BY BRUSSELL DATE 2005/07/09		1X4 SFP CAGE ASSEMBLY W/ PRESS FIT PINS, PRE-PLATED	
	DRAFT WHERE APPLICABLE MUST REMAIN WITHIN DIMENSIONS		MATERIAL NO. 747280420		DOCUMENT NO. SD-74728-420	SHEET NO. 1 OF 4

PCB LAYOUT FOR SINGLE SIDE MOUNTING



CROSS-HATCHED AREA DENOTES COMPONENT AND TRACE KEEP-OUT (EXCEPT CHASSIS GROUND)



SMALLER HOLE ON THESE FOUR ROWS ONLY

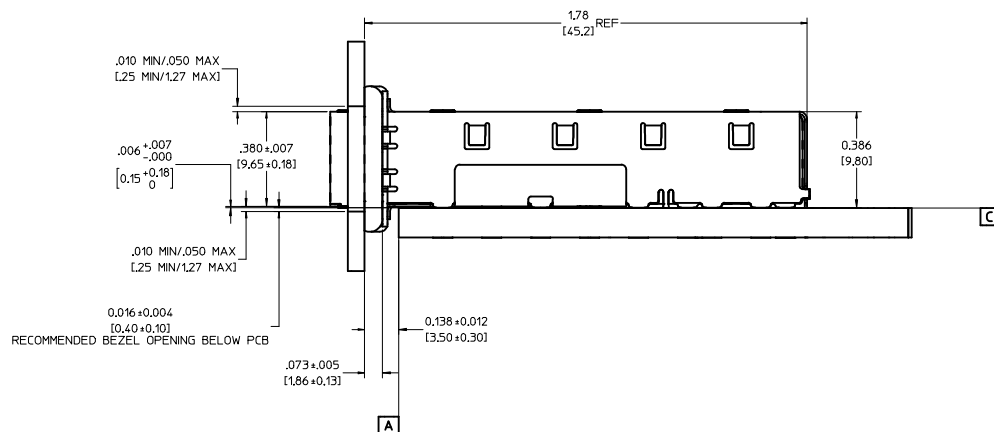
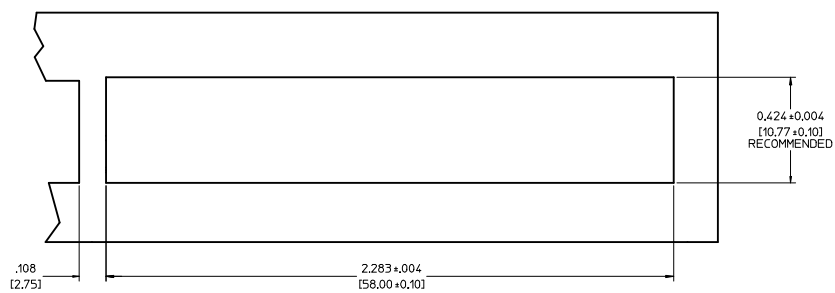
THIS AREA DENOTES COMPONENT KEEP-OUT (TRACES ALLOWED)

- NOTES:**
1. PADS AND VIAS GO TO CHASSIS GROUND, (34 PLACES). RECOMMENDED PADS TO BE 2mm SQUARE.
 2. PLATING OPTIONAL FOR THROUGH HOLES, (12 PLACES).
 3. HOLE PATTERN REPEATS FOR EACH PORT, SPACING BETWEEN PORTS IS 14.25mm.

EC NO: 2006/08/07 DRW:CCOX CHKD: 2006/08/07 APPR:BRUSSELL2006/08/15 REV: B	QUALITY SYMBOLS	GENERAL TOLERANCES (UNLESS SPECIFIED)	SCALE 6:1	DESIGN UNITS METRIC	THIRD ANGLE PROJECTION	REVISE ON CAD ONLY
	0 0	4 PLACES ± --- ± --- 3 PLACES ± --- ± .005 2 PLACES ± 0.13 ± .01 1 PLACE ± 0.25 ± --- ANGULAR ± 1 °	DIMENSION STYLE IN/MM		TITLE	
			DRAWN BY KSIMONSO DATE 2005/07/09		1X4 SFP CAGE ASSEMBLY W/ PRESS FIT PINS, PRE-PLATED	
			CHECKED BY BRUSSELL DATE 2005/07/09		MOLEX MOLEX INCORPORATED	
DRAFT WHERE APPLICABLE MUST REMAIN WITHIN DIMENSIONS		APPROVED BY BRUSSELL DATE 2005/07/09		MATERIAL NO. 747280420	DOCUMENT NO. SD-74728-420	SHEET NO. 2 OF 4
THIS DRAWING CONTAINS INFORMATION THAT IS PROPRIETARY TO MOLEX INCORPORATED AND SHOULD NOT BE USED WITHOUT WRITTEN PERMISSION						

20 | 19 | 18 | 17 | 16 | 15 | 14 | 13 | 12 | 11 | 74728 | 9 | 8 | 7 | 6 | 5 | 4 | 3 | 2 | 1

BEZEL AND BOARD POSITION DIMENSIONS FOR SINGLE SIDE MOUNTING



EC NO: 2006/08/01 DRWN:CCOX CHKD: 2006/08/07 APPR:BRUSSELL 2006/08/15 REV: B	QUALITY SYMBOLS ▽-0 ▽-0	GENERAL TOLERANCES (UNLESS SPECIFIED)		SCALE 4:1	DESIGN UNITS METRIC	THIRD ANGLE PROJECTION	REVISE ON CAD ONLY
		4 PLACES ±.005 ±.005 3 PLACES ±.013 ±.013 2 PLACES ±.025 ±.025 1 PLACE ±.025 ±.025	DIMENSION STYLE IN/MM	DRAWN BY KSIMONSO DATE 2005/07/09	CHECKED BY BRUSSELL DATE 2005/07/09		
DRAFT WHERE APPLICABLE MUST REMAIN WITHIN DIMENSIONS		ANGULAR ± 1°		APPROVED BY BRUSSELL DATE 2005/07/09	MATERIAL NO. 747280420	DOCUMENT NO. SD-74728-420	SHEET NO. 3 OF 4
THIS DRAWING CONTAINS INFORMATION THAT IS PROPRIETARY TO MOLEX INCORPORATED AND SHOULD NOT BE USED WITHOUT WRITTEN PERMISSION							

20 | 19 | 18 | 17 | 16 | 15 | 14 | 13 | 12 | 11 | 74728 | 9 | 8 | 7 | 6 | 5 | 4 | 3 | 2 | 1

DATE	REV	CHANGES	COMMENTS
2005/06/09	1	PRELIMINARY DOCUMENT	N/A
2005/07/09	A	INITIAL RELEASE	N/A
2006/08/07	B	ADDED NOTE IDENTIFYING HOLE ON ADJACENT CASE	N/A

EC NO: DRAWN: COX CHKD: APPR: BRUSSELL 2006/08/07 2006/08/07 2006/08/15	QUALITY SYMBOLS ▽-0 ▽-0	GENERAL TOLERANCES (UNLESS SPECIFIED)		SCALE 1:1	DESIGN UNITS METRIC	THIRD ANGLE PROJECTION REVISE ON CAD ONLY	TITLE 1X4 SFP CAGE ASSEMBLY W/ PRESS FIT PINS, PRE-PLATED		
		.mm .INCH		DIMENSION STYLE IN/MM					
		4 PLACES ± --- ± --- 3 PLACES ± --- ±.005 2 PLACES ± 0.13 ±.01 1 PLACE ± 0.25 ± ---		DRAWN BY DATE K SIMONSO 2005/07/09		CHECKED BY DATE BRUSSELL 2005/07/09		MOLEX INCORPORATED	MATERIAL NO. 747280420
		ANGULAR ± 1 ° DRAFT WHERE APPLICABLE MUST REMAIN WITHIN DIMENSIONS		APPROVED BY DATE BRUSSELL 2005/07/09		DOCUMENT NO. SD-74728-420			
THIS DRAWING CONTAINS INFORMATION THAT IS PROPRIETARY TO MOLEX INCORPORATED AND SHOULD NOT BE USED WITHOUT WRITTEN PERMISSION									

19 | 18 | 17 | 16 | 15 | 14 | 13 | 12 | 11 | 10 | 9 | 8 | 7 | 6 | 5 | 4 | 3 | 2 | 1