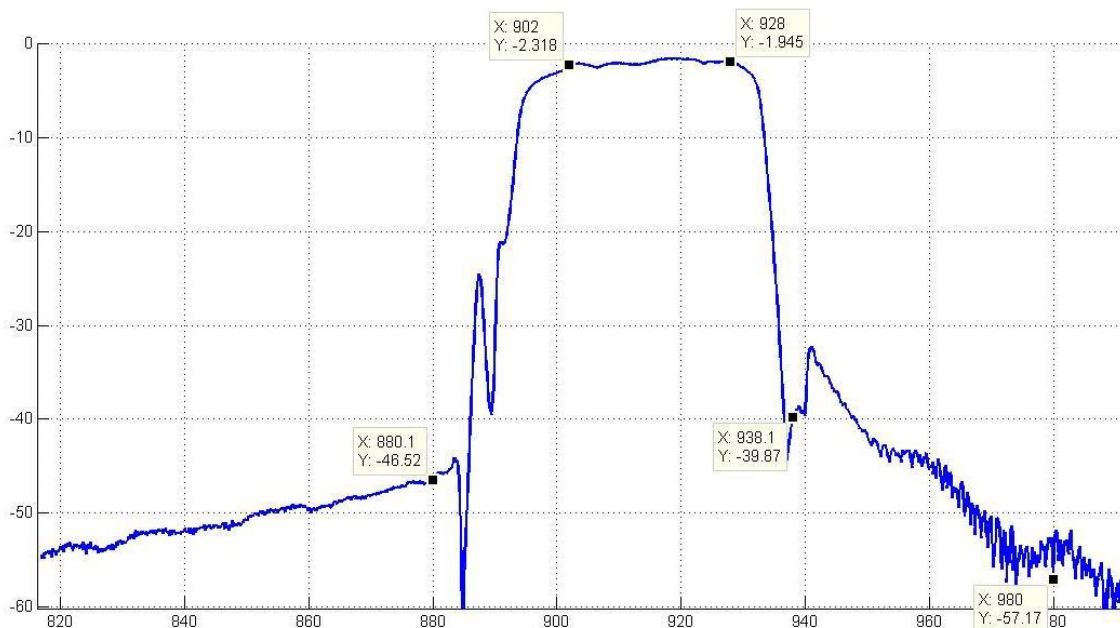


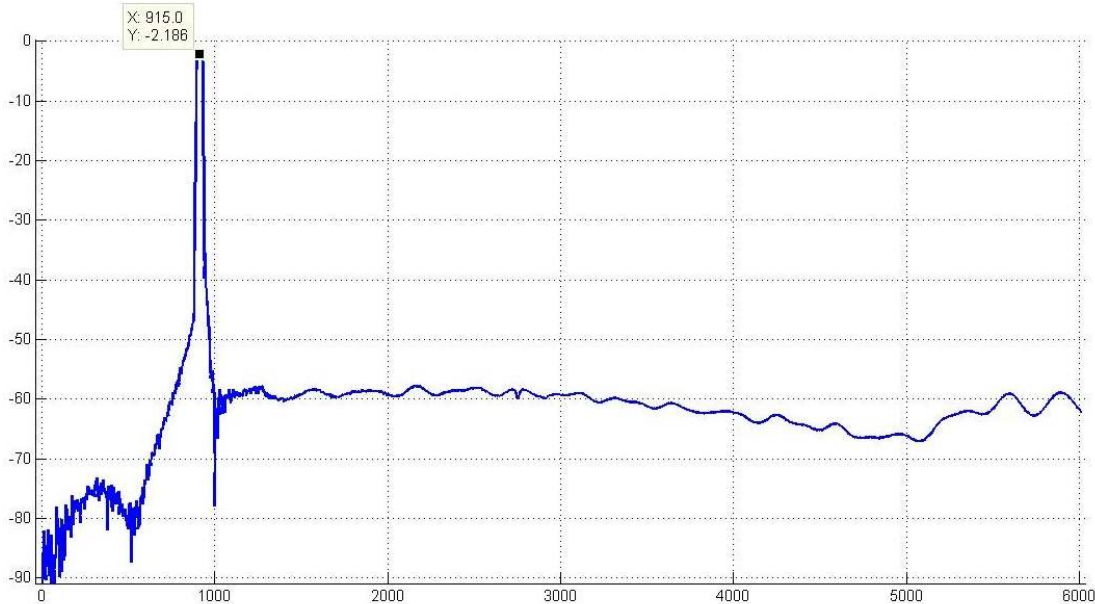
1. CHARACTERISTICS AT 25°C

Parameters		Specification	Unit
Center Frequency (Fo)		915.000	MHz
Insertion Loss (902 ~ 928MHz), typ/max		2.3 / 3.0	dB
Passband Ripple (902 ~ 928MHz), typ/max		0.8 / 1.5	dB
Attenuation, Min/typ	10 ~ 880 MHz	-35 / -47	dB
	880 ~ 890 MHz	-20 / -25	dB
	894 MHz	- / -8	dB
	938 ~ 980 MHz	-30 / -33	dB
	980 ~ 1500 MHz	-35 / -50	dB
	1500 ~ 2500 MHz	-35 / -50	dB
Power		10	dBm
Voltage		10	V
In/Out Impedance		50	Ω
Operating temperature Range		-40 to +85	°C
Storage Temperature Range		-40 to +85	°C

Note: Specification at T=25°C

Frequency Characteristics

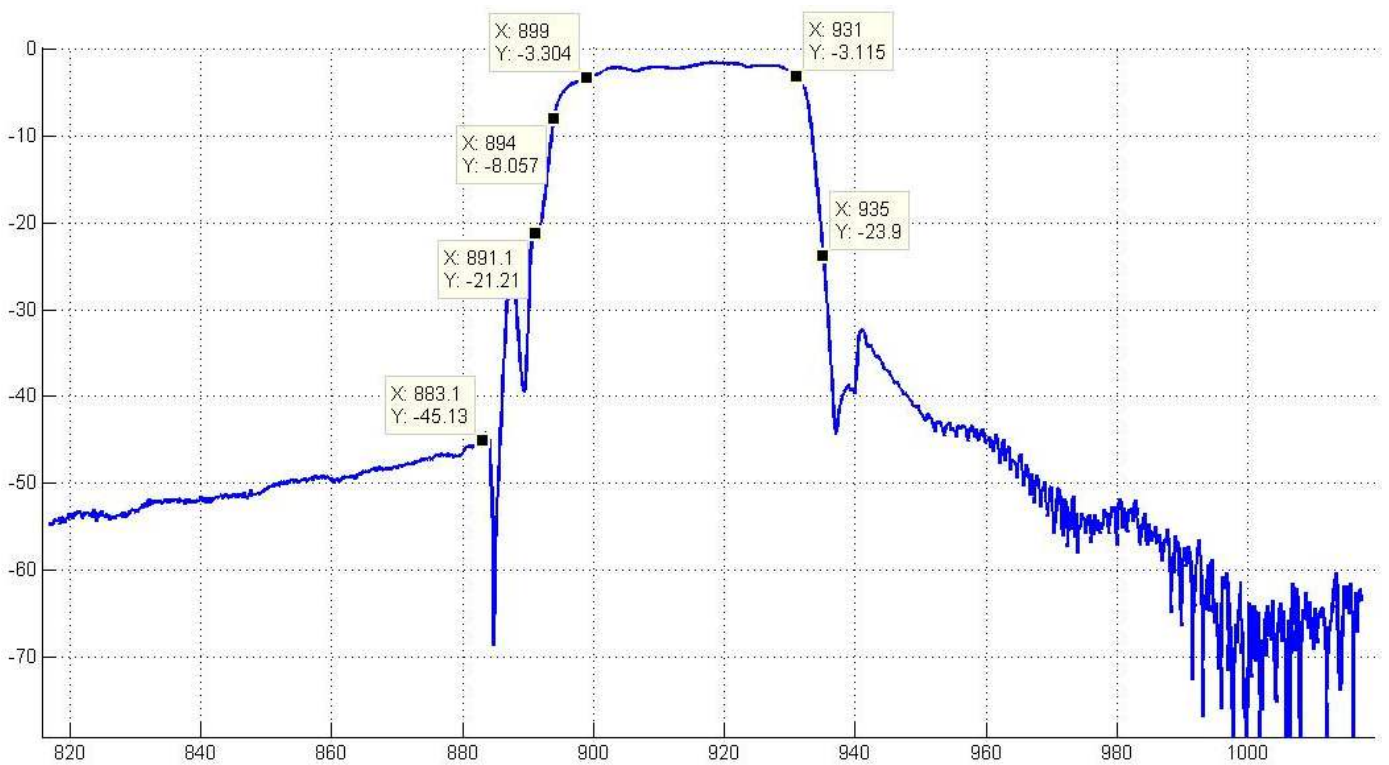




2. CHARACTERISTICS OVER -40°C TO + 85°C

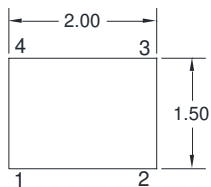
Parameters	Specification	Unit
Center Frequency (Fo)	915.000	MHz
Insertion Loss (902 ~ 928MHz), typ/max	3.0 / 3.5	dB
Passband Ripple (902 ~ 928MHz), typ/max	1.5 / 2.0	dB
Attenuation, min/typ	10 ~ 880 MHz	-35 / -45
	880 ~ 890 MHz	-12 / -20
	894 MHz	- / -4.5
	938 ~ 980 MHz	-20 / -30
	980 ~ 1500 MHz	-35 / -50
	1500 ~ 2500 MHz	-35 / -50
Power	10	dBm
Voltage	10	V
In/Out Impedance	50	Ω
Operating temperature Range	-40 to +85	°C
Storage Temperature Range	-40 to +85	°C

Frequency Characteristics

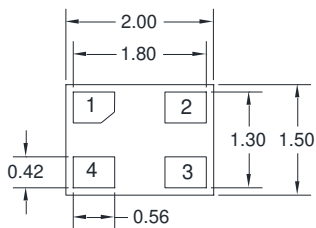


Dimension

TOP VIEW



BOTTOM VIEW



Pin Number	Function
1	Input
2	GND
3	Output
4	GND



APPROVAL

DRAWN BY	LP, November 15, 2016
APPROVED BY	CP, November 15, 2016
REVISION	A, Initial Release B, CP, December 2, 2016 Added Characteristics over -40°C to + 85°C Added Attenuation at 880~894MHz Added Attenuation 1500~2500MHz