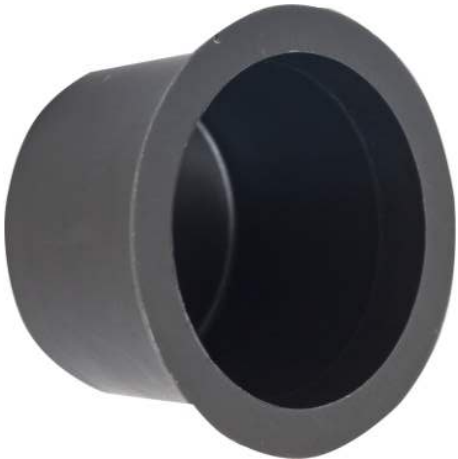


Product data sheet

Characteristics

NSYEBP2

Power distribution block, Linergy, enclosed, terminal plug, for 2 AWG opening



Complementary

Height	0.53 in (13.46 mm)
Width	0.53 in (13.46 mm)
Depth	0.4 in (10.16 mm)

Ordering and shipping details

Category	21713-IEC ENCLOSED POWER DISTR BLOCKS
Discount Schedule	CP-1
GTIN	785901636014
Nbr. of units in pkg.	1
Package weight(Lbs)	0.16 oz (4.536 g)
Returnability	No
Country of origin	US

Packing Units

Unit Type of Package 1	PCE
Package 1 Height	0.50 in (1.27 cm)
Package 1 width	0.50 in (1.27 cm)
Package 1 Length	0.40 in (1.016 cm)