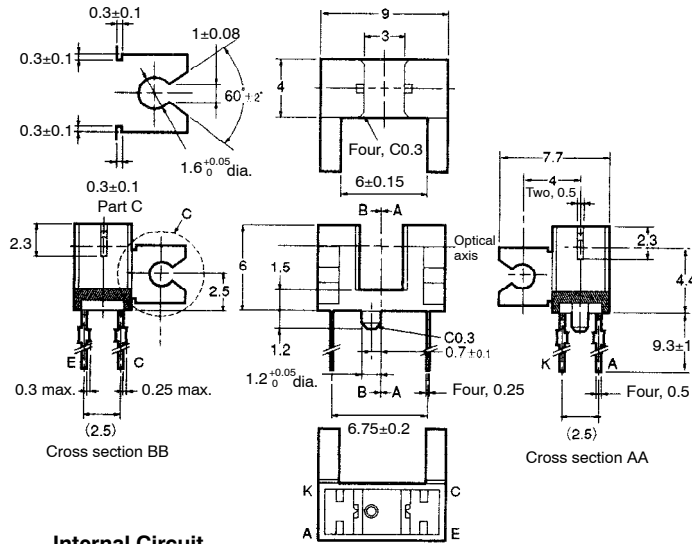
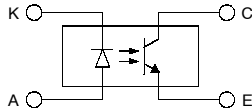


### ■ Dimensions

**Note:** All units are in millimeters unless otherwise indicated.



Internal Circuit



Unless otherwise specified, the tolerances are as shown below.

| Dimensions   | Tolerance |
|--------------|-----------|
| 3 mm max.    | ±0.3      |
| 3 < mm ≤ 6   | ±0.375    |
| 6 < mm ≤ 10  | ±0.45     |
| 10 < mm ≤ 18 | ±0.55     |
| 18 < mm ≤ 30 | ±0.65     |

| Terminal No. | Name      |
|--------------|-----------|
| A            | Anode     |
| K            | Cathode   |
| C            | Collector |
| E            | Emitter   |

### ■ Features

- An actuator can be attached.
- PCB mounting type.
- High resolution with a 0.5-mm-wide aperture.

### ■ Absolute Maximum Ratings (Ta = 25°C)

| Item                  | Symbol                    | Rated value                  |
|-----------------------|---------------------------|------------------------------|
| Emitter               | Forward current           | $I_F$ 50 mA (see note 1)     |
|                       | Pulse forward current     | $I_{FP}$ 1 A (see note 2)    |
|                       | Reverse voltage           | $V_R$ 4 V                    |
| Detector              | Collector-Emitter voltage | $V_{CEO}$ 30 V               |
|                       | Emitter-Collector voltage | $V_{ECO}$ ---                |
|                       | Collector current         | $I_C$ 20 mA                  |
|                       | Collector dissipation     | $P_C$ 100 mW (see note 1)    |
|                       | Ambient temperature       | Operating                    |
|                       | Storage                   | $T_{stg}$ -30°C to 100°C     |
| Soldering temperature |                           | $T_{sol}$ 260°C (see note 3) |

- Note:**
1. Refer to the temperature rating chart if the ambient temperature exceeds 25°C.
  2. The pulse width is 10 μs maximum with a frequency of 100 Hz.
  3. Complete soldering within 10 seconds.

### ■ Ordering Information

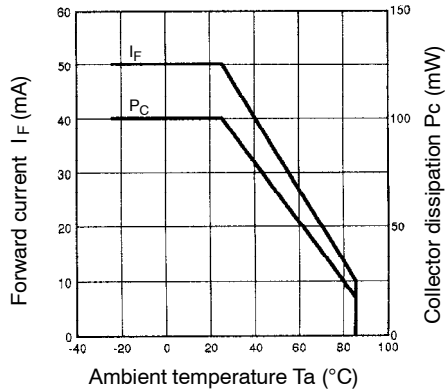
| Description                         | Part number |
|-------------------------------------|-------------|
| Photomicrosensor (Actuator Mounted) | EE-SA103    |

### ■ Electrical and Optical Characteristics (Ta = 25°C)

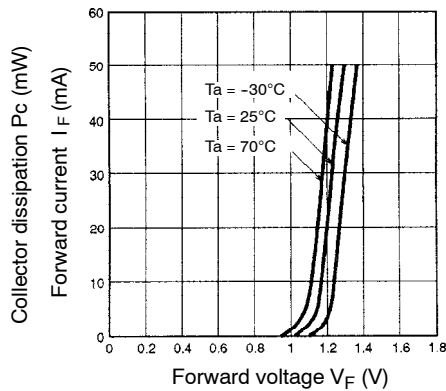
| Item         | Symbol                               | Value                                       | Condition                      |
|--------------|--------------------------------------|---|--------------------------------|
| Emitter      | Forward voltage                      | $V_F$ 1.2 V typ., 1.5 V max.                | $I_F = 30$ mA                  |
|              | Reverse current                      | $I_R$ 0.01 μA typ., 10 μA max.              | $V_R = 4$ V                    |
|              | Peak emission wavelength             | $\lambda_P$ 940 nm typ.                     | $I_F = 20$ mA                  |
| Detector     | Light current                        | $I_L$ 0.5 mA min., 14 mA max.               | $I_F = 20$ mA, $V_{CE} = 10$ V |
|              | Dark current                         | $I_D$ 2 nA typ., 200 nA max.                | $V_{CE} = 10$ V, 0 lx          |
|              | Leakage current                      | $I_{LEAK}$ ---                              | ---                            |
|              | Collector-Emitter saturated voltage  | $V_{CE(sat)}$ 0.1 V typ., 0.4 V max.        | $I_F = 20$ mA, $I_L = 0.1$ mA  |
|              | Peak spectral sensitivity wavelength | $\lambda_P$ 850 nm typ.                     | $V_{CE} = 10$ V                |
| Rising time  | $t_r$ 4 μs typ.                      | $V_{CC} = 5$ V, $R_L = 100$ Ω, $I_L = 5$ mA |                                |
| Falling time | $t_f$ 4 μs typ.                      | $V_{CC} = 5$ V, $R_L = 100$ Ω, $I_L = 5$ mA |                                |

■ Engineering Data

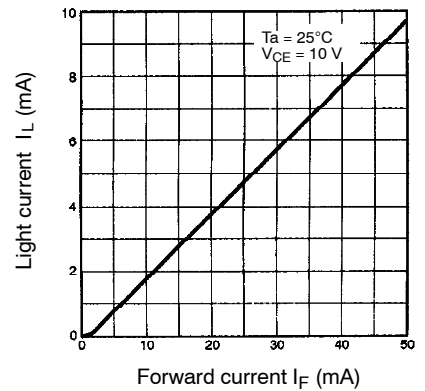
Forward Current vs. Collector Dissipation Temperature Rating



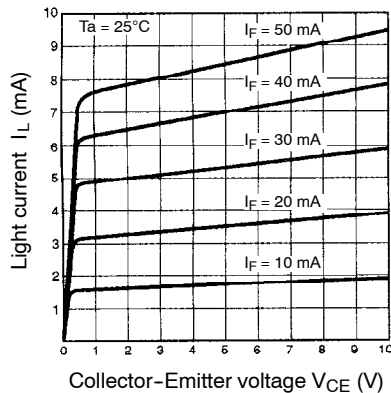
Forward Current vs. Forward Voltage Characteristics (Typical)



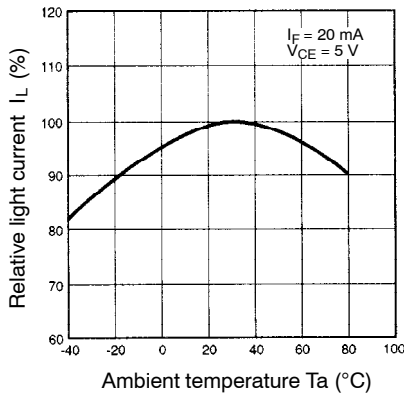
Light Current vs. Forward Current Characteristics (Typical)



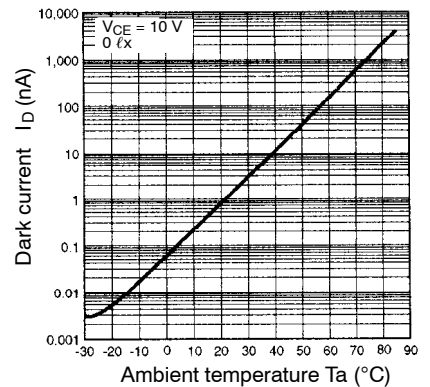
Light Current vs. Collector-Emitter Voltage Characteristics (Typical)



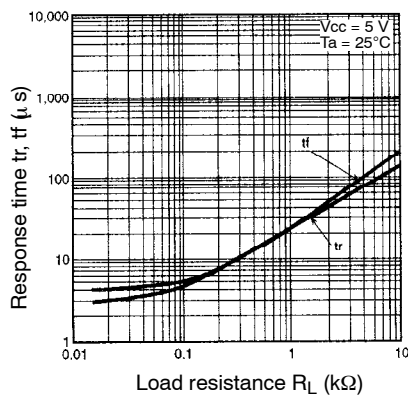
Relative Light Current vs. Ambient Temperature Characteristics (Typical)



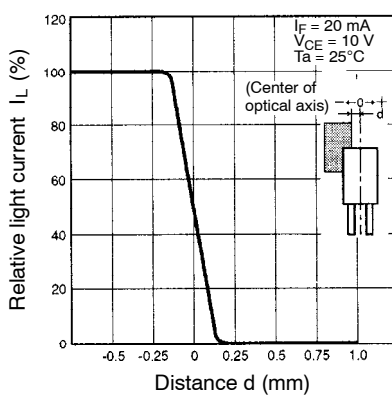
Dark Current vs. Ambient Temperature Characteristics (Typical)



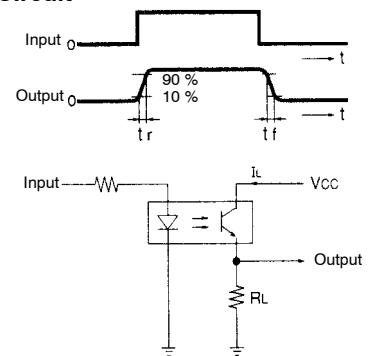
Response Time vs. Load Resistance Characteristics (Typical)



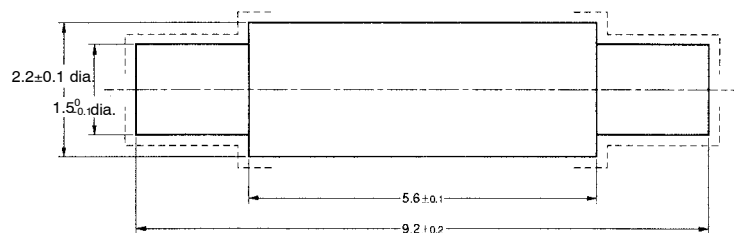
Sensing Position Characteristics (Typical)



Response Time Measurement Circuit



Actuator Dimensions



- Note:**
1. Make sure that the portions marked with dotted lines have no burrs.
  2. The material of the actuator must be selected by considering the infrared permeability of the actuator.

**NOTE: DIMENSIONS SHOWN ARE IN MILLIMETERS. To convert millimeters to inches divide by 25.4.**

---

**OMRON**<sup>®</sup>

**OMRON ELECTRONICS LLC**

One East Commerce Drive  
Schaumburg, IL 60173

**847-882-2288**

**OMRON CANADA, INC.**

885 Milner Avenue  
Toronto, Ontario M1B 5V8

**416-286-6465**

**OMRON ON-LINE**

Global – <http://www.omron.com>  
USA – <http://www.omron.com/oei>  
Canada – <http://www.omron.com/oci>