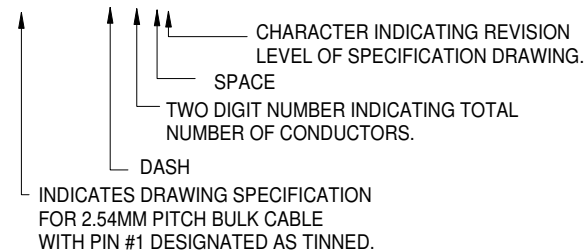


**PROPRIETARY INFORMATION NOTICE**  
 This document and the designs, specifications, and engineering information disclosed herein are the property of Parlex Corp., and are not to be disseminated or reproduced without expressed written consent. This document is loaned in confidence and then only for consideration of the matter disclosed hereon. In accepting loan of this document, the recipient agrees to keep it and the matter disclosed hereon in confidence and not to use or permit their use in any way detrimental to Parlex Corp.

**Non RoHS Part Numbering System**

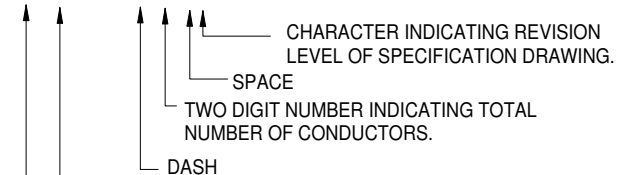
**PS-1635-XX B**



i.e. PS-1635-20 B  
 ( INDICATES 20 POS. CABLE, 2.54MM PITCH, COND. #1 TINNED )

**RoHS Part Numbering System**

**PSR1635-XX B**



"R" INDICATES CABLE IS RoHS COMPLIANT

INDICATES DRAWING SPECIFICATION FOR 2.54MM PITCH BULK CABLE WITH PIN #1 DESIGNATED AS TINNED.

i.e. PSR1635-20 B  
 ( INDICATES 20 POS. CABLE, 2.54MM PITCH, COND. #1 TINNED, RoHS COMPLIANT )

- 1) BULK CABLE SPECIFICATION FOR 2.54MM PITCH FLAT LAMINATED CABLE.
- 2) NUMBER OF CONDUCTORS AVAILABLE 1 THROUGH 99
- 3) CONDUCTOR NUMBER 1 IS DISTINGUISHED FROM REMAINING CONDUCTORS BY TIN PLATING. IT IS VISIBLE, AS SUCH, THROUGH POLYESTER INSULATION.
- 4) INSULATION: 0.002" THICK POLYESTER WITH FLAME RETARDANT ADHESIVE.
- 5) CONDUCTORS: 0.003" X 0.050" FLAT COPPER, POS. #1 IS TIN PLATED (27 AWG EQUIVALENT)
- 6) U.L. RATING: AWM STYLE 2643, 105°C, VW-1, 300V
- 7) CURRENT RATING: 3A MAXIMUM
- 8) DIELECTRIC STRENGTH: 2500V/MIL
- 9) WHEN ORDERING, USE PART NUMBERING SYSTEM DESCRIBED TO DETERMINE NUMBER OF CONDUCTORS REQUIRED
- 10) CABLE WIDTH= (NUMBER OF CONDUCTORS +1 ) X 0.100"

<b>P</b> ARLEX CORPORATION One Parlex Place Methuen, Ma 01844 LAMINATED CABLE DIVISION			
SPECIFICATION DRAWING FOR BULK CABLE, 2.54MM PITCH, COND. #1 TINNED, MATCHING STANDARD AMP REQUIREMENTS FOR .100" CENTERLINE FFC			
SIZE <b>B</b>	FSCM 18377	<b>PS-1635</b>	Rev. <b>B</b>
SCALE NA		SHEET 1 OF	1