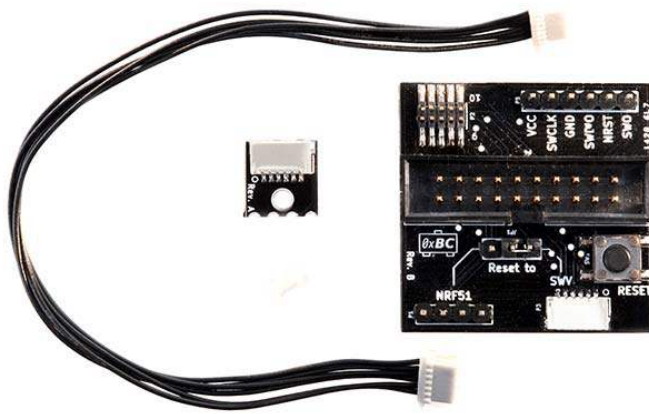


# Crazyflie 2.0 debug adapter kit

SKU 114990118



## Description

One of our goals is to make development with the Crazyflie 2.0 as easy as possible. But due to the platforms small size there are limitations on what connectors we can have. Therefore we designed a debug-adapter kit that makes connecting a debugger to either of the MCUs a lot easier, by converting the connector pinouts to standard JTAG and SWD pinouts.

This product is intended to be used together with the Crazyflie 2.0.

## Features

- Includes everything needed to more easily debug the MCUs (STM32F4 and nRF51)
- Multiple debug pinouts supported (including 20-pin JTAG and 10-pin Cortex debug)

## Specification

- Supported debugger pinouts:
- Custom pinout that matches ST Discovery board debug interfaces
- Standard Cortex SWV debug 2x6 1.27mm (50mil) SWV interface
- Standard 2x10 2.54mm (100mil) JTAG interface
- Has reset button with jumper for reset support on either STM32F4 and nRF51

## Part List

- 1 x Crazyflie 2.0 debug adapter
- 1 x nRF51 debug connector
- 1 x Nylon screw and nut for nRF51 debug connector
- 1 x 6-pin debug cable for connecting to the Crazyflie 2.0

## Support

If you have any further question for technical support, please contact [support\(at\)bitcraze.se](mailto:support@bitcraze.se).