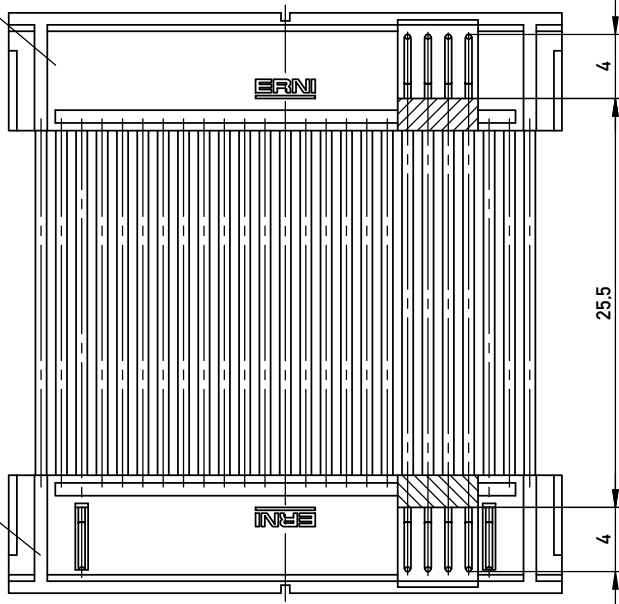
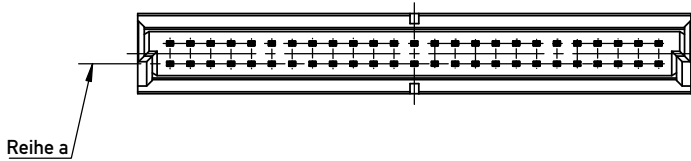
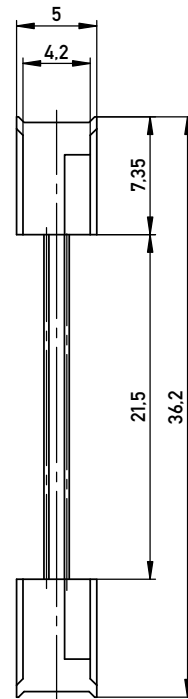


ohne Verriegelung
without interlocking

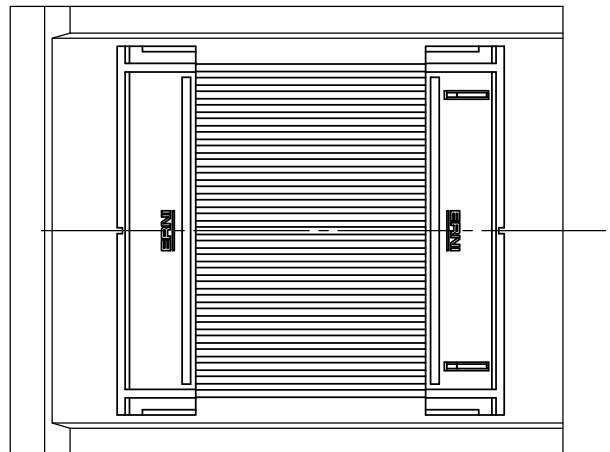
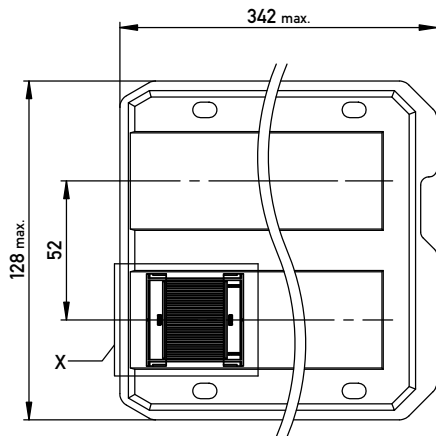


mit Verriegelung
with interlocking

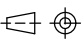



verpackt in Tray -tray packaging
Verpackungseinheit 16 Stück -packaging unit 16

Einzelheit X (M 2:1)
detail X



Adapterstück für board-to-board Abstand von 38mm (beidseitig verbaut mit Federleiste: 154807, Low Profile)
Adapter for board-to-board height 38mm (in combination with two female connectors: 154807, low profile)

Information: All rights reserved. Only for Information. To ensure that this is the latest version of this drawing, please contact one of the ERNI companies before using.	Tolerances  All Dimensions in mm	Scale 3:1		
	Subject to modification without prior notice. Drawing will not be updated.	Designation 1,27 DRC Adapterstück BTB 38mm 50-polig		
a Index	28.07.2015 Date	 www.ERNI.com		354316 I A3
		Class DRCBTB		

Copyright by ERNI GmbH
 Proprietary notice pursuant to ISO 16016 to be observed.