

ALL DIMENSIONS ARE REFERENCES

DESIGNED & DIMENSIONED
IN MILLIMETERS

CC09X-01-XX

SUPPLIED
-R: REEL
-M: MINI REEL

PLATING
-T: BRIGHT ACID TIN (FOR EXISTING CUSTOMER ONLY)
-GF: 3µ" FLASH SELECTIVE IN CONTACT AREA,
3µ" GOLD ON TAIL

LEAD STYLE
-01

CARRIER SPECIFICATIONS

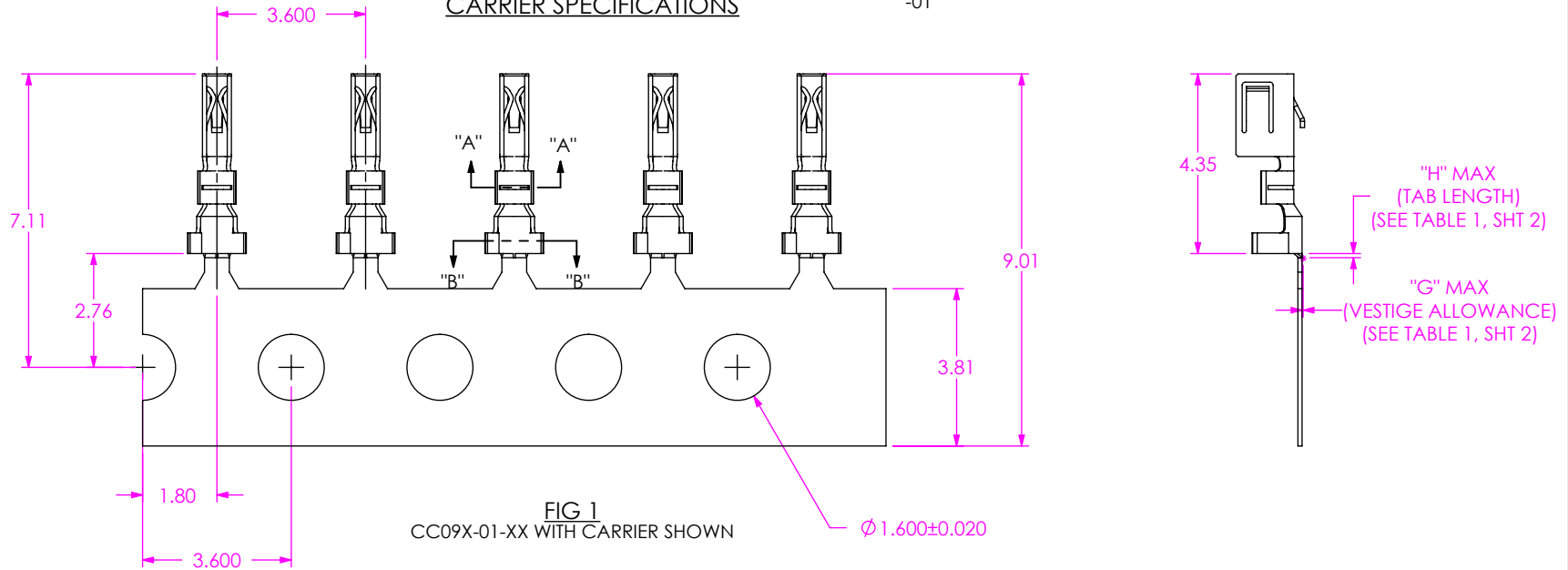
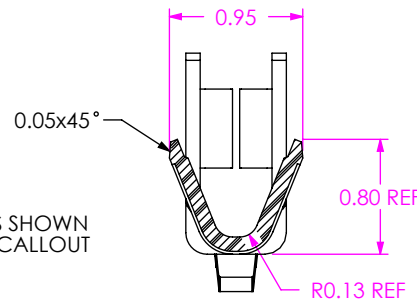
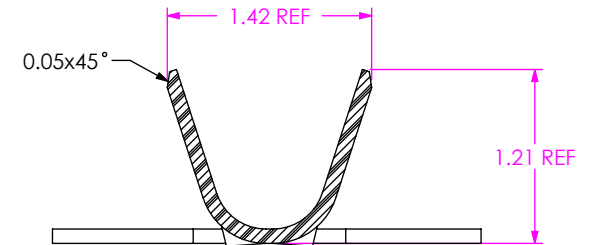


FIG 1
CC09X-01-XX WITH CARRIER SHOWN



SECTION "A"-"A"



SECTION "B"-"B"

- NOTES:
1. PLATED C-309 PARTS TO BE PULLED, PLATING OPTION CONFIRMED, POSITIONED AS SHOWN ON SAMTEC REEL WITH VIEWPORTS, LABELED CC09R WITH APPROPRIATE PLATING CALLOUT AND LABEL PLACED AS SHOWN.
 2. MAXIMUM No OF SPLICES PER REEL:
-R: 2
-M: 1
 3. SPLICES ARE NOT TO BE CONNECTED.
 4. NUMBER OF SPLICES TO BE MARKED ON EACH REEL.
 5. REELED PARTS TO BE INTERLEAVED WITH PAPER BETWEEN EACH LAYER OF PARTS.
 6. ALLOWABLE INTERLEAF SPLICES PER REEL:
-R: 3
-M: 1
 7. SECURELY CONNECT INTERLEAF SPLICE.
 8. OUTER WRAP SHALL RECEIVE PROTECTIVE REEL BAND SEE TABLE 2.
 9. DUE TO PLATING REQUIREMENTS CONTACT SAMPLES MAY BE REMOVED INTERMITTINGLY FROM THE CARRIER RESULTING IN SMALL GAPS BUT DOES NOT AFFECT FINAL COUNT.
 10. QTY PER REEL:
-R: 25,000 +300/-0 PCS
-M: 1,000 - 5,000 +300/-0 PCS

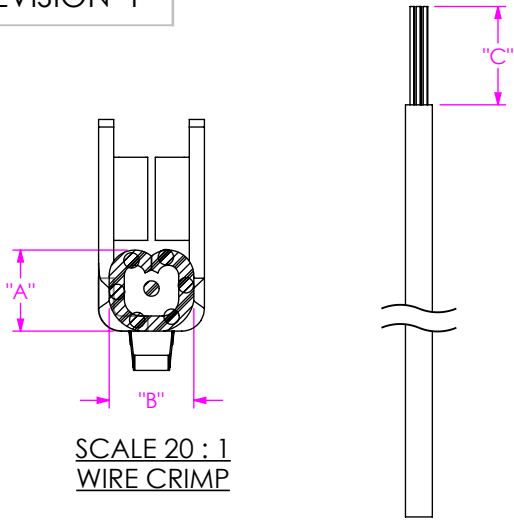
UNLESS OTHERWISE SPECIFIED,
DIMENSIONS ARE IN MILLIMETERS.
TOLERANCES ARE:
DECIMALS ANGLES

PROPRIETARY NOTE
THIS DOCUMENT CONTAINS CONFIDENTIAL AND PROPRIETARY INFORMATION AND ALL DESIGN, MANUFACTURING, REPRODUCTION, USE, PATENT RIGHTS AND SALES RIGHTS ARE EXPRESSLY RESERVED BY SAMTEC, INC. THIS DOCUMENT SHALL NOT BE DISCLOSED, IN WHOLE OR PART, TO ANY UNAUTHORIZED PERSON OR ENTITY NOR REPRODUCED, TRANSFERRED OR INCORPORATED IN ANY OTHER PROJECT IN ANY MANNER WITHOUT THE EXPRESS WRITTEN CONSENT OF SAMTEC, INC.



520 PARK EAST BLVD, NEW ALBANY, IN 47150
PHONE: 812-944-6733 FAX: 812-948-5047
e-Mail: info@SAMTEC.com code: 55322

MATERIAL:	DO NOT SCALE DRAWING	SHEET SCALE: 19:1	DESCRIPTION:	1.00 MM PITCH S1SX CONTACT
PHOS BRONZE			DWG. NO.	CC09X-01-XX
THICKNESS: 0.100			BY: SHERRY W 11/3/2011	SHEET 1 OF 2



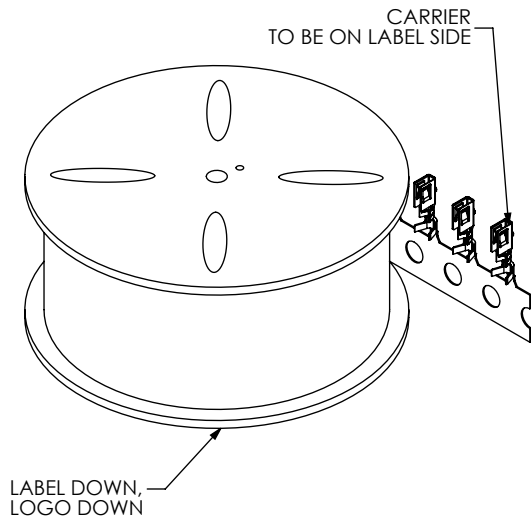
SCALE 20 : 1
WIRE CRIMP

INSULATION STRIP LENGTH

P/N	AWG	STRANDS / AWG	INSULATION OD	"A"	"B"	"C"	"G" MAX (TAB LENGTH)	"H" MAX (VESTIGE LENGTH)	PULL FORCE (LBS)
CC09X-01-XX	28	7/36	0.8382 - 0.9652	0.432	0.704	1.40	0.03	0.15	2
	28TC	7/36		0.419	0.704	1.40	0.03	0.15	2
	30	7/38	0.7366 - 0.889	0.406	0.704	1.40	0.03	0.15	1.5
	30TC	7/38		0.406	0.704	1.40	0.03	0.15	1.5

FIG 2
RECOMMENDED PROCESSING

SUPPLIED	REEL PART NUMBER	"D"	"E"	"F"	BELLY BAND
-R	R-24-05.00-0.50-P	610	139.7	28.58	RB-24-0.50-P
-M	MR-13-4.00-12	330	101.6	1.27	CRT-012-0.018



LABEL DOWN,
LOGO DOWN

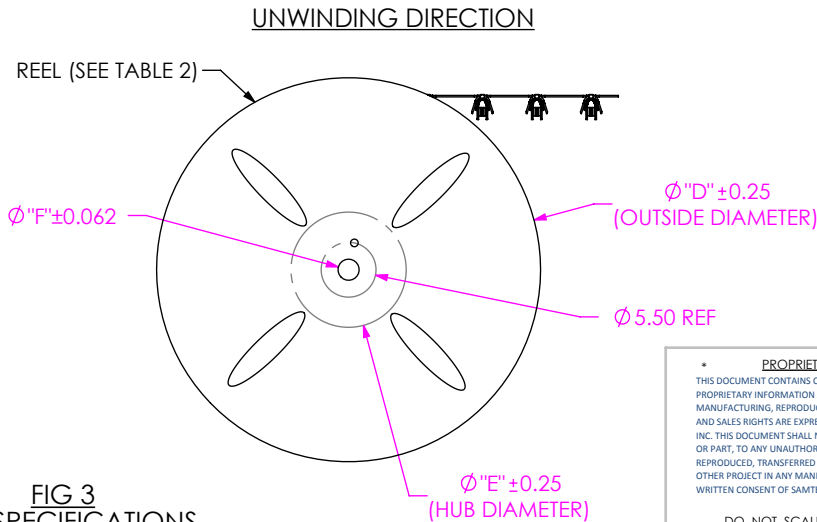


FIG 3
REEL SPECIFICATIONS

PROPRIETARY NOTE
THIS DOCUMENT CONTAINS CONFIDENTIAL AND PROPRIETARY INFORMATION AND ALL DESIGN, MANUFACTURING, REPRODUCTION, USE, PATENT RIGHTS AND SALES RIGHTS ARE EXPRESSLY RESERVED BY SAMTEC, INC. THIS DOCUMENT SHALL NOT BE DISCLOSED, IN WHOLE OR PART, TO ANY UNAUTHORIZED PERSON OR ENTITY NOR REPRODUCED, TRANSFERRED OR INCORPORATED IN ANY OTHER PROJECT IN ANY MANNER WITHOUT THE EXPRESS WRITTEN CONSENT OF SAMTEC, INC.

DO NOT SCALE DRAWING

SHEET SCALE: 6:1



520 PARK EAST BLVD, NEW ALBANY, IN 47150
PHONE: 812-944-6733 FAX: 812-948-5047
e-Mail: info@SAMTEC.com code: 55322

DESCRIPTION: 1.00 MM PITCH S1SX CONTACT

DWG. NO. CC09X-01-XX

BY: SHERRY W 11/3/2011 SHEET 2 OF 2