

4

3

2

1


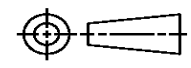
THIS DRAWING IS UNPUBLISHED. RELEASED FOR PUBLICATION
© COPYRIGHT ALL RIGHTS RESERVED.

LOC		DIST		REVISIONS			
P	LTR	DESCRIPTION		DATE	DWN	APVD	
	D2	ECR-16-001574		19FEB2016	RS	UG	

REPLACED BY OCEAN STYLE APPLICATOR PART NUMBER 2266139-1

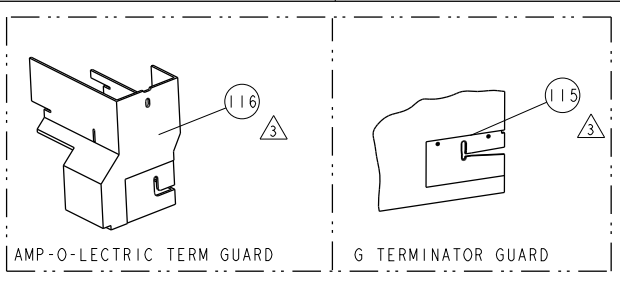
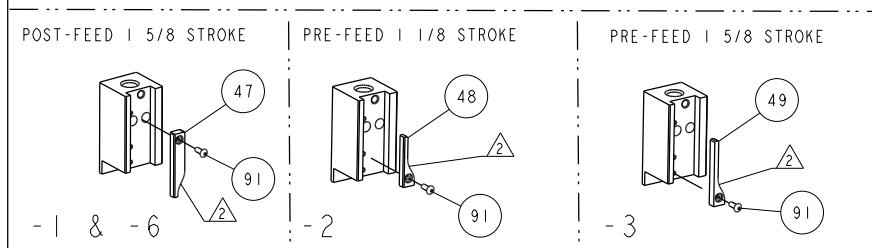
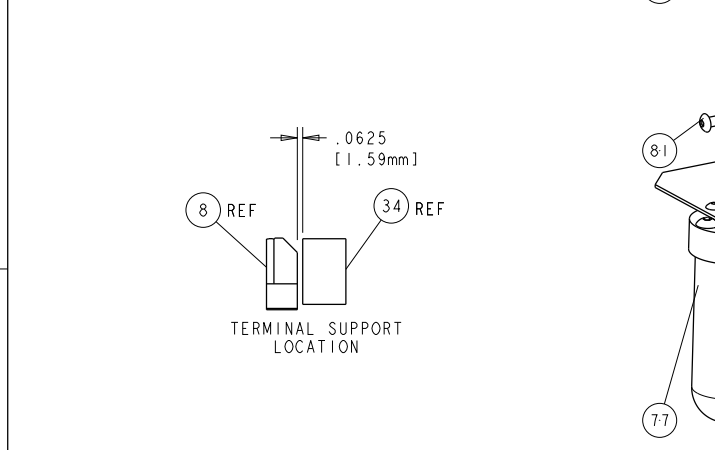
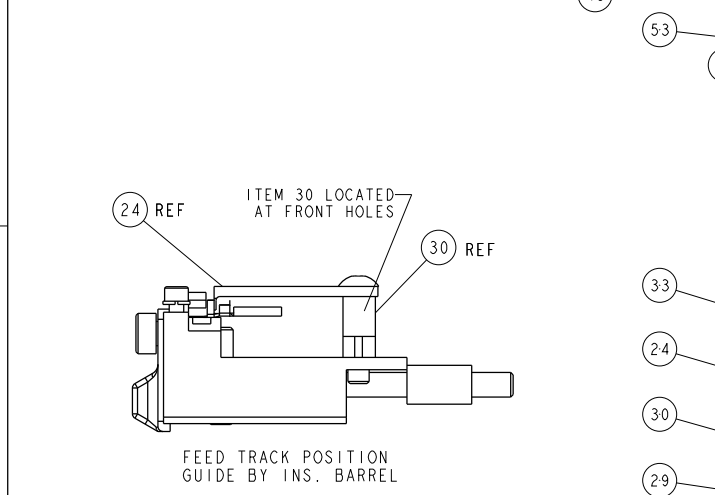
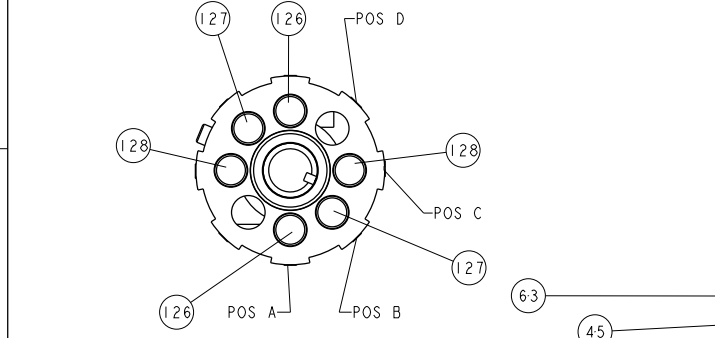
FOR REPLACEMENT PARTS FOR APPLICATOR 1852703
REFER TO ADDITIONAL PAGE(S). SPARE PARTS KIT (IF LISTED)
WILL REMAIN AVAILABLE.

THE REPLACEMENT OCEAN STYLE APPLICATOR HAS THE
SAME TERMINATOR/PRESS INTERFACE AS APPLICATOR
1852703

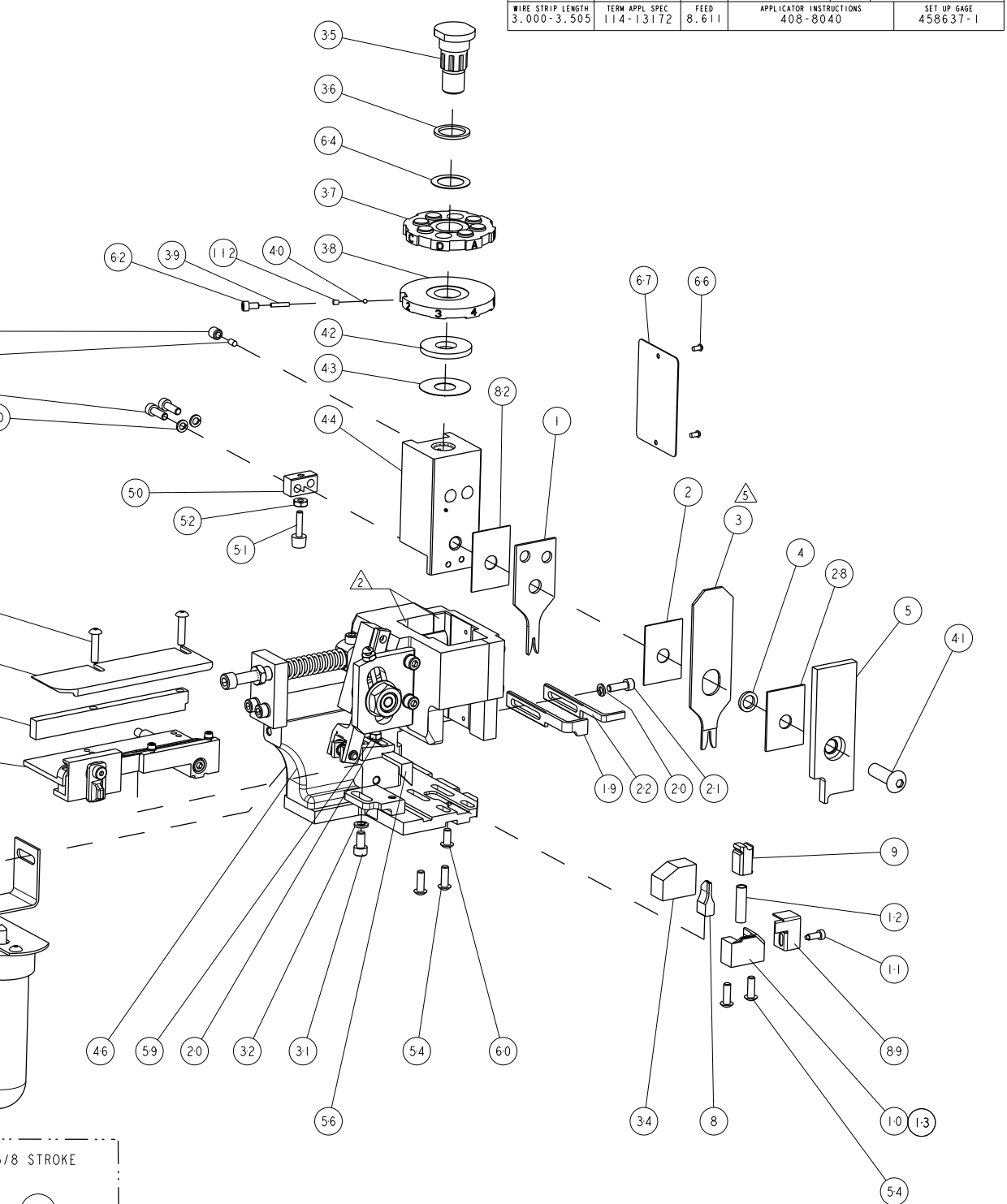
THIS DRAWING IS A CONTROLLED DOCUMENT.		DWN R.SHEN		
DIMENSIONS:		CHK LJ.ZHANG		
		APVD U.GUO	NAME SIDE FEED HDM APPLICATOR	
TOLERANCES UNLESS OTHERWISE SPECIFIED:		PRODUCT SPEC	APPLICATION SPEC	
0 PLC ± 1 PLC ± 2 PLC ± 3 PLC ± 4 PLC ± ANGLES ±		WEIGHT	SIZE A3	CAGE CODE
MATERIAL		DRAWING NO C-1852703		RESTRICTED TO
FINISH		CUSTOMER DRAWING		SCALE
		SHEET 1 OF 2		REV D2

PART NUMBER	REV	FIRST USED	POWER UNIT	FEED TYPE	DESCRIPTION
1852703-1	D	122500-1	LEADMAKER	POST FEED	CUTS CARRIER
1852703-2	D	565435-5	BENCH MODEL K	PRE FEED	CUTS CARRIER
1852703-3	D	354500-1	BENCH MODEL G	PRE FEED	CUTS CARRIER
1852703-6	D	122500-1	LEADMAKER	POST FEED	CONTINUOUS CARRIER
7-1852703-7	D	-	-	-	SPARE PARTS

- △ RECOMMENDED SPARE PARTS
- △ GREASE LIGHTLY
- △ GUARD MUST BE IN PLACE WHEN OPERATING APPLICATOR IN A BENCH MACHINE
- △ TERMINAL LUBRICANT IS REQUIRED.
- △ INSTALL ITEM 3 WITH STEP AS SHOWN FOR TERMINALS 2238018 AND 2238019.



TERMINAL NAME: SOCKET CONTACT, VAL-U-LOK			
TE PN	-	TE TERMINAL - TE CRIMP SPECS	
794957	-		
794958	-	PAD LTR	CRIMP HEIGHT
2238018	-	A	.89mm+ .05/- .05 [.035+ .002/- .002]
2238019	-	B	.84mm+ .05/- .05 [.033+ .002/- .002]
-	-	C	.76mm+ .05/- .05 [.030+ .002/- .002]
-	-	D	-
-	-	CRIMP	SIZE
-	-	WIRE	1.40mm [.055]
-	-	INSUL	1.78mm [.070]
WIRE STRIP LENGTH	TERM APPL SPEC	FEED	APPLICATOR INSTRUCTIONS
3.000-3.505	114-13172	8.611	408-8040
-	-	-	SET UP GAGE
-	-	-	458637-1



LOC	DIST	REV	DESCRIPTION	DATE	BY	APPV
A	66	D	ECR-14-008586	09JUN2014	YY	TE
		D1	ECR-14-009348	23JUN2014	KH	TE

QTY	UNIT	DESCRIPTION	ITEM NO					
2	2	2	2	354779-6	PIN, WIRE DISC, .3020	128		
2	2	2	2	9-354778-7	PIN, WIRE DISC, .2980	127		
2	2	2	2	9-354778-5	PIN, WIRE DISC, .2970	126		
REF	-	-	-	455749-1	GUARD WINDOW	116		
REF	-	-	-	679532-1	INSERT, GUARD	115		
1	1	1	1	690603-1	SPRING ASSIST AMP-O-MATOR APPLICATOR	112		
1	1	1	1	1-21002-7	SCR, BTN SKT HD CAP 6-32 X .375	91		
1	1	1	1	318563-1	GUARD, FRONT CHIP	89		
1	1	1	1	455888-5	SPACER, CRIMPER	82		
2	2	2	2	2-21002-6	SCR, BTN SKT HD CAP 10-32 X .375	81		
1	1	1	1	1-465184-0	LUBRICATOR ASSY	77		
1	1	1	1	4088040	SF APPL INST 408-8040	72		
1	1	1	1	217238-1	GENERAL INSTRUCTION PKG	71		
1	1	1	1	461264-1	PLATE, IDENTIFICATION	67		
2	2	2	2	21017-2	SCREW, DRIVE	66		
1	1	1	1	986950-1	WASHER, FLAT PRECISION	64		
1	1	1	1	21009-2	SCR, SET, SELF LOCKING 1/4-20 X .250	63		
1	1	1	1	23030-1	SCR, SKT HD CAP 6-32 X .25	62		
1	1	1	1	22733-8	SCR, BHSC, SELF-LOCKING, 8-32 X .375	60		
1	1	1	1	2-22603-0	SCR, HEX HD CAP 8-32 X .312	59		
1	1	1	1	458537-2	PAWL, FEED	56		
4	4	4	4	2-21002-2	SCR, BTN SKT HD CAP 8-32 X .500	54		
2	2	2	2	2-21000-7	SCR, SKT HD CAP 8-32 X .500	53		
1	1	1	1	21018-5	NUT, HEX, REG 6-32	52		
1	1	1	1	811242-2	BUMPER, HOLD DOWN	51		
1	1	1	1	690753-1	SPACER, TONKER	50		
1	1	1	1	690602-6	CAM, PRE FEED, 1 5/8	49		
1	1	1	1	690602-5	CAM, PRE FEED, 1 1/8	48		
1	1	1	1	690501-4	CAM, POST-FEED 1 5/8	47		
1	1	1	1	459456-1	APPL. BASIC SUB ASSY (SIDE WISE MQCA)	46		
1	1	1	1	690191-1	PLUG, NYLON	45		
1	1	1	1	455673-1	RAM, SIDE FEED	44		
1	1	1	1	690125-1	SHIM SUB-ASSY	43		
1	1	1	1	690124-9	WASHER, RAM (.125)	42		
1	1	1	1	7-21002-9	SCR, BTN SKT HD CAP 5/16-24 X 1.00	41		
1	1	1	1	23241-6	BALL, STEEL	40		
1	1	1	1	690170-1	SPRING, COMPRESSION	39		
1	1	1	1	690142-1	DISC, INSULATION	38		
1	1	1	1	354777-1	WIRE DISC, ASSEMBLY	37		
1	1	1	1	22480-5	SPRING, COMPRESSION	36		
1	1	1	1	690212-1	POST, RAM	35		
1	1	1	1	690786-3	TERMINAL SUPPORT	34		
2	2	2	2	2-21002-4	SCR, BTN SKT HD CAP 8-32 X .750	33		
1	1	1	1	21024-5	WASHER, SPRG LOCK, REG NO 10	32		
1	1	1	1	3-21000-4	SCR, SKT HD CAP 10-32 X .375	31		
1	1	1	1	1320908-4	SPACER, STRIP GUIDE	30		
1	1	1	1	1633091-1	ASSEMBLY, STRIP GUIDE	29		
1	1	1	1	1-455888-0	SPACER, CRIMPER	28		
1	1	1	1	1320928-1	STRIP GUIDE	24		
1	1	1	1	690472-2	STRIPPER	22		
1	1	1	1	2-21000-7	SCR, SKT HD CAP 8-32 X .500	21		
4	4	4	4	21024-4	WASHER, SPRG LOCK, REG NO 8	20		
1	1	1	1	691353-1	STRIPPER	19		
1	1	1	1	679625-1	SHEAR HOLDER, FRONT (NO CUT)	13		
1	1	1	1	3-22280-3	SPRING, COMPRESSION	12		
1	1	1	1	690461-1	STOP, SHEAR	11		
1	1	1	1	690459-1	SHEAR HOLDER, FRONT	10		
1	1	1	1	462006-1	FLOATING SHEAR, FRONT	9		
1	1	1	1	2-1633106-7	ANVIL, COMBINATION .055	8		
-	-	-	-	-	-	7		
-	-	-	-	-	-	6		
1	1	1	1	2-455889-0	DEPRESSOR, SHEAR	5		
1	1	1	1	238011-6	BLOCK, CRIMPER SPACER	4		
1	1	1	1	8-1633511-5	CRIMPER, INSULATION F	3		
1	1	1	1	455888-5	SPACER, CRIMPER	2		
1	1	1	1	5-456402-2	CRIMPER, WIRE PREMIUM	1		
-77	-6	-3	-2	-1	U/M	PART NO	DESCRIPTION	ITEM NO

DIMENSIONS: INCHES		TOLERANCES UNLESS OTHERWISE SPECIFIED:		FORM M HERR 19MAY2008		TE Connectivity	
0 PLC	±.01	1 PLC	±.01	T. ELBIN 19MAY2008		Harrisburg, PA 17105-3608	
2 PLC	±.01	3 PLC	±.001	APVD N. DEMING 19MAY2008		NAME	
4 PLC	±.0001	ANGLES		PRODUCT SPEC		SIDE FEED HDM APPLICATOR	
MATERIAL		FINISH		APPLICATION SPEC		RESTRICTED TO	
				SIZE CASE CODE DRAWING NO		A1 00779 C=1852703	
				WEIGHT		SCALE 3:5 SHEET 1 OF 1 REV D1	
				Customer Accessible Production Drawing		CUSTOMER VIEWABLE ASSEMBLY	