

SAFETY ORGANIZATION(S):

THIS FILTER HAS BEEN FORMALLY RECOGNIZED, CERTIFIED OR APPROVED BY THE LISTED AGENCY. THEREFORE, ALL TEST/REQUIREMENTS SPECIFIED IN THE LATEST REVISION OF THE FOLLOWING AGENCY STANDARDS HAVE BEEN MET:

- UL 1283
- CSA 22.2, NO. 0, 0.4, 8
- VDE 565-3

OPERATING SPECIFICATIONS:

LINE VOLTAGE/CURRENT:

- 20 AMP., 120/250 VAC
- 16 AMP./40°C, 250 VAC
- 50-60Hz
- 40°C

LINE FREQUENCY:

MAX. CASE RISE θ RATED CURRENT:

MAX. LEAKAGE CURRENT, EACH

LINE TO GROUND

OPERATING AMBIENT TEMP. RANGE:

IN AN AMBIENT, T_a , HIGHER THAN 40°C, THE MAXIMUM OPERATING CURRENT, I_o , IS AS FOLLOWS:

$$I_o = I_r \sqrt{\frac{85 - T_a}{45}}$$

RELIABILITY SPECIFICATIONS:

STORAGE TEMPERATURE:

HUMIDITY:

CURRENT OVERLOAD TEST:

6 TIMES RATED CURRENT FOR 8 SECONDS

TEST SPECIFICATIONS:

INDUCTANCE:

CAPACITANCE: (MEASURED @ 1 KHZ, 0.25 VAC MAX., 25°C \pm 1°C)

LINE TO GROUND:

LINE TO LINE:

DISCHARGE RESISTOR:

LINE/GROUND AND LINE/LINE

INSULATION RESISTANCE

(W/O DISCHARGE RESISTOR)

RECOMMENDED RECEIVING INSPECTION HIPOT:

LINES TO GROUND:

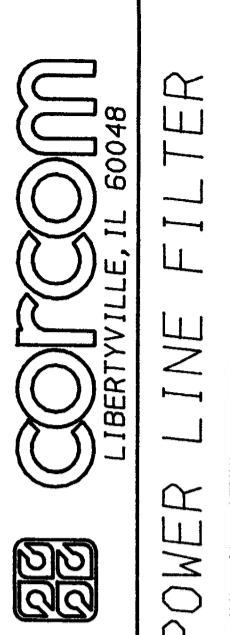
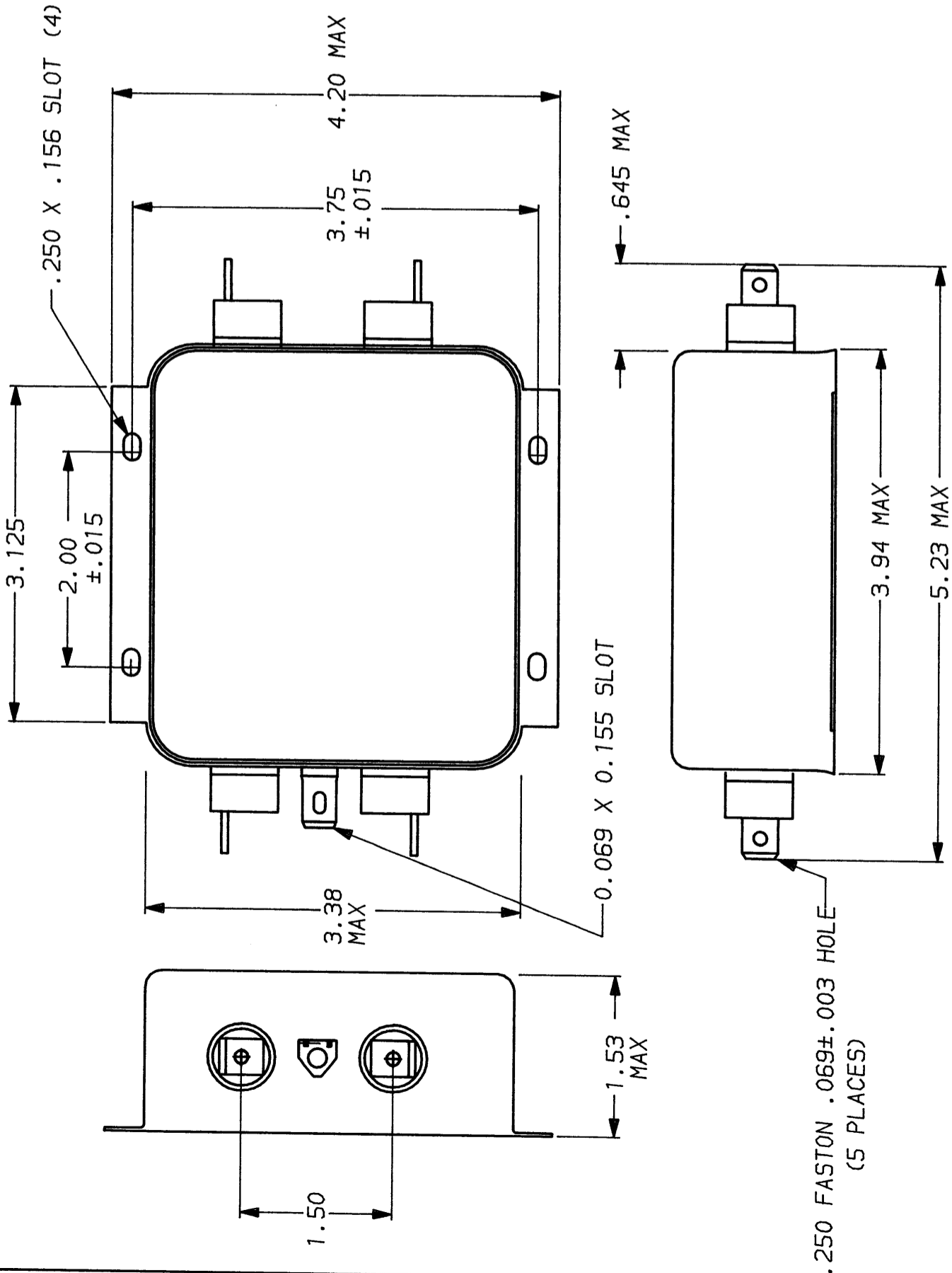
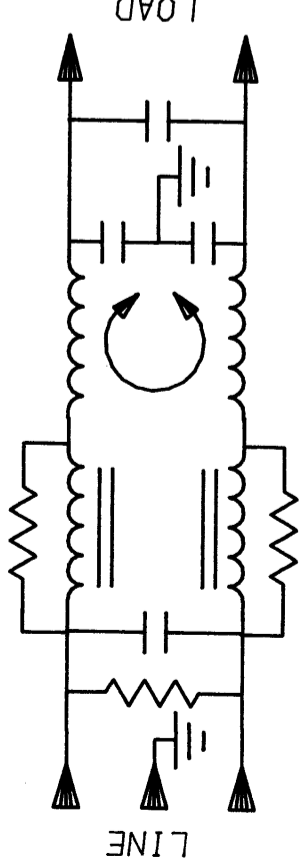
LINE TO LINE:

FILTER APPROVAL:

THE BEST WAY TO SELECT AND QUALIFY A FILTER IS FOR YOUR ENGINEERING TO TEST THE UNIT IN YOUR EQUIPMENT.

50 Ω - 50 Ω (MINIMUM)		INSERTION LOSS				
FREQUENCY MHZ	15	5	10	20	30	
COMMON dB	15	30	38	32	43	40
DIFF. dB	40	65	65	65	50	48

This document is proprietary to CORCOM INC. and is not to be reproduced nor used for manufacturing purposes except on CORCOM's order or prior written consent.



POWER LINE FILTER

SCALE	DATE	DRG. NO.	REV.
NTS	9-12-89		
DRW. BY	ORIGINATOR		
TDL	CW		

FINISH: AS SUPPLIED

AS SUPPLIED

20VS1.07