

MATERIALS AND FINISHES

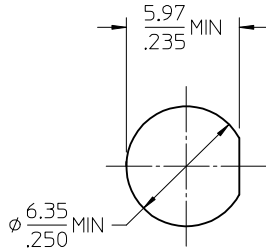
BODY, JAM NUT, LOCKWASHER: SEE TABLE

CENTER CONTACT: BERYLLIUM COPPER
PLATED GOLD

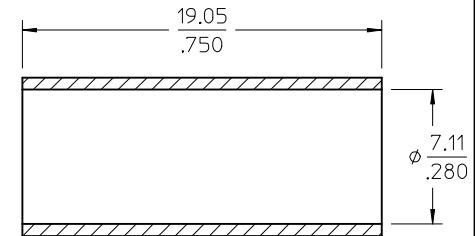
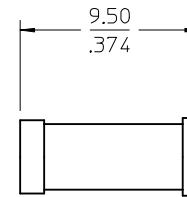
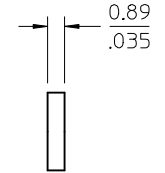
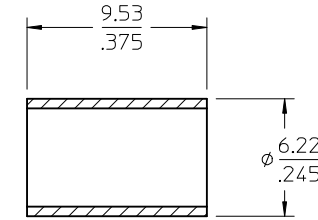
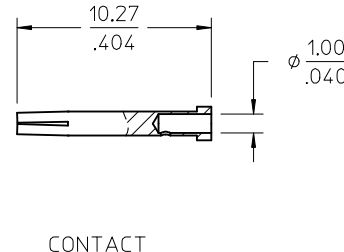
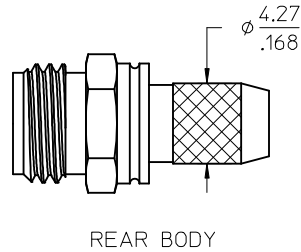
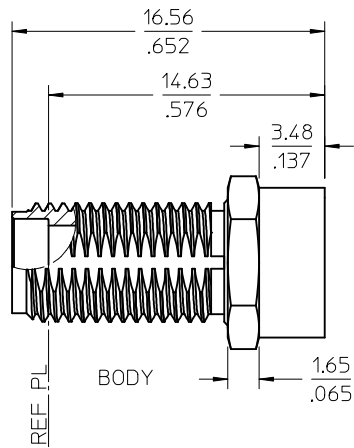
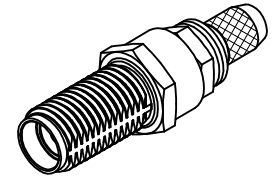
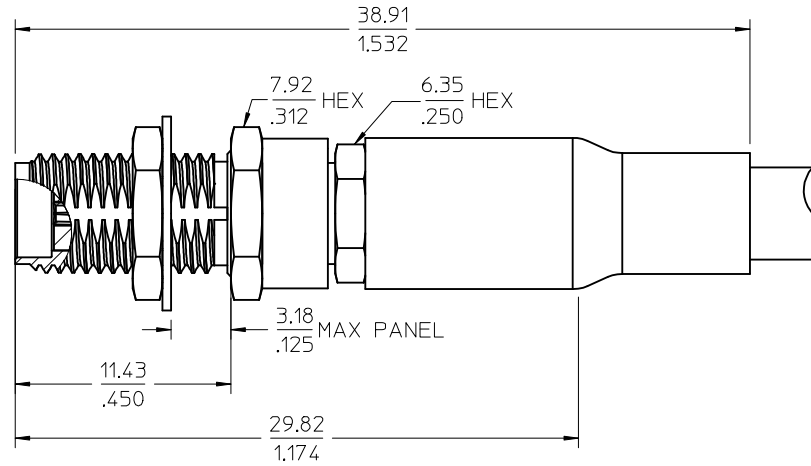
CRIMP TUBE: BRASS
PLATED NICKEL

INSULATOR: TEFLON

SHRINK TUBE: VERSAFIT OR EQUIVALENT



RECOMMENDED MOUNTING HOLE



73251-0103	73251-0101 BY TRAY (20 CAV.)				
73251-0102	73251-0100 BY TRAY (20 CAV.)				
73251-0101	BRASS	NICKEL	PHOSPHOR BRONZE	NICKEL	TRAY (54 CAV.)
73251-0100	STAINLESS STEEL	PASSIVATED	STAINLESS STEEL	PASSIVATED	TRAY (54 CAV.)
PART NO.	BODY & JAM NUT		LOCKWASHER		PACKAGING

ES-89675-1550	CABLE ASSY INSTRUCTION
PS-89675-1160	ELEC/MECH PERFORMANCE
MIL-STD-348A, FIG. 310.2	INTERFACE
SPECIFICATION	DESCRIPTION

CHGADDED -0103 & PACKAGING SHEET PER PDR15112127

EC NO: URF2016-0476 2015/12/01

DRWNR: YEH 2015/12/01

CHKD: CHENG

APPR: YCHENG 2015/12/31

DESCRIPTION

QUALITY SYMBOLS

GENERAL TOLERANCES (UNLESS SPECIFIED)

	mm	INCH
4 PLACES ±	---	± ---
3 PLACES ±	---	± ---
2 PLACES ±	---	± ---
1 PLACE ±	---	± ---
0 PLACE ±	±	±

ANGULAR ± 2°

DRAFT WHERE APPLICABLE MUST REMAIN WITHIN DIMENSIONS

REV A6

DIMENSION STYLE: MM/IN

SCALE: 5:1

DESIGN UNITS: METRIC

THIRD ANGLE PROJECTION

DRAWN BY: GMH DATE: 1997/11/07

CHECKED BY: DHG DATE: 1997/11/07

APPROVED BY: GMH DATE: 1997/11/07

TITLE: SMA JACK BLKHD STR CLAMP RG58/RG141 50 OHMS SMA-JC

molex

MATERIAL NO. SEE TABLE

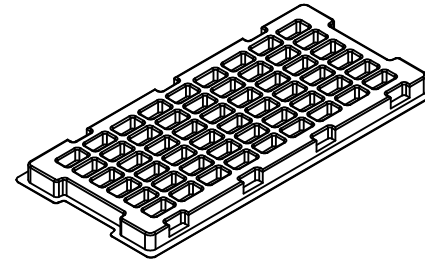
DOCUMENT NO. SD-73251-010

SHEET NO. 1 OF 3

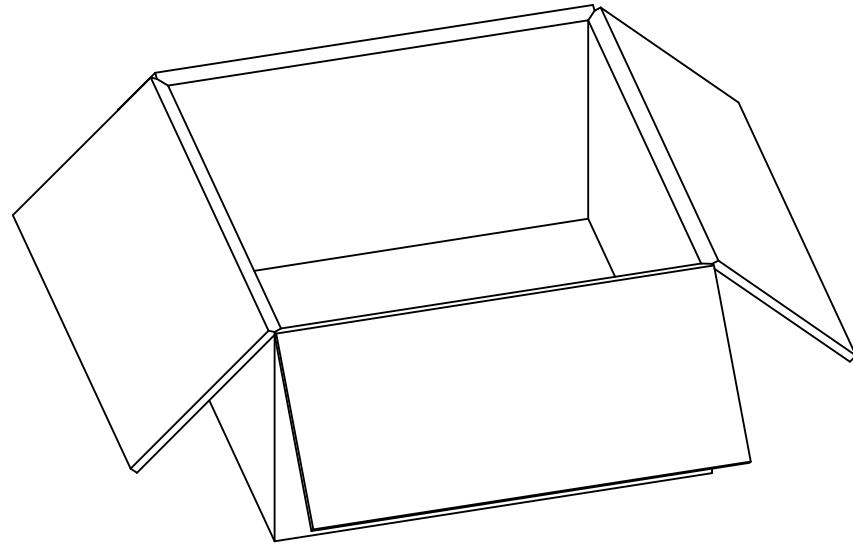
THIS DRAWING CONTAINS INFORMATION THAT IS PROPRIETARY TO MOLEX INCORPORATED AND SHOULD NOT BE USED WITHOUT WRITTEN PERMISSION



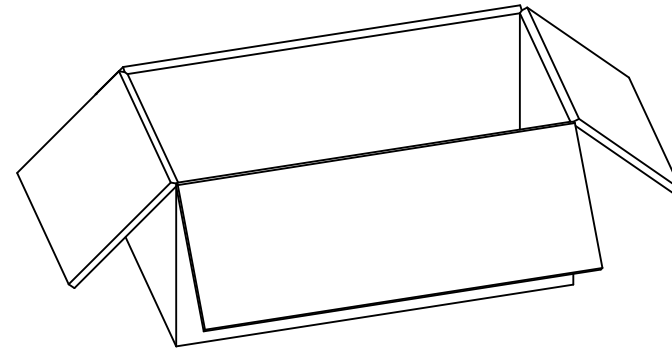
P/N: 73251-0100 / 73251-0101



54 SETS PER TRAY
P/N: 89707-0220



1080 SETS PER OUTER
CARTON BOX
P/N: 96708-0005



540 SETS PER INNER
CARTON BOX
P/N: 96707-0001

CHG:SEE SHEET 1
 EC NO: URF2016-0476
 DRAWN:YEH 2015/12/01
 CHKD:
 APPR:YCHENG 2015/12/31

REV	DESCRIPTION

QUALITY SYMBOLS
 ▽=0
 ▽=0
 ▽=0

GENERAL TOLERANCES (UNLESS SPECIFIED)

PLACES	mm	INCH
4 PLACES	± ---	± ---
3 PLACES	± ---	± ---
2 PLACES	± ---	± ---
1 PLACE	± ---	± ---
0 PLACE	±	±

ANGULAR ± 2 °

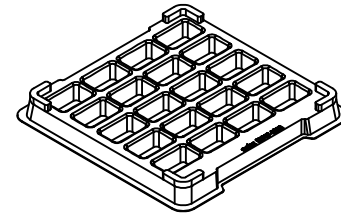
DRAFT WHERE APPLICABLE MUST REMAIN WITHIN DIMENSIONS

DIMENSION STYLE	
MM/IN	
DRAWN BY	DATE
GMH	1997/11/07
CHECKED BY	DATE
DHG	1997/11/07
APPROVED BY	DATE
GMH	1997/11/07
MATERIAL NO.	

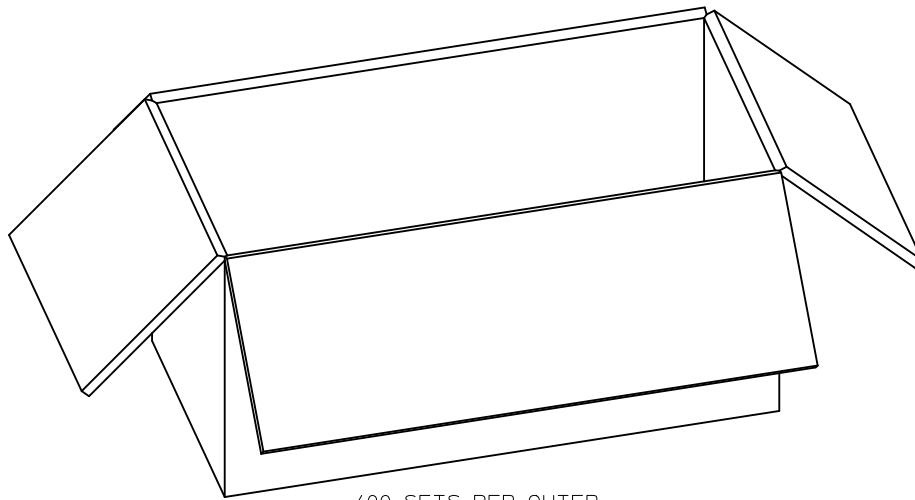
SCALE	DESIGN UNITS	THIRD ANGLE PROJECTION
1.5:1	METRIC	
TITLE		
SMA JACK BLKHD STR CLAMP RG58/RG141 50 OHMS SMA-JC		
molex		
DOCUMENT NO.		SHEET NO.
SD-73251-010		2 OF 3
THIS DRAWING CONTAINS INFORMATION THAT IS PROPRIETARY TO MOLEX INCORPORATED AND SHOULD NOT BE USED WITHOUT WRITTEN PERMISSION		



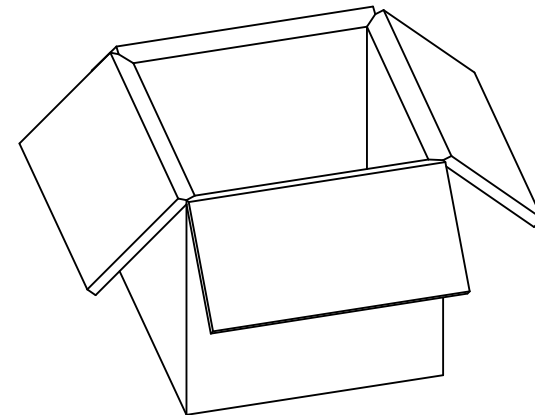
P/N: 73251-0102 / 73251-0103



20 SETS PER TRAY
P/N: 89707-0308



400 SETS PER OUTER
CARTON BOX
P/N: 96707-0002



200 SETS PER INNER
CARTON BOX
P/N: 96707-0005

CHG:SEE SHEET 1
EC NO: URF2016-0476
DRAWN:YEH 2015/12/01
CHKD:
APPR:YCHENG 2015/12/31

REV A6

QUALITY SYMBOLS
▽=0
▽=0
▽=0

DESCRIPTION

GENERAL TOLERANCES (UNLESS SPECIFIED)

	mm	INCH
4 PLACES	± ---	± ---
3 PLACES	± ---	± ---
2 PLACES	± ---	± ---
1 PLACE	± ---	± ---
0 PLACE	±	±

ANGULAR ± 2 °

DRAFT WHERE APPLICABLE MUST REMAIN WITHIN DIMENSIONS

DIMENSION STYLE
MM/IN

DRAWN BY DATE
GMH 1997/11/07

CHECKED BY DATE
DHG 1997/11/07

APPROVED BY DATE
GMH 1997/11/07

MATERIAL NO.
SEE TABLE

SCALE
1.5:1

DESIGN UNITS
METRIC

THIRD ANGLE PROJECTION

TITLE
SMA JACK BLKHD STR CLAMP
RG58/RG141 50 OHMS
SMA-JC

molex

DOCUMENT NO.
SD-73251-010

SHEET NO.
3 OF 3

THIS DRAWING CONTAINS INFORMATION THAT IS PROPRIETARY TO MOLEX INCORPORATED AND SHOULD NOT BE USED WITHOUT WRITTEN PERMISSION