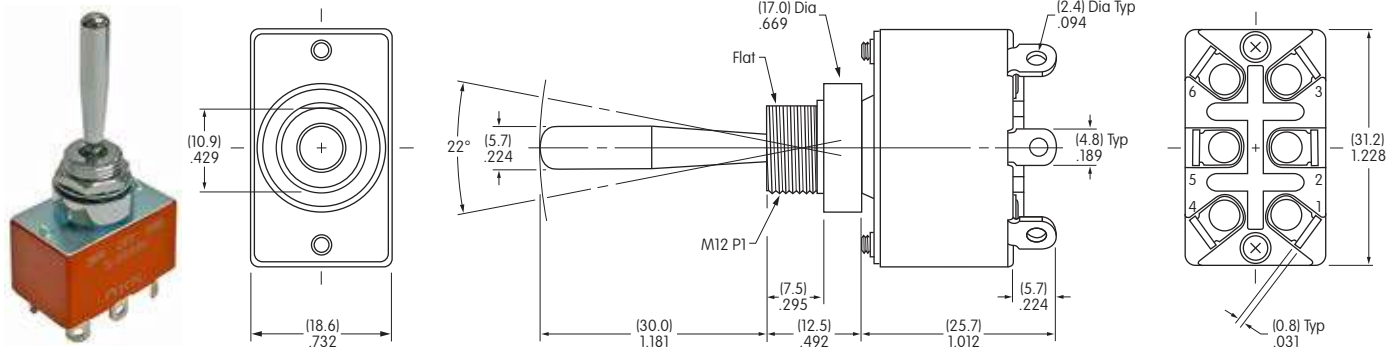


S28AW30

Bushing Mount • Double Pole • Solder Lug

Dimensions in mm/inch

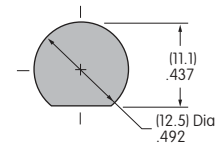


BASE SWITCH

PANEL CUTOUT

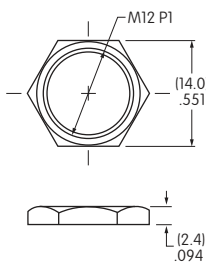
Part Number  
S28AW

Maximum Panel Thickness:  
.158" (4.0mm) Maximum



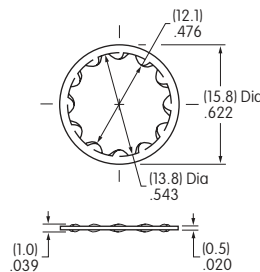
STANDARD HARDWARE

Hexagon  
Face Nut



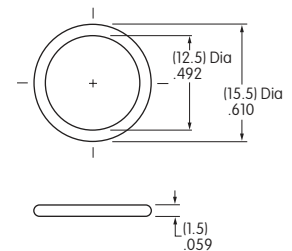
1 included with each switch  
Material: Brass with tin-cobalt alloy plating

Internal  
Tooth Lockwasher



1 included with each switch  
Material: Phosphor bronze with chrome plating

AT537  
O-ring



1 included with each switch  
Material: Nitrile butadiene rubber

POLE & CIRCUIT

Pole	Model	Toggle Position/ Connected Terminals ( ) = Momentary			Throw & Schematics
		Down	Center	Up	
DP	S28AW	(ON) 	OFF 	(ON) 	Note: Terminal numbers are actually on the switch. 

CONTACT MATERIALS & RATINGS

Silver over Silver

Power Level

15A @ 125V AC & 6A @ 250V AC

# Base Switch Specifications

## Electrical Capacity (Resistive & Inductive Load)

**Power Level:** 15A @ 125V AC & 6A @ 250V AC; 20A @ 30V DC

## Other Ratings

**Contact Resistance:** 10 milliohms maximum  
**Insulation Resistance:** 1,000 megohms minimum @ 500V DC  
**Dielectric Strength:** 2,000V AC minimum for 1 minute minimum  
**Mechanical Life:** 30,000 operations minimum  
**Electrical Life:** 25,000 operations minimum  
**Angle of Throw:** 22°

## Materials & Finishes

**Toggle:** Brass with chrome plating  
**Bushing:** Brass with chrome plating  
**Case:** Phenolic resin  
**Case Cover:** Steel with zinc plating  
**Movable Contactor:** Copper with silver plating  
**Movable Contacts:** Silver alloy capped on copper with silver plating  
**Stationary Contacts:** Silver alloy capped on copper with silver plating  
**Terminals:** Brass with tin plating

## Environmental Data

**Operating Temperature Range:** -30°C through +70°C (-22°F through +158°F)  
**Front Panel Sealing:** IP67 of IEC 60529, dust tight & water protected during temporary immersion

## Installation

**Mounting Torque:** 1.47Nm (13 lb•in) for single nut  
**Soldering Time & Temperature:** Manual Soldering: 390°C maximum for 4 seconds maximum, 2 cycles