

# DM Series Miniature 2 Pole Power Rocker Switches



## Features/Benefits

- 3 AMPS to 10 AMPS
- Quick connect terminals
- Double pole in miniature size
- Recessed bracket available—prevents accidental actuation
- RoHS compliant

## Typical Applications

- Computers
- Appliances
- Electric tools

UL 61058-1



## Specifications

CONTACT RATING:

DM21, DM22:

GP (general purpose)

3 AMPS 125 VAC 50/60 Hz T85 10,000 cycles

2 AMPS 250 VAC 50/60 Hz T85 10,000 cycles

R (resistive)

3 AMPS 30 VDC T85 10,000 cycles

DM61, DM62:

GP (general purpose)

10 AMPS 125 VAC 50/60 Hz T85 10,000 cycles

5 AMPS 250 VAC 50/60 Hz T85 10,000 cycles

R (resistive)

10 AMPS 30 VDC T85 10,000 cycles

ELECTRICAL LIFE: 10,000 make-and-break cycles at full load.

INSULATION RESISTANCE:  $10^9 \Omega$  min.

DIELECTRIC STRENGTH: 1,000 Vrms min. @ sea level.

OPERATING TEMPERATURE: -20°C to +65°C

## Materials

HOUSING & ACTUATOR: 6/6 nylon (UL94V-2), black.

MOVABLE CONTACTS: DM2X Models: Copper, silver plated.

DM6X Models: Coin silver, silver plated.

STATIONARY CONTACTS & TERMINALS: Copper or brass, silver plated.

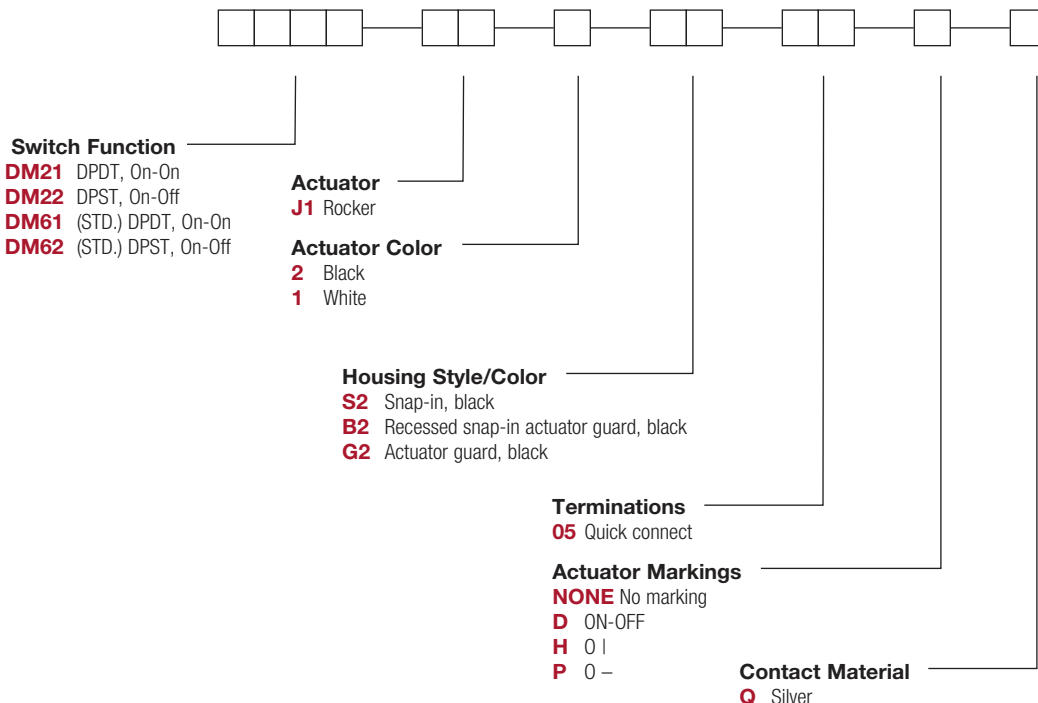
CONTACT SPRING: Music wire or stainless steel.

**NOTE:** Any models supplied with Q contact material are RoHS compliant.

**NOTE:** Specifications and materials listed above are for standard switches. For information on specific and custom switches, consult Customer Service Center.

## Build-A-Switch

To order, simply select desired option from each category and place in the appropriate box. Available options are shown and described on pages G-66 and G-69. For additional options not shown in catalog, consult Customer Service Center.



# DM Series Miniature 2 Pole Power Rocker Switches

## SWITCH FUNCTION



NO. POLES	MODEL NO.	AMP RATING*	SWITCH FUNCTION		CONNECTED TERMINALS		SCHEMATIC
			POS. 1	POS. 2	POS. 1	POS. 2	
DP	<b>DM22</b>	3	ON	OFF	1-1A, 2-2A	OPEN	
	<b>DM62</b>	10	ON	OFF	1-1A, 2-2A	OPEN	
	<b>DM21</b>	3	ON	ON	1-1A, 2-2A	1-1B, 2-2B	
	<b>DM61</b>	10	ON	ON	1-1A, 2-2A	1-1B, 2-2B	

**DPDT**

PART NUMBER SHOWN: DM21J1XS205Q

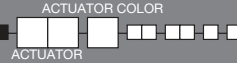
NOTES 1. ACTUATOR SHOWN IN POSITION 1-'ON' POSITION

RATINGS: See page G-65 for complete ratings.

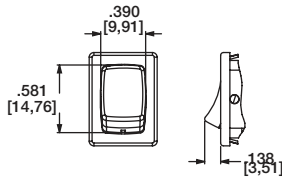


UL 61058-1 tested to 30C temperature rise @ 6,000 cycles.

## ACTUATOR



### J1 ROCKER



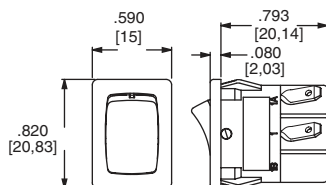
OPTION CODE	ACTUATOR COLOR
<b>2</b>	BLACK
<b>1</b>	WHITE

NOTE: Actuator finish: matte. Other colors available, consult Customer Service Center.

## HOUSING STYLE/COLOR

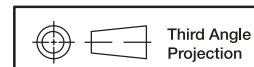
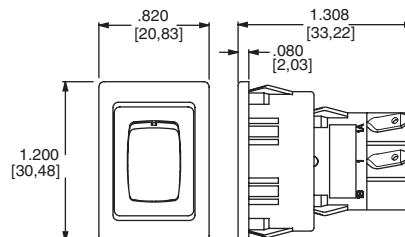


### S2 SNAP-IN, BLACK



NOTE: Housing finish: matte. Other colors available, consult Customer Service Center.

### B2 RECESSED SNAP-IN ACTUATOR GUARD, BLACK



Dimensions are shown: Inches (mm)  
Specifications and dimensions subject to change



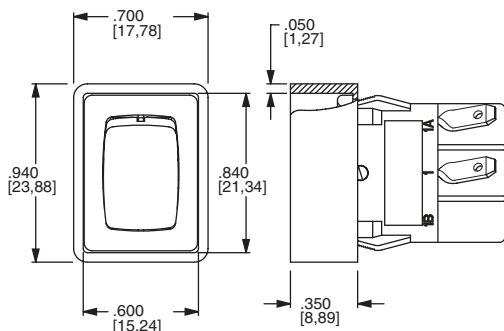
15 May 20



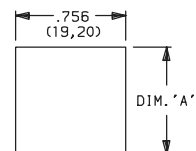
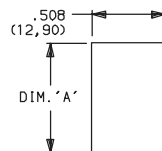
# DM Series Miniature 2 Pole Power Rocker Switches

## HOUSING STYLE/COLOR

**G2** ACTUATOR GUARD, BLACK



### PANEL MOUNTING



'S2' & 'G2' housing styles

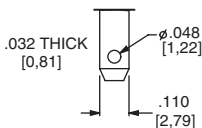
'B2' housing style

NOTE: Blank insert available for SP models only, see page H-76.

PANEL THICKNESS	DIM 'A' 'S2' & 'G2' HOUSING STYLES	DIM 'A' 'G2' OPTION SP MODELS ONLY	DIM 'A' 'B2' HOUSING STYLES
.030-.049 (0,76) (1,24)	.756 (19,20)	0.764 (19,41)	1.068 (27,13)
.049-.079 (1,24) (2,01)	.764 (19,41)	0.780 (19,81)	1.076 (27,33)
.079-.118 (2,01) (3,00)	.780 (19,81)	n/a	1.092 (27,74)

## TERMINATIONS

**05** QUICK CONNECT



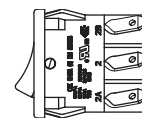
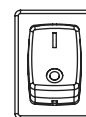
## ACTUATOR MARKINGS

**NONE** NO MARKING

**D** ON-OFF

**H** O I

**P** O -



NOTE: Orientation of actuator markings and terminals.

'D' & 'P' marking options: marking color white, standard for all actuator colors except white actuators. Black marking color standard for white actuators. Consult Customer Service Center for other available marking colors.

## CONTACT MATERIAL

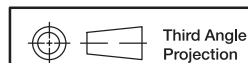
OPTION CODE	CONTACT AND TERMINAL MATERIAL	RATINGS	
<b>Q</b>	SILVER 1,2	DM21, DM22:	GP (general purpose) 3 AMPS 125 VAC 50/60 Hz T85 10,000 cycles
			2 AMPS 250 VAC 50/60 Hz T85 10,000 cycles
		DM61, DM62:	R (resistive) 3 AMPS 30 VDC T85 10,000 cycles
			GP (general purpose) 10 AMPS 125 VAC 50/60 Hz T85 10,000 cycles
			5 AMPS 250 VAC 50/60 Hz T85 10,000 cycles
			10 AMPS 30 VDC T85 10,000 cycles

\* Note: See Technical Data section of this catalog for RoHS compliant and compatible definitions and specifications.

<sup>1</sup> MOVABLE CONTACT: DM2X Models: Copper, silver plated.  
DM6X Models: Coin silver, silver plated.

<sup>2</sup> STATIONARY CONTACTS & TERMINALS: Copper or brass, silver plated.

NOTE: Any models supplied with Q contact material are RoHS compliant.



Dimensions are shown: Inches (mm)  
Specifications and dimensions subject to change

Rocker

G

**C&K**

15 May 20

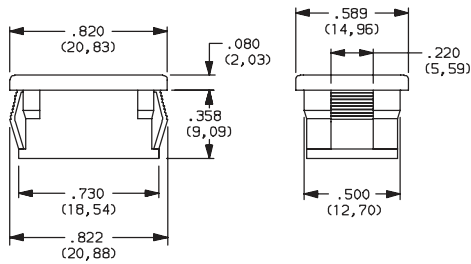
G-68

www.ckswitches.com

# DM Series Miniature 2 Pole Power Rocker Switches

## AVAILABLE HARDWARE

### Insert



**PART NO.**  
**057190200**

Material: Nylon 6/6  
Finish: Matte

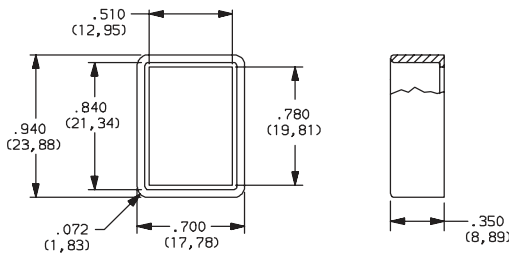
### Recessed Actuator Guard



**PART NO.**  
**599D02000**

Material: 6/6 Nylon  
Finish: Matte

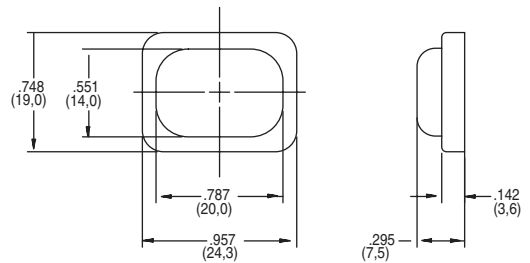
### Actuator Guard



**PART NO.**  
**104C22000**

Material: PBT thermoplastic  
Finish: Matte

**PART NO.**  
**216C00000** IP54 SPLASH PROOF RUBBER BOOT



# DM Series Miniature Illuminated Power Rocker Switches



## Features/Benefits

- 3 AMPS to 10 AMPS
- Illuminated LED
- Positive detent
- RoHS compliant

## Typical Applications

- Instrumentation
- Industrial
- Office machines



## Specifications

CONTACT RATING:

DM14 and DM24 Models:

GP (general purpose)

3 AMPS @ 125 V AC; 2 AMPS @ 250 V AC.

R (resistive)

3 AMPS 30 VDC 10,000 cycles

DM54 and DM64 Models:

GP (general purpose)

10 AMPS @ 125 V AC; 5 AMPS @ 250 V AC (UL).

R (resistive)

10 AMPS 30 VDC 10,000 cycles

ELECTRICAL LIFE: 10,000 make-and-break cycles at full load.

INSULATION RESISTANCE:  $10^9 \Omega$  min.

DIELECTRIC STRENGTH: 1,000 Vrms min. @ sea level.

## Materials

HOUSING: 6/6 nylon (UL94V-2), black.

ACTUATOR: 6/6 nylon (UL94V-2), black.

MOVABLE CONTACTS: DM14 and DM24 Models: Copper, silver plated. DM54 and DM64 Models: Coin silver, silver plated.

STATIONARY CONTACTS & TERMINALS: Copper or brass, silver plated.

LED TERMINALS: Brass, unplated.

CONTACT SPRING: Music wire or stainless steel.

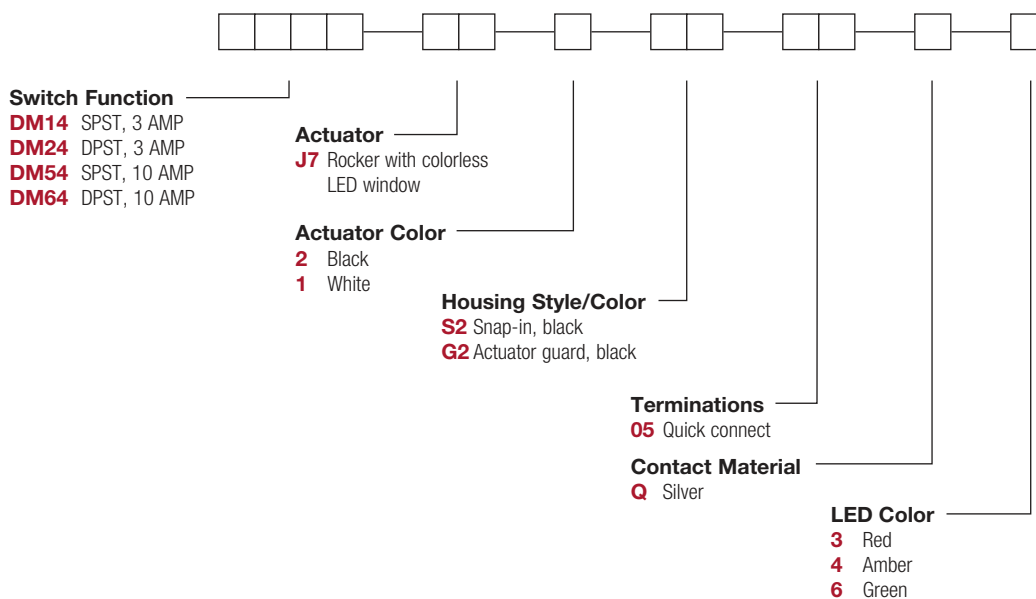
OPERATING TEMPERATURE: -20°C to +65°C

**NOTE:** Any models supplied with Q contact material are RoHS compliant.

**NOTE:** Specification and materials listed above are for standard switches. For information on specific and custom switches, consult Customer Service Center.

## Build-A-Switch

To order, simply select desired option from each category and place in the appropriate box. Available options are shown and described on pages G-70 and G-73. For additional options not shown in catalog, consult Customer Service Center.



# DM Series Miniature Illuminated Power Rocker Switches

## SWITCH FUNCTION



NO. POLES	MODEL NO.	AMP RATING*	SWITCH FUNCTION		CONNECTED TERMINALS		SCHEMATIC
			POS. 1	POS. 2	POS. 1	POS. 2	
SP	<b>DM14</b>	3	ON	OFF	1-1A	OPEN	
	<b>DM54</b>	10					
DP	<b>DM24</b>	3	ON	OFF	1-1A, 2-2A	OPEN	
	<b>DM64</b>	10					
<b>DPDT</b>  Actuator shown in pos. 1 - 'ON' position. SPST MODELS (DM14 & DM54) OMIT TERMINALS 2 & 2A. Part number shown: DM24J72S205Q3 TERM. NOS. FOR REFERENCE ONLY							

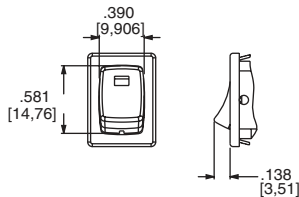
\* RATINGS: see page G-69.



## ACTUATOR



**J7** ROCKER WITH COLORLESS LED WINDOW



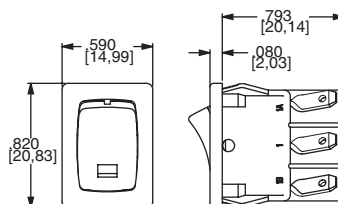
OPTION CODE	ACTUATOR COLOR
<b>2</b>	BLACK
<b>1</b>	WHITE

**NOTE:** Other colors available, consult Customer Service Center.

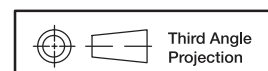
## HOUSING STYLE/COLOR



**S2** SNAP-IN, BLACK



**NOTE:** Housing finish: matte. Other colors available, consult Customer Service Center.



Dimensions are shown: Inches (mm)  
Specifications and dimensions subject to change



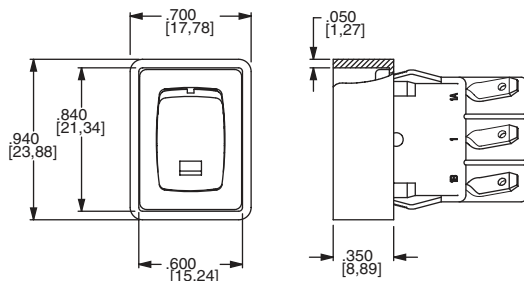
15 May 20



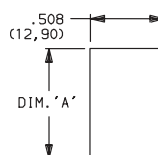
# DM Series Miniature Illuminated Power Rocker Switches

## HOUSING STYLE/COLOR

**G2** ACTUATOR GUARD, BLACK



### PANEL MOUNTING



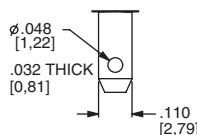
'S2' & 'G2' housing style

**NOTE:** Blank insert available for SP models only, see page H-80.

PANEL THICKNESS	DIM 'A' 'S2' & 'G2' HOUSING STYLES	DIM 'A' with 'G2' option SP MODELS ONLY
.030-.049 (0,76) (1,24)	0.756 (19,20)	0.764 (19,41)
.049-.079 (1,24) (2,01)	0.764 (19,41)	0.780 (19,81)
.079-.118 (2,01) (3,00)	.780 (19,81)	n/a

## TERMINATIONS

**05** QUICK CONNECT



## CONTACT MATERIAL

OPTION CODE	CONTACT AND TERMINAL MATERIAL	RATINGS			
<b>Q</b>	SILVER 1,2	POWER	DM14, DM24:	GP (general purpose)	3 AMPS @ 125 V AC; 2 AMPS @ 250 V AC.
				R (resistive)	3 AMPS 30 VDC 10,000 cycles
			DM54, DM64:	GP (general purpose)	10 AMPS @ 125 V AC; 5 AMPS @ 250 V AC.
				R (resistive)	10 AMPS 30 VDC 10,000 cycles

\* Note: See Technical Data section of this catalog for RoHS compliant and compatible definitions and specifications.

<sup>1</sup> MOVABLE CONTACTS: DM14 and DM24 models: Copper, silver plated.  
DM54 and DM64 models: Coin silver, silver plated.

<sup>2</sup> STATIONARY CONTACTS & TERMINALS: Copper or brass, silver plated.

**NOTE:** Any models supplied with Q contact material are RoHS compliant.



## LED COLOR

OPTION CODE	LED COLOR	FORWARD V <sub>FD</sub>	CURRENT I <sub>LED</sub>	REVERSE V <sub>R</sub>	INTENSITY M <sub>CD</sub>	RECOMMENDED RESISTOR @ VOLTAGE		
						5V	12V	24V
<b>3</b>	Red	2.1	10	4V	1.6 typ.	270	1K	2.2K
<b>4</b>	Amber	2.2	20	4V	2.5 typ.	150	510	1.2K
<b>6</b>	Green	2.1	20	4V	2.0 typ.	150	510	1.2K



Dimensions are shown: Inches (mm)  
Specifications and dimensions subject to change

Rocker

**C&K**

15 May 20

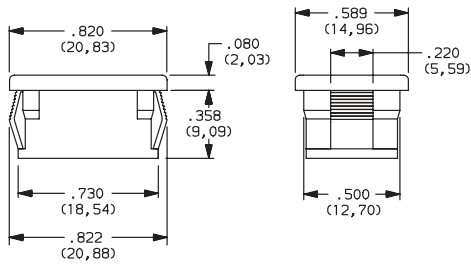
G-72

www.ckswitches.com

# DM Series Miniature Illuminated Power Rocker Switches

## AVAILABLE HARDWARE

### Blank Insert



**PART NO.**  
**057190200**

Material: Zinc nylon 6/6  
Finish: Matte

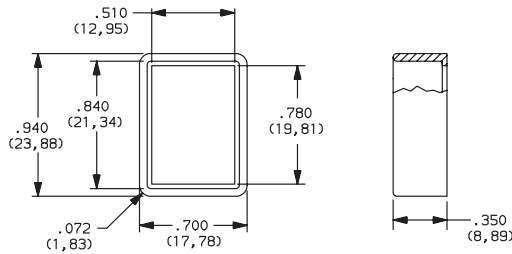
### Recessed Bracket



**PART NO.**  
**599D02000**

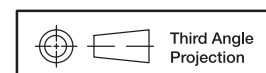
Material: 6/6 Nylon  
Finish: Matte

### Actuator Guard



**PART NO.**  
**104C22000**

Material: PBT thermoplastic  
Finish: Matte



Dimensions are shown: Inches (mm)  
Specifications and dimensions subject to change