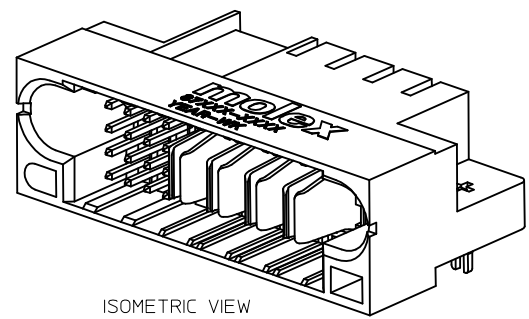
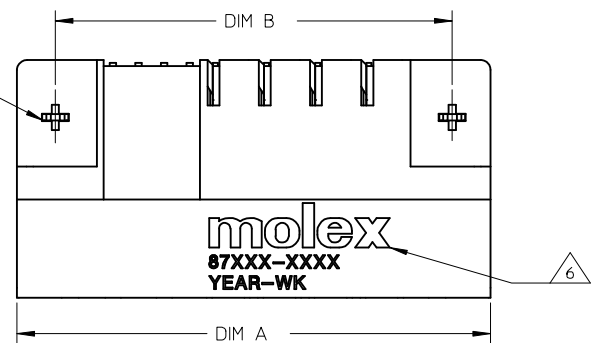


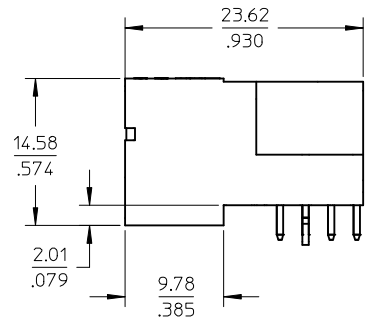
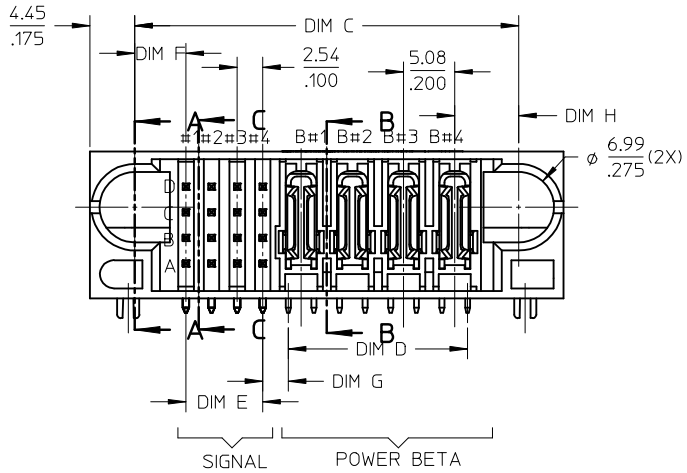
SCREWMOUNT OPTION  
(SEE TABLE/SHEET 3)

REFER TO OPTION AT  
TABLE/SHEET 3

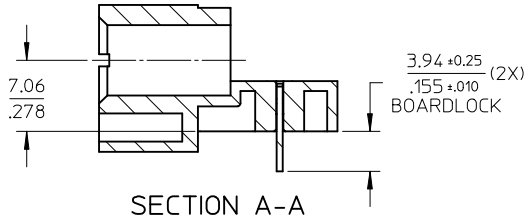


ISOMETRIC VIEW

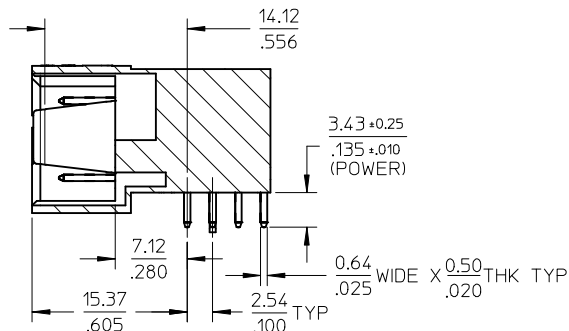
- NOTES:
- MATERIALS: HOUSING - LCP, GLASS FILLED, UL94V-0,  
COLOUR: BLACK  
POWER PINS - COPPER ALLOY  
SIGNAL PINS - COPPER ALLOY  
BOARDLOCK - COPPER ALLOY
  - FINISHES: POWER & SIGNAL PINS:  
SELECTIVE GOLD IN CONTACT AREA.  
THICKNESS= 0.76 MICROMETER/ 30 MICROINCH MINIMUM  
SELECTIVE TIN ALLOY IN THE PC TAIL AREA  
THICKNESS= 2.54 MICROMETER/100 MICROINCH MINIMUM  
NICKEL OVERALL.
  - PRODUCT SPECIFICATION: PS-87805-006.
  - SEE SHEET 2 FOR RECOMMENDED PCB LAYOUT AND THICKNESS.
  - COMPONENT STAY AWAY ZONE FROM CONNECTOR.
  - MANUFACTURER LOGO, PART NUMBER AND YEAR-WEEK CODE.
  - PCB NOTE FOR DIAMETER 1.02/.040 PLATED HOLE.  
- DRILLED HOLE SIZE IS 1.151/.0453.  
- PLATED WITH 0.007/.0003 MINIMUM TIN OVER  
0.03/.001 TO 0.08/.003 COPPER PLATING TO ACHIEVE  
1.02±0.08/.040±.003 HOLE.
  - 16 SIGNAL-4P BETA CONFIGURATION IS SHOWN FOR ILLUSTRATION.
  - FOR SCREWMOUNT OPTION, THE DRILLED HOLE DIAMETER IS  
4.01MM/.158".



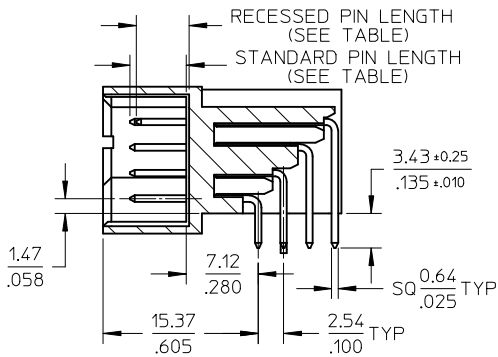
ADD P/N(87807-2011) EC NO: S2009-0688 DRWN: YMC HONG 2009/03/27 CHKD: ATSEE 2009/03/30 APPR: MLONG 2009/03/30	QUALITY SYMBOLS ▽=0 ◻=0	GENERAL TOLERANCES (UNLESS SPECIFIED)		DIMENSION STYLE MM/IN		SCALE NTS	DESIGN UNITS METRIC	THIRD ANGLE PROJECTION		
			mm	INCH	DRAWN BY NRVITAP	DATE 2004/03/26	TITLE POWER CONNECTOR HEADER 5.08MM VERSION S-P(B), R/A, T/H			
		4 PLACES	± ---	± ---	CHECKED BY BHLOW	DATE 2004/04/14	MOLEX INCORPORATED DOCUMENT NO. SD-87807-001 SHEET NO. 1 OF 3			
		3 PLACES	± ---	± .010	APPROVED BY SCLOW	DATE 2004/04/19				
2 PLACES	± 0.25	± ---	MATERIAL NO.		SIZE SEE TABLE					
1 PLACE	± ---	± ---	DRAFT WHERE APPLICABLE MUST REMAIN WITHIN DIMENSIONS		THIS DRAWING CONTAINS INFORMATION THAT IS PROPRIETARY TO MOLEX INCORPORATED AND SHOULD NOT BE USED WITHOUT WRITTEN PERMISSION					



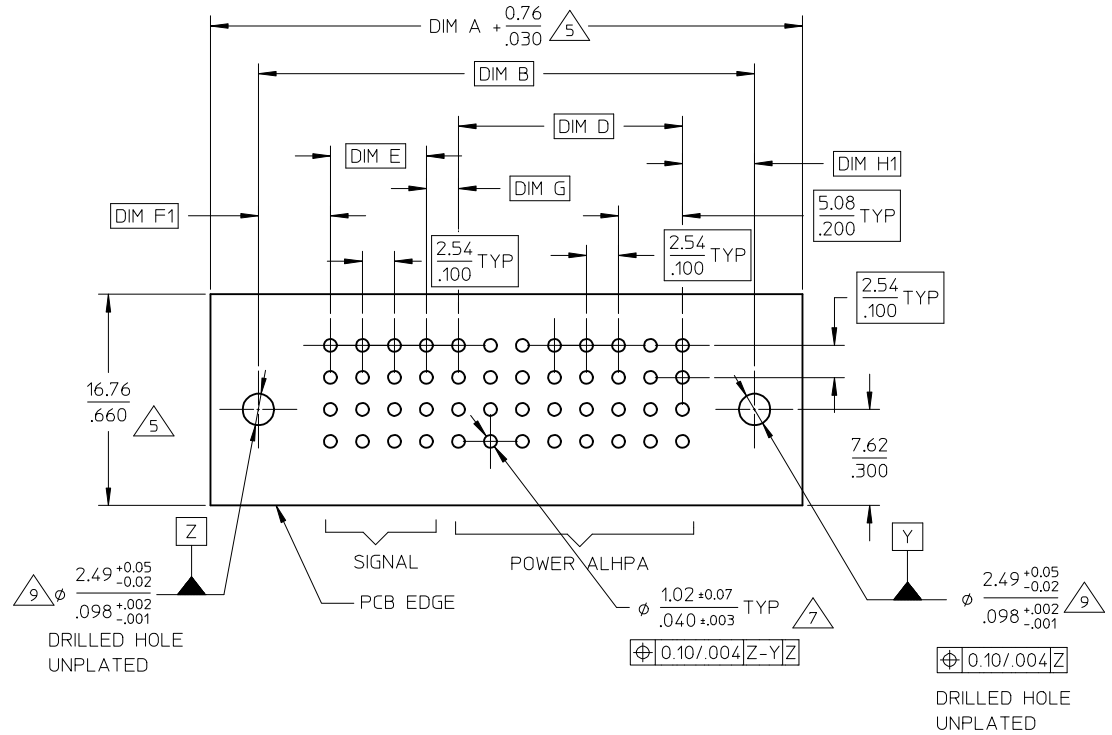
SECTION A-A



SECTION B-B



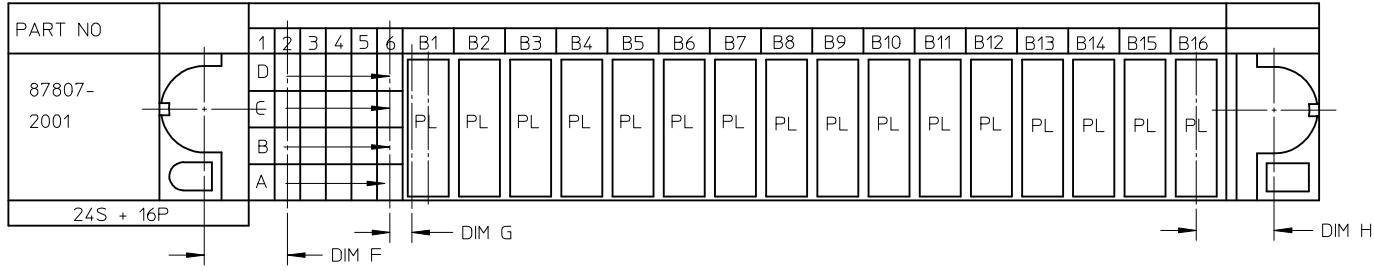
SECTION C-C



RECOMMENDED PCB LAYOUT  
PCB THICKNESS 1.57mm/0.062"

ADD P/N(87807-2011) EC NO: S2009-0688 DRWN:YMCHEONG 2009/03/27 CHKD:ATSEE 2009/03/30 APPR:MLONG 2009/03/30	QUALITY SYMBOLS ▽=0 ◻=0	GENERAL TOLERANCES (UNLESS SPECIFIED)		DIMENSION STYLE MM/IN		SCALE NTS	DESIGN UNITS METRIC	THIRD ANGLE PROJECTION		
			mm	INCH	DRAWN BY	DATE	TITLE POWER CONNECTOR HEADER 5.08MM VERSION S-P(B), R/A, T/H			
		4 PLACES	± ---	± ---	NRVITTAP	2004/03/26	MOLEX INCORPORATED			
		3 PLACES	± ---	± .010	CHECKED BY	DATE	DOCUMENT NO. SD-87807-001			
	± 0.25	± ---	BHLOW	2004/04/14	SHEET NO. 2 OF 3					
	± ---	± ---	APPROVED BY	DATE	THIS DRAWING CONTAINS INFORMATION THAT IS PROPRIETARY TO MOLEX INCORPORATED AND SHOULD NOT BE USED WITHOUT WRITTEN PERMISSION					
	ANGULAR ± 3 °		SCLOW	2004/04/19						
	DRAFT WHERE APPLICABLE MUST REMAIN WITHIN DIMENSIONS		SEE TABLE							
	SIZE	A3								

PART NUMBER	P-S-P CONFIGURATION		DIM A	DIM B	DIM C	DIM D	DIM E	STANDARD SIGNAL PIN LENGTH	RECESSED SIGNAL PIN		PACKAGING	DIM F	DIM F1	DIM G	DIM H	DIM H1	BOARDLOCK OR SCREWMOUNT OPTION
	SIGNAL	POWER BETA							LENGTH	LOCATION							
	87807-2001	24							16	114.3 4.500							
87807-2002	16	6	58.42 2.300	50.80 2.000	49.53 1.950	27.94 1.100	7.62 .300	6.86/.270	5.59/.220	A1	TRAY	5.08 .200	5.72 .225	3.18 .125	6.98 .275	6.35 .250	SCREWMOUNT
87807-2003	24	6	63.51 2.500	55.89 2.200	54.61 2.150	27.94 1.100	12.70 .500	6.86/.270	5.59/.220	A1	TRAY	5.08 .200	5.72 .225	3.18 .125	6.98 .275	6.35 .250	BOARDLOCK
87807-2004	24	6	63.51 2.500	55.89 2.200	54.61 2.150	27.94 1.100	12.70 .500	6.86/.270	5.59/.220	A1	TRAY	5.08 .200	5.72 .225	3.18 .125	6.98 .275	6.35 .250	SCREWMOUNT
87807-2005	24	6	63.51 2.500	55.89 2.200	54.61 2.150	27.94 1.100	12.70 .500	6.86/.270	5.59/.220	A1, B5, C5	TRAY	5.08 .200	5.72 .225	3.18 .125	6.98 .275	6.35 .250	SCREWMOUNT
87807-2006	24	6	63.51 2.500	55.89 2.200	54.61 2.150	27.94 1.100	12.70 .500	6.86/.270	5.59/.220	A1, B5, C5, C6	TRAY	5.08 .200	5.72 .225	3.18 .125	6.98 .275	6.35 .250	SCREWMOUNT
87807-2007	24	6	63.51 2.500	55.89 2.200	54.61 2.150	27.94 1.100	12.70 .500	6.86/.270	5.59/.220	A1 TO A6	TRAY	5.08 .200	5.72 .225	3.18 .125	6.98 .275	6.35 .250	SCREWMOUNT
87807-2010	24	10	83.83 3.300	76.21 3.000	74.93 2.950	48.26 1.900	12.70 .500	6.86/.270	5.59/.220	A2, A4, B4, C4, D6	TRAY	5.08 .200	5.72 .225	3.18 .125	6.98 .275	6.35 .250	SCREWMOUNT
87807-2011	24	10	83.83 3.300	76.21 3.000	74.93 2.950	48.26 1.900	12.70 .500	6.86/.270	5.59/.220	A2, A4, B4, C4, D6	TRAY	5.08 .200	5.72 .225	3.18 .125	6.98 .275	6.35 .250	BOARDLOCK



<b>ADD P/N(87807-2011)</b> EC NO: S2009-0688 DRWN: YCHONG 2009/03/27 CHKD: ATSEE 2009/03/30 APPR: MLONG 2009/03/30 REV DESCRIPTION	QUALITY SYMBOLS	GENERAL TOLERANCES (UNLESS SPECIFIED)	DIMENSION STYLE	SCALE	DESIGN UNITS	THIRD ANGLE PROJECTION
	▽=0 ◻=0	mm INCH	MM/IN	NTS	METRIC	
		4 PLACES ± --- ± ---	DRAWN BY DATE	TITLE		
		3 PLACES ± --- ± .010	NRVITTAP 2004/03/26	POWER CONNECTOR HEADER		
		2 PLACES ± 0.25 ± ---	CHECKED BY DATE	5.08MM VERSION		
	1 PLACE ± --- ± ---	BHLOW 2004/04/14	S-P(B), R/A, T/H			
	ANGULAR ± 3 °	APPROVED BY DATE	MOLEX INCORPORATED			
		SCLOW 2004/04/19	MATERIAL NO. DOCUMENT NO.			
			SEE TABLE SD-87807-001			
			SHEET NO.			
			3 OF 3			
			THIS DRAWING CONTAINS INFORMATION THAT IS PROPRIETARY TO MOLEX INCORPORATED AND SHOULD NOT BE USED WITHOUT WRITTEN PERMISSION			