

PART NUMBER	REV	TERMINATOR	FEED TYPE	DESCRIPTION
1339833-1	A	BENCH & LEADMAKER	MECH POST FEED	HDI APPLICATOR
7-1339833-1	A	BENCH & LEADMAKER	MECH POST FEED	-1 AND SPARE PARTS
7-1339833-7	A	-	-	SPARE PARTS KIT

SET UP GAGE		LOC	DIST	REVISIONS			
458638-3		A	66	REV	DATE	BY	APP'D
				A	SEE ECO-08-017196	28JUL2008	LJL MC

CRIMP DATA TE TERMINAL TE CRIMP SPECS

TERMINAL NAME: SPARK PLUG WIRE TERMINAL

CRIMP	SIZE	TYPE	RANGE
WIRE	2.79 [.110 IN]	F	0.50-1.00mm ²
INSUL	7.11 [.280 IN]	F	6.70-7.31 [.264-.288 IN]

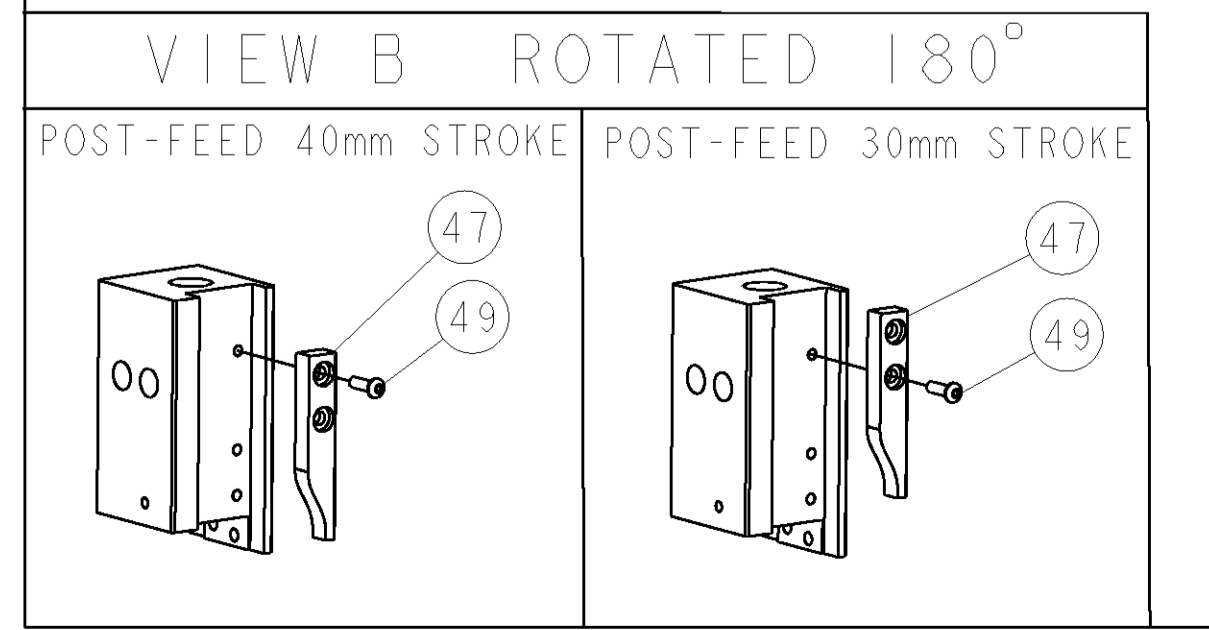
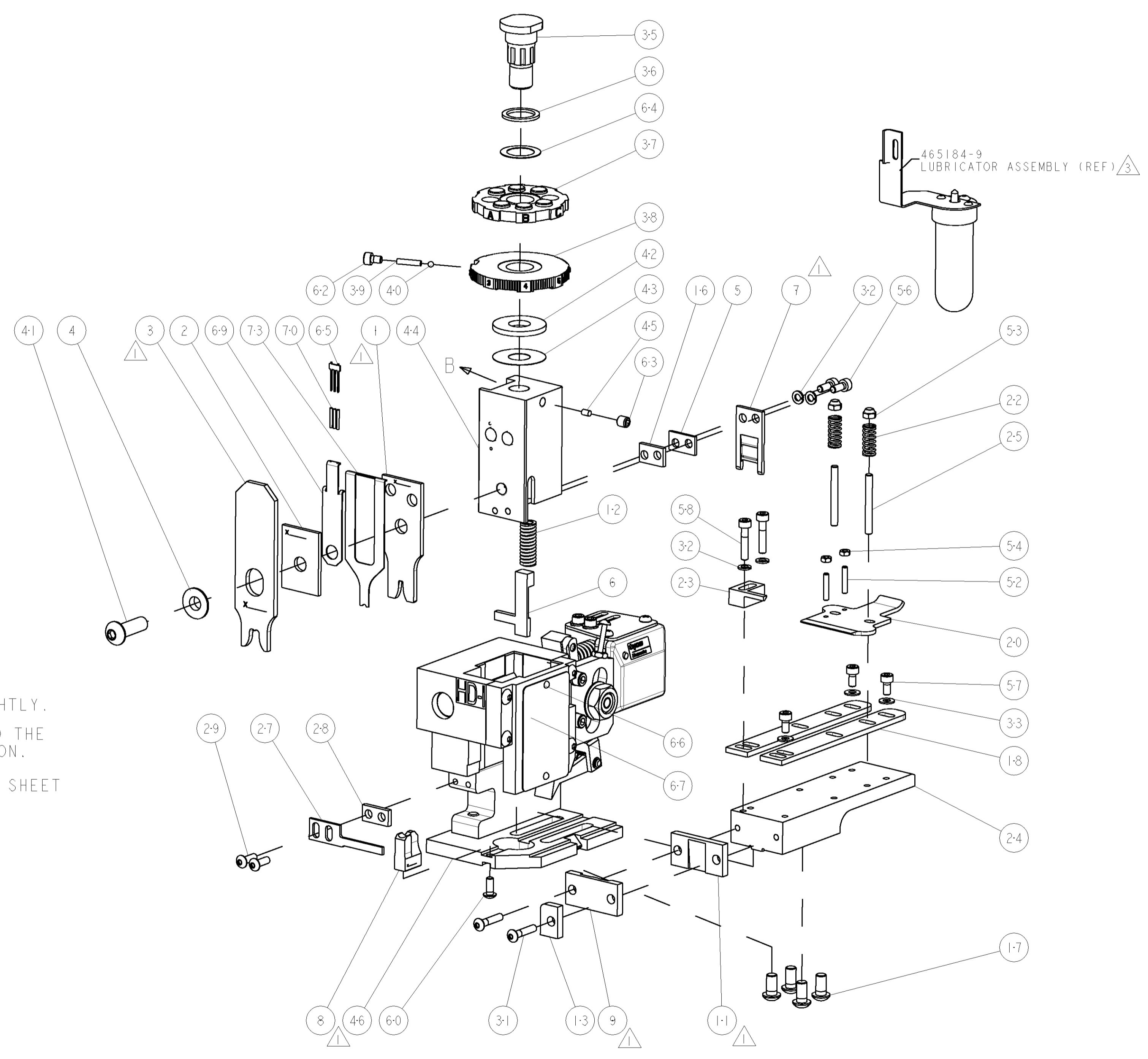
WIRE STRIP LENGTH 6.50 [.256 IN] APPL INSTRUCTIONS 408-8323

TERMINAL 114-18022 FEED 19.30 [.760 IN]

TERMINALS APPLIED

WIRE SIZE	CRIMP HEIGHT	PIN PN & LENGTH [IN]
1.00mm ²	1.68 ±0.05 [.066 ±.002 IN]	9-354778-5 [.2970]
0.75mm ²	1.61 ±0.05 [.063 ±.002 IN]	354779-2 [.3000]
0.50mm ²	1.53 ±0.05 [.060 ±.002 IN]	1-354779-0 [.3040]

- RECOMMENDED SPARE PARTS
- GREASE RAM, CAM, CAM FOLLOWER AND FEED ROD LIGHTLY.
- CERTAIN TERMINALS REQUIRE LUBRICATION. REFER TO THE APPLICATOR INSTRUCTION SHEET FOR MORE INFORMATION.
- LUBRICATE DAILY PER THE APPLICATOR INSTRUCTION SHEET SUPPLIED WITH THE APPLICATOR.



-	1	1	1490525-3	DEPRESSOR, WIRE	73
-	1	1	1338705-2	DOCUMENTATION PACKAGE	71
-	3	3	2-23147-2	SPRING, COMPRESSION	70
-	1	1	1490524-1	DEPRESSOR, SPACER	69
-	1	1	461264-1	PLATE, IDENTIFICATION	67
-	2	2	21017-2	SCREW, DRIVE	66
-	1	1	1424350-1	HOLDER, PIN, WIRED	65
-	1	1	986950-1	WASHER, FLAT PRECISION	64
-	1	1	3-18031-0	SCR, SET, CUP POINT M6 X 6.0	63
-	1	1	18023-9	SCR, SKT HD CAP M4 X 6.0	62
-	1	1	18024-7	SCR, BTN SKT HD CAP (M4 X 10.0)	60
-	2	2	1-18023-4	SCR, SKT HD CAP M4 X 20.0	58
-	3	3	1-18023-0	SCR, SKT HD CAP M4 X 8.0	57
-	2	2	1-18023-1	SCR, SKT HD CAP M4 X 10.0	56
-	2	2	18029-1	NUT, HEX, REG M3	54
-	2	2	986965-1	NUT, LOCK, HEX, TORQUE (M4)	53
-	2	2	2-18031-3	SCR, SET, CUP POINT M3 X 16.0	52
-	1	1	18024-3	SCR, BTN SKT HD CAP (M3 X 10.0)	49
-	1	1	1338676-1	CAM, UNIVERSAL POST-FEED	47
-	1	1	1338662-3	SUB ASSY, APPLICATOR FRAME	46
-	1	1	690191-1	PLUG, NYLON	45
-	1	1	1320998-1	RAM	44
-	1	1	690125-1	SHIM SUB-ASSY	43
-	1	1	690124-1	WASHER, RAM (.115)	42
-	1	1	2-18024-6	SCR, BTN SKT HD CAP (M8 X 25.0)	41
-	1	1	23241-1	BALL, STEEL	40
-	1	1	2-22278-7	SPRING, COMPRESSION	39
-	1	1	1320922-1	DISC, ADJUST, INSULATION CRIMP	38
-	1	1	354777-1	WIRE DISC, ASSEMBLY	37
-	1	1	22480-5	SPRING, COMPRESSION	36
-	1	1	690212-1	POST, RAM	35
-	3	3	18027-2	WASHER, FLAT, REG M4	33
-	4	4	18025-2	WASHER, SPRG LOCK, REG M4	32
-	2	2	1-18024-0	SCR, BTN SKT HD CAP (M4 X 20.0)	31
-	2	2	18024-8	SCR, BTN SKT HD CAP (M4 X 12.0)	29
-	1	1	5-690451-3	SPACER, STRIPPER	28
-	1	1	690455-2	STRIPPER, FRONT CASTING	27
-	2	2	1320906-1	STUD, THREADED	25
-	1	1	1320995-1	PLATE, STRIP GUIDE	24
-	1	1	1-240825-9	PLATE, STRIP HOLD DOWN	23
-	2	2	3-22281-8	SPRING, DRAG	22
-	1	1	1333327-1	DRAG, MODIFIED	20
-	2	2	1338663-6	GUIDE, LOWER STRIP	18
-	4	4	1-18024-8	SCR, BTN SKT HD CAP (M6 X 12.0)	17
-	1	1	1338708-1	SPACER, SLUG BLADE	16
-	1	1	690481-2	SPACER, HOLD DOWN	13
-	1	1	23846-1	SPRING, DIE	12
-	1	1	240644-1	PLATE, REAR SHEAR	11
-	-	-	-	-	10
-	1	1	690482-3	PLATE, FRONT SHEAR	9
-	1	2	4-1633383-5	ANVIL, COMBINATION	8
-	1	1	1333326-1	BLADE, SLUG, SPECIAL	7
-	1	1	5-455892-4	HOLD DOWN, TERMINAL	6
-	1	1	3-240641-3	SPACER	5
-	1	1	238009-1	BLOCK, FL CRIMPER SPACER	4
-	1	2	8-1633471-2	CRIMPER, INSULATION F	3
-	1	1	2-455888-1	SPACER, CRIMPER	2
-	1	2	6-456408-7	CRIMPER, WIRE PREMIUM	1

DIMENSIONS:		TOLERANCES UNLESS OTHERWISE SPECIFIED:		MATERIAL:		FINISH:	
INCHES	0 PLC ±.01	1 PLC ±.01	2 PLC ±.01	3 PLC ±.001	4 PLC ±.0001	ANGLES ±.0001	

DATE	BY	CHK	APP'D	PRODUCT SPEC	APPLICATION SPEC	SIZE	CAGE CODE	DRAWING NO	RESTRICTED TO
13JUN2008	L LOFTHOUSE		M CLIFFORD			A1	00779	1339833	

CUSTOMER VIEWABLE ASSEMBLY