

4

3

2

1

THIS DRAWING IS UNPUBLISHED.

RELEASED FOR PUBLICATION

20

REVISIONS

© COPYRIGHT 20 BY -

ALL RIGHTS RESERVED.

P	LTR	DESCRIPTION	DATE	DWN	APVD
	A	INITIAL RELEASE	13SEP2018	DW	CW
	B	ECR-21-122216	09DEC2021	WQR	CW

4X M3 SCREW  
RECOMMENDED TIGHTENING TORQUE 0.5Nm  
4X M3 螺丝, 推荐力矩0.5Nm

NOTES:

1. TECHNICAL CHARACTERISTICS:  
FRAME MATERIAL: DIE CAST ZINC ALLOY  
NUMBER OF MODULES: 1  
SURFACE: SEE TABLE  
MATING CYCLES: 500 CYCLE


注释:

1. 技术参数:  
框架材料: 锌合金  
模块数量: 1  
表面处理: 见表格  
插拔次数: 500次

2X M3 SCREW  
RECOMMENDED TIGHTENING TORQUE 0.5Nm  
2X M3 螺丝, 推荐力矩0.5Nm

PANEL CUT FOR FRAME USE WITHOUT HOODS/ HOUSINGS  
不使用防护外壳时框架的安装开孔图

T2079104101-002	H10A-T1-M-HD	H10A MALE MODULE FRAME, MATED WITH DYNAMIC, BLACK NICKEL PLATED H10A模块公框架, 适配DYNAMIC, 镀黑镍
T2079104201-002	H10A-T1-F-HD	H10A FEMALE MODULE FRAME, MATED WITH DYNAMIC, BLACK NICKEL PLATED H10A模块母框架, 适配DYNAMIC, 镀黑镍
PART NUMBER 料号	PART DESCRIPTION 描述	

THIS DRAWING IS A CONTROLLED DOCUMENT.		DWN 12SEP2018 DAVID WANG	 TE Connectivity	
		CHK 12SEP2018 GINO YAO		
DIMENSIONS: mm		APVD 12SEP2018 CHRIS WANG	NAME H10A-T1	
TOLERANCES UNLESS OTHERWISE SPECIFIED:		PRODUCT SPEC	-	
0 PLC ±-		APPLICATION SPEC	-	
1 PLC ±-		WEIGHT	-	
2 PLC ±-		SIZE	A300779	
3 PLC ±-		CAGE CODE	G-T2079104X01002	
4 PLC ±-		DRAWING NO	-	
ANGLES ±-		RESTRICTED TO	-	
FINISH		SCALE	1:1	
-		SHEET	1 OF 2	
-		REV	B	
MATERIAL		CUSTOMER DRAWING		

1470-19 (3/13)

THIS DRAWING IS UNPUBLISHED.

RELEASED FOR PUBLICATION

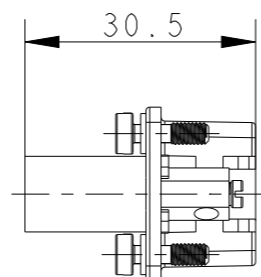
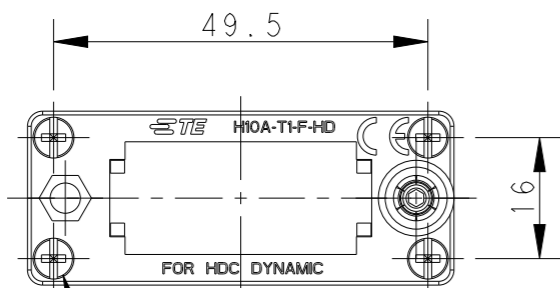
20

© COPYRIGHT 20 BY -

ALL RIGHTS RESERVED.

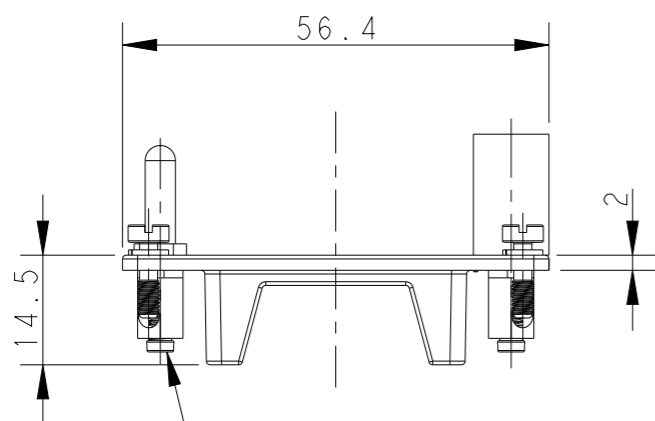
REVISIONS

P	LTR	DESCRIPTION	DATE	DWN	APVD
-	-	SEE SHEET 1	-	-	-

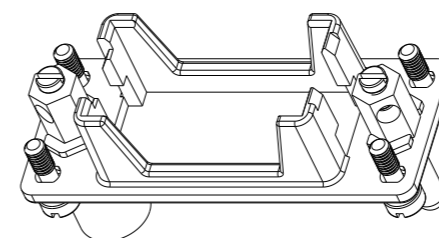
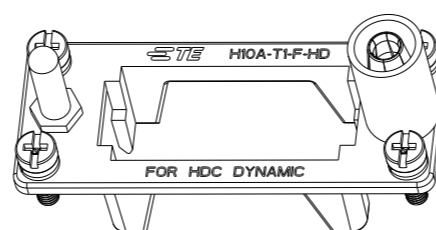


4X M3 SCREW  
 RECOMMENDED TIGHTENING TORQUE 0.5Nm  
 4X M3 螺丝, 推荐力矩0.5Nm

NOTES:  
 SEE SHEET 1



2X M3 SCREW  
 RECOMMENDED TIGHTENING TORQUE 0.5Nm  
 2X M3 螺丝, 推荐力矩0.5Nm



THIS DRAWING IS A CONTROLLED DOCUMENT.

DWN 12SEP2018

DAVID WANG

CHK 12SEP2018

GINO YAO

APVD 12SEP2018

CHRIS WANG

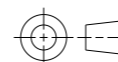
NAME H10A-T1



TE Connectivity

DIMENSIONS:

mm



TOLERANCES UNLESS OTHERWISE SPECIFIED:

- 0 PLC ±-
- 1 PLC ±-
- 2 PLC ±-
- 3 PLC ±-
- 4 PLC ±-
- ANGLES ±-

MATERIAL

-

FINISH

-

PRODUCT SPEC

APPLICATION SPEC

WEIGHT

-

SIZE	CAGE CODE	DRAWING NO	RESTRICTED TO
------	-----------	------------	---------------

A300779	C-T2079104X01002	-
---------	------------------	---

CUSTOMER DRAWING

SCALE 1:1

SHEET 2 OF 2

REV B