

## PATCHBOX® ID Labels

The ID Labels are simply slid onto the cable stopper on the Cassette. When the PATCHBOX® is mounted above or underneath a switch you already have a logical assignment of the Cassettes to the switch ports. With the patch panel port written on the ID Label you see all your connections immediately.

---

### Technical Specification

**Weight**

0.02kg

**Packaging Dimensions**

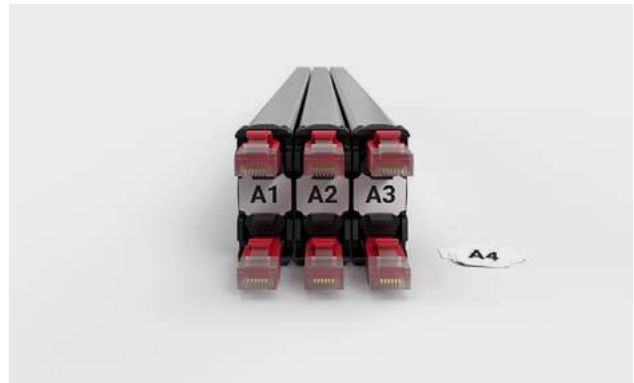
250mm x 160mm x 10mm WxDxH

**HS-Code**

4802 5890

**Country of Origin**

China



---

### Items included

2 x DIN A5 tear-off ID Labels (96 Labels)

---

### Product Code

IDLABELW