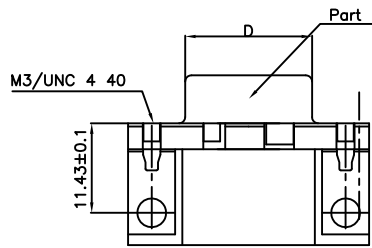


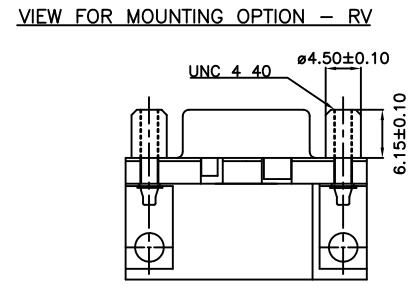
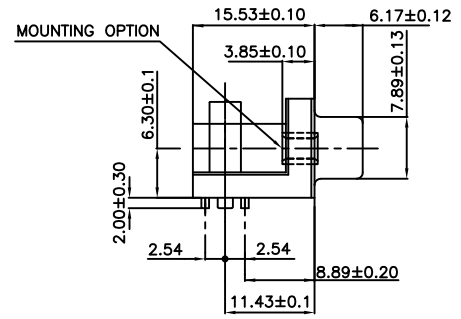
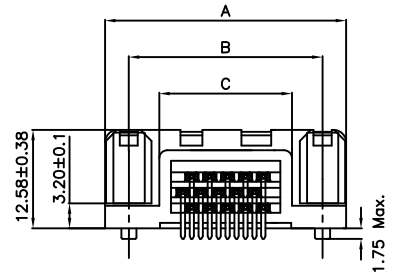
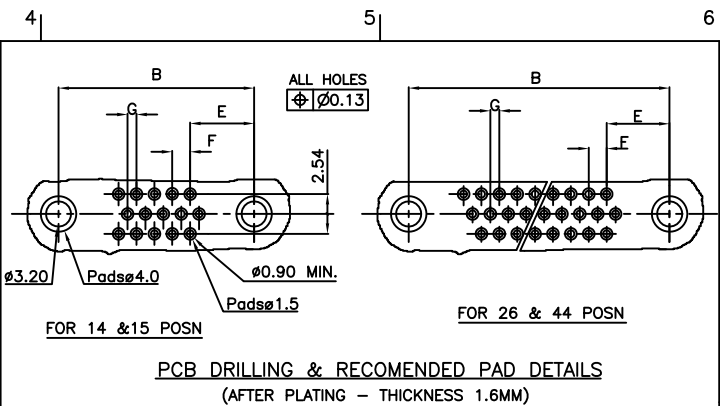


FCIconnect.com

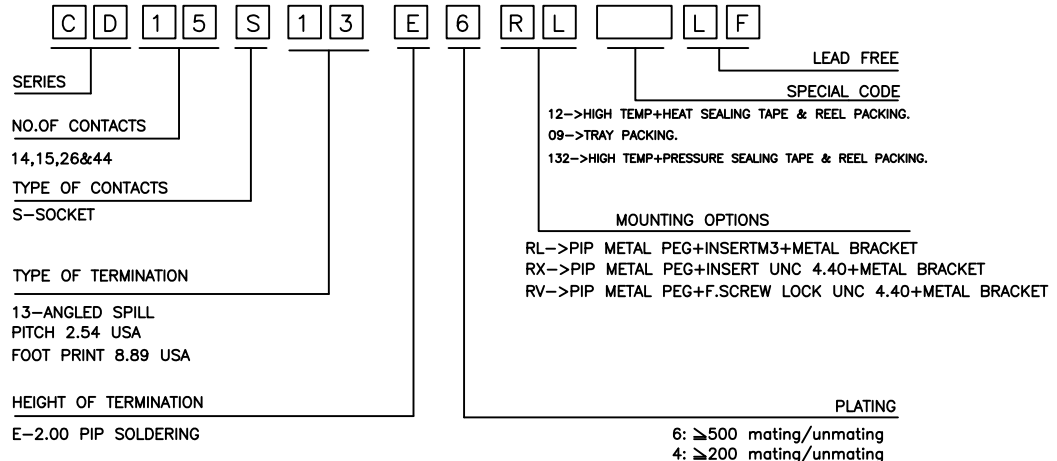
Copyright FCI



SIZE	DIMENSIONS						
	A±0.38	B±0.12	C±0.10	D ^{+0.25} ₋₀	E	F	G
14/15	30.81	24.99	16.96	16.21	8.19	2.28	1.14
26	39.14	33.32	25.18	24.54	8.01	2.285	1.14
44	53.03	47.04	39.12	38.25	8.02	2.285	1.14



ORDERING INFORMATION



"This product meets European Union Directives and other country regulations as described in GS-47-0004"

The housing will withstand exposure to 260°C peak temperature for 30 seconds in a convection,infra-red or vapor reflow oven solder application.

Packaging as per GS-14-920

TRUE POSITION : $\varnothing \ 0.36$

PRODUCT SPECIFICATION

See :- GS-12-607

PACKAGING SPECIFICATION

See :- GS-14-1139 - Tape & Reel Packing
See :- GS-14-1157 - Tray Packing

- NOTES :
- GENERAL VIEW IS FOR MOUNTING OPTION - RX/RL
 - FOR 14 POSN , HOLE NO:9 IS BLOCKED

mat'l. code		surface ISO 1302		tolerance ISO 406 ISO 1101		projection		product family COMPACT D	
ltr	ecn no	dr	date	tolerances unless otherwise specified		MM		title	
A	107-0166	AS	2007-12-4	angles	linear	MM		C-D A/S FEMALE PIP CONNECTOR	
B	109-0130	AS	2009-7-8			scale			
C	109-0202	NG	2009-9-24			-			
D	111-0052	RPK	2011-3-17	dr	ANISH.SALAM	2007-12-04		dwg no	
E	ELX-121007	AB	2015/06/03	enrg	ALIAS.BABU	2015/06/03		sheet 1 of 1	
				chr	MITHUN.PAUL	2015/06/03		size A3	
				appd	BIJU.K.PAUL	2015/06/03		type Product Customer Drawing	
sheet index	revision sheet	E	1						