



CABLE 333 RF: I-PEX MHF I LK PLUG + RP SMA STRAIGHT BULKHEAD JACK + MULTIPLE CABLE SIZES

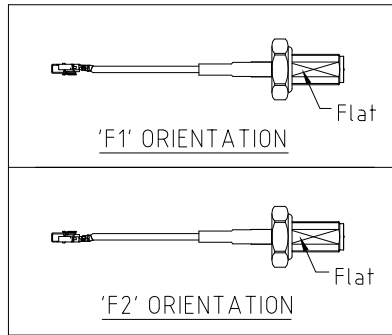
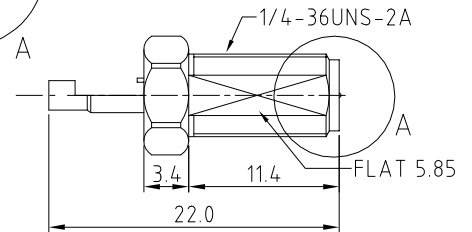
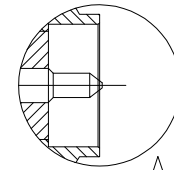
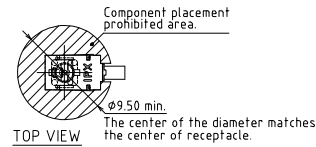
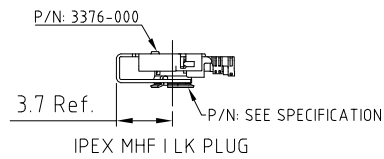
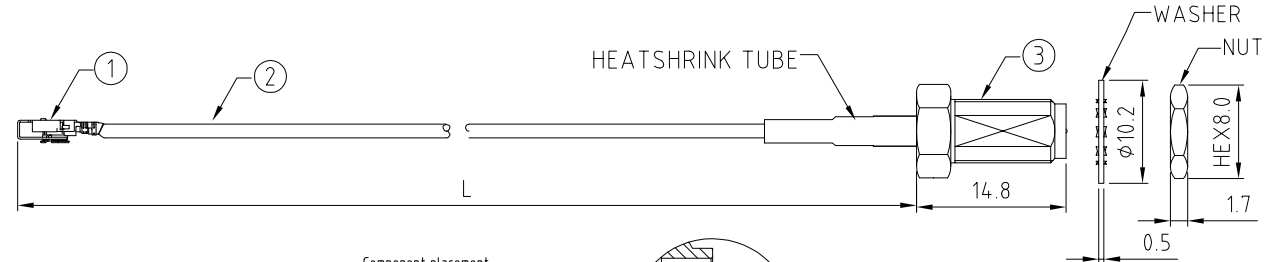
SPECIFICATIONS :

1. I-PEX MHF I LK PLUG, P/N:  
FOR  $\phi 1.13\text{MM}$  CABLE: 20670-001R-13 + 3376-000.  
FOR  $\phi 1.37\text{MM}$  CABLE: 20670-001R-37 + 3376-000.
2. COAXIAL CABLE, SEE P/N OPTIONS.
3. RP SMA STRAIGHT BULKHEAD JACK, P/N: RFCT-SMA018-F08.

**USAGE PRECAUTIONS: CABLES USING 'MICRO' COAX ARE DELICATE:**  
 (i) HANDLE WITH CARE.  
 (ii) DO NOT TWIST; APPLY EXCESSIVE FORCES OR SHARP BENDS TO THE CABLE. DO NOT FORCEFULLY DEFORM WIRES.  
 (iii) CONSULT CONNECTOR MANUFACTURER'S DATASHEETS FOR DETAILED NOTES ON HANDLING INSTRUCTIONS.

NOTES:

1. THE ORIENTATION OF CONNECTORS ON DRAWING IS FOR REFERENCE ONLY, IF THE ORDER IS LEFT BLANK THE CONNECTOR WILL NOT HAVE FIXED ORIENTATION.
2. FIXED ORIENTATION IS SUGGESTED FOR CABLE LENGTH 25MM TO 100MM. PLEASE SPECIFY THE FIXED ORIENTATIONS FROM THE ORDER CODE (F1, F2, ETC)
3. CONTACT GRAD CONN IF THE ORIENTATION YOU REQUIRE IS NOT SHOWN.
4. WORKING FREQUENCY RANGE: DC-3GHz.
5. OPERATING TEMPERATURE:  $-40^{\circ}\text{C}$  TO  $+85^{\circ}\text{C}$ .
6. IMPEDANCE: 50 OHM.



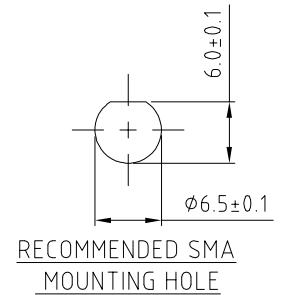
HOW TO ORDER  
 CABLE 333 RF - X X X - X X - X - X

"L" LENGTH IN MM:  
 eg: 100MM = 100  
 (MIN. 025-MAX.400  
 STANDARD = 100, 150, 200)  
 Tolerance: 50-200mm:  $\pm 5\text{mm}$ .  
 201-400mm:  $\pm 7\text{mm}$ .

CABLE SIZE OPTIONS:  
 1 =  $\phi 1.13\text{MM}$  CABLE, COLOR: GRAY  
 2 =  $\phi 1.37\text{MM}$  CABLE, COLOR: BLACK

WASHER AND NUT OPTIONS:  
 BLANK = SEPARATELY PACKED (STANDARD)  
 A = ALL ASSEMBLED WITH CONNECTOR

ORIENTATION OPTIONS:  
 BLANK = DOES NOT HAVE A FIXED ORIENTATION  
 F1 = MHF CONNECTION DOWN (L=25-200MM)  
 F2 = MHF CONNECTION UP (L=25-200MM)  
 (SEE NOTES 1, 2, 3 AND DIAGRAMS FOR MORE INFORMATION)



REV. DATE & DRN	10 10/07/19 - NYW RELEASE
11 28/03/19 - NYW	AMEND SMA DESCRIPTION
12 20/07/20 - NYW	ADD 137 CABLE OPTION.
13 09/07/20 - NYW	ADD NOTES 5 & 6.
14 09/07/20 - NYW	AMEND OPERATING TEMP.
15 03/12/20 - NYW	ADD MHF I LK PROHIBITED AREA
	UPDATE MHF I LK P/N'S.

Scale: NTS	THIRD ANGLE	Unstated .X .XX .XXX ANGLES	Tolerances: N/A N/A N/A N/A	Material: SEE NOTE
Drawn: NYW				
App'd: XXX	Title: CABLE ASSEMBLY			NOT TO SCALE
Date: 3 DEC. '20	Revision: 1.5			Unit: mm

THIS DRAWING IS CONFIDENTIAL AND MUST NOT BE COPIED OR DISCLOSED WITHOUT WRITTEN CONSENT

Type: Cable 333 RF
CABLE 333 RF
Drawing Number:
Sheet 1 of 1
Drawing © E and O E