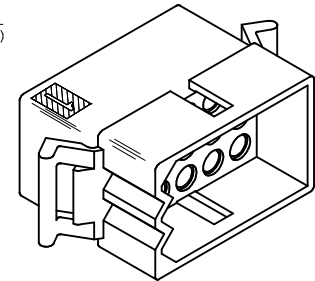
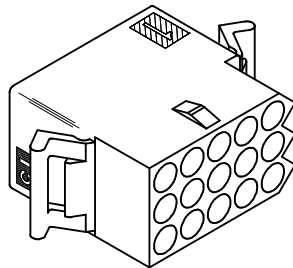


RECEPTACLE

PLUG



REMOVE 1375-R6 DEC NO: UCP2015-5225 DRWN: J.MONTI 2015/06/11 CHKD: JHK/PPER 2015/06/11 APPR: F.SMITH 2015/06/19	QUALITY SYMBOLS ▽=0 ▽=0 ▽=0	GENERAL TOLERANCES (UNLESS SPECIFIED)		DIMENSION STYLE IN/MM	SCALE 2:1	DESIGN UNITS INCH	THIRD ANGLE PROJECTION
		4 PLACES ± --- ± --- 3 PLACES ± --- ± .010 2 PLACES ± 0.25 ± .014 1 PLACE ± 0.35 ± --- 0 PLACE ± --- ± ---	mm INCH DRAWN BY DATE KBW 01/14/1989 CHECKED BY DATE RW 01/14/1989 APPROVED BY DATE F.SMITH 2015/06/19	TITLE .093/(2.36) HOUSINGS PLUG & RECEPTACLE 15 CIRCUIT, .198/(5.03)CL		MATERIAL NO. SEE CHART	DOCUMENT NO. SD-1375-*
REV AE2	DESCRIPTION REMOVE 1375-R6	ANGULAR ±1/2° DRAFT WHERE APPLICABLE MUST REMAIN WITHIN DIMENSIONS		THIS DRAWING CONTAINS INFORMATION THAT IS PROPRIETARY TO MOLEX INCORPORATED AND SHOULD NOT BE USED WITHOUT WRITTEN PERMISSION			

PLUG			RECEPTACLE		
ORDER NO	ENG NO	PACKAGING	ORDER NO	ENG NO	PACKAGING
03-09-2151	I375-P	PK-1375-001	03-09-1151	I375-R	PK-1375-001
03-09-2159	I375-P4	PK-1375-002	03-09-1152	I375-R1	PK-1375-001
03-09-2158	I375-P7	PK-1375-001	03-09-1157	I375-R6-1	PK-1375-001
			03-09-1153	I375-R2	PK-1375-001

LEGEND FOR PLUG:

I375-P***

- OPTIONS:**
- BLANK = W/O EARS, W/ PULL TABS, W/O LOCK WINDOWS
 - 2 = W/ STANDARD EARS, W/O PULL TABS, W/O LOCK WINDOWS
 - 4 = W/ PREBENT EARS, W/O PULL TABS, W/ LOCK WINDOWS
 - 6 = W/O EARS, W/O PULL TABS, W/ LOCK WINDOWS
 - 7 = W/O EARS, W/ PULL TABS, W/ LOCK WINDOWS
 - 8 = W/ PREBENT EARS, W/O PULL TABS, W/O LOCK WINDOWS

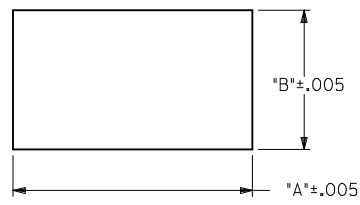
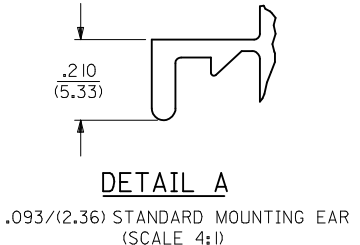
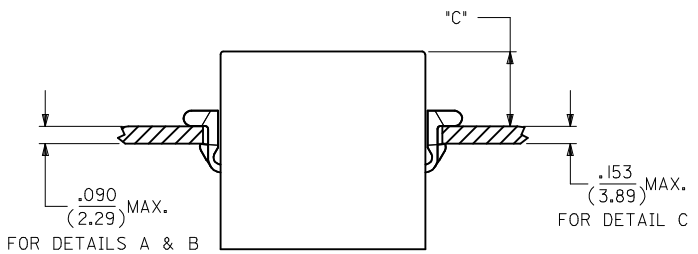
- COLOR:**
- BLANK = NATURAL COLOR
 - AM = AMBER BK = BLACK BU = BLUE
 - BN = BROWN GY = GRAY GN = GREEN
 - OR = ORANGE RD = RED YW = YELLOW

LEGEND FOR RECEPTACLE:

I375-R***

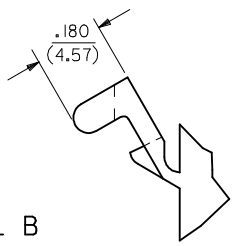
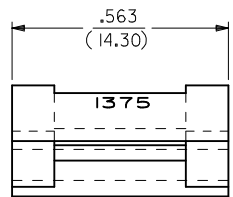
- OPTIONS:**
- BLANK = W/ PREBENT EARS, W/O LOCK RAMPS
 - 1 = W/O EARS, W/O LOCK RAMPS
 - 2 = W/PREBENT EARS, W/LOCK RAMPS
 - 6-1 = W/O EARS, W/ LOCK RAMPS

- COLOR:**
- BLANK = NATURAL COLOR
 - AM = AMBER BK = BLACK BU = BLUE
 - BN = BROWN GY = GRAY GN = GREEN
 - OR = ORANGE RD = RED YW = YELLOW



RECOMMENDED PANEL OPENING

HOUSING	DIM. "A"	DIM. "B"	"C" PREBENT EAR	"C" STANDARD EAR	"C" SPECIAL EAR
PLUG	1.343/(34.1)	.760/(19.30)	.40/(10.2)	.36/(9.1)	
RECEPT. W/ RAMPS	1.240/(31.50)	.725/(18.42)	.41/(10.4)	.37/(9.4)	.31/(7.8)
RECEPT. W/O RAMPS	1.240/(31.50)	.655/(16.64)	.41/(10.4)	.37/(9.4)	.31/(7.8)



NOTES :

1. MATERIAL : NYLON TYPE 6/6, 94V-2.
2. FINISH : NONE.
3. PRODUCT SPECIFICATION : PS-02-09.
4. PACKAGING INFORMATION : SEE CHART.
5. ETCHED CIRCUIT I.D. NUMBERS ON SIDE OF HOUSINGS TO BE PRESENT ON PARTS FROM TOOLS BUILT AFTER 2/28/94.
6. PARTS CONFORM TO CLASS B REQUIREMENTS OF COSMETIC SPECIFICATION PS-45499-002.

SEE SHEET 1 EC NO: UCP2015-5225 DRWN: J.MONT 2015/06/11 CHKD: HK.IPPER 2015/06/11 APPR: F.SMITH 2015/06/19 AE2	QUALITY SYMBOLS 	GENERAL TOLERANCES (UNLESS SPECIFIED)		DIMENSION STYLE IN/MM	SCALE 1:1	DESIGN UNITS INCH	THIRD ANGLE PROJECTION	
		4 PLACES ± --- ± ---	DRAWN BY KBW	DATE 01/14/1989	TITLE .093/(2.36) HOUSINGS PLUG & RECEPTACLE 15 CIRCUIT..198/(5.03)CL			
		3 PLACES ± --- ± .010	CHECKED BY RW	DATE 01/14/1989				
		2 PLACES ± 0.25 ± .014	APPROVED BY F.SMITH	DATE 2015/06/19	MATERIAL NO. SEE CHART	DOCUMENT NO. SD-1375-*	SHEET NO. 2 OF 2	
DRAFT WHERE APPLICABLE MUST REMAIN WITHIN DIMENSIONS		ANGULAR ±1/2°		THIS DRAWING CONTAINS INFORMATION THAT IS PROPRIETARY TO MOLEX INCORPORATED AND SHOULD NOT BE USED WITHOUT WRITTEN PERMISSION				