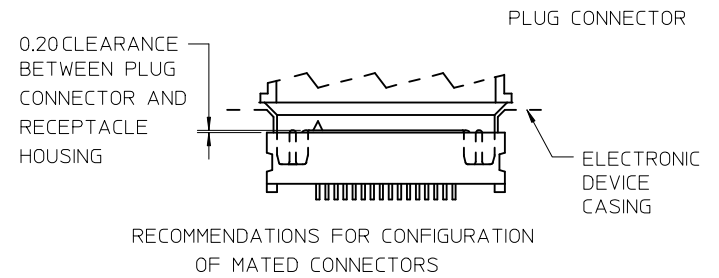
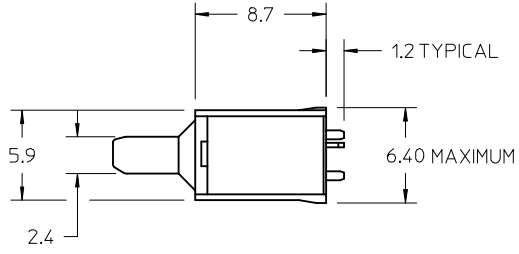
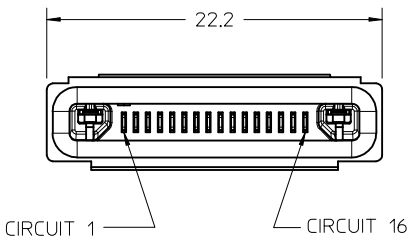
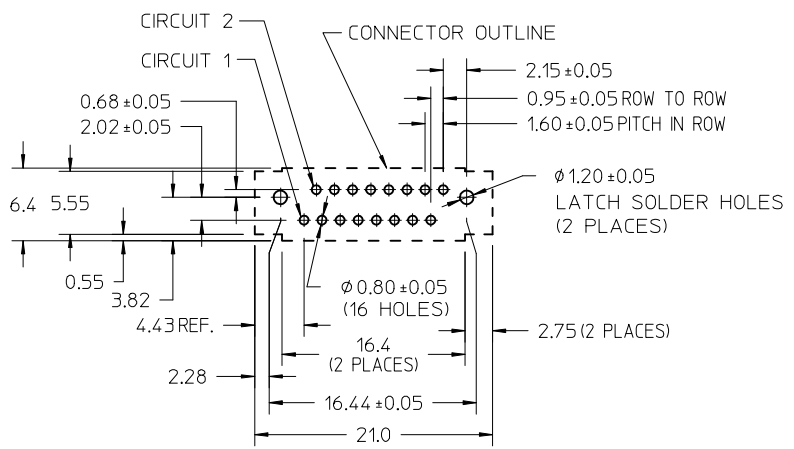


- NOTES:
- MATERIALS:
 - HOUSING: HIGH-TEMPERATURE NYLON, GLASS FILLED, UL94V-0, COLOR: BLACK.
 - TERMINAL: TIN-BRASS ALLOY
 - LATCHES: STAINLESS STEEL.
 - FINISHES:
 - TERMINAL: SELECTIVE GOLD IN CONTACT AREA, THICKNESS= 0.1 MICROMETERS MINIMUM; OVER SELECTIVE PALLADIUM NICKEL IN CONTACT AREA, THICKNESS= 1.0 MICROMETER MINIMUM; SELECTIVE BRIGHT TIN IN SOLDER TAIL AREA, THICKNESS= 1.01 MICROMETERS MINIMUM; NICKEL UNDERPLATE OVERALL.
 - LATCHES: OVERALL TIN, THICKNESS= 5 MICROMETERS MINIMUM, NICKEL UNDERPLATE OVERALL.
 - PRODUCT SPECIFICATION: PS-46132-001.
 - APPLICATION SPECIFICATION: AS-44828-001.
 - PACKAGED PER PACKAGING SPECIFICATION PK-45593-001.
 - PART COMPLIES WITH CLASS C OF COSMETIC SPECIFICATION PS-45499-002.



IMPORTANT: PLEASE REFER TO MOLEX APPLICATION SPECIFICATION AS-44828-001 FOR DETAILED DESIGN LAYOUT AND MATING REQUIREMENTS.

NO. OF CIRCUITS	PLUG ITEM NUMBER	TERMINAL LOCATIONS (PRESENCE DENOTED BY AN X)															
		1	2	3	4	5	6	7	8	9	10	11	12	13	14	15	16
16	461325000	X	X	X	X	X	X	X	X	X	X	X	X	X	X	X	X
11	461325001	X	X	X			X			X	X	X	X	X	X		X
10	461325002	X			X	X	X	X					X	X	X	X	X



ADD -5001 & -5002 EC NO: UCP2009-2006 DRWNG: MORGAN 2009/03/02 CHKD: MIBARRA 2009/03/03 APPR: SMILLER 2009/03/03	QUALITY SYMBOLS ▽=0 ▽=0	GENERAL TOLERANCES (UNLESS SPECIFIED)		DIMENSION STYLE IN/MM		SCALE 4:1	DESIGN UNITS INCH	THIRD ANGLE PROJECTION			
		4 PLACES ± --- ± ---	3 PLACES ± --- ± .005	DRAWN BY DMORGAN	DATE 2009/01/29	TITLE 0.8MM HANDYLINK™ HIGH LOAD PLUG WITH PCB THRU HOLE OPTIONS					
		2 PLACES ± 0.13 ± .010	1 PLACE ± 0.25 ± ---	CHECKED BY MIBARRA	DATE 2009/01/29						
		ANGULAR ± 1/2°		APPROVED BY SMILLER		DATE 2009/01/29	MOLEX INCORPORATED		DOCUMENT NO. SD-46132-500		
DRAFT WHERE APPLICABLE MUST REMAIN WITHIN DIMENSIONS		SEE CHART		MATERIAL NO.		SHEET NO. 1 OF 1		THIS DRAWING CONTAINS INFORMATION THAT IS PROPRIETARY TO MOLEX INCORPORATED AND SHOULD NOT BE USED WITHOUT WRITTEN PERMISSION			