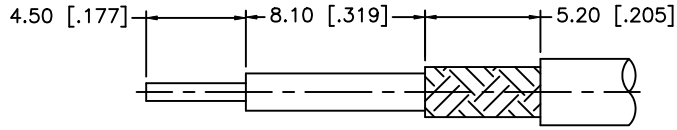
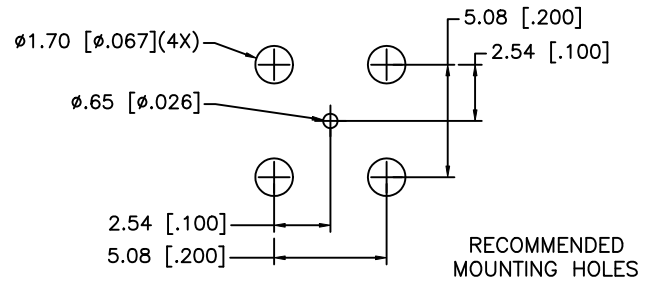
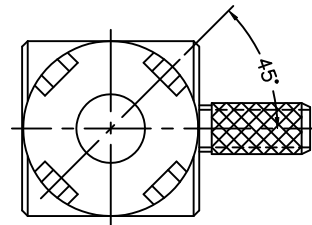
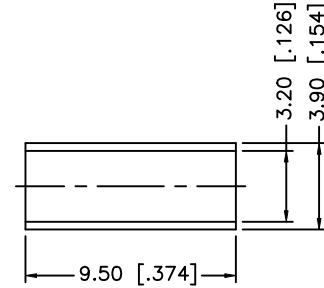
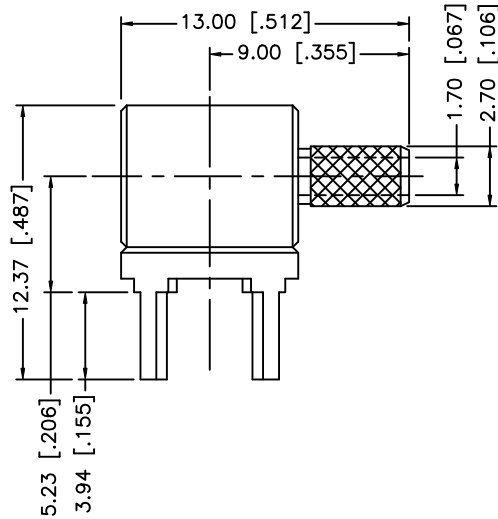
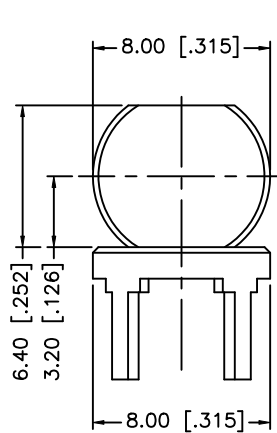


REV.	DATE	DESCRIPTION
NC	12/05/99	INITIAL RELEASE
A	11/13/05	MODIFY FERRULE LENGTH, STRIPPING DIMENSIONS, DRAWING FORMAT
B	09/03/07	REVISE BARREL, FERRULE DIMENSIONS
C	04/02/08	ADD CRIMP NOTE



RECOMMENDED
CABLE STRIPPING DIM'S



RECOMMENDED
MOUNTING HOLES

NOTE:
1. CRIMPED FERRULE HEX CRIMP SIZE .128"

8				
7				
6				
5				
4				
3	FERRULE	COPPER	GOLD	1
2	BARREL	BRASS	GOLD	1
1	BODY	BRASS	GOLD	1
DESCRIPTION	MATERIAL	FINISH	QTY	

UNLESS OTHERWISE SPECIFIED DIMENSIONS ARE IN MILLIMETERS. DIMENSIONS IN [] ARE IN INCHES AND FOR CUSTOMER REFERENCE ONLY.

UNLESS OTHERWISE SPECIFIED TOLERANCES FOR MILLIMETERS ARE:
0.5 - 8mm ± 0.20mm
8 - 30mm ± 0.40mm
30 - 120mm ± 0.50mm

UNLESS OTHERWISE SPECIFIED TOLERANCES FOR INCHES ARE:
.020 - .315 = ± 0.007"
.315 - 1.180 = ± 0.015"
1.180 - 4.724 = ± 0.020"

DO NOT SCALE DRAWING

APPROVALS	DATE
DRAWN G.R.S.	04/02/08
CHECKED	
ISSUED	
SHEET 1 OF 1	
CAD FILE	C:/142/142268.DWG

<h1>Amphenol Connex</h1>			
PART DESCRIPTION			
R/A PCB CABLE TERMINATION (RG-174/U, 188B/U, 179/U, 187A/U, 316/U)			
PART NO.			
142268			
DWG. NO.	142268.DWG	REV. C	SIZE A
			SCALE NA