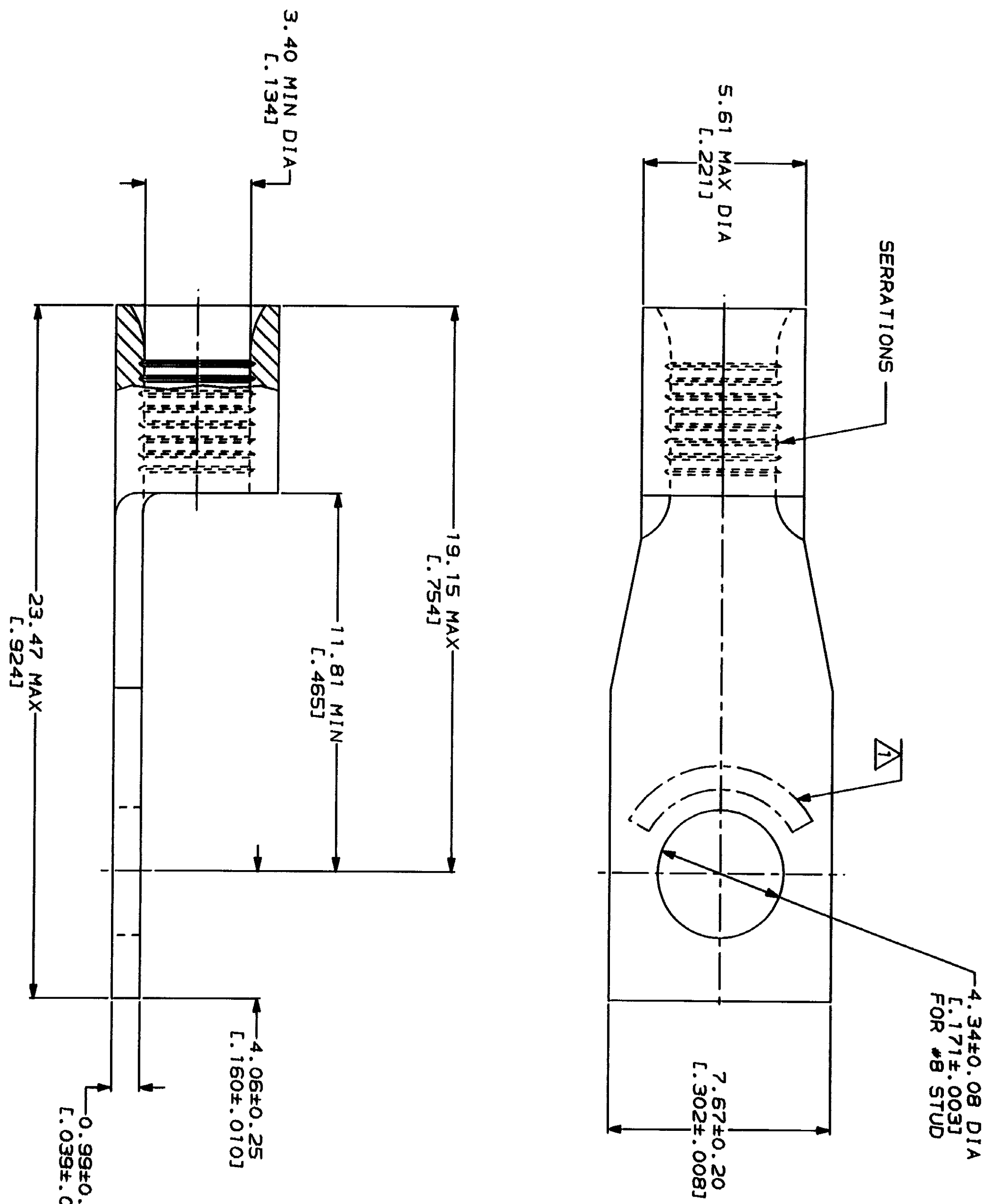


REVISIONS		DATE	APPROV
1	REVISED PER 0720-0230-93		

METRIC
 DIMENSIONS LISTED IN mm [INCHES]

AMP WIRE RANGE 12-10 AWG STRANDED	UL E13288 Listed
LR7189 Certified	MILITARY P/N AND CLASS
NOT CERTIFIED	NOT APPLICABLE

△ STAMP AMP 12-10* APPROX AS SHOWN



AMP INCORPORATED
 CUSTOMER SERVICE SYSTEMS

FOR ADDITIONAL PRODUCT INFORMATION OR COPIES OF DRAWINGS AND TECHNICAL DOCUMENTS	PRODUCT INFORMATION CENTER 1-800-522-6752	MAX RECOMMENDED OPERATING TEMPERATURE: 170°C MAX
FOR APPLICATION TOOLING INFORMATION	TOOLING ASSISTANCE CENTER 1-800-722-1111	VOLTAGE RATING: NOT APPLICABLE
FOR ORDER ENTRY	1-800-526-5142	WIRE CROSS SECTIONAL AREA RANGE: 2.62-6.64mm ² [5,180-13,100] CIR MILS STRANDED

DO NOT SCALE PRINT.
 UNLESS SPECIFIED
 DIMENSIONS IN INCHES
 TOLERANCES ON:
 2 PLC DEC ± .010
 3 PLC DEC ± .005
 ANGLES
 MATERIAL
 COPPER PER
 ASTM B-152
 ANNEALED

DR 1-29-93 TA BRINKMAN	NAME AMP AMP Incorporated Harrisburg, PA 17105-3608
CHK 1-29-93 DA PATTERSON	TERMINAL, RECTANGULAR TONGUE, BUDGET
APPD 1-29-93 DE MILLER	SIZE CAGE CODE 00779
APPD 1-29-93 JL HOCKLEY	DRAWING NO 331269
APPLICATION SPEC	SCALE 8:1
WEIGHT	SHEET 1 OF 1

331269
 PART NO