

- 1
- 2
- 3
- 4
- 5
- 6
- 7
- 8
- 9
- 10
- 11
- 12
- 13
- 14
- 15
- 16
- 17
- 18

MATERIAL

Glass-fibre reinforced polyamide based (PA) technopolymer, black colour, matte finish.

FEATURES AND APPLICATIONS

The adapters allow assembling M.643-FM handles on round tubes with a diameter between 28.6 mm and 32 mm.

MOUNTING

- Plain hole passing completely through the tube, screw with a nut on the outside (Fig.1).
- Threaded hole in the tube wall for tubes with thickness > 2mm (Fig.2).

TECHNICAL DATA

Tensile stress and impact strength: F1, F2, L1 and L2 values reported in the table are the result of breaking tests carried out with the appropriate dynamometric equipment under the test conditions shown in the figure with ambient temperature.

		Handle adapter	
Code	Description	Code	Description
260051	ADT-M.643-FM/100	137301	M.643 FM/100 B-5
260053	ADT-M.643-FM/140	137311	M.643 FM/140 B-6



ELESA Original design

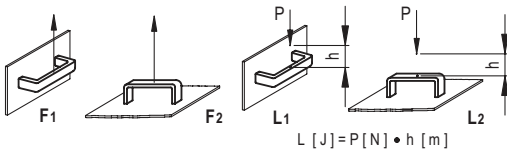
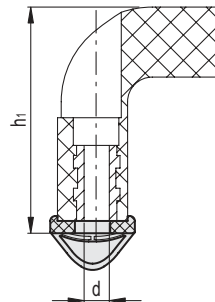
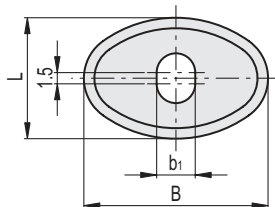
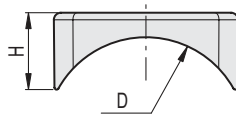
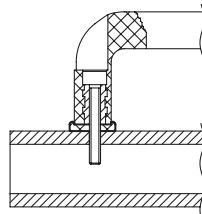
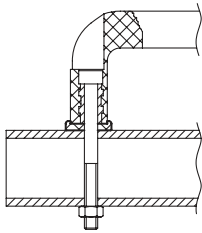


Fig.1

Fig.2



Conversion Table	
1 mm = 0.039 inch	
b1	
mm	inch
5.5	0.22
6.5	0.25

METRIC

Code	Description	L	d	D	H	h1	B	b1	D Tube	F1 [N]	F2 [N]	L1 [J]	L2 [J]	C# [Nm]	⚖️
260051	ADT-M.643-FM/100	17	5	28.6	11	45	26	5.5	28.6+32	1600	2500	9	7	5	3
260053	ADT-M.643-FM/140	19	6	28.6	13	51	28.5	6.5	28.6+32	1700	2900	9	7	6	4