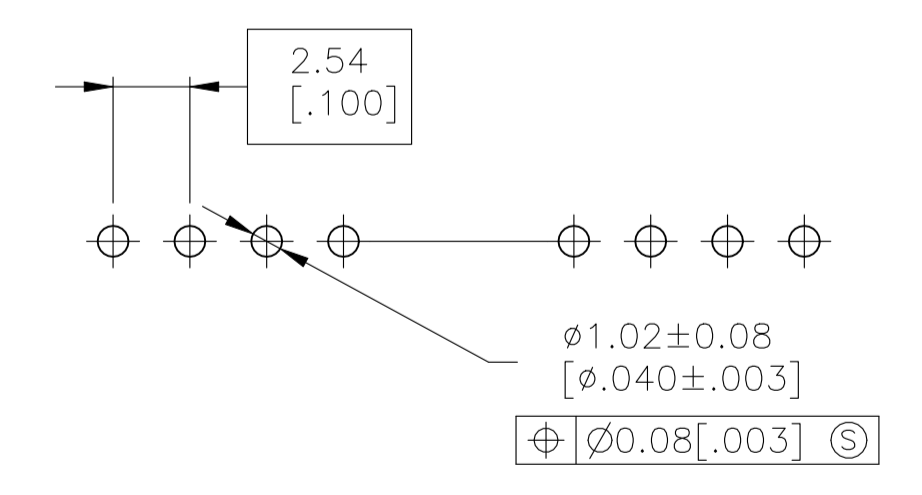
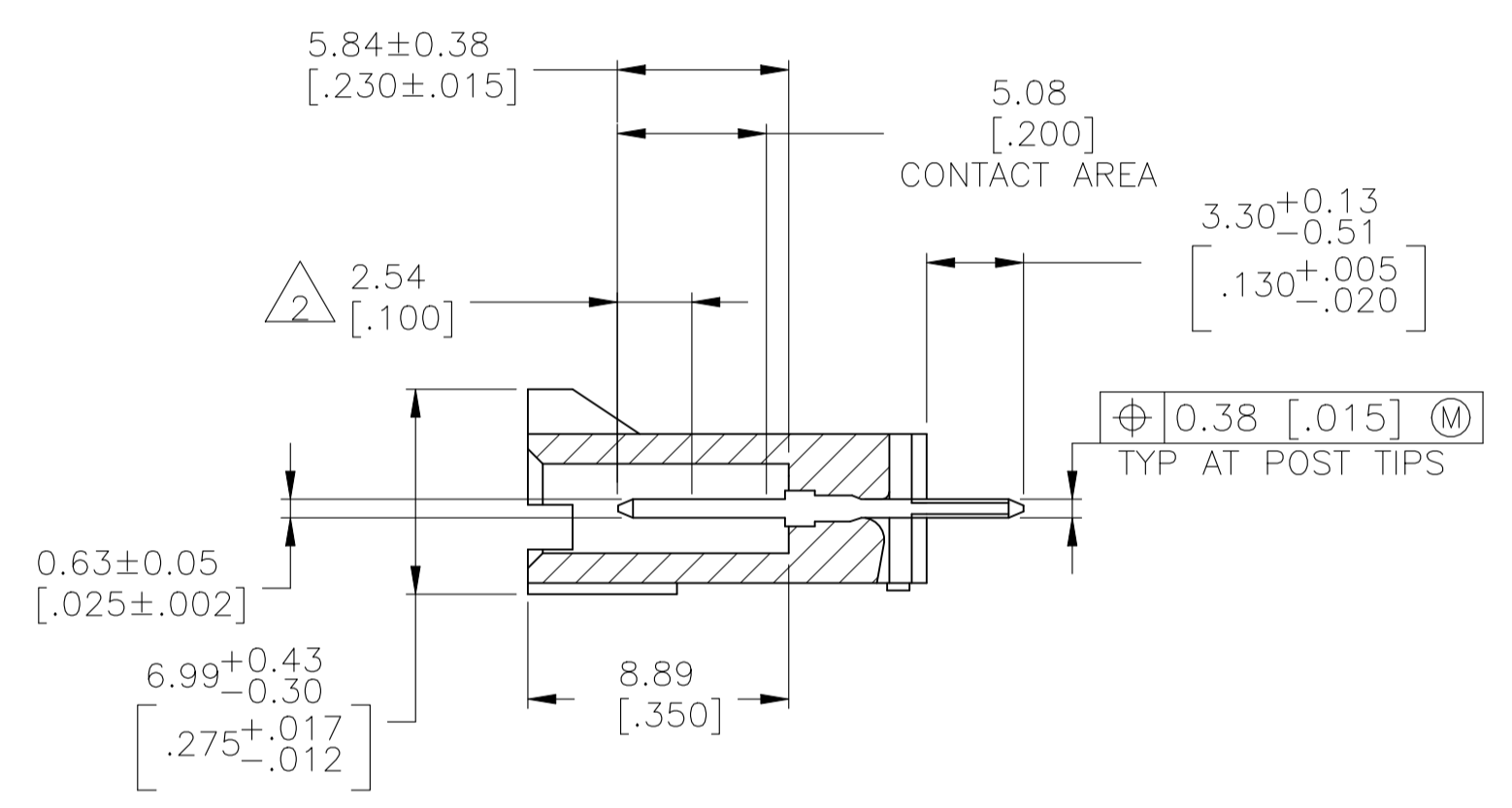
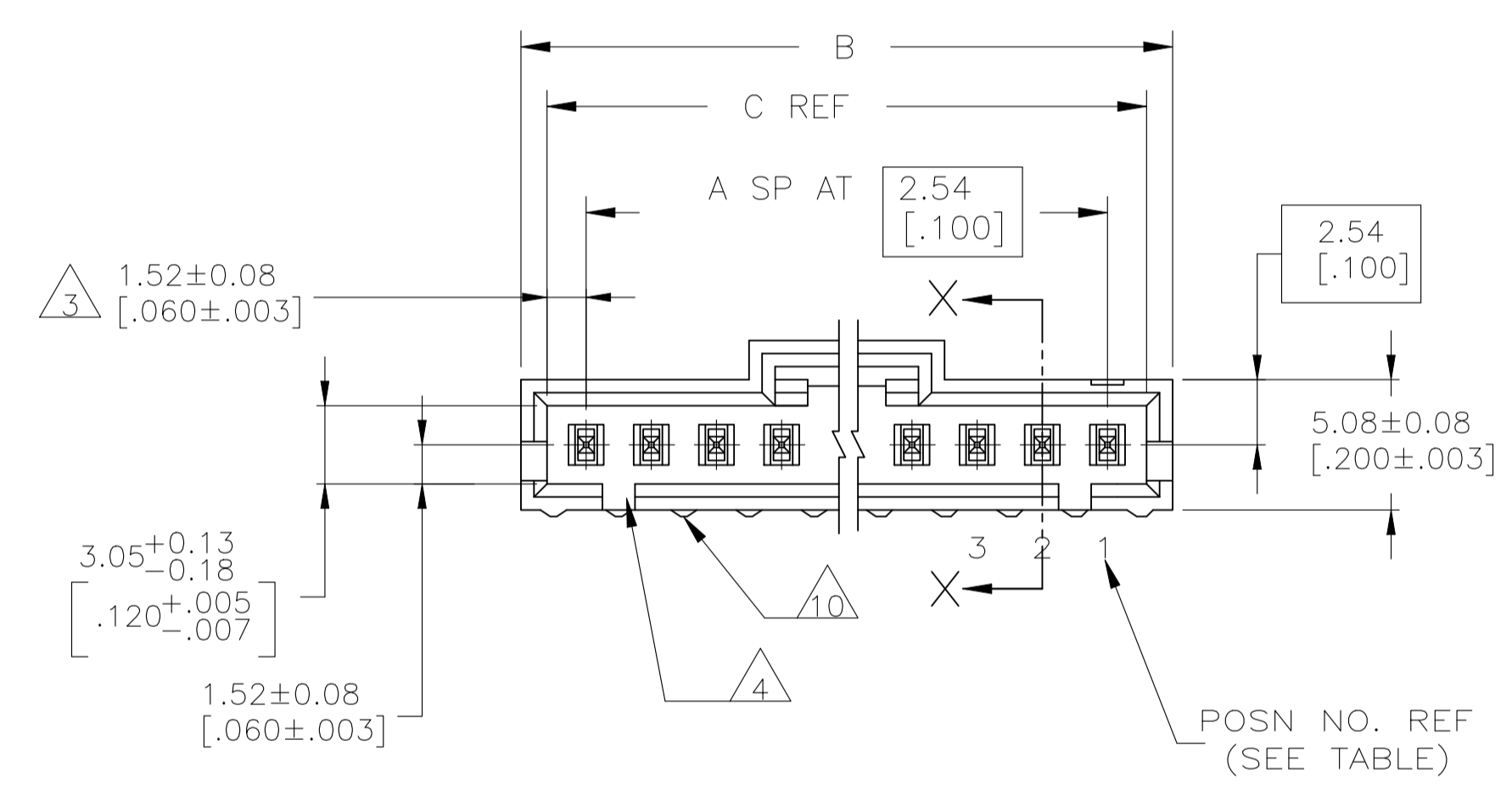
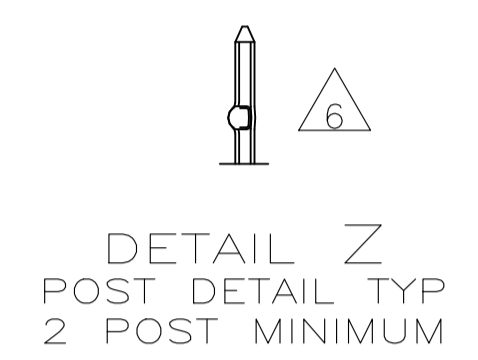
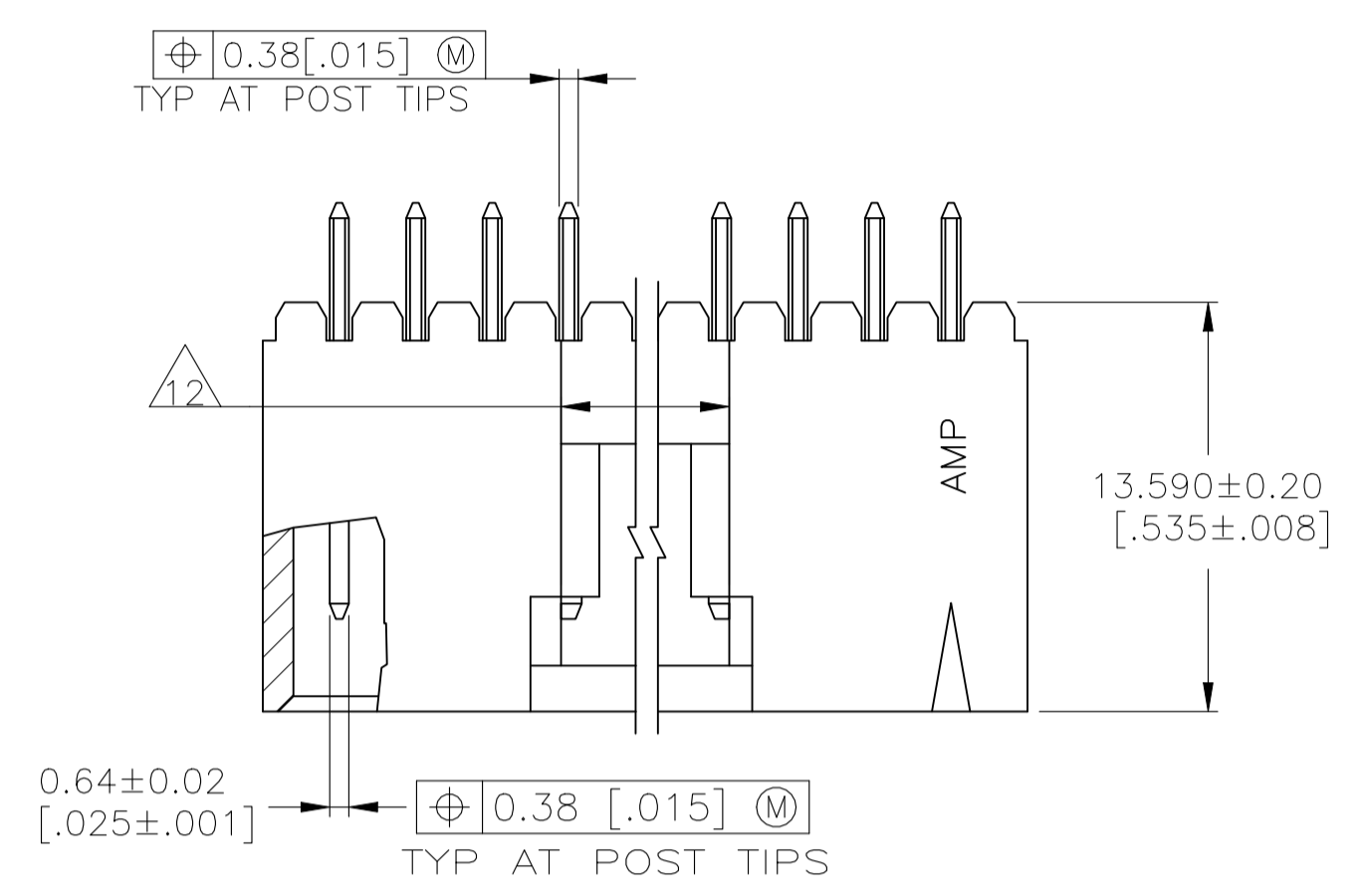


REVISIONS					
REV	DESCRIPTION	DATE	BY	APP'D	
G	REVISED PER ECO-20-001327	05JUN2020	SB	JO	



RECOMMENDED HOLE LAYOUT

- 1 .00038[.000015] GOLD IN THE CONTACT AREA, .00254[.000100] MATTE TIN-LEAD ON REMAINDER OF CONTACT, ALL OVER .00127[.000050] NICKEL.
- 2 POINT OF MEASUREMENT FOR PLATING THICKNESS.
- 3 THE NOTED DIMENSIONS APPLY AT THE INTERSECTION OF THE POST AND THE HOUSING.
- 4 ON ASSEMBLIES WITH FOUR OR MORE POSITIONS, TWO POLARIZATION SLOTS. ON ASSEMBLIES WITH TWO OR THREE POSITIONS, ONE POLARIZATION SLOT.
- 5 HOUSING: FLAME RETARDANT LCP, COLOR-BLACK. CONTACTS: BRASS.
- 6 SELECT POST TAILS FORMED TO PROVIDE CONNECTOR HOLD-DOWN UNTIL SOLDERED. CONFIGURATION ACCEPTS 0.69-2.03 [.027-.080] THICK PRINTED CIRCUIT BOARD.
- 7 PRELIMINARY PART-NOT RELEASED FOR PRODUCTION.
- 8 .00038[.000015] GOLD IN THE CONTACT AREA, .00254[.000100] MATTE TIN ON REMAINDER OF CONTACT, ALL OVER .00127[.000050] NICKEL.
- 9 HIGH TEMPERATURE CONFIGURATION.
- 10 STANDOFFS NOT PRESENT ON UNDERSIDE OF ASSEMBLY.
- 11 OBSOLETE PARTS: OBSOLETE CIS STREAMLINING PER D.RENAUD/D.SINISI
- 12 0.25 [.010] RECESS PERMISSIBLE IN THIS AREA FOR MOLD SHUT OFF

REV	REMARKS	PLATING	POST NUMBER OMITTED	C	B	A	NO. OF POSN	PART NO.	
11/7	OBSOLETE	9/10	8	5,7,9,11,14,17	48.77 [1.920]	50.67 [1.995]	18	19	5-147321-4
11	OBSOLETE	9/10	8	3,6,9,12,15	43.69 [1.720]	45.59 [1.795]	16	17	5-147321-3
11/7	OBSOLETE	9/10	8	2,3,4,5,6	18.29 [0.720]	20.19 [0.795]	6	7	5-147321-2
11	OBSOLETE	9/10	8	4,5	25.91 [1.020]	27.81 [1.095]	9	10	5-147321-1
7		9	1	19	51.31 [2.020]	53.21 [2.095]	19	20	147321-6
7		9	1	2	41.15 [1.620]	43.05 [1.695]	15	16	147321-5
7		9	1	5,7,9,11,14,17	48.77 [1.920]	27.81 [1.095]	18	19	147321-4
		9	1	3,6,9,12,15	43.69 [1.720]	45.59 [1.795]	16	17	147321-3
7		9	1	2,3,4,5,6	18.29 [0.720]	20.19 [0.795]	6	7	147321-2
11	OBSOLETE	9	1	4,5	25.91 [1.020]	27.81 [1.095]	9	10	147321-1

THIS DRAWING IS A CONTROLLED DOCUMENT.

DIMENSIONS: mm [INCHES]
 TOLERANCES UNLESS OTHERWISE SPECIFIED:
 0. PLC ± -
 1. PLC ± -
 2. PLC ± -
 3. PLC ± 0.13[.005]
 4. PLC ± -
 ANGLES ± -
 MATERIAL FINISH SEE TABLE

DIN 92 HAYMAKER 12OCT99
 CJK 12OCT99
 J. MOSIER
 J. MOSIER 12OCT99
 NAME: HDR ASSY,VERT,SINGLE ROW 2.54[.100]C/L.064[.025]SQPOST,WITH PLZN RETENTIVE POSTS, SELECT LOAD,AMP/Modu MTE

SIZE: A1
 CAGE CODE: 00779
 DRAWING NO: 147321
 WEIGHT: -
 CUSTOMER DRAWING

SCALE: 4:1
 SHEET: 1 of 1
 REV: G