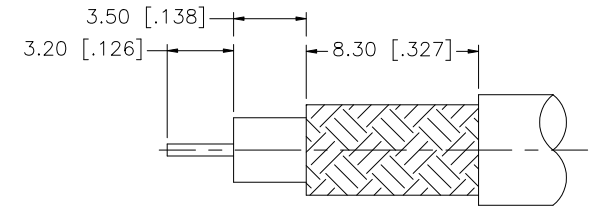
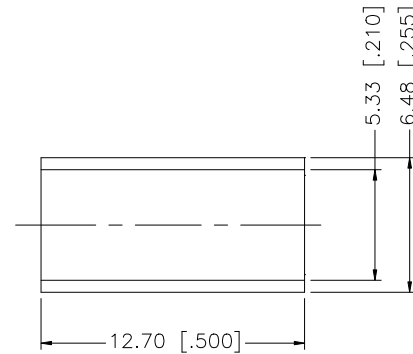
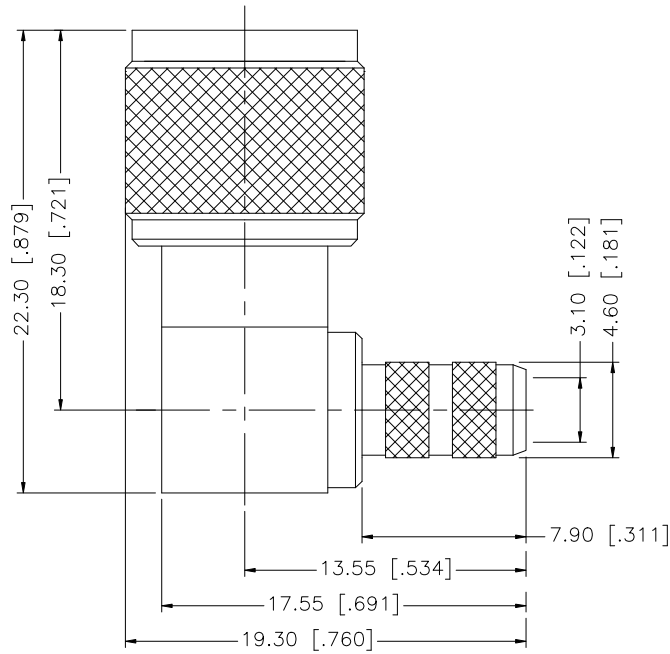
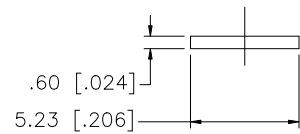


REV.	DATE	ECR NO.	DESCRIPTION
NC	04/30/00	-	INITIAL RELEASE
A	11/22/08	-	UPDATE DRAWING FORMAT



RECOMMENDED CABLE STRIPPING DIM'S



NOTES:

1. CRIMPED FERRULE HEX CRIMP SIZE.213" [5.41]

DESCRIPTION	MATERIAL	FINISH	QTY	DO NOT SCALE DRAWING	APPROVALS	DATE	Amphenol Connex			
8							MINI-UHF R/A CRIMP PLUG (FOR RG-58/U, 58C/U CABLE)			
7										
6										
5	FERRULE	COPPER	NICKEL	1						
4	COVER	BRASS	NICKEL	1			PART NO. 182323			
3	CONTACT PIN	BRASS	GOLD	1			DWG. NO. 182323.DWG			
2	INSULATOR	PTFE	NATURAL	1			REV. A			
1	BODY	BRASS	NICKEL	1			SIZE A			
							SCALE NA			
							C:/182/182323.DWG			

UNLESS OTHERWISE SPECIFIED DIMENSIONS ARE IN MILLIMETERS. DIMENSIONS IN [] ARE IN INCHES AND FOR CUSTOMER REFERENCE ONLY.

UNLESS OTHERWISE SPECIFIED TOLERANCES FOR MILLIMETERS ARE:
0.5 - 8mm ± 0.20mm
8 - 30mm ± 0.40mm
30 - 120mm ± 0.50mm

UNLESS OTHERWISE SPECIFIED TOLERANCES FOR INCHES ARE:
.020 - .315 = ± 0.007"
.315 - 1.180 = ± 0.015"
1.180 - 4.724 = ± 0.020"