

THIS DRAWING IS UNPUBLISHED.

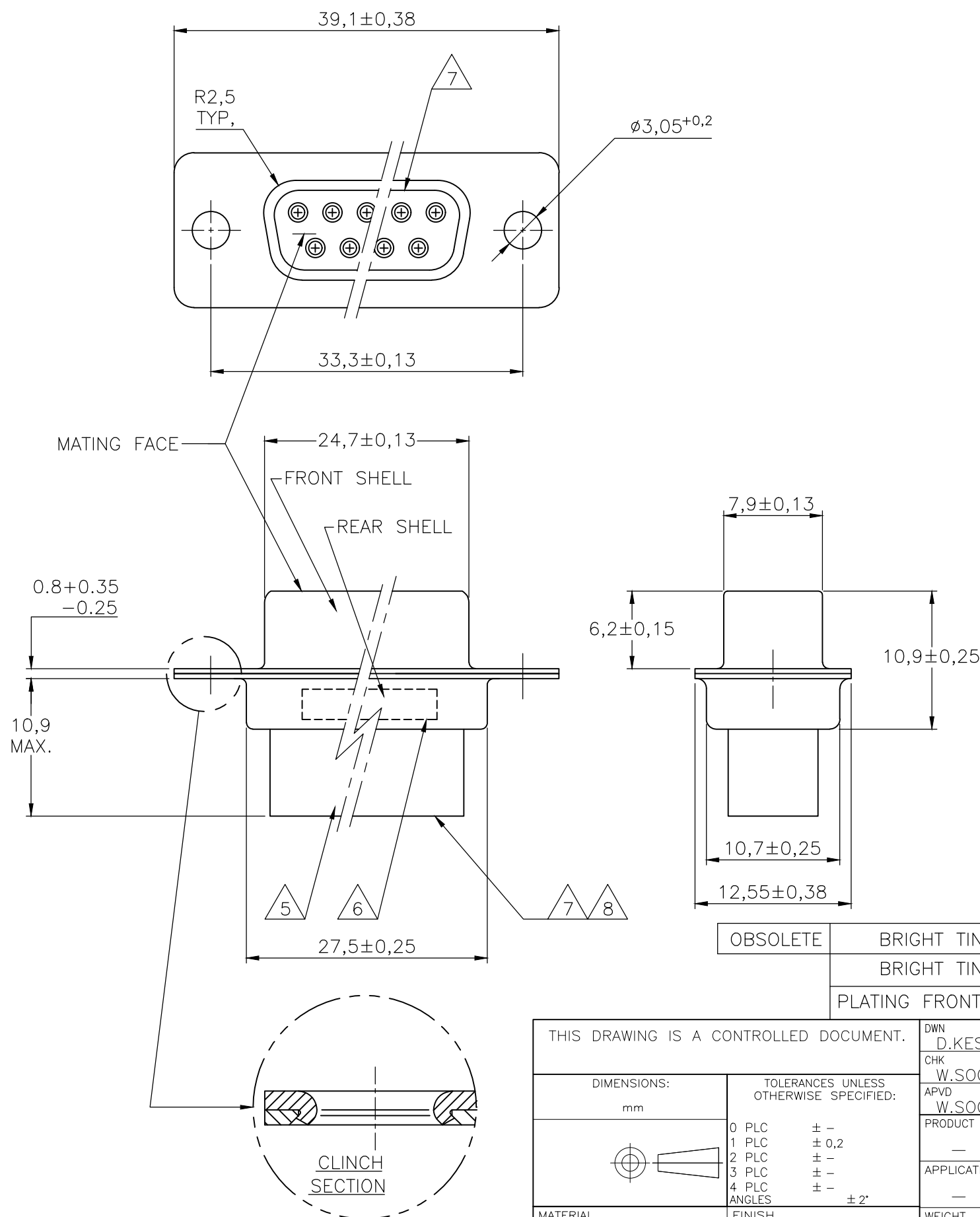
RELEASED FOR PUBLICATION

REVISIONS

© COPYRIGHT - By -

ALL RIGHTS RESERVED.

P	LTR	DESCRIPTION	DATE	DWN	APVD
	S	REVISED PER ECO-17-014522	26APR2018	AP	DG



NOTES:

- 1 THIS RECEPTACLE ACCEPTS SIZE 20 REC. CONTACTS.
  - 2 MAXIMUM WIRE INSULATION RECOMMENDED FOR USE WITH THIS RECEPTACLE IS 1,73 DIA. MAX..
  - 3 RETENTION TINES ARE AN INTEGRAL PART OF INSERT.
  - 4 FOLLOWING INSERTION/REMOVAL TOOLS ARE RECOMMENDED FOR USE WITH THESE CONNECTORS:  
 32-28AWG/28-24AWG CONTACTS  
 91067-3 INSERTION/REMOVAL  
 726363-1 INSERTION ONLY  
 24-20AWG CONTACTS  
 726363-1 INSERTION ONLY  
 726364-1 REMOVAL ONLY
- 5 INSERTS: GLASSFILLED SELF-EXTINGUISHING PBT, COLOR BLACK.  
 6 TE, PARTNUMBER AND DATE CODE; INK STAMPED.  
 7 RAISED CAVITY IDENTIFICATION 0,8 HIGH.  
 8 RAISED CAVITY IDENTIFICATION NUMBERS ON WIRE SIDE ARE WHITENED FOR 164532-9.

OBSOLETE	BRIGHT TIN	BRIGHT TIN	STEEL	164532-9	8
	BRIGHT TIN	BRIGHT TIN	STEEL	164532-4	
	PLATING FRONT SHELL	PLATING REAR SHELL	MATERIAL SHELLS	PARTNUMBER	

THIS DRAWING IS A CONTROLLED DOCUMENT.		DWN	D.KESSLER		11FEB99
DIMENSIONS: mm		CHK	W.SOOMERS		-
TOLERANCES UNLESS OTHERWISE SPECIFIED:		APVD	W.SOOMERS		-
0 PLC	± -	PRODUCT SPEC	NAME		
1 PLC	± 0,2	APPLICATION SPEC	-		
2 PLC	± -	WEIGHT	SIZE	CAGE CODE	DRAWING NO
3 PLC	± -		A3	-	C-164532
4 PLC	± -		RESTRICTED TO		
ANGLES	± 2°		-		
MATERIAL	FINISH		CUSTOMER DRAWING		
-	-		SCALE	SHEET	REV
			NTS	1 OF 1	S



15 POS HDP-20 RECEPTACLE CONNECTOR SIZE 2