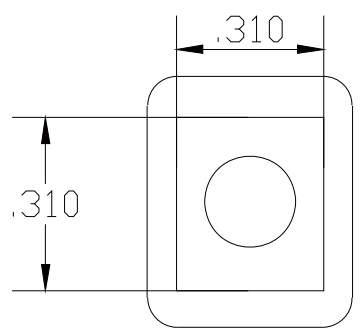
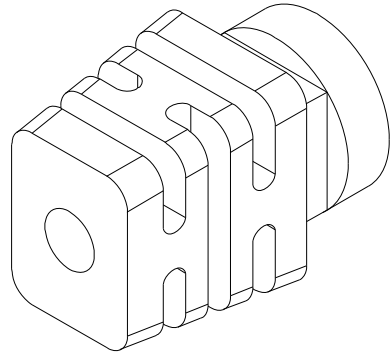
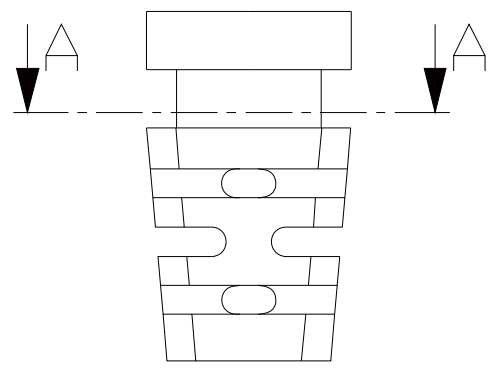
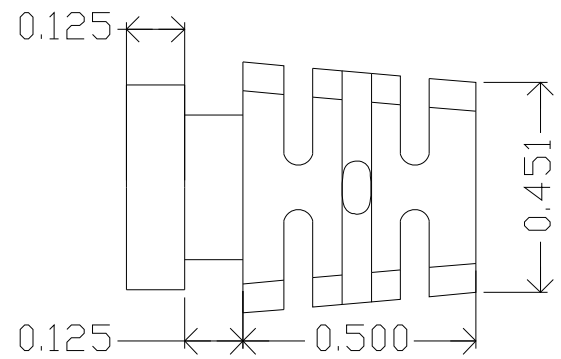
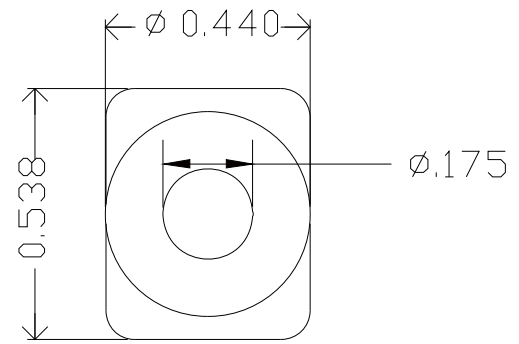


ZONE		REV.	REVISIONS DESCRIPTION	DATE	APPROVED

ISC ENGINEERING
CONTROLLED COPY
 Rich Fierro 02/08/2018



MOLD MATERIAL: ISC P/N: 5000214, PVC, M1472, BLACK

Dimensions are subject to change.
 PROPRIETARY AND CONFIDENTIAL
 THE INFORMATION CONTAINED IN THIS DRAWING IS THE SOLE PROPERTY OF ISC ENGINEERING. ANY REPRODUCTION IN PART OR AS A WHOLE WITHOUT THE WRITTEN PERMISSION OF ISC ENGINEERING IS PROHIBITED.

		DIMENSIONS ARE IN INCHES	NAME	DATE	ISC Engineering 4351 Schaefer Ave, Chino, CA 91710 Ph: 909-596-3315 Fax: 909-596-3335 www.iscengineering.com www.overmoldtooling.com
		TOLERANCES:	DRAWN	08/13/04	
		FRACTIONAL ±	CHECKED		
		ANGULAR: MACH ± BEND ±	ENG APPR		
		TWO PLACE DECIMAL ±	MFG APPR		
		THREE PLACE DECIMAL ±	Q.A.		
		MATERIAL --	COMMENTS:		1465080-175-E-310X310-440-0
		FINISH --			SIZE DWG. NO. 1467269
NEXT ASSY USED ON					REV.
APPLICATION		DO NOT SCALE DRAWING			SCALE: 5:1 WEIGHT: SHEET 1 OF 1