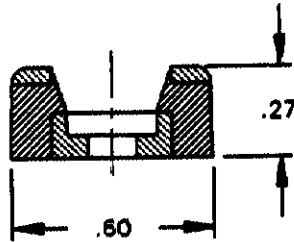
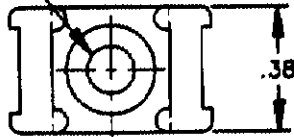


608801

.14 DIA HOLE FOR #6 SCREW



NOTE: ACCOMMODATES CABLE TIES WITH TENSILE VALUE OF 50 LBS. MAXIMUM.

THIS INFORMATION IS CONFIDENTIAL AND IS DISCLOSED TO YOU ON CONDITION THAT NO FURTHER DISCLOSURE IS MADE BY YOU TO OTHER THAN AMP PERSONNEL WITHOUT WRITTEN AUTHORIZATION FROM AMP INCORPORATED, HARRISBURG, PA.

CUSTOMER DRAWING UNPUBLISHED

608801-1

AS SHOWN - PACKAGED 100 PER SEALED POLY BAG WITH LABEL TO CONTAIN AMP P/N, DESCRIPTION, QUANTITY, DATE CODE, AND U.I. RECOGNITION MARK.

LOC	D		DWG SIZE	PART No.	DESCRIPTION		
DIST	1		REVISION OF EACH ASSY NO. (WHEN BLANK, USE DWG REVISION)				
QTY. REQ'D. PER ASSY.			PARTS LIST				
			MATERIAL	HEAT TREAT	FINISH		
			NYLON - WHITE	<i>~</i>	<i>~</i>		
			DIMENSIONS ARE IN INCHES		DRAWN BY:	DATE:	APPROVED BY:
			TOLERANCES UNLESS OTHERWISE SPECIFIED:		<i>M.J. JULESINSKI</i>	9/2/90	
			2 PL DEC ± .02		CHECK BY:		RELEASE:
			3 PL DEC ±		<i>J. Hanel 9-14-90</i>		
			4 PL DEC ±		AMP AMP INCORPORATED Harrisburg, Pa.		
			ANGLES ±				
			SURF TEXTURE: <i>✓</i>		NAME: 2 WAY CABLE TIE MOUNT		
			REMOVE BURRS, BREAK SHARP EDGES, .015 R. MAX.		#6 SCREW HOLE, W/O ADHESIVE		
O ECN 082990			F.H. 9/90		SCALE: A		DRAWING No.: 608801
P	F	LTR	REVISION RECORD		A.P	DATE	SHEET: 1 of 1
							REV.: 0