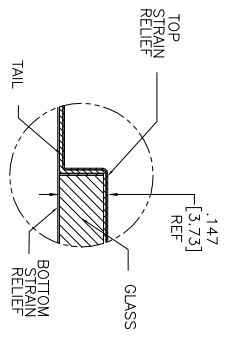
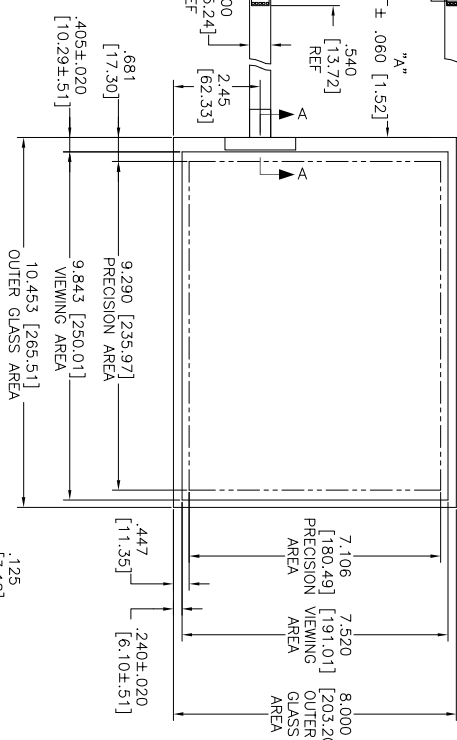
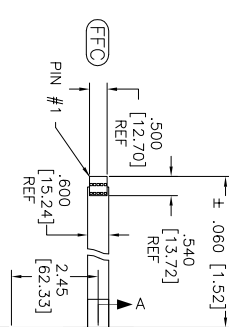
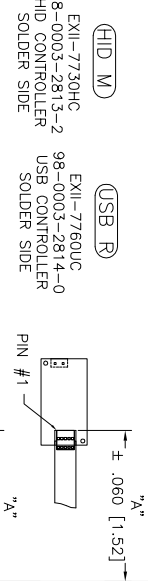
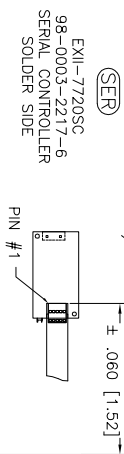
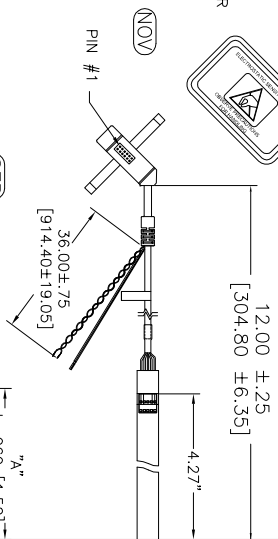


OGA DIAGONAL: 13.16 [334.34]  
 VA DIAGONAL: 12.39 [314.63]  
 PA DIAGONAL: 11.70 [297.08]



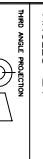
NOTES:

1. WEIGHT OF GLASS IN GRAMS: 411 ± 10% HOUSING ORIENTED WITH LATCH DOWN

PINOUT
1 LR
2 LL
3 SHLD
4 UL
5 UR

TOP LEVEL NUMBER	US NUMBER	CHINA NUMBER	TYPE	DM "A" (TOTAL GLASS TO CONNECTOR)	A/G FINISH	PROD SPEC
17-8581-203	98-0003-2633-4	59-0000-0156-6	FEC	4.27" [108.46]	AG500	23655
17-8581-205	98-0003-2634-2	N/A	FEC	8.00" [203.20]	AG500	23655
17-8581-206	98-0003-2635-9	N/A	NOV	SEE DWG	AG500	23655
17-8581-221	98-0003-2637-5	59-0000-0158-2	SER	4.27" [108.46]	AG500	23655
17-8581-227	98-0003-2639-1	N/A	SER	8.00" [203.20]	AG500	23655
17-8581-218	98-0003-3272-0	59-0000-0157-4	USB R	4.27" [108.46]	AG500	23655
17-8581-230	98-0003-2994-0	59-0000-0159-0	HID M	8.00" [203.20]	AG500	23655

UNITS	INCHES [MM]
TOLERANCES UNLESS OTHERWISE SPECIFIED	
X .XX	± .03 [.76]
.XXX	± .015 [.38]
ANGLES	± 1°



DO NOT SCALE DRAWING  
 SCALE 1 = 1

© COPYRIGHT 2004 3M TOUCH SYSTEMS USA  
 THIS DOCUMENT IS THE PROPERTY OF THE COMPANY AND IS NOT TO BE REPRODUCED OR TRANSMITTED IN ANY FORM OR BY ANY MEANS, WITHOUT THE WRITTEN PERMISSION OF THE COMPANY.  
 DMW K CROWLEY 9/05

MARKETING DRAWING  
 SCT32N 12.39"

REV	DATE	BY	CHKD	APPV
J	1/12	SB		
H	8/11	SEB		
07	6/09	SB		

DO (FORM)	DOCUMENT NO.	SHEET	OF
AUTOCAD	28159-MKT	1	1