

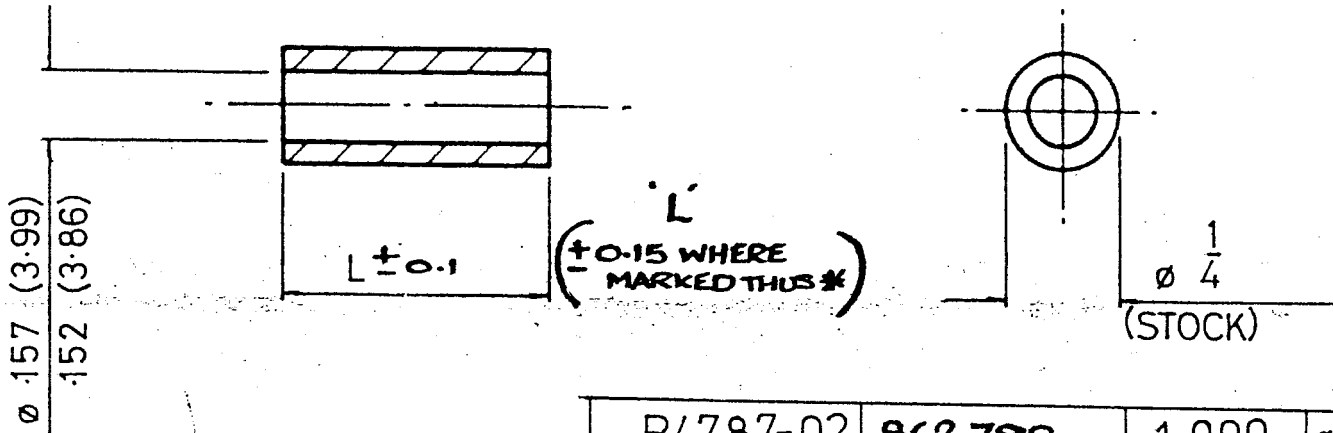
DRAWING NUMBER

R4780-02 —  
R4787-02



THIRD ANGLE PROJECTION

DO NOT SCALE



(±0.15 WHERE MARKED THIS\*)

NOTE

1 HOLE TO BE MANU IN ACCORDANCE WITH BS 57 1951

0.25 CHAMFER ON O.D & I.D. TO REMOVE SHARP EDGES.

R4787-02	862.798	1.000	*25.4	14	2.10.91	1890
R4786-02	759.724	.875	*22.22	13	11/81	1081
R4785-02	656.325	.750	*19.05	12	8/2/86	932
R4784-02	553.251	.625	*15.88	11	5-3-79	FINISH WAS DTD 4/9
R4783-02	449.852	.500	12.70	10	31-10-78	WAS MA1091 TO MA1097
R4782-02	346.452	.375	9.52	4	55-72	081
R4781-02	243.378	.250	6.35	ISS.	DATE	CHANGE
R4780-02	140.178	.125	3.18	APPD.		
PART NO	SURFACE AREA MM <sup>2</sup>	IN	mm	CHKD.		
		L		DRAWN		
				OLD REF.	R4080 - R4086	
				ASSY. DRAWING		

HARWIN ENGINEERS S.A.

PORTSMOUTH POB IRT

MATERIAL BRASS B52874 GZ121 P63 ANNEALED

TITLE See Permit P094-2012

CLEARANCE SPACER - ROUND

FINISH FO2O3 (NICKEL PLATE)

TOLERANCES  
FRAC. ± 1/64 DEC ± 0.05 MM ±  
DIMS. IN INCH mm SCALE —

DRAWING NUMBER  
R4780-02 —  
R4787-02