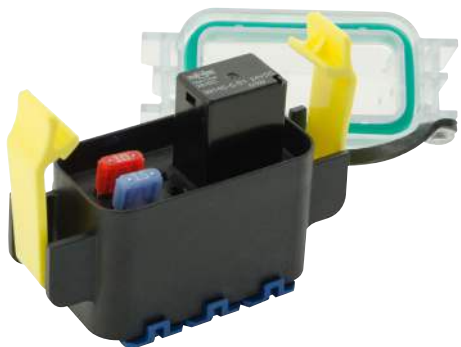


HWB12 SERIES

58 V 135 A Hard-Wired Waterproof DC Power Distribution Box for MINI® Fuses, Circuit Breakers & Relays



PDM32001ZXM

Description

Ideal for use as the main unit on small vehicles or for accessory circuits and overflow circuits from your main power distribution module (PDM), the compact HWB12 Series 58 V 135 A Hard-Wired Waterproof DC Power Distribution Box accepts MINI® fuses, MINI® circuit breakers, 4-pin single-pole, single-throw (SPST) relays, and 5-pin single-pole, double-throw (SPDT) relays and MCASE™ fuses (adapter required; sold separately).

This hard-wired PDM allows you to customize your own circuitry utilizing direct wire-to-component connections which are crimped to the wire harness with grommets to seal the bottom of the module. Terminal position assurance locks offer secondary protection to keep the wires in place. The HWB12 series uses TYCO MCP terminals, cable seals, and cavity plugs.

Available with a clear or black cover with a gasket, this dust-tight, waterproof power distribution box carries an IP67 rating, and it features AssureLatch™ positive-sealing latches that keep the cover securely in place. The clear cover option lets you easily see the condition of the installed fuses, and the black cover offers a full UL 94 V-0 flammability rating for applications that require it. An available tether (sold separately) helps prevent loss of the cover during service.

Web Resources

Download 2D print, installation guide and technical resources at: littelfuse.com/HWB12

Ordering Information

PART NUMBER	DESCRIPTION	HOUSING	MOUNTING HOLE	MOUNTING METHOD
PDM33001ZXM	Six-Component MINI® Hard-Wired Waterproof DC Power Distribution Box with Clear Cover	Black Thermoplastic Base 94-V0, Clear Cover 94-V2	-	Without mounting bracket
PDM33002ZXM	Six-Component MINI® Hard-Wired Waterproof DC Power Distribution Box with Black Cover	Black Thermoplastic Base 94-V0, Clear Cover 94-V2	-	Without mounting bracket
PDM33003ZXM	Six-Component MINI® Hard-Wired Waterproof Power Distribution Box with Clear Cover & Straight Bracket	Black Thermoplastic Base 94-V0, Clear Cover 94-V0	6.5	Mounting bracket ø6.5
PDM33004ZXM	Six-Component MINI® Hard-Wired Waterproof Power Distribution Box with Black Cover & Straight Bracket	Black Thermoplastic Base 94-V0, Clear Cover 94-V0	6.5	Mounting bracket ø6.5
868-964	90° Mounting Bracket for HWB6, HWB12, and HWB18 Hard-Wired Power Distribution Boxes	-	-	-
868-068	30° Mounting Bracket for HWB6, HWB12, and HWB18 Hard-Wired Power Distribution Boxes	-	-	-
883-087	Terminal Position Assurance (TPA) Locks for HWB12 Series	-	-	-
901-326	Gasket for HWB12 Hard-Wired Power Distribution Box	-	-	-
901-327	Foam Insert for Relay Retention	-	-	-

Specifications

Max Voltage Rating Continuous:	58 VDC
Max Voltage Rating	58 VDC
Max Total Continuous Current:	30 A (per circuit @75% of the fuse rating) 135 A Total
Operating Temp Range:	-40 °C to + 105 °C
Ingress Protection:	IP67
Input Terminals:	TE Connectivity MCP Series
Fuse Type:	MINI Fuse, MINI Circuit Breaker, 4-Pin SPST and 5-Pin SPDT Relays

Applications

- Work Trucks and Specialty Equipment
- Emergency Vehicles
- Construction Site Support Equipment
- Oil and Gas Drilling Equipment
- Marine Vehicles and Equipment

Features and Benefits

- Holds six MINI® fuses or a combination of MINI® fuses, MINI® circuit breakers, 4-pin SPST relays, and 5-pin SPDT relays and MCASE™ fuses (adapter required; sold separately)
- 135 A maximum total continuous current
- Clear or black cover is sealed with a gasket to an IP67 rating to deliver a waterproof power distribution box that is safeguarded from dust, moisture, and debris
- AssureLatch™ positive-sealing latches keep the cover securely in place while allowing for fast service
- Thermoplastic base with a UL 94 V-0 flammability rating
- Terminal position assurance locks help prevent disconnection of wires due to vibration and accidental snagging
- Optional foam insert available for relay retention
- High-temperature gore vents allow heat and pressure to be released while maintaining IP ratings