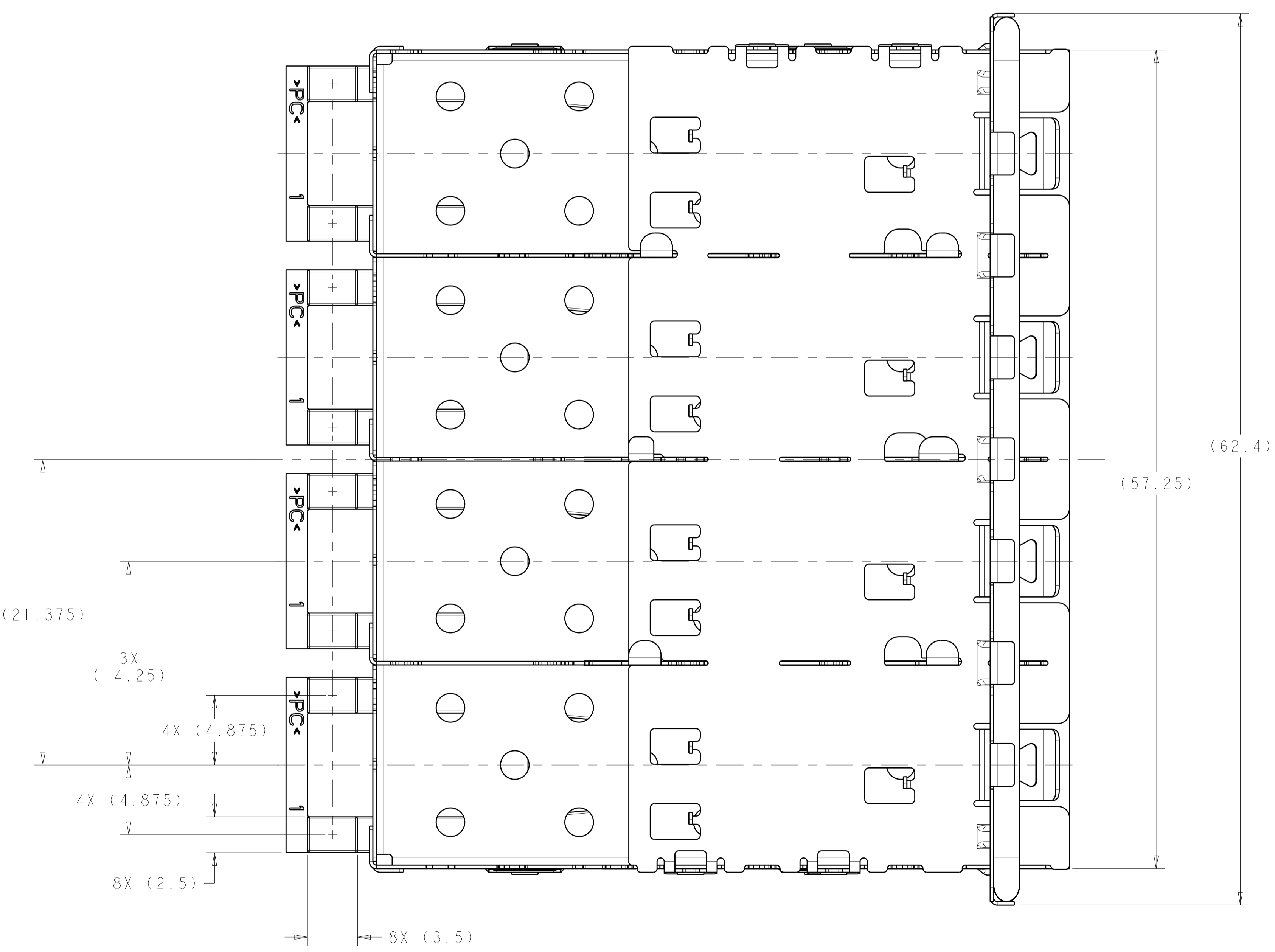
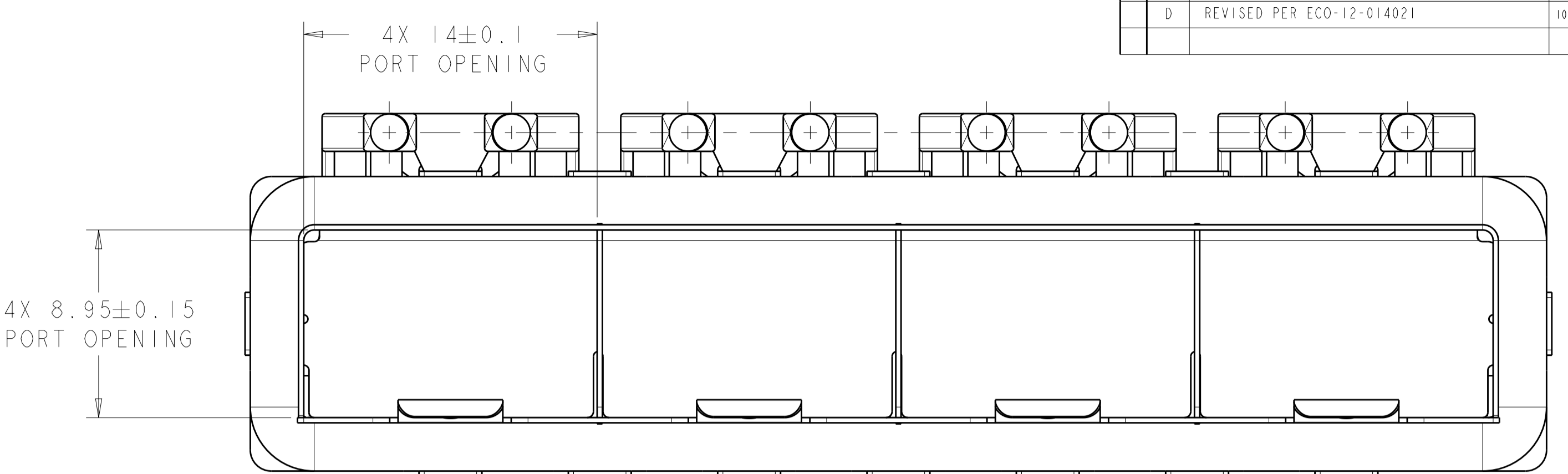
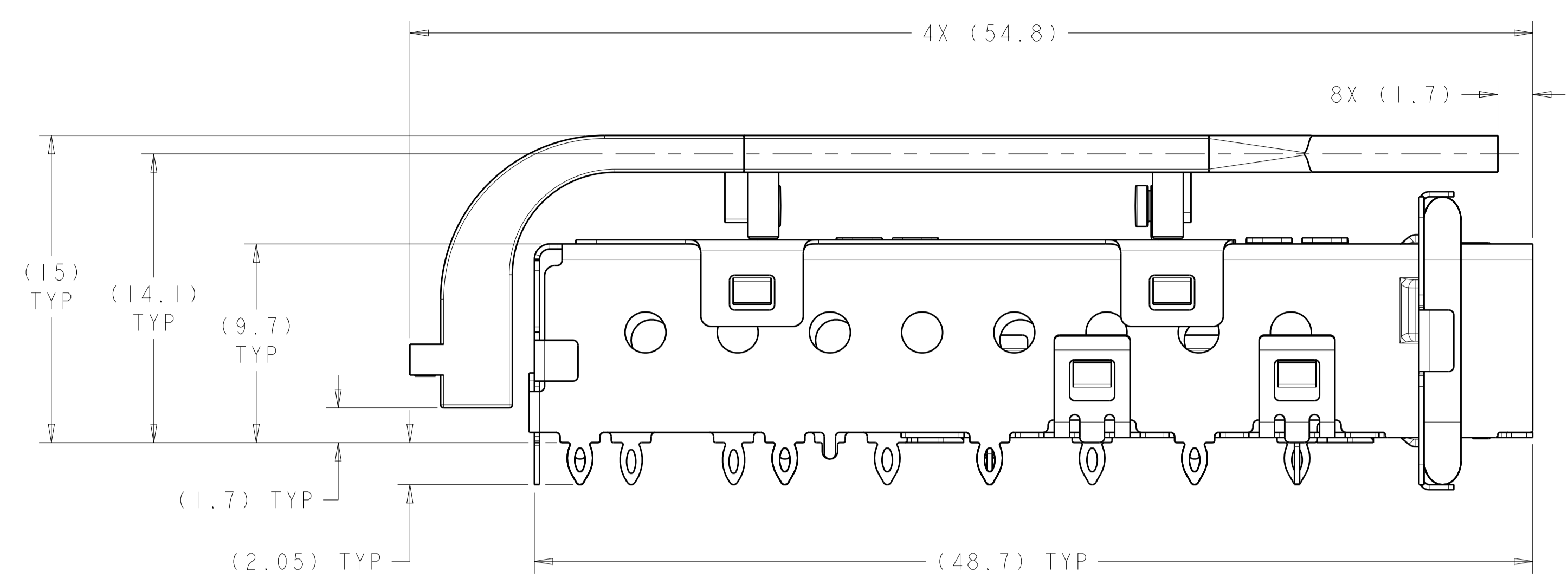
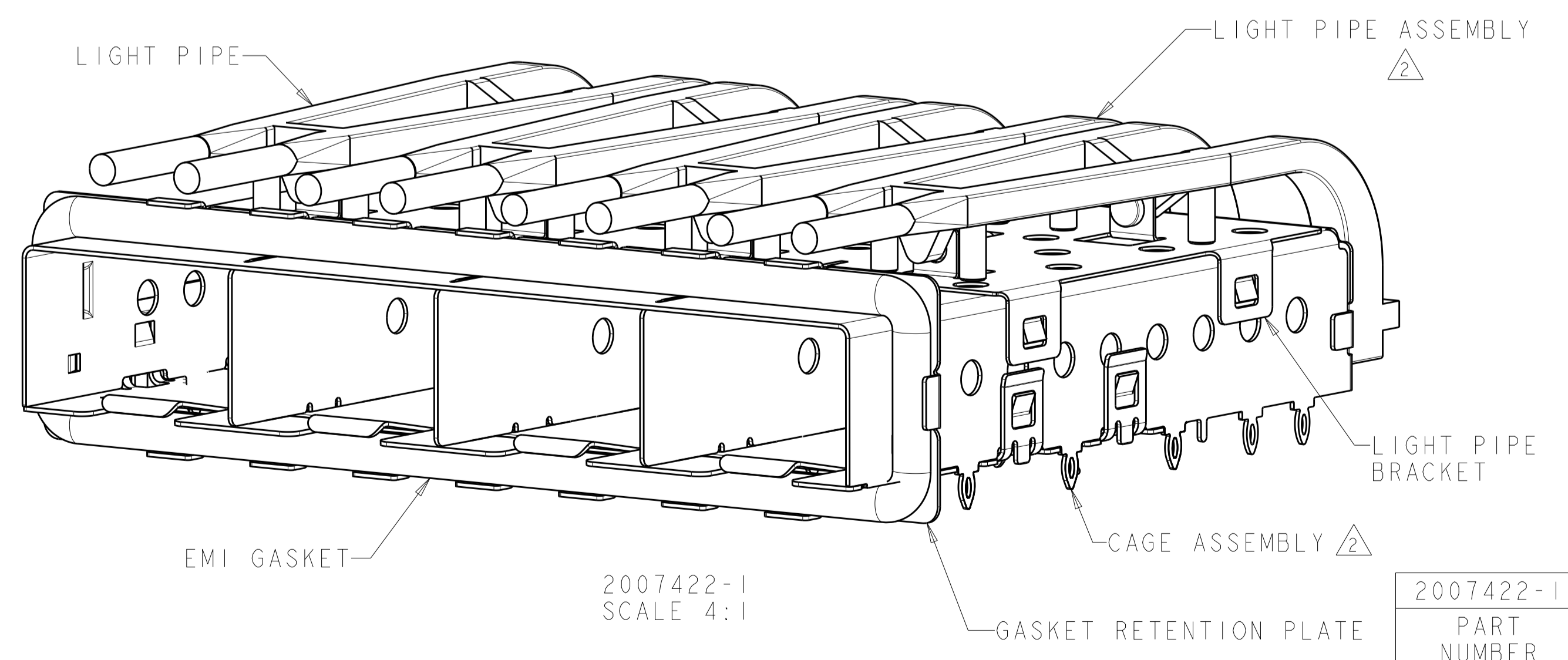


LOC		DIST		REVISIONS			
GP	00	P	LTN	DESCRIPTION	DATE	DMN	APVD
		B		REVISED PER ECO-09-022874	9OCT2009	ZMR	MRS
		C		REVISED PER ECO-10-004036	01MAR2010	CJV	MRS
		D		REVISED PER ECO-12-014021	10DEC2012	TD	AC



- 1 MATERIAL:  
 CAGE ASSEMBLY: 0.25 THICK NICKEL SILVER ALLOY  
 GASKET RETENTION PLATE: STAINLESS STEEL  
 GASKET: PLATED FILLED SILICONE  
 LIGHT PIPE BRACKET: STAINLESS STEEL  
 LIGHT PIPE: POLYCARBONATE, CLEAR
- 2 2007135-1, CAGE ASSEMBLY, AND 2007099-1, LIGHT PIPE ASSEMBLY ARE PACKAGED TOGETHER AS A COMPLETED ASSEMBLY.
- 3 PADS AND VIAS CHASSIS GROUND.
- 4 DATUM AND BASIC DIMENSION ESTABLISHED BY CUSTOMER.
- 5. MATES WITH SFP MSA COMPLIANT TRANSCEIVERS.
- 6. INTERPRETATION OF DATUM REFERENCE FRAME IN ACCORDANCE WITH SECT 4.4.1.1 OF ASME Y14.5M-1994.
- 7 REFERENCE APPLICATION SPEC. 114-13120, HOLE A, FOR RECOMMENDED DRILL HOLE DIAMETER AND PLATING THICKNESS.
- 8 REFERENCE APPLICATION SPEC. 114-13120, HOLE B, FOR RECOMMENDED DRILL HOLE DIAMETER AND PLATING THICKNESS.
- 9 HOLE PATTERN REPEATS FOR EACH PORT. SPACING BETWEEN PORTS IS 14.25mm.
- 10 MINIMUM PC BOARD THICKNESS = 1.50mm.
- 11. PRODUCT COMPLIES WITH SPECIFICATION SFF-8433 IMPROVED PLUGGABLE FORM FACTOR FOR SFP+ GANGED CAGES.



2007422-1  
SCALE 4:1

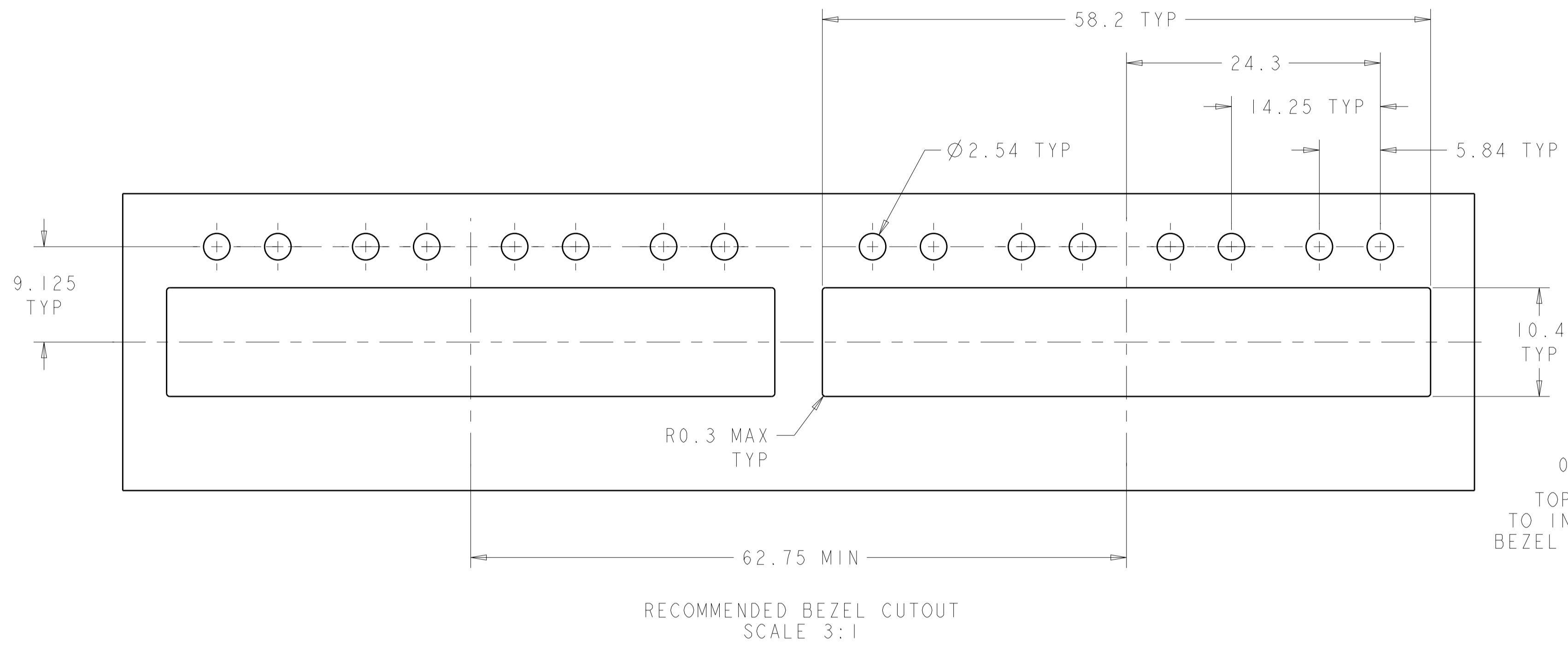
2007422-1  
PART NUMBER

THIS DRAWING IS A CONTROLLED DOCUMENT.		DMN Z. M. BEAM 6NOV2007	TE Connectivity
DIMENSIONS: mm		CHK M. R. SCHMITT 6NOV2007	
TOLERANCES UNLESS OTHERWISE SPECIFIED:		APVD R. H. WERTZ 6NOV2007	NAME SFP+ 1X4 CAGE ASSEMBLY PRESS FIT, EMI GASKET WITH LIGHT PIPES
0 PLC	±0.1	PRODUCT SPEC	SIZE A1
1 PLC	±0.5	108-2364	CAGE CODE 100779
2 PLC	±0.5	APPLICATION SPEC	DRAWING NO 2007422
3 PLC	±0.5	114-13120	RESTRICTED TO
4 PLC	±0.5	WEIGHT	Customer Drawing
ANGLES	±1°	SCALE	1:1
MATERIAL	FINISH	SHEET	1 OF 3
		REV	D

LOC	DIST	REV	DATE	BY	APPV
GP	00				

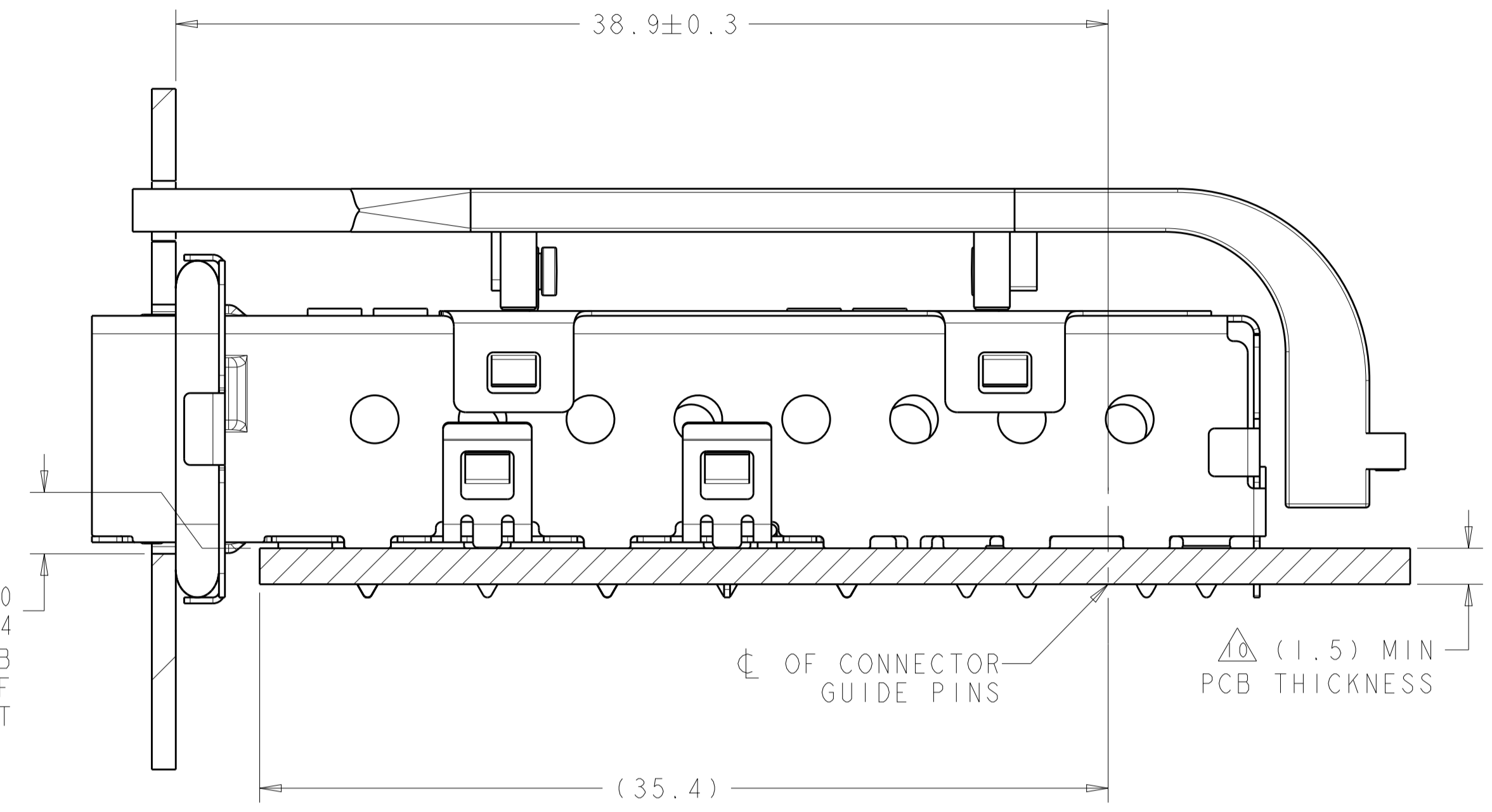
  

REVISIONS			
REV	DATE	BY	APPV
-	-	-	-
-	-	-	-

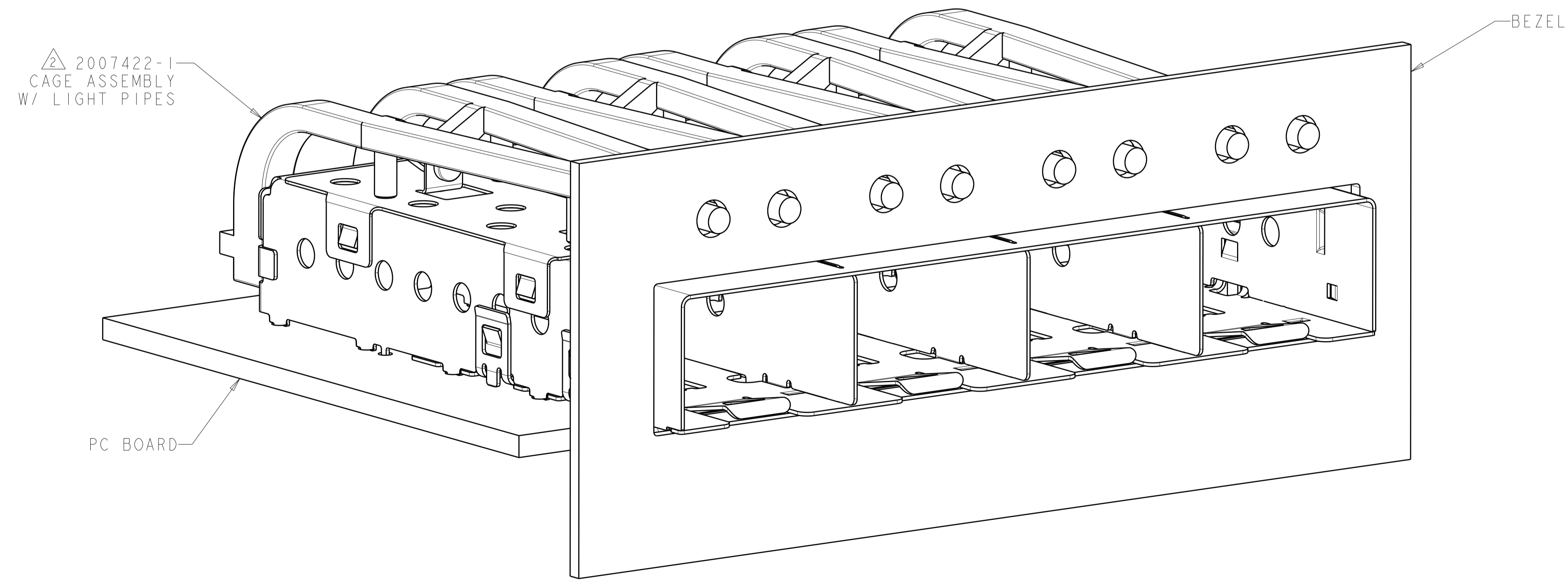


0.23<sup>+0.10</sup><sub>-0.14</sub>  
TOP OF PCB  
TO INSIDE OF  
BEZEL CUT-OUT

RECOMMENDED BEZEL CUTOUT  
SCALE 3:1



2007422-1  
MOUNTED ON PC BOARD  
SHOWN THRU RECOMMENDED BEZEL  
SECTION

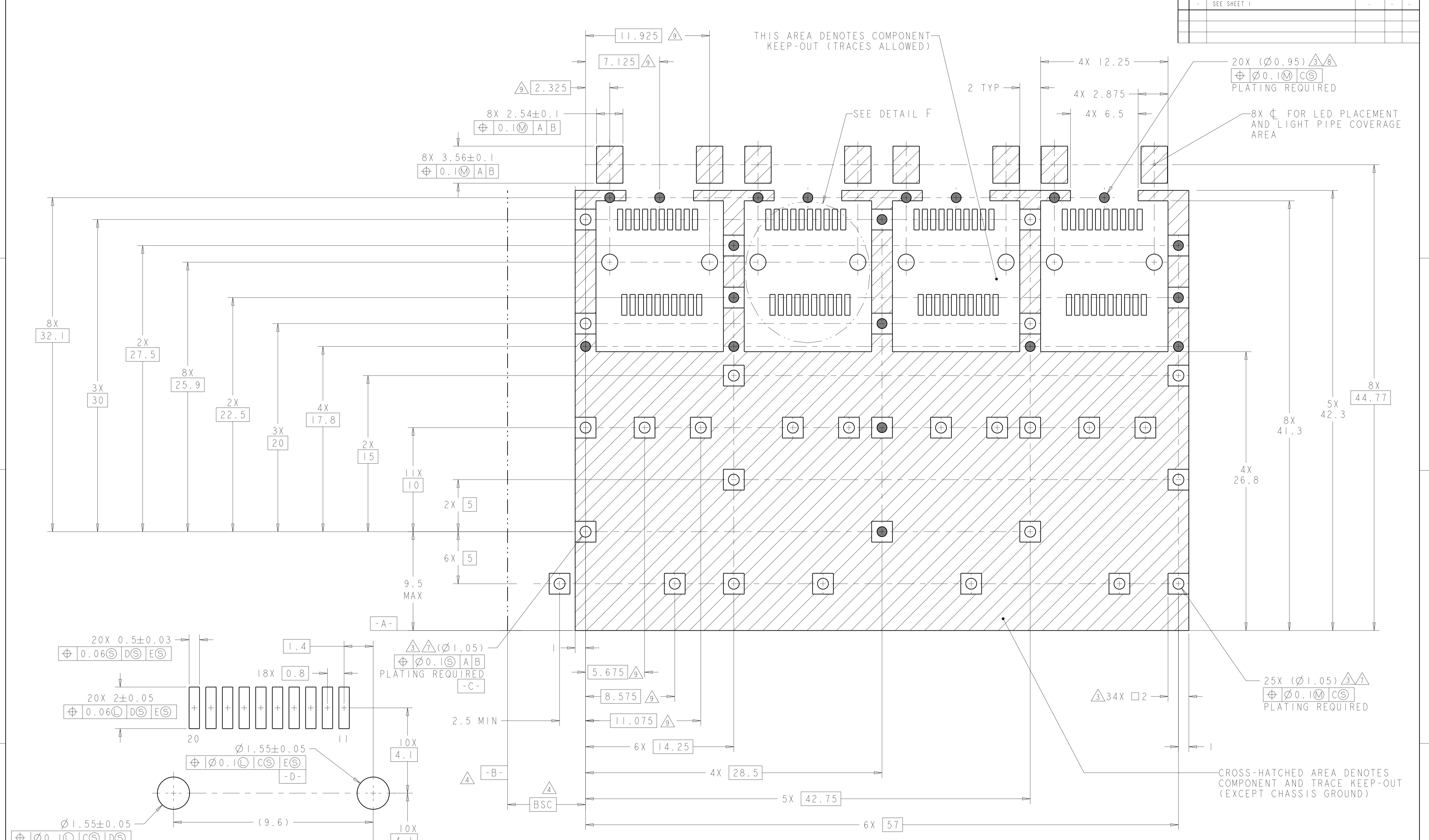


2007422-1  
MOUNTED ON PC BOARD  
SHOWN THRU RECOMMENDED BEZEL

THIS DRAWING IS A CONTROLLED DOCUMENT.		OWN: Z.M.BEAM 6NOV2007	TE Connectivity
DIMENSIONS: mm		CHK: M.R.SCHMITT 6NOV2007	
TOLERANCES UNLESS OTHERWISE SPECIFIED:		APPV: R.H.WERTZ 6NOV2007	
0 PLC ±0.1 1 PLC ±0.5 2 PLC ±0.5 3 PLC ±0.5 4 PLC ±0.5 ANGLES ±1°		NAME: SFP+ 1X4 CAGE ASSEMBLY PRESS FIT, EMI GASKET WITH LIGHT PIPES PRODUCT SPEC: 108-2364 APPLICATION SPEC: 114-13120 WEIGHT: - RESTRICTED TO: -	
MATERIAL: -	FINISH: -	Customer Drawing	SIZE: A1 CAGE CODE: 00779 DRAWING NO: 2007422 SCALE: 5:1 SHEET: 2 OF 3 REV: D

THIS DRAWING IS UNPUBLISHED. RELEASED FOR PUBLICATION  
 ALL RIGHTS RESERVED.

LOC		DIST		REVISIONS			
GP	00	P	LTH	DESCRIPTION	DATE	DMN	APVD
		-		SEE SHEET 1			



DETAIL F  
 RECOMMENDED PT CONNECTOR LAYOUT  
 4X INDIVIDUALLY  
 SCALE 12:1

THIS DRAWING IS A CONTROLLED DOCUMENT.		DMN: Z.M.BEAM 6NOV2007 CHK: M.B.SCHMITT 6NOV2007 APVD: B.H.WERTZ 6NOV2007		TE Connectivity
DIMENSIONS: mm		TOLERANCES UNLESS OTHERWISE SPECIFIED:		
		0 PLC ±0.1 1 PLC ±0.5 2 PLC ±0.5 3 PLC ±0.5 4 PLC ±0.5 ANGLES ±1°		
MATERIAL: .		FINISH: .		
PRODUCT SPEC: 108-2364		APPLICATION SPEC: 114-13120		<b>NAME</b> SFP+ 1X4 CAGE ASSEMBLY PRESS FIT, EMI GASKET WITH LIGHT PIPES
SIZE: A1		CAGE CODE: 100779		
DRAWING NO: 2007422		DATE: 6NOV2007		
Customer Drawing		SCALE: 1:1	SHEET: 3 of 3	REV: D