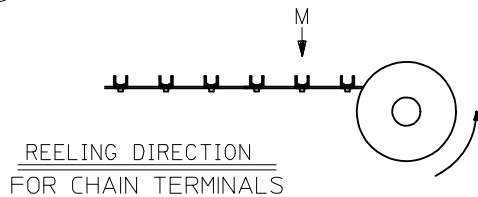
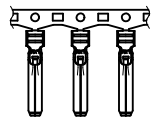
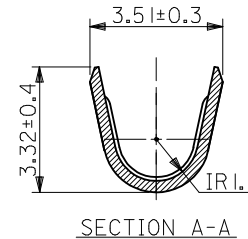
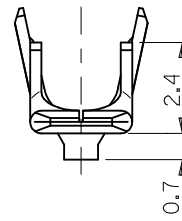
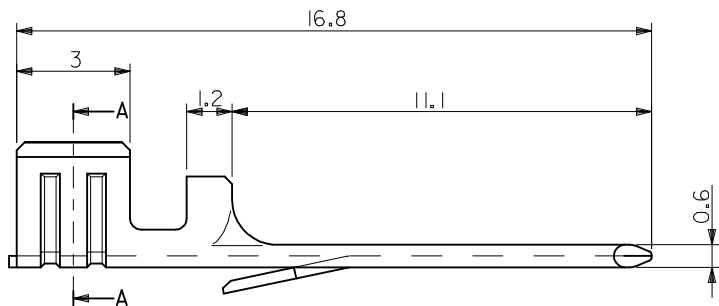
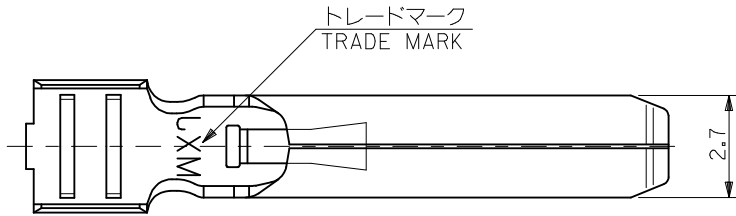


注記  
NOTES

1. 材質  
MATERIAL  
黄銅 (板厚: 0.3)  
BRASS (THICKNESS : 0.3)
2. メッキ仕様  
TERMINAL PLATING  
接点部 : 金メッキ 0.25 μm MIN.  
CONTACT AREA : GOLD 0.25 μm MIN.  
圧着部 : 錫メッキ 1.0 μm MIN.  
CRIMP AREA : TIN 1.0 μm MIN.  
下地メッキ : ニッケルメッキ 2 μm MIN.  
UNDER PLATE : NICKEL 2 μm MIN.
3. 適用電線範囲: UL 1015, AWG #18~14  
APPLICABLE WIRE RANGE : UL1015, AWG#18~14
4. 被覆外径 : φ3.8 MAX.  
INSULATION EXTERNAL DIA : φ3.8 MAX.
5. 適用ハウジング: 55890-\*\*\*\*, 55891-\*\*\*\*  
APPLICABLE HOUSING : 55890-\*\*\*\*, 55891-\*\*\*\*
6. 適用圧着工具 (手動) : 57413-5300 (適用電線: AWG #16~14)  
APPLICABLE CRIMP TOOL (HAND) : 57413-5300 (APPLICABLE WIRE AWG #16~14)  
: 57413-5400 (適用電線: AWG #18)  
: 57413-5400 (APPLICABLE WIRE AWG #18)  
: 63819-2200 (AWG #18-14)
7. TERMINAL EXTRACTION TOOL : 63813-2800
8. 本製品は 56193-4185 の鉛フリー品である。  
THIS PRODUCT IS LEAD FREE OF 56193-4185.



CHAIN	56193-4028	56193-4***
バラ状 LOOSE	56193-4128	56193-4***
端子形状 TERMINAL CONFIGURATION	MATERIAL No.	MODEL No.

ADDED CHAIN TERM. EC NO: WNA2009-0729 DRWN: TMOELLER 2009/05/06 CHKD: RDEROSS 2009/05/07 APPR: RDEROSS 2009/05/07	GENERAL TOLERANCES (UNLESS SPECIFIED)		DIMENSION STYLE MM ONLY		SCALE 1:1	DESIGN UNITS METRIC	THIRD ANGLE PROJECTION
	10 UNDER	±0.2	DRAWN BY M. NABEI	DATE '07/10/30	TITLE COMPACT ROBOT CONN. POWER CRIMP PIN -LEAD FREE-		
	10 OVER 30 UNDER	±0.25	CHECKED BY M. ISOGAYA	DATE '07/10/30	MOLEX INCORPORATED		
	30 OVER	±0.3	APPROVED BY N. UKITA	DATE '07/10/30	MATERIAL NO. SEE TABLE	DOCUMENT NO. SD-56193-003	SHEET NO. 1 OF 1
	ANGULAR ±3 °	THIS DRAWING CONTAINS INFORMATION THAT IS PROPRIETARY TO MOLEX INCORPORATED AND SHOULD NOT BE USED WITHOUT WRITTEN PERMISSION					
	DRAFT WHERE APPLICABLE MUST REMAIN WITHIN DIMENSIONS						